





71 Beard Crescent

New Mills, High Peak

Council Tax band: B

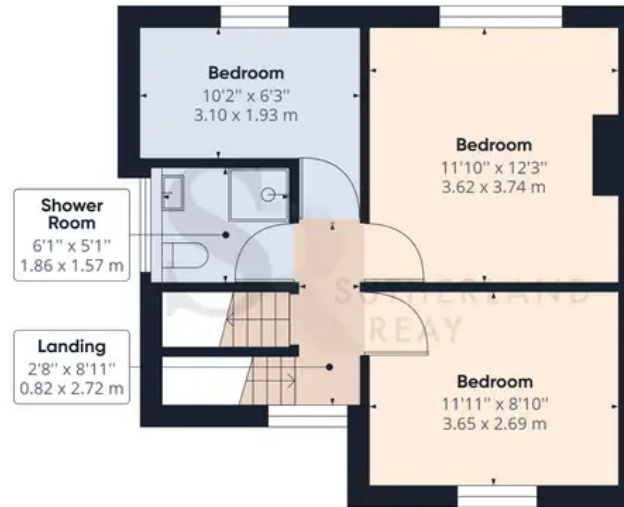
Tenure: Freehold

- Freehold
- South Facing Rear Garden
- Three Bedroom Semi Detached House
- Set Over Three Floors
- Well Presented Throughout
- Contemporary Kitchen
- Living Room With Multi-Fuel Stove Open To Dining Area
- Modern Shower Room
- Spacious Loft Room
- EPC Rating TBC





Floor 0



Floor 1



Floor 2

Approximate total area⁽¹⁾

1016.43 ft²
94.43 m²

Reduced headroom

37.59 ft²
3.49 m²

(1) Excluding balconies and terraces

 Reduced headroom
(below 1.5m/4.92ft)

While every attempt has been made to ensure accuracy, all measurements are approximate, not to scale. This floor plan is for illustrative purposes only.

AWARD WINNING ESTATE
& LETTING AGENTS

SCAN THE QR CODE
FOR MORE DETAILS
OR BOOK A VIEWING

