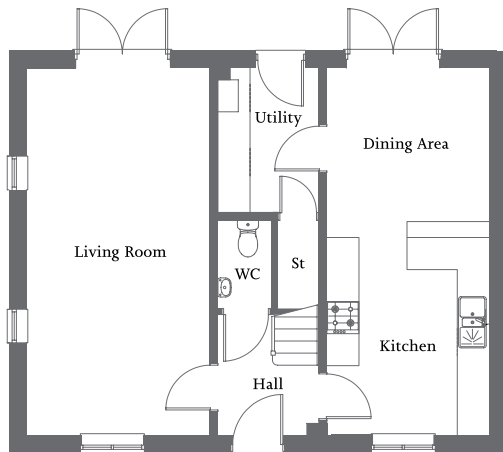


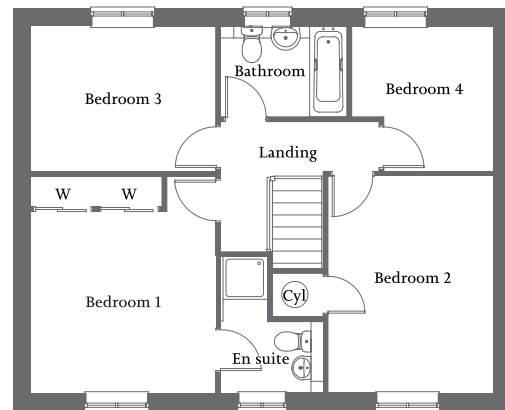


| Triple aspect living room with French Doors to rear | Kitchen/dining area with French Doors | Utility |
| En suite and fitted wardrobe to bedroom 1 | Three further bedrooms and family bathroom | Single garage and parking spaces |



Ground Floor

Living Room	6.87m x 3.45m	22'5" x 11'3"
Kitchen/Dining Area	6.87m x 3.05m	22'5" x 10'0"
Utility	2.70m x 1.89m	8'9" x 6'2"



First Floor

Bedroom 1	4.07m x 3.47m	13'4" x 11'4"
En suite (incl. shower recess)	2.55m x 1.90m	6'3" x 4'4"
Bedroom 2	4.06m x 3.09m	13'3" x 10'1"
Bedroom 3	3.47m x 2.72m	11'4" x 8'9"
Bedroom 4 (incl. door recess)	2.71m x 2.65m	8'9" x 8'7"
Bathroom	2.37m x 1.70m	7'8" x 5'6"