



## WELL PRESENTED FOUR BEDROOM, TWO RECEPTION FAMILY HOME

---

Whitfield Way, Mill End, Rickmansworth, Hertfordshire, WD3 8QT

**ROBSONS**

## WELL PRESENTED FOUR BEDROOM, TWO RECEPTION FAMILY HOME

Whitfield Way, Mill End, Rickmansworth,  
Hertfordshire, WD3 8QT

**RECEPTION ROOM • DINING ROOM •  
KITCHEN • WORKSHOP • GUEST CLOAKROOM/  
UTILITY ROOM • FOUR BEDROOMS • FAMILY  
BATHROOM • GOOD SIZED DRIVEWAY • REAR  
GARDEN**

### Description

This four bedroom family home provides flexible living accommodation set over two floors.

There is a good sized hallway leading to the reception room, which has a feature fireplace. There is dining room leading to the kitchen, which is fitted with ample wall and base units and an integrated electric oven and hob, together with a door to the garden.

The ground floor is completed by as guest cloakroom/utility, a workshop and a store.





To the first floor are four good sized bedrooms and the family bathroom.

The property has a block paved driveway to the front, providing off street parking for two vehicles. The rear garden has a generously sized decked patio leading to the area of lawn with a central path and mature planting.

### Location

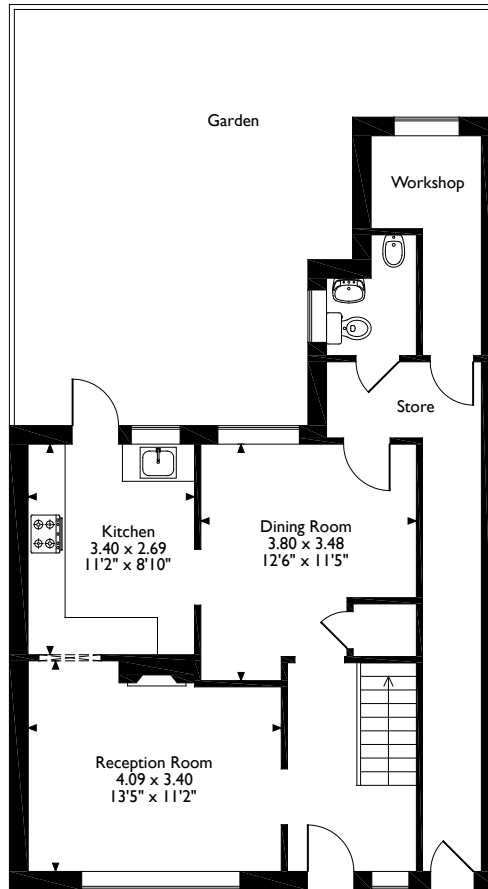
Rickmansworth town centre has a wide range of boutique shops, coffee houses, restaurants and major supermarkets. The Metropolitan and Chiltern line train services connect you to London Baker Street, Marylebone Station and beyond. The M25 motorway is available at both junction 17 and 18, connecting you to the national motorway network. Major London airports are also within reach. The area is well served for good quality private and state schools for all ages. Chorleywood and Rickmansworth offer everything for the sporting individual from rugby, cricket, football, tennis, horse riding and golf. Rickmansworth Aquadrome is an ideal setting for walks, sailing, fishing and water skiing.

### Additional Information

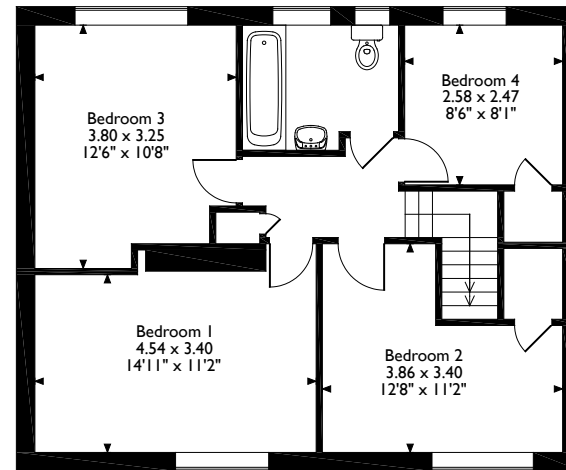
Tenure: Freehold  
Local Authority: Three Rivers District Council  
Council Tax: Band D  
Energy Efficiency Rating: Band D



Whitfield Way Mill End, Rickmansworth, Hertfordshire  
Approximate Gross Internal Area  
116 Sq M/1252 Sq Ft



**Ground Floor**



**First Floor**

Please note that the location of doors, windows and other items are approximate and this floorplan is to be used for illustrative purposes only. Unauthorized reproduction is prohibited.



130 High Street, Rickmansworth, Hertfordshire, WD3 1AB  
Tel: 01923 777762 Email: rickmansworth@robsonswb.com

[www.robsonswb.com](http://www.robsonswb.com)

www.  
the  
londonoffice.co.uk  
40 ST JAMES'S PLACE SW1