

THE  
AXIUM  
EXPERIENCE THE HEART OF THE CITY

# EXPERIENCE THE HEART OF THE CITY

WELCOME TO BIRMINGHAM	4
THE AXIUM	5
THE AXIUM OVERVIEW	6 & 7
LIFESTYLE & OVERVIEW	8 & 9
KITCHEN SPECIFICATIONS	10
LIVING ROOM SPECIFICATIONS	11
BATHROOM SPECIFICATIONS	12
BEDROOM SPECIFICATIONS	13
EXPLORE BIRMINGHAM	14 & 15
CITY OF BUSINESS	16
CITY OF EDUCATION	17
ARTS & SPORTS	18 & 19
CITY OF SHOPPING	20
CITY OF RESTAURANTS	21
SITE PLAN	22
TOP CAPITAL GROUP & COURT COLLABORATION	23
LETTINGS AGENT	24 & 25
FLOOR PLANS	26 - 54



# WELCOME TO BIRMINGHAM

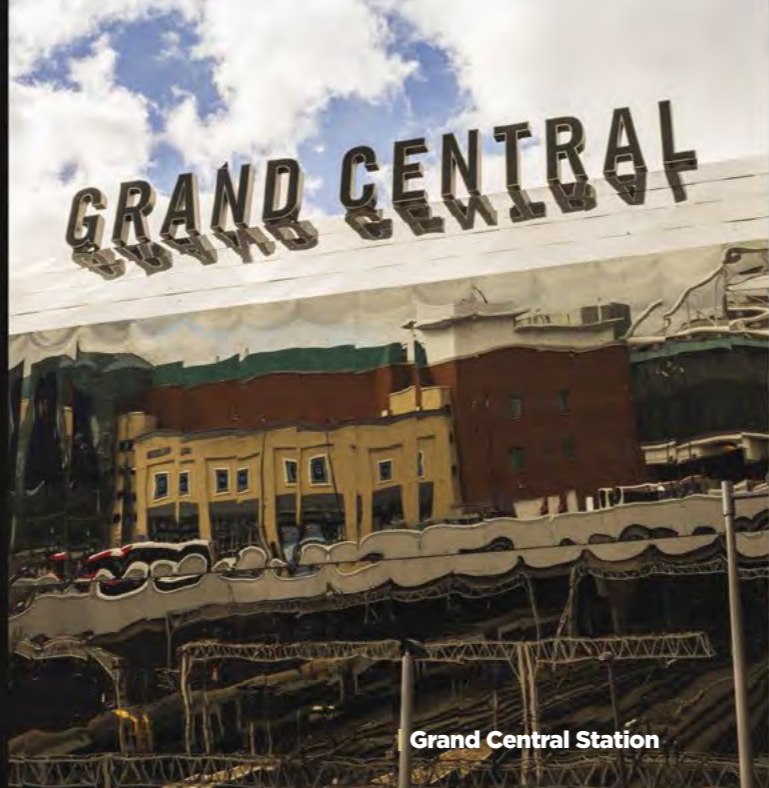
**YOU COULDN'T BE ANY MORE CENTRAL BIRMINGHAM THAN RIGHT HERE.**

The Axium is situated in a fantastic location in the centre of the UK's dynamic second city.

Birmingham is an economic powerhouse that is poised for even bigger growth. The city is also bustling and vibrant allowing a perfect work life balance.

**HS2 HIGH SPEED RAILWAY WILL REDUCE TRAVEL TIME TO LONDON TO ONLY 49 MINUTES**

EXPERIENCE THE HEART OF THE CITY



Grand Central Station



## THE AXIUM

**A MAGNIFICENT DEVELOPMENT COMPRISING**

**304 LUXURIOUS APARTMENTS**

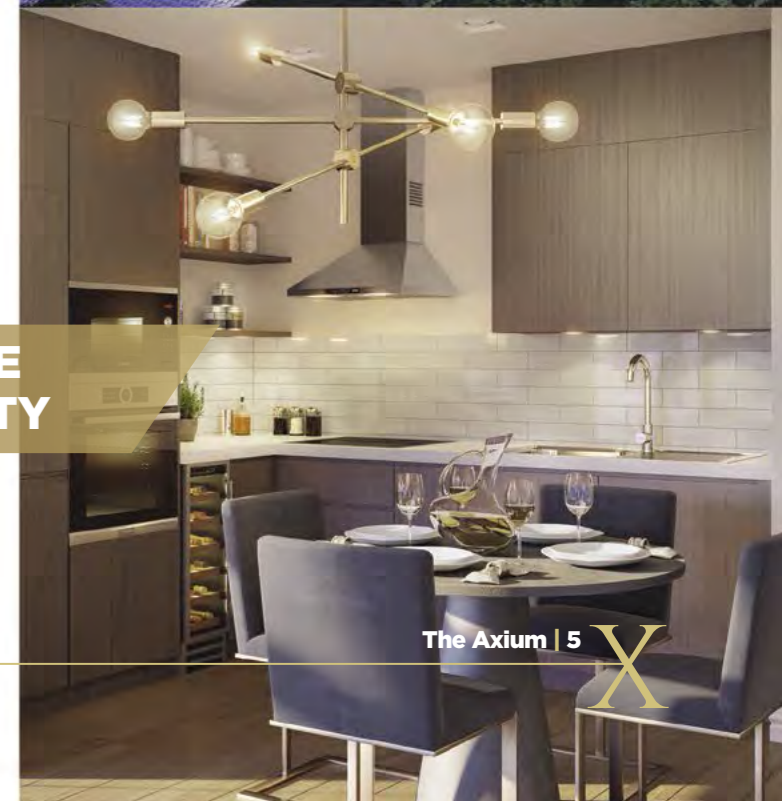
situated within the sought-after location of Windmill Street, Central Birmingham, B1 1NS

**CONTEMPORARY LIVING IN THE HEART OF THE UK'S SECOND CITY**

EXPERIENCE THE HEART OF THE CITY



The Axium at night



# THE AXIUM OVERVIEW

**EXPERIENCE THE DELIGHTS OF CITY CENTRE LIVING.**  
304 spacious one- and two-bedroom high-end apartments designed with comfort and style in mind. From airy open plan living to luxury specifications, the Axium has been designed with all the functionality and high standards expected from city centre living.

## KITCHEN



### INDULGE AND DINE IN STYLE.

As the heart of any home, the kitchens have been designed with indulgence in mind. From high quality appliances to modern and contemporary layouts, the kitchens are sure to bring out the inner chef in you.

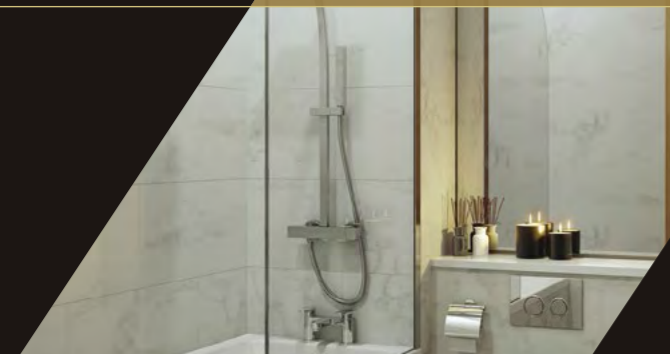
## LIVING ROOM



### DESIGNED TO COMPLIMENT YOUR LIFESTYLE.

With an abundance of natural light, the spacious open plan living rooms have been designed to be the perfect space to relax at the end of the day or enjoy an evening with friends and family.

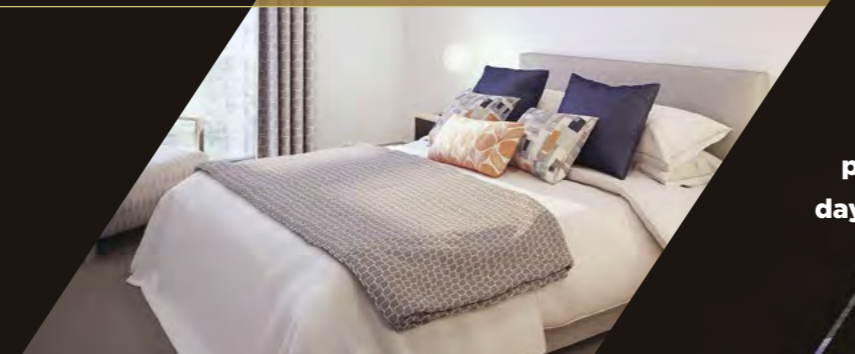
## BATHROOM



### REFRESH AND RELAX.

Your bathroom will be the perfect place to prepare you for a busy day and to welcome you at the end too. Everything on hand and finished to a beautiful, high quality standard.

## BEDROOM



### UNWIND IN PEACEFUL TRANQUILITY.

The light and airy bedrooms have been designed for comfort and calm. Wake up energised and invigorated after the perfect nights sleep, ready for whatever your day brings .

**BEAUTIFULLY  
DESIGNED  
TO FIT ANY  
LIFESTYLE**

# APARTMENT SPECIFICATIONS OVERVIEW

EVERY DETAIL CONSIDERED.  
EVERY OPPORTUNITY TAKEN.

## KITCHEN

- Porcelanosa custom designed soft closing door and drawer units with matt white or wood grain base unit door fronts, wall unit door fronts and high quality worktops
- High quality appliances by BOSCH or similar, including stainless steel electric oven, built-in microwave, ceramic hob, fridge, freezer, dishwasher, washer/dryer, chimney hood pyramid and wine cooler
- Stainless steel sink with single lever mixer tap

## BATHROOM AND ENSUITE

- White bathroom suites comprising of Porcelanosa suite plus bath with mixer tap or low profile shower tray with thermostatic shower and glass/chrome shower door
- Concealed cistern dual flush Porcelanosa, WC
- Porcelanosa NK Urban 50cm basin with single lever basin mixer with pop up waste
- Porcelanosa Carrera Blanco Brillo / Marmol Gris (en-suite) floor tiles
- Porcelanosa Marmol Carrera / Marmol Gris (en-suite) wall tiles
- Chrome heated towel rail
- Extractor fan

## BEDROOM

- Fitted wardrobes in master bedroom
- Ensuites to all master bedrooms with tiled wall finish

## FLOOR FINISHES

- Certified Engineered Oak Flooring by Havwoods throughout
- Desso Asteranne Carpet in all bedrooms

## HEATING

- Thermostatically controlled electric heating
- Electrically heated hot water

## LIGHTING

- Energy Efficient downlights to living area, kitchen, bedrooms and bathrooms

## WALL AND CEILING FINISHES

- Matt emulsion paint finish throughout

## JOINERY

- European Oak veneer entrance door and internal doors
- Skirting and architraves in Satin finish

## WINDOWS

- Velfac 200 fixed or openable aluminium framed double glazed units with integrated louvre above window

## ELECTRICAL

- Sky/Sky Q TV sockets in living room and link through to bedroom 1
- Audio visual entry-phone system in each apartment linked to secure communal entrances
- Hard wired fire detectors
- BT Points in each apartment

## COMMUNAL ENTRANCES

- Stainless steel passenger lift in each block
- Concierge desk
- Communal terrace space

## APARTMENT SPECIFIC

- Exclusive private terraces available on selected units

## PARKING

- Private covered car park (Subject to availability and additional cost)
- External CCTV

# KITCHEN SPECIFICATIONS

- Porcelanosa custom designed soft closing door and drawer units with matt white or wood grain base unit door fronts, wall unit door fronts and high quality worktops
- High quality appliances by BOSCH or similar, including stainless steel electric oven, built-in microwave, ceramic hob, fridge, freezer, dishwasher, washer/dryer, chimney hood pyramid and wine cooler
- Stainless steel sink with single lever mixer tap

# LIVING ROOM SPECIFICATIONS

- FLOORING**
  - Certified Engineered Oak Flooring by Havwoods throughout
- WINDOWS**
  - Velfac 200 fixed or openable aluminium framed double glazed units with integrated louvre above window
- DOORS**
  - DEUREN European Oak Veneer doors with chrome polished Eisenware ironmongery

# BATHROOM SPECIFICATIONS

- Porcelanosa suite plus bath with mixer tap or low profile shower tray with thermostatic shower and glass/chrome shower door
- Concealed cistern dual flush Porcelanosa, WC
- Porcelanosa NK Urban 50cm basin with single lever basin mixer with pop up waste
- Porcelanosa Carrera Blanco Brillo / Marmol Gris (en-suite) floor tiles
- Porcelanosa Marmol Carrera / Marmol Gris (en-suite) wall tiles
- Chrome heated towel rail
- Extractor fan

# BEDROOM SPECIFICATIONS

- Desso Asteranne Carpet
- High quality built-in wardrobes in master bedrooms
- Master bedrooms with en-suite bathrooms
- Sky/Sky Q+ TV sockets in the living room linked to the bedroom
- Energy Efficient downlighting

# EXPLORE BIRMINGHAM

DISCOVER THE WONDERS OF THIS BUSTLING METROPOLIS.

YOUR OPPORTUNITY TO EXPLORE A VIBRANT CITY WHERE AMENITIES ARE JUST A HEARTBEAT AWAY.

Birmingham is one of the youngest cities in Europe with under 25's accounting for nearly **40% OF ITS POPULATION** which should help fuel further rental increases in city centre residential demand.

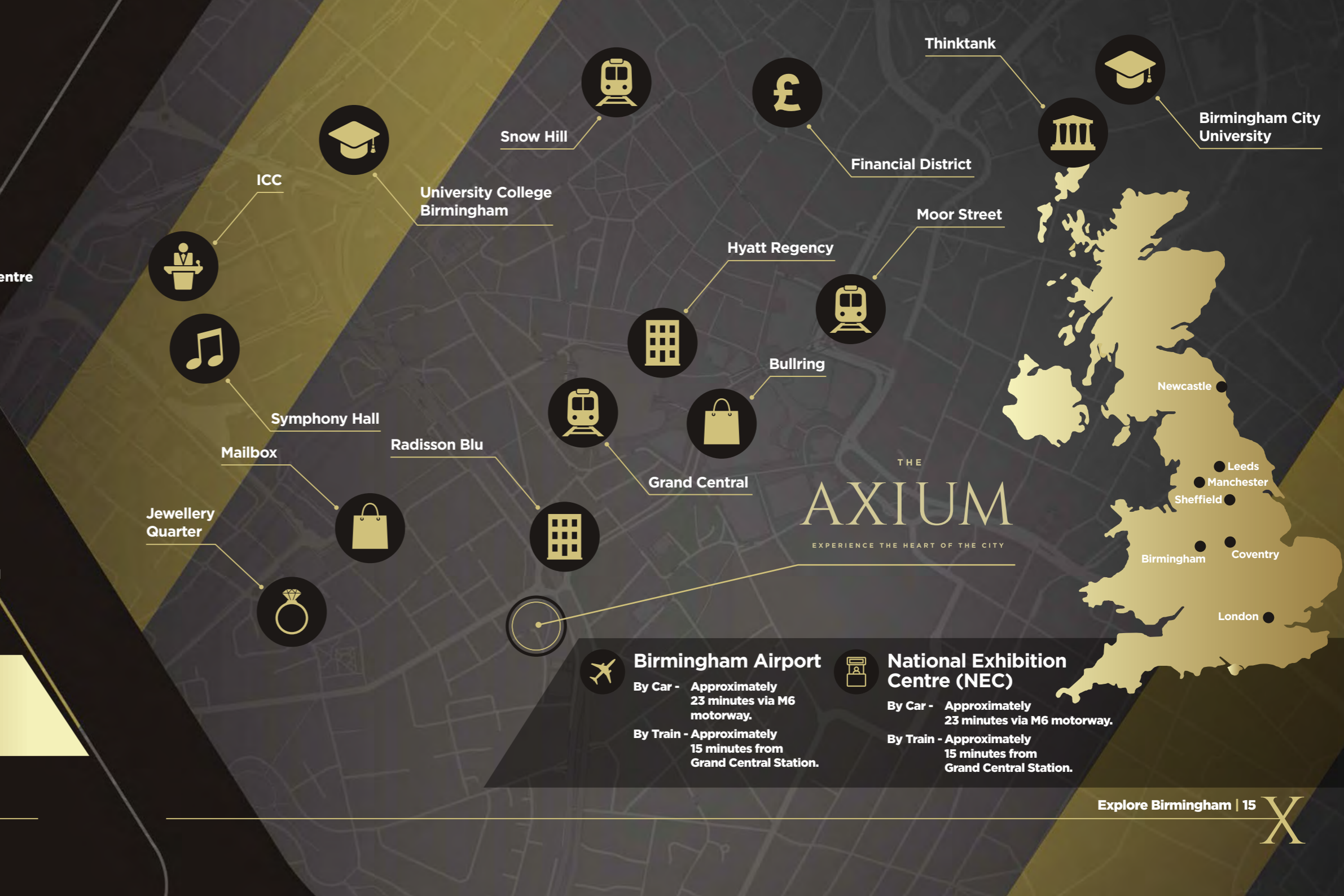


**£550m RENOVATION**  
OF BIRMINGHAM NEW STREET STATION  
which now serves 140,000 passengers per day

**'BIRMINGHAM IS IN THE THROES OF A DRAMATIC CHANGE WITH THE PROSPECTS BRIGHT AND EXCITING'** NEIL CHEGWIDDEN - JLL RESIDENTIAL RESEARCH

## KEY TRAVEL TIMES FROM THE AXIUM

- 8 mins to the Bull Ring Shopping Centre  
9 mins to Grand Central Station  
12 mins to the Financial District
- 49 mins to London via HS2  
10 mins to Birmingham Airport
- 10 mins to the future HS2 station at Curzon Street
- 55 mins to Dublin  
1hr 15 mins to Paris  
12 hours 10 mins to China
- 1 hr 25 mins to Manchester via M6  
2hrs to Leeds via M1  
2 hr 30 mins to London via M6 & M1



**Birmingham Airport**  
By Car - Approximately 23 minutes via M6 motorway.  
By Train - Approximately 15 minutes from Grand Central Station.

**National Exhibition Centre (NEC)**  
By Car - Approximately 23 minutes via M6 motorway.  
By Train - Approximately 15 minutes from Grand Central Station.





## A CITY OF BUSINESS

**THE AXIUM LIES WITHIN CLOSE PROXIMITY TO THE COMMERCIAL HEART OF THE CITY.**

As the largest regional financial and professional services hub in the UK, Birmingham is home to an abundance of high profile businesses, making it the perfect place to call home.

**AT THE CRUX OF BUSINESS**

EXPERIENCE THE HEART OF THE CITY



Joseph Chamberlain Memorial Clock Tower (informally known as the Old Joe)



## A CITY OF EDUCATION

Birmingham offers a number of excellent educational facilities including a number of outstanding schools together with 5 prestigious universities and 75,000 students.

- University of Birmingham
- Aston University
- Birmingham City University
- University College Birmingham
- Newman University

**THE HEART OF LEARNING**

EXPERIENCE THE HEART OF THE CITY

Birmingham City University, Margaret Street Campus



**Apartments with layout and style designed to suit every lifestyle combining the dynamics of city life with the convenience of practical living.**

**Birmingham hosts 34 million visitors a year.**

# ARTS & SPORTS

## ARTS & CULTURE

Take in the city's artistic and creative atmosphere by experiencing Birmingham's impressive galleries, museums, theatres, festivals and live music venues. There is something for everybody with a fantastic mixture of entertainment, social and cultural activities on offer.

## SPORTS & ENTERTAINMENT

Renowned across the world as a location for competitive sport, the city has some of the most exciting venues for watching or participating in sport in the UK. With the Barclaycard Arena, Alexander Stadium, Genting Arena, Edgbaston Cricket Ground and football teams including Aston Villa, Birmingham City and West Bromwich Albion to name a few.

**PLENTY TO DO.  
SPOILT FOR CHOICE.**



# A CITY OF SHOPPING

**CHOOSE FROM AN OUTSTANDING RANGE OF NEARBY SHOPPING CENTRES, INDEPENDENT RETAILERS AND HISTORIC MARKETS.**

Home to The Bullring, The Mailbox, Grand Central and the famous Jewellery Quarter, Birmingham is sure to satisfy every retail desire all within walking distance from The Axium.

**A PLACE FOR EVERY RETAIL DESIRE**

EXPERIENCE THE HEART OF THE CITY



# A CITY OF RESTAURANTS

**THERE ARE THOUSANDS OF TASTES TO BE EXPLORED FROM EVERY CORNER OF THE WORLD IN BIRMINGHAM'S EATERIES AND RESTAURANTS.**

Something for all tastes; from Michelin star fine dining to a casual bite to eat. Experience the flavours of the city's not to be missed food markets, festivals and events.

**BIRMINGHAM HAS MORE 3-STAR MICHELIN RESTAURANTS THAN ANY OTHER UK CITY OUTSIDE OF LONDON**

EXPERIENCE THE HEART OF THE CITY

# SITE LOCATION



- 5-min. walk from the beautiful historical Birmingham canals
- 6-min. walk from The Mailbox shopping area, restaurants and bars
- 7-min. walk from the Birmingham Hippodrome, one of the largest theatres in the UK
- 9-min. walk from HSBC's new UK headquarters at Arena Central
- 9-min. walk to New Street Station & Grand Central Station
- 12-min. walk from Brindleyplace where Deutsche Bank is located



# TOP CAPITAL GROUP & COURT COLLABORATION

## TOP CAPITAL GROUP IS AN INTERNATIONAL PROPERTY DEVELOPER AND REAL ESTATE INVESTMENT COMPANY.

Based in Hong Kong, Top Capital Group has a long track record building high quality residential, commercial and mixed-use projects in Asia and is now committed to several key overseas markets where it has identified the best potential to leverage on its experience and deliver the highest possible value to investors and the local communities.

Top Capital Group has a presence in Australia and the United Kingdom where it sources, finances and develops residential, commercial and mixed-use projects.



[topcapgroup.com](http://topcapgroup.com)

## COURT COLLABORATES TO MAKE PROPERTY PROJECTS HAPPEN.

As a dynamic and experienced team with a network of trusted collaborators and investors, Court has a proven portfolio of successful developments across Greater Birmingham.

Delivering high quality projects, Court works closely with international investors, land owners, tenants, stakeholders, investors and local communities, delivering the best possible solutions for each and every project, always.



[courtcollaboration.com](http://courtcollaboration.com)

# LETTINGS & MANAGEMENT AGENT

Established in 2001, Complete RPI provides a totally unique asset managed and commercial approach to the letting and management of investment property UK nationwide.

With a bespoke online platform our clients have access to all aspects of their property portfolio 24/7. With a 98% occupancy rate and proven track record to maximise clients rental returns we are leaders in the UK market.

With national UK coverage our consolidated approach offers a single point of contact and unrivalled letting exposure. We are delighted to share our extensive experience in servicing investors in the UK and overseas with future owners of The Axium.

Our bespoke services include:

- **Rent Guarantee**
- **100% of Market Rent**
- **Minimum annual RPI increase in rent**
- **98.3% Occupancy 3 year rolling average**
- **Single Point of Contact**
- **Search and Acquisition**
- **Sales Management Maximising Value**
- **Landlord Online Tracking Tools 24/7/365**
- **Wealth and Asset Portfolio Management**
- **National Letting Management Under One Roof**
- **Competitive Fee and Instant Return on Investment**



Office:

**Tel:** 08432 161397

**Web:** [www.completerpi.com](http://www.completerpi.com)

**Email:** [investment@completerpi.com](mailto:investment@completerpi.com)

**304 STUNNING AND CONTEMPORARY APARTMENTS  
LOCATED ON WINDMILL STREET, B1 1NS**

# INTRODUCING AN OUTSTANDING COLLECTION OF 304 LUXURIOUS APARTMENTS

**POSITIONED IN THE VIBRANT LOCATION OF  
BIRMINGHAM CITY CENTRE.**

Experience the very best of urban living in a city rich in amenities and activities in a development that offers an exceptional lifestyle opportunity with corporate, shopping, dining and cultural hotspots just a heartbeat away.

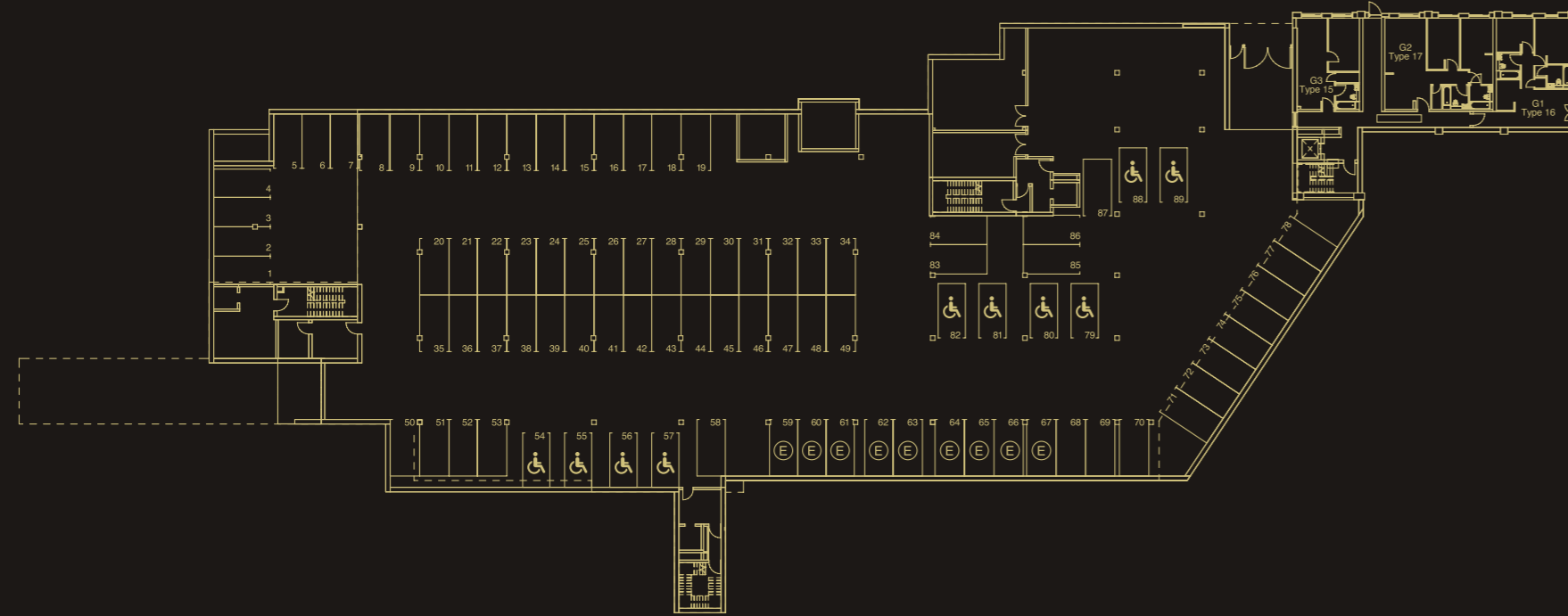
The Axium development comprises a blend of 304 spacious one- and two-bedroom high-end apartments arranged across 10 floors, with each apartment enjoying the finest designs and highest specification interiors.

**BEAUTIFULLY  
DESIGNED  
TO FIT ANY  
LIFESTYLE**

# GROUND FLOOR

## APARTMENTS AVAILABLE ON THIS FLOOR

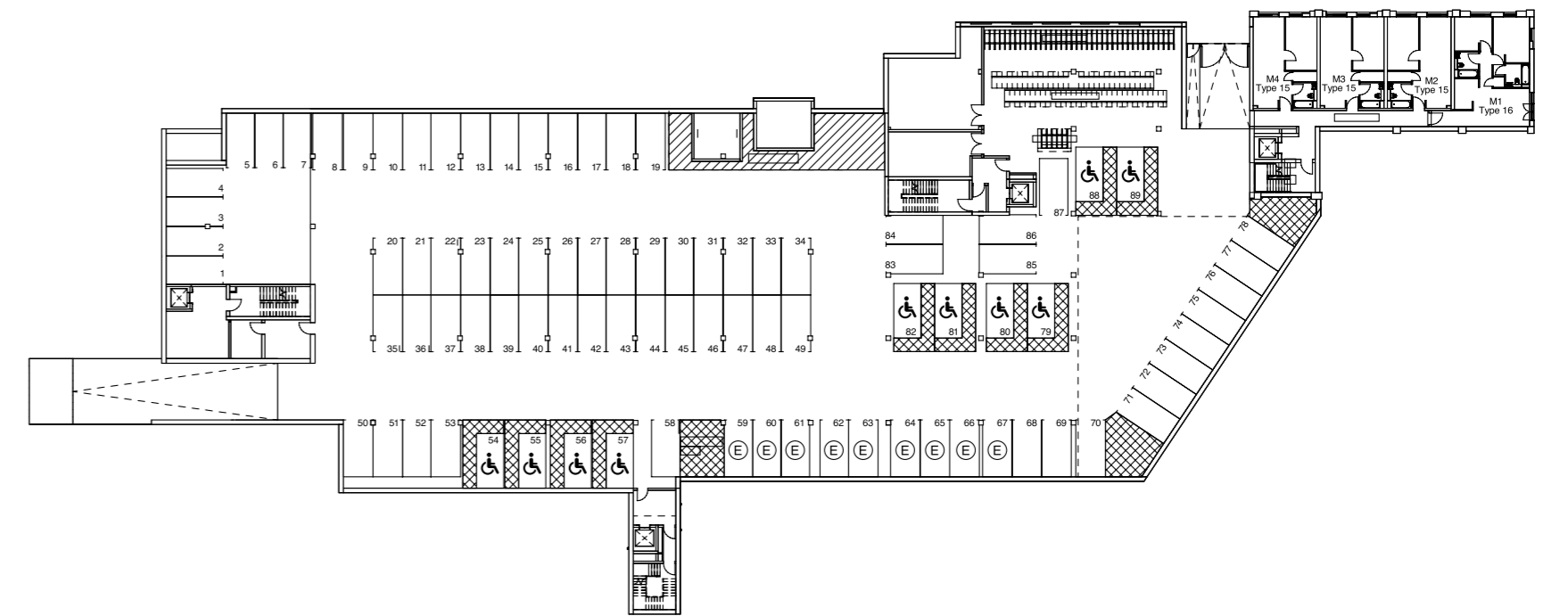
- 1 one bedroom apartments
- 2 two bedroom apartments



# MEZZANINE LEVEL

## APARTMENTS AVAILABLE ON THIS FLOOR

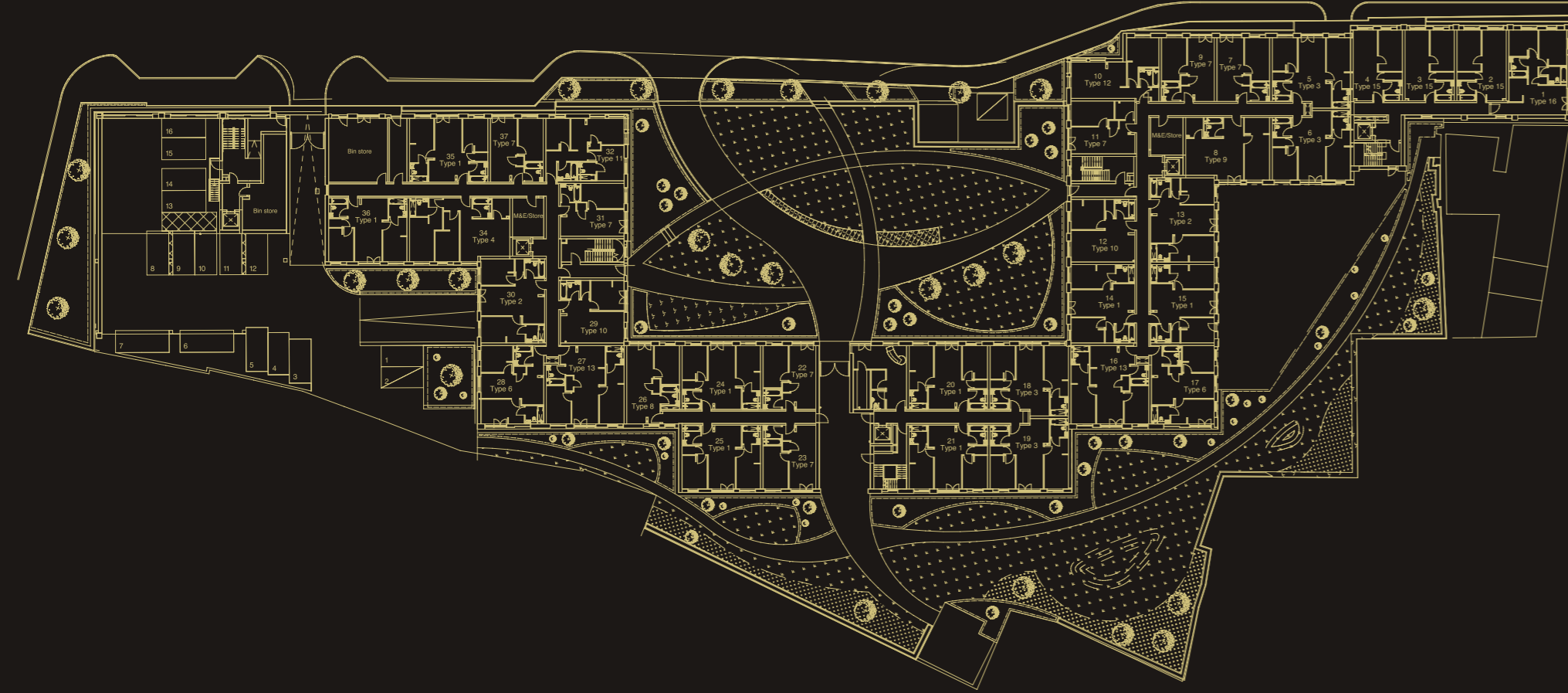
- 3 one bedroom apartments
- 1 two bedroom apartments



# GARDEN

## APARTMENTS AVAILABLE ON THIS FLOOR

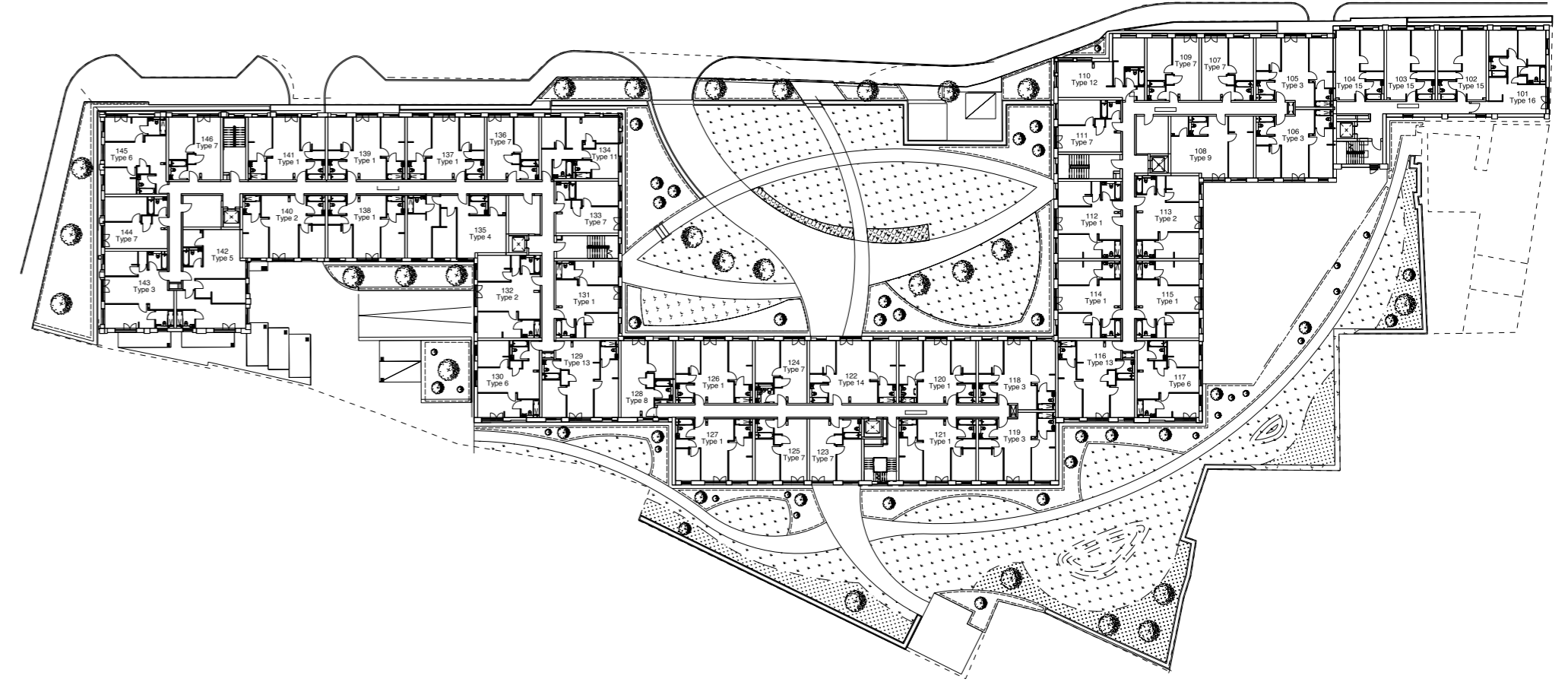
- 23 one bedroom apartments
- 13 two bedroom apartments



# FIRST FLOOR

## APARTMENTS AVAILABLE ON THIS FLOOR

- 28 one bedroom apartments
- 18 two bedroom apartments

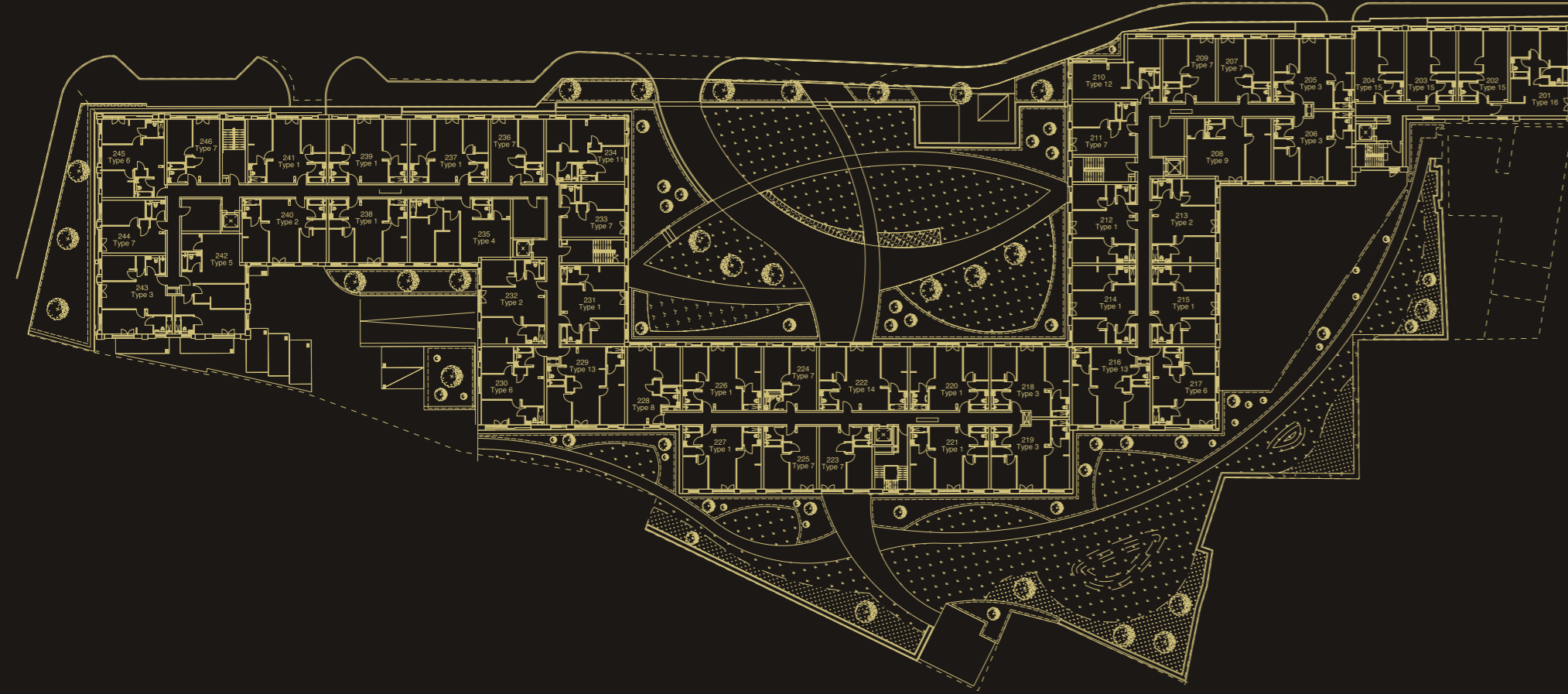




# SECOND FLOOR

## APARTMENTS AVAILABLE ON THIS FLOOR

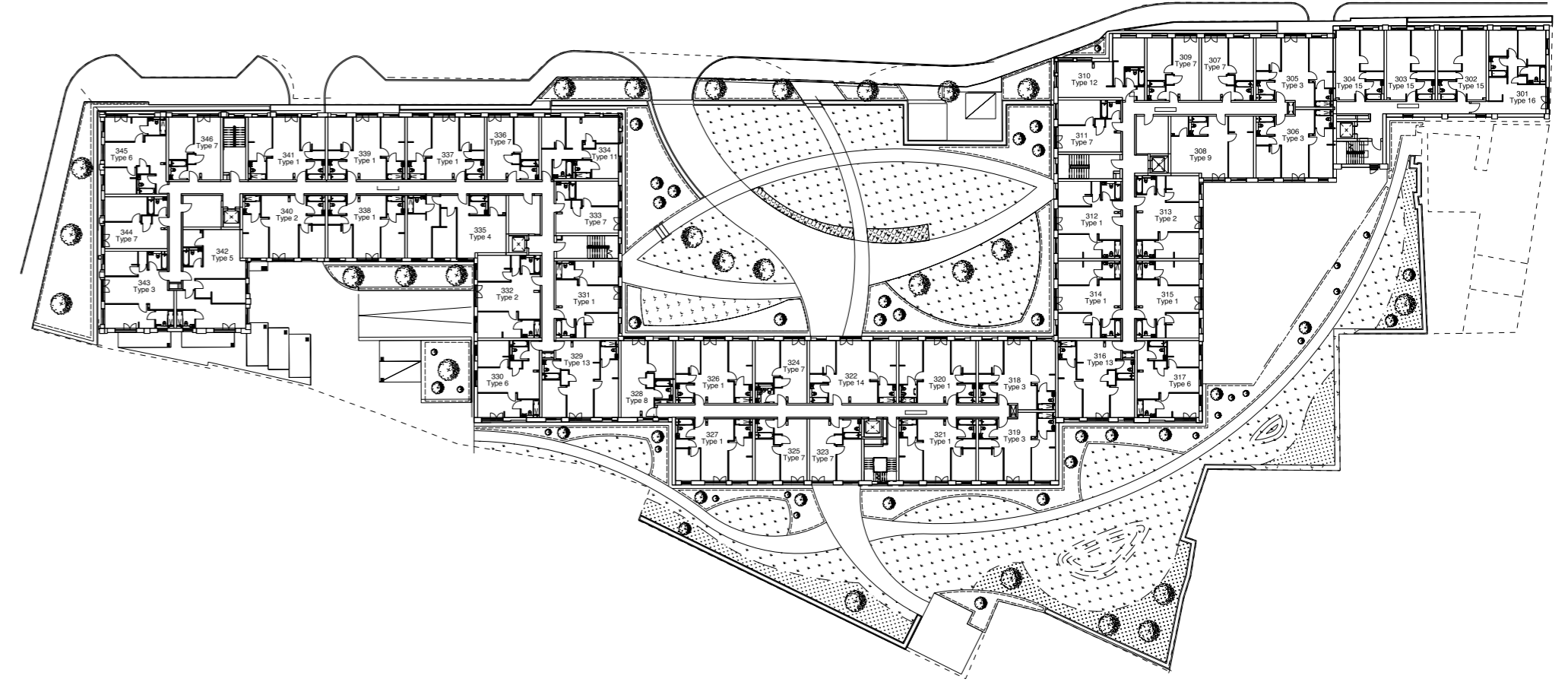
- 28 one bedroom apartments
- 18 two bedroom apartments



# THIRD FLOOR

## APARTMENTS AVAILABLE ON THIS FLOOR

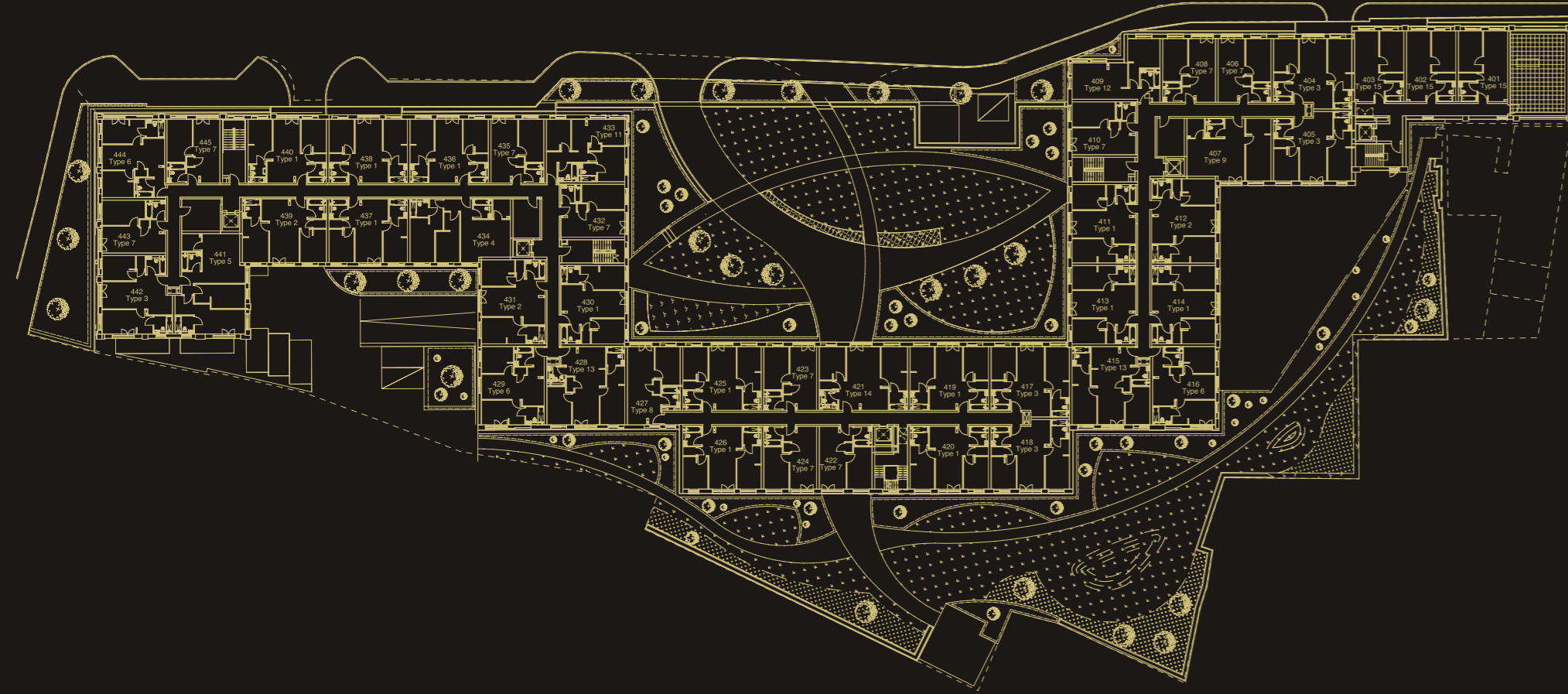
- 28 one bedroom apartments
- 18 two bedroom apartments



# FOURTH FLOOR

## APARTMENTS AVAILABLE ON THIS FLOOR

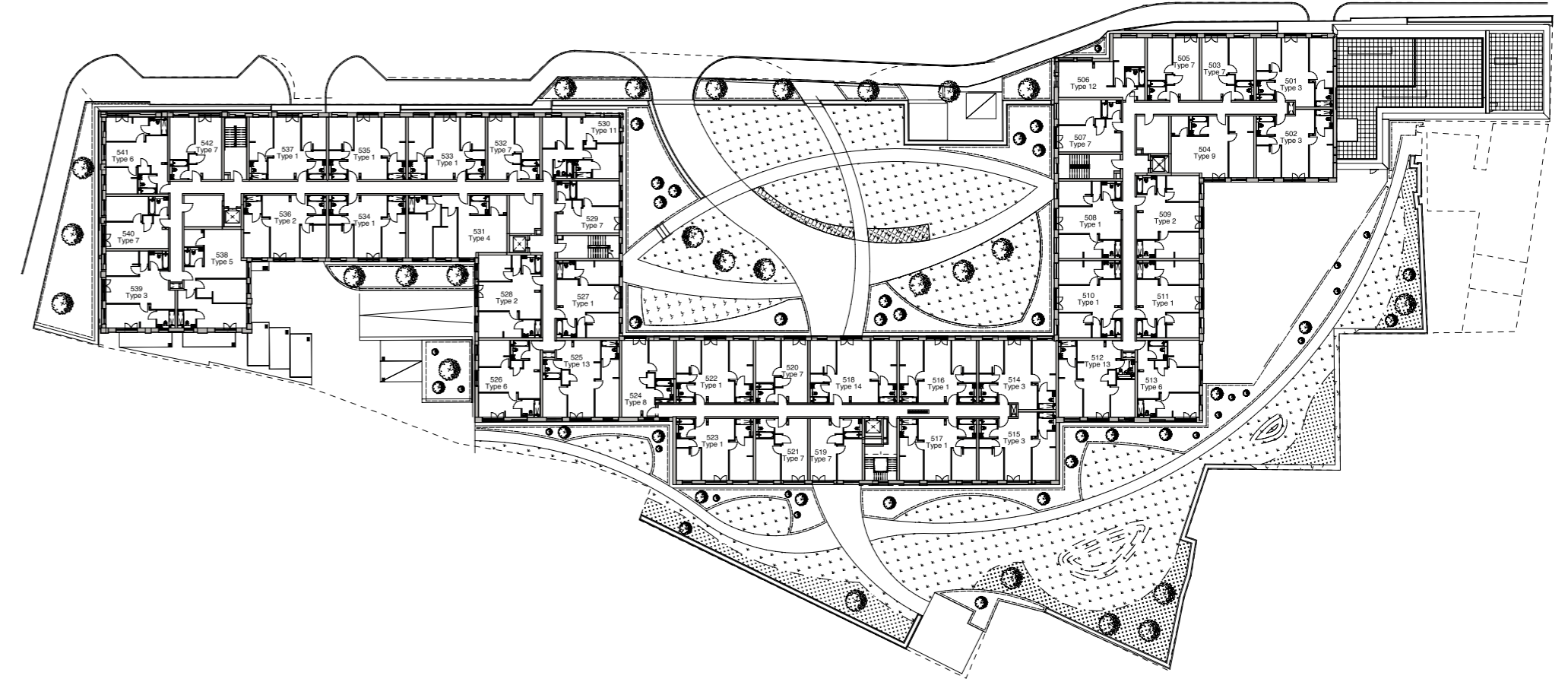
- 28 one bedroom apartments
- 17 two bedroom apartments



# FIFTH FLOOR

## APARTMENTS AVAILABLE ON THIS FLOOR

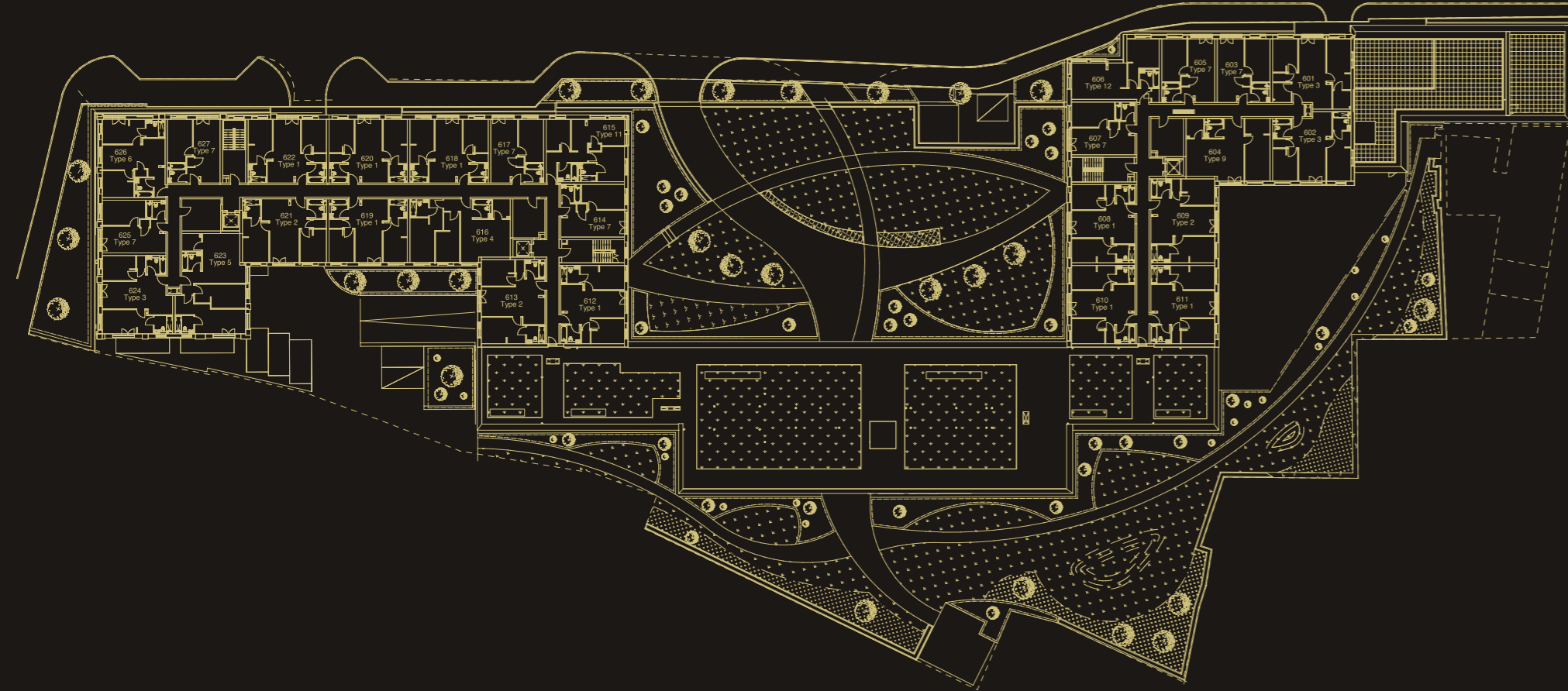
- 25 one bedroom apartments
- 17 two bedroom apartments



# SIXTH FLOOR

## APARTMENTS AVAILABLE ON THIS FLOOR

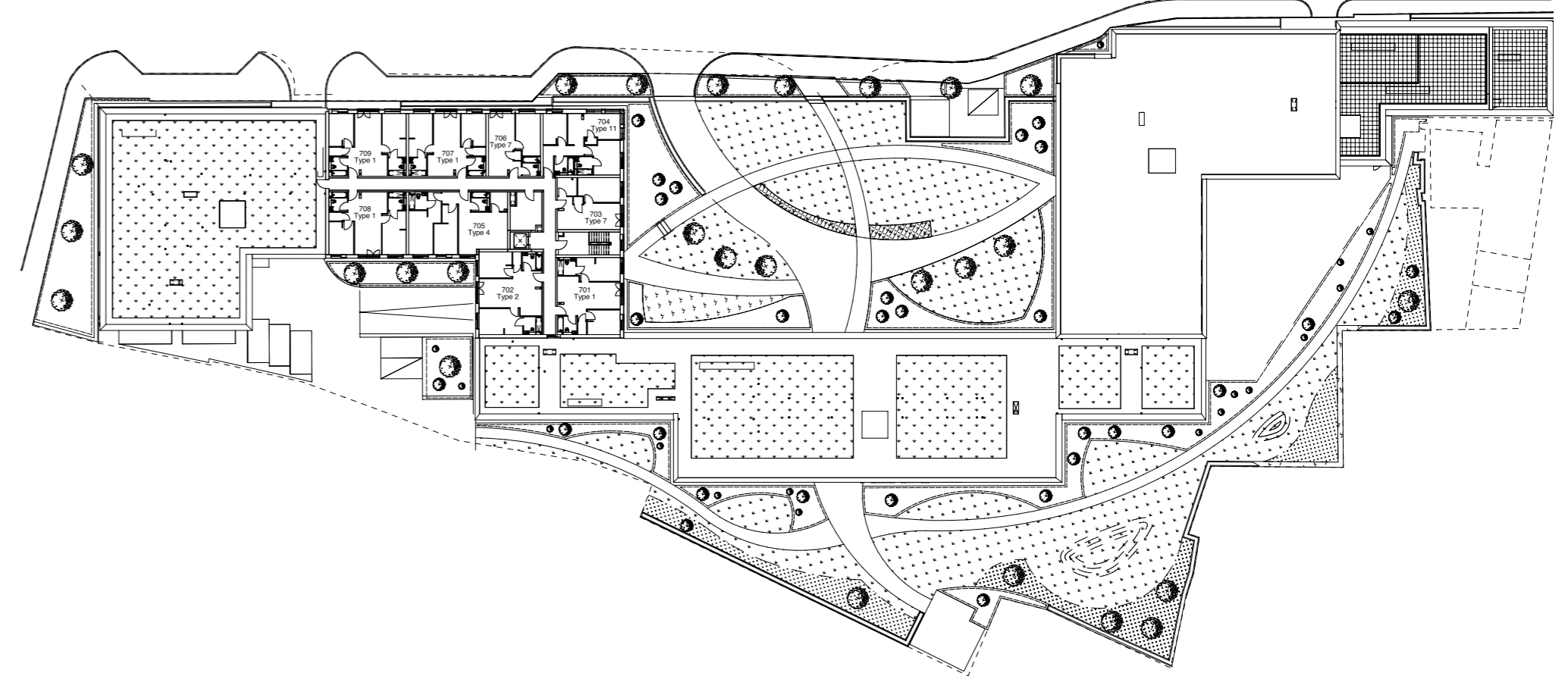
- 17 one bedroom apartments
- 10 two bedroom apartments



# SEVENTH FLOOR

## APARTMENTS AVAILABLE ON THIS FLOOR

- 6 one bedroom apartments
- 3 two bedroom apartments



# APARTMENT STYLE 1

## SPECIFICATION

- 2 bedroom - 2 bathroom
- Apartment size 688.9 sq ft

## ROOM DIMENSIONS

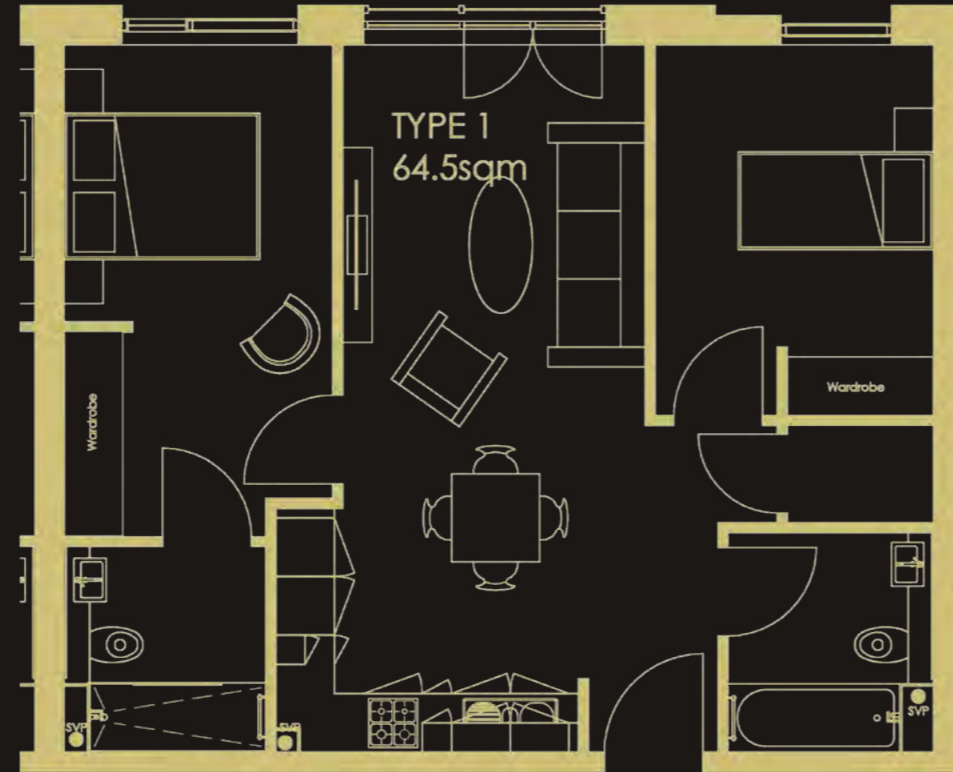
- Living/kitchen/dining room 290.6 sq ft
- Bedroom 1 16.4 x 9 ft
- Ensuite 6.9 x 6.8 ft
- Bedroom 2 12.5 x 9.4 ft
- Bathroom 7.4 x 6.9 ft

## APARTMENT AVAILABLE ON

Garden | First | Second | Third | Fourth | Fifth | Sixth | Seventh floors

## TYPE 1 APARTMENT NUMBERS:

14, 15, 20, 21, 24, 25, 35, 36, 112, 114, 115, 120, 121, 126, 127, 131, 137, 138, 139, 141, 212, 214, 215, 220, 221, 226, 227, 231, 237, 238, 239, 241, 312, 314, 315, 320, 321, 326, 327, 331, 337, 338, 339, 341, 411, 413, 414, 419, 420, 425, 426, 430, 436, 437, 438, 440, 508, 510, 511, 516, 517, 522, 523, 527, 533, 534, 535, 537, 608, 610, 611, 612, 618, 619, 620, 622, 701, 707, 708, 709.



# APARTMENT STYLE 2

## SPECIFICATION

- 2 bedroom - 2 bathroom
- Apartment size 742.7 sq ft

## ROOM DIMENSIONS

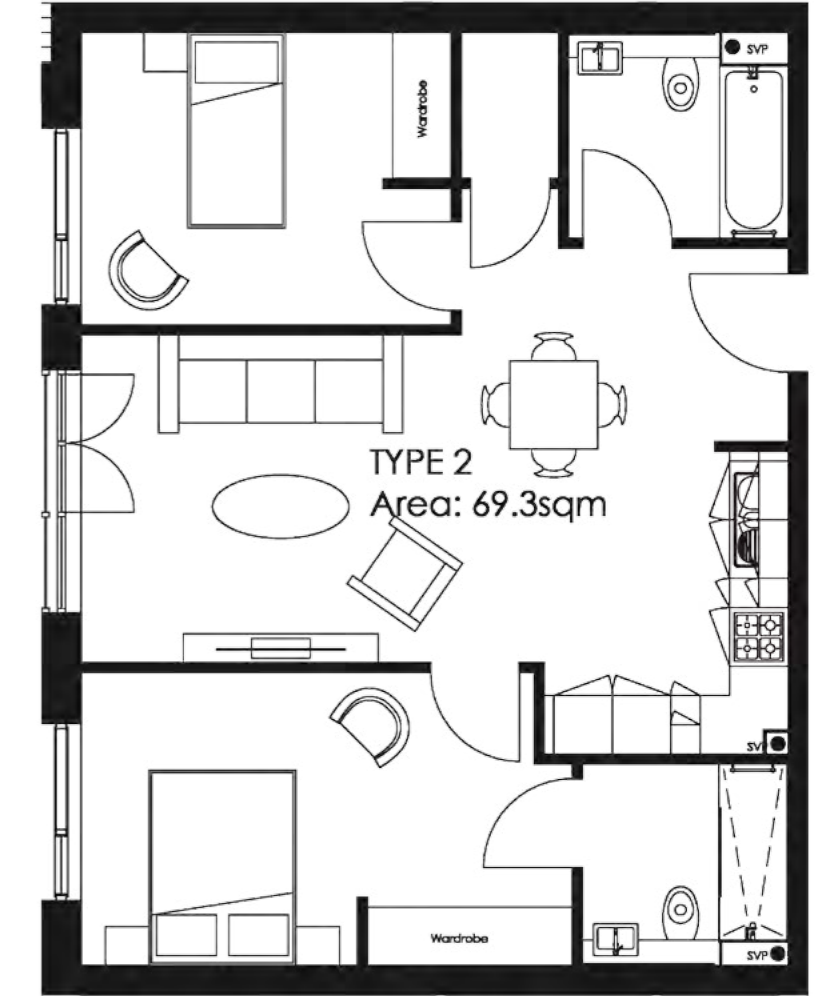
- Living/kitchen/dining room 322.9 Sq ft
- Bedroom 1 16.5 x 9.8 ft
- Ensuite 6.9 x 6.8 ft
- Bedroom 2 12.5 x 9.8 ft
- Bathroom 7.4 x 6.9 ft

## APARTMENT AVAILABLE ON

Garden | First | Second | Third | Fourth | Fifth | Sixth | Seventh floors

## TYPE 2 APARTMENT NUMBERS:

13, 30, 113, 132, 140, 213, 232, 240, 313, 332, 340, 412, 431, 439, 509, 528, 536, 609, 613, 621, 702



# APARTMENT STYLE 3

## SPECIFICATION

- 2 bedroom - 2 bathroom
- Apartment size 731.9 sq ft

## ROOM DIMENSIONS

- Living/kitchen/dining room 312.2 sq ft
- Bedroom 1 19 x 9 ft
- Ensuite 6.9 x 6.8 ft
- Bedroom 2 12.5 x 9.4 ft
- Bathroom 7.4 x 6.9 ft

## APARTMENT AVAILABLE ON

Garden | First | Second | Third | Fourth | Fifth | Sixth floors

## TYPE 3 APARTMENT NUMBERS:

5, 6, 18, 19, 105, 106, 118, 119, 143, 205, 206, 218, 219, 243, 305, 306, 318, 319, 343, 404, 405, 417, 418, 442, 501, 502, 514, 515, 539, 601, 602, 624



# APARTMENT STYLE 4

## SPECIFICATION

- 2 bedroom - 2 bathroom
- Apartment size 861.1 sq ft

## ROOM DIMENSIONS

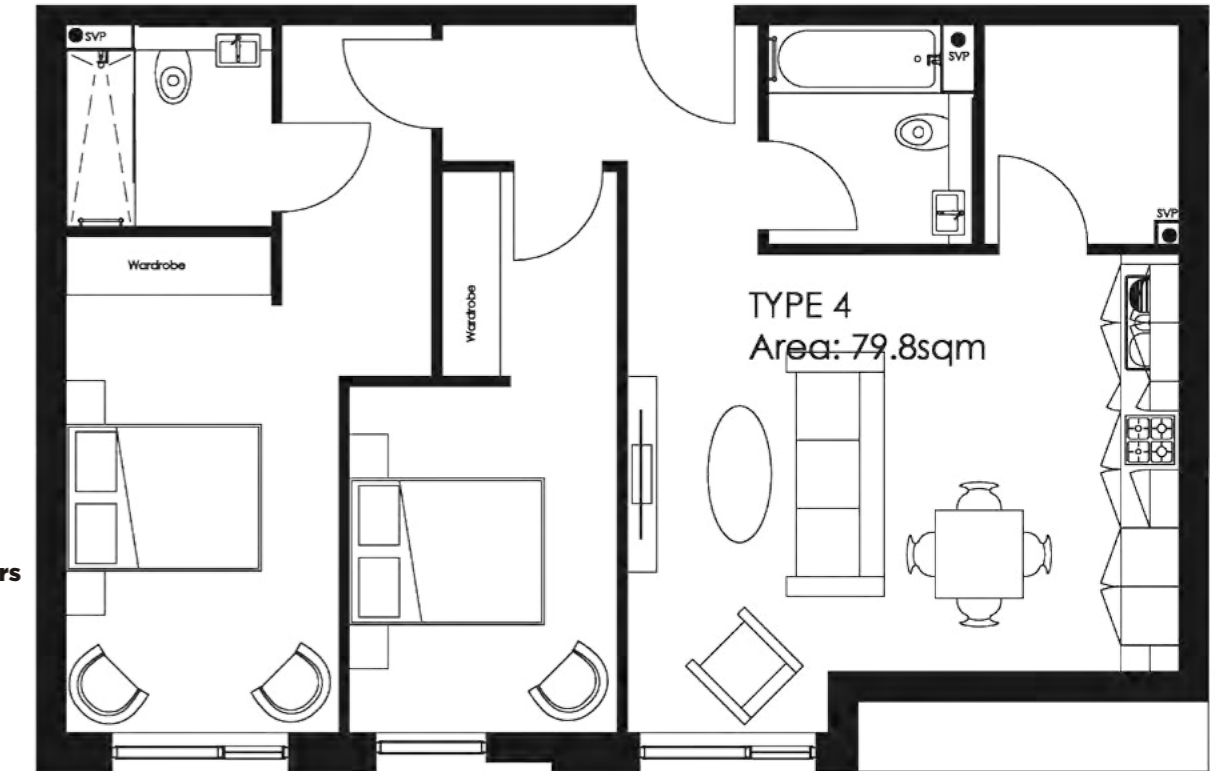
- Living/kitchen/dining room 333.7 sq ft
- Bedroom 1 16.7 x 9.2 ft
- Ensuite 6.9 x 6.8 ft
- Bedroom 2 18.5 x 9 ft
- Bathroom 7.4 x 6.9 ft

## APARTMENT AVAILABLE ON

Garden | First | Second | Third | Fourth | Fifth | Sixth | Seventh floors

## TYPE 4 APARTMENT NUMBERS:

34, 135, 235, 335, 434, 531, 616, 705



# APARTMENT STYLE 5

## SPECIFICATION

- 2 bedroom - 2 bathroom
- Apartment size 904.2 sq ft

## ROOM DIMENSIONS

- Living/kitchen/dining room 290.6 sq ft
- Bedroom 1 26.2 x 9.2 ft
- Ensuite 6.9 x 6.8 ft
- Bedroom 2 19 x 9 ft
- Bathroom 7.4 x 6.9 ft

## APARTMENT AVAILABLE ON

First | Second | Third | Fourth | Fifth | Sixth floors

## TYPE 5 APARTMENT NUMBERS:

142, 242, 342, 441, 538, 623



# APARTMENT STYLE 6

## SPECIFICATION

- 2 bedroom - 2 bathroom
- Apartment size 688.9 sq ft

## ROOM DIMENSIONS

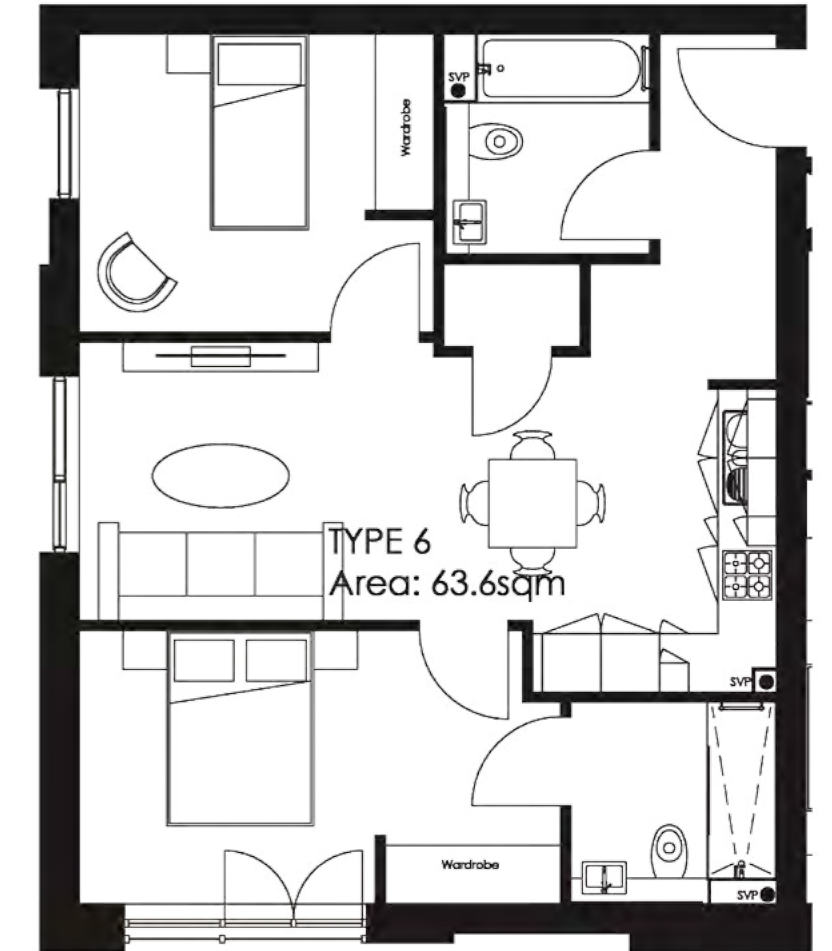
- Living/kitchen/dining room 279.9 sq ft
- Bedroom 1 16.2 x 9.2 ft
- Ensuite 6.9 x 8.7 ft
- Bedroom 2 11.9 x 10.0 ft
- Bathroom 7.4 x 6.9 ft

## APARTMENT AVAILABLE ON

Garden | First | Second | Third | Fourth | Fifth | Sixth floors

## TYPE 6 APARTMENT NUMBERS:

17, 28, 117, 130, 145, 217, 230, 245, 317, 330, 345, 416, 429, 444, 513, 526, 541, 626



# APARTMENT STYLE 7

## SPECIFICATION

- 1 bedroom - 1 bathroom
- Apartment size 462.8 sq ft

## ROOM DIMENSIONS

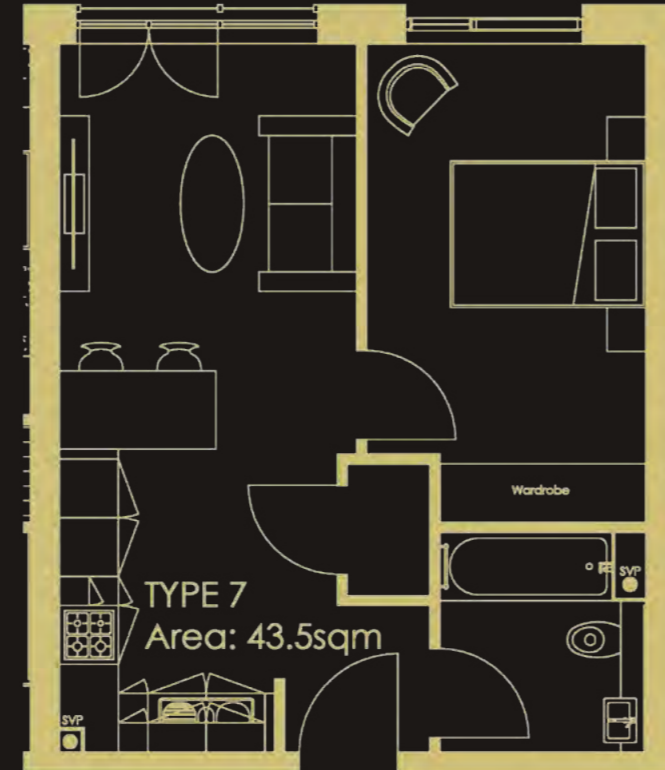
- Living/kitchen/dining room 247.6 sq ft
- Bedroom 16.1 x 9.4 ft
- Bathroom 7.4 x 6.9 ft

## APARTMENT AVAILABLE ON

Garden | First | Second | Third | Fourth | Fifth | Sixth | Seventh floors

## TYPE 7 APARTMENT NUMBERS:

7, 9, 11, 22, 23, 31, 33, 107, 109, 111, 123, 124, 125, 133, 136, 144, 146, 207, 209, 211, 223, 224, 225, 233, 236, 244, 246, 307, 309, 311, 323, 324, 325, 333, 336, 344, 346, 406, 408, 410, 422, 423, 424, 432, 435, 443, 445, 503, 505, 507, 519, 520, 521, 529, 532, 540, 542, 603, 605, 607, 614, 617, 625, 627, 703, 706



# APARTMENT STYLE 8

## SPECIFICATION

- 1 bedroom - 1 bathroom
- Apartment size 527.4 sq ft

## ROOM DIMENSIONS

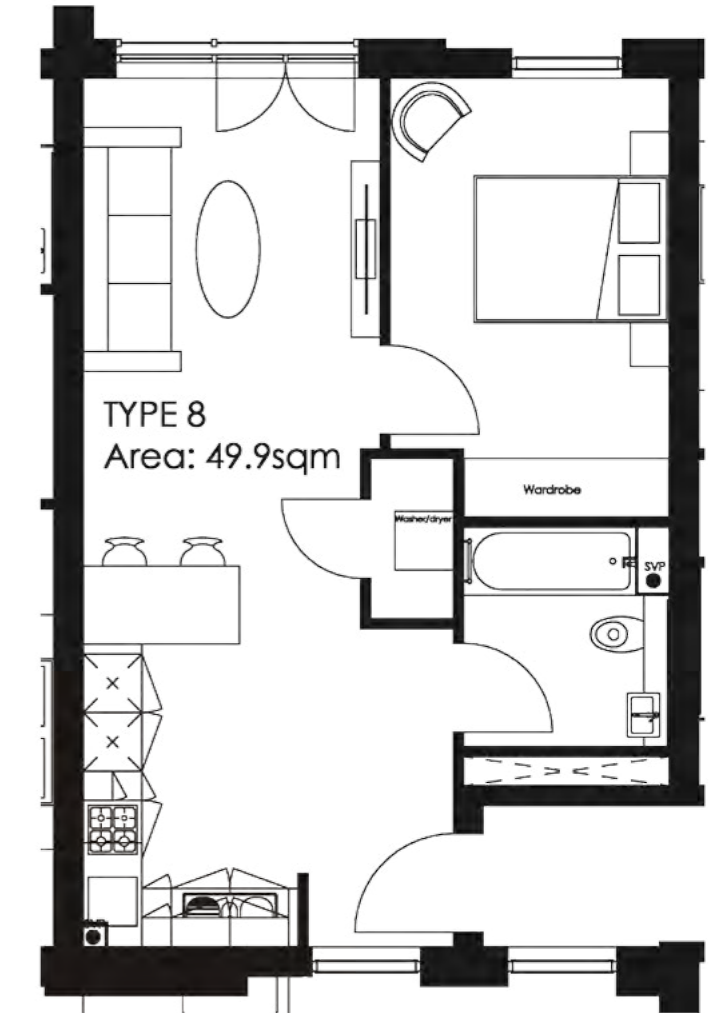
- Living/kitchen/dining room 312.2 sq ft
- Bedroom 14.7 x 9.4 ft
- Bathroom 7.4 x 6.9 ft

## APARTMENT AVAILABLE ON

Garden | First | Second | Third | Fourth | Fifth floors

## TYPE 8 APARTMENT NUMBERS:

26, 128, 228, 328, 427, 524



# APARTMENT STYLE 9

## SPECIFICATION

- 1 bedroom - 1 bathroom
- Apartment size 721.2 sq ft

## ROOM DIMENSIONS

- Living/kitchen/dining room 376.7 sq ft
- Bedroom 23.8 x 9.4 ft
- Bathroom 7.4 x 6.9 ft

## APARTMENT AVAILABLE ON

Garden | First | Second | Third | Fourth | Fifth | Sixth floors

## TYPE 9 APARTMENT NUMBERS:

8, 108, 208, 308, 407, 504, 604



# APARTMENT STYLE 10

## SPECIFICATION

- 1 bedroom - 1 bathroom
- Apartment size 549 sq ft

## ROOM DIMENSIONS

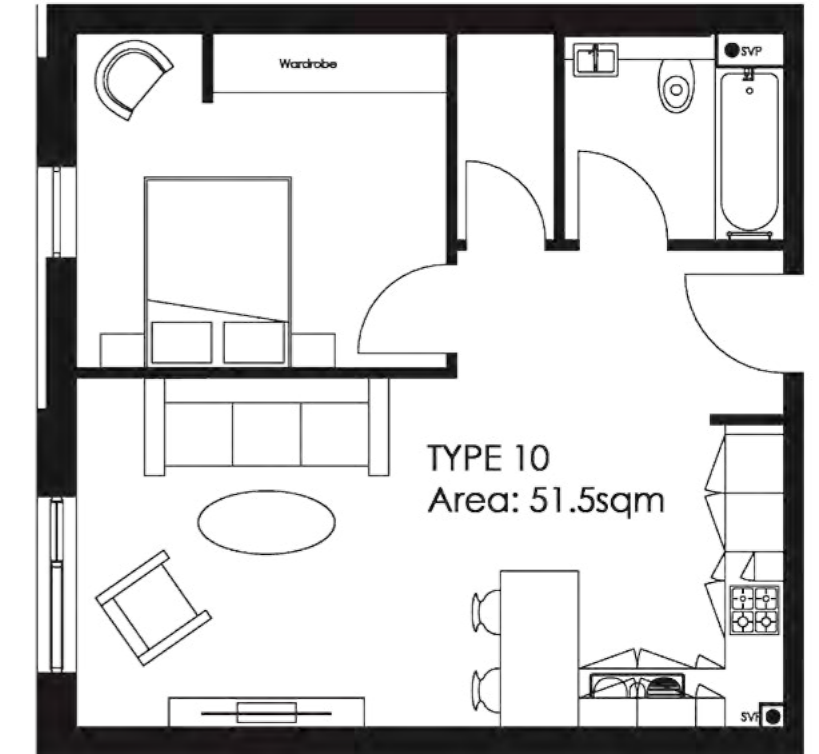
- Living/kitchen/dining room 322.9 sq ft
- Bedroom 12.5 x 11.2 ft
- Bathroom 7.4 x 6.9 ft

## APARTMENT AVAILABLE ON

Garden floor

## TYPE 10 APARTMENT NUMBERS:

12, 29





# APARTMENT STYLE 11

## SPECIFICATION

- 2 bedroom - 2 bathroom
- Apartment size 678.1 sq ft

## ROOM DIMENSIONS

- Living/kitchen/dining room 204.5 sq ft
- Bedroom 1 13.1 x 10.1 ft
- Ensuite 6.9 x 6.8 ft
- Bedroom 2 11.8 x 9 ft
- Bathroom 7.4 x 6.9 ft

## APARTMENT AVAILABLE ON

Garden | First | Second | Third | Fourth | Fifth | Sixth | Seventh floors

## TYPE 11 APARTMENT NUMBERS:

32, 134, 234, 334, 433, 530, 615, 704



# APARTMENT STYLE 12

## SPECIFICATION

- 1 bedroom - 1 bathroom
- Apartment size 559.7 sq ft

## ROOM DIMENSIONS

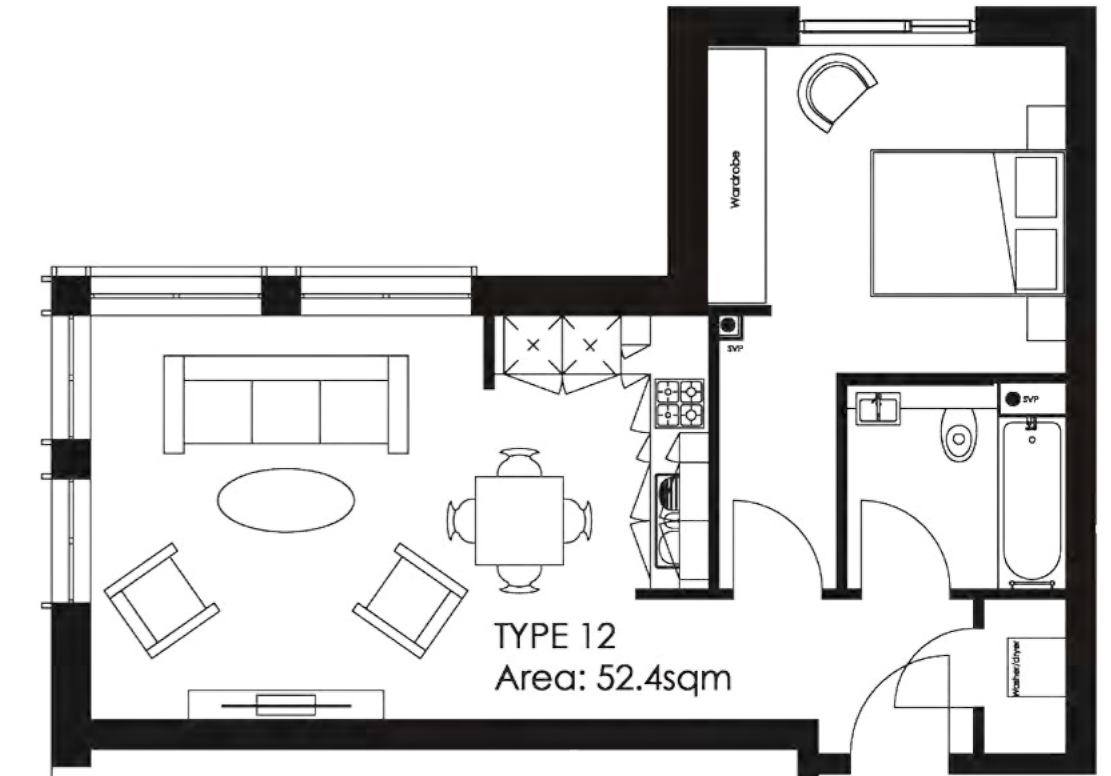
- Living/kitchen/dining room 279.9 sq ft
- Bedroom 12.1 x 11 ft
- Bathroom 7.4 x 6.9 ft

## APARTMENT AVAILABLE ON

Garden | First | Second | Third | Fourth | Fifth | Sixth floors

## TYPE 12 APARTMENT NUMBERS:

10, 110, 210, 310, 409, 506, 606



# APARTMENT STYLE 13

## SPECIFICATION

- 2 bedroom - 2 bathroom
- Apartment size 807.3 sq ft

## ROOM DIMENSIONS

- Living/kitchen/dining room 355.2 sq ft
- Bedroom 1 21.9 x 9.2 ft
- Ensuite 6.9 x 6.8 ft
- Bedroom 2 14.2 x 9.2 ft
- Bathroom 7.4 x 6.9 ft

## APARTMENT AVAILABLE ON

Garden | First | Second | Third | Fourth | Fifth floors

## TYPE 13 APARTMENT NUMBERS:

16, 27, 116, 129, 216, 229, 316, 329, 415, 428, 512, 525



# APARTMENT STYLE 14

## SPECIFICATION

- 2 bedroom - 2 bathroom
- Apartment size 785.8 sq ft

## ROOM DIMENSIONS

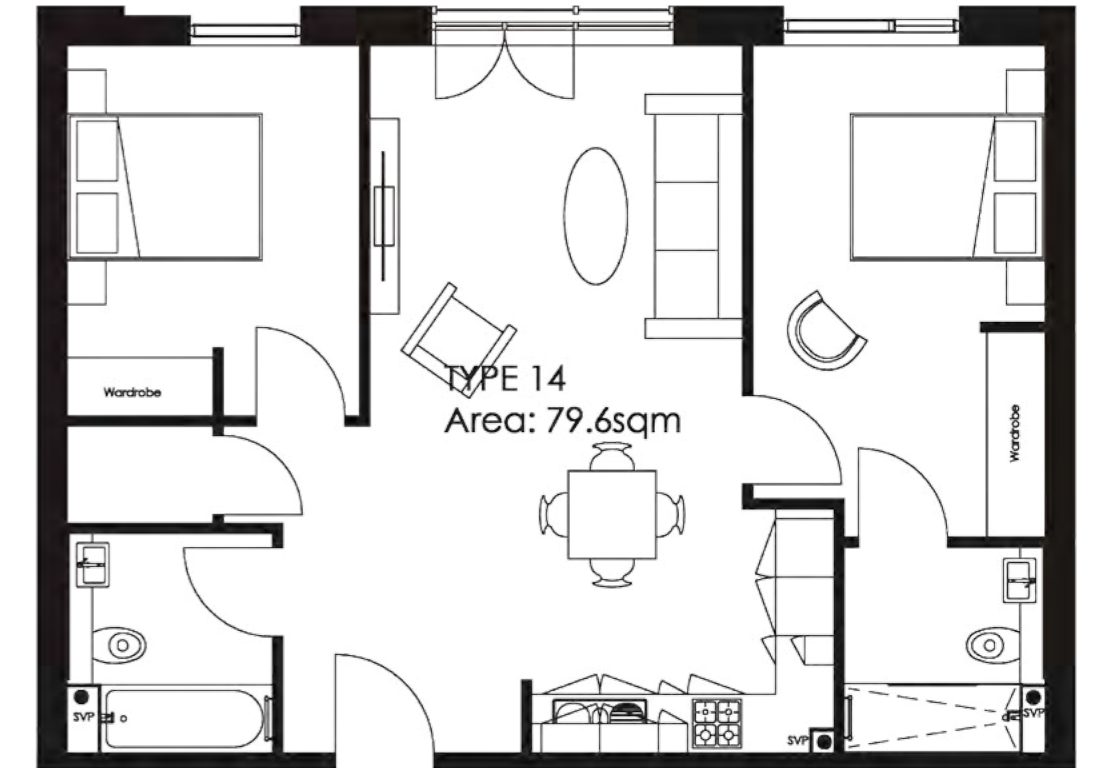
- Living/kitchen/dining room 366 sq ft
- Bedroom 1 16.5 x 9.8 ft
- Ensuite 6.9 x 6.8 ft
- Bedroom 2 12.5 x 9.8 ft
- Bathroom 7.4 x 6.9 ft

## APARTMENT AVAILABLE ON

First | Second | Third | Fourth | Fifth floors

## TYPE 14 APARTMENT NUMBERS:

122, 222, 322, 421, 518



# APARTMENT STYLE 15

## SPECIFICATION

- 1 bedroom - 1 bathroom
- Apartment size 484.4 sq ft

## ROOM DIMENSIONS

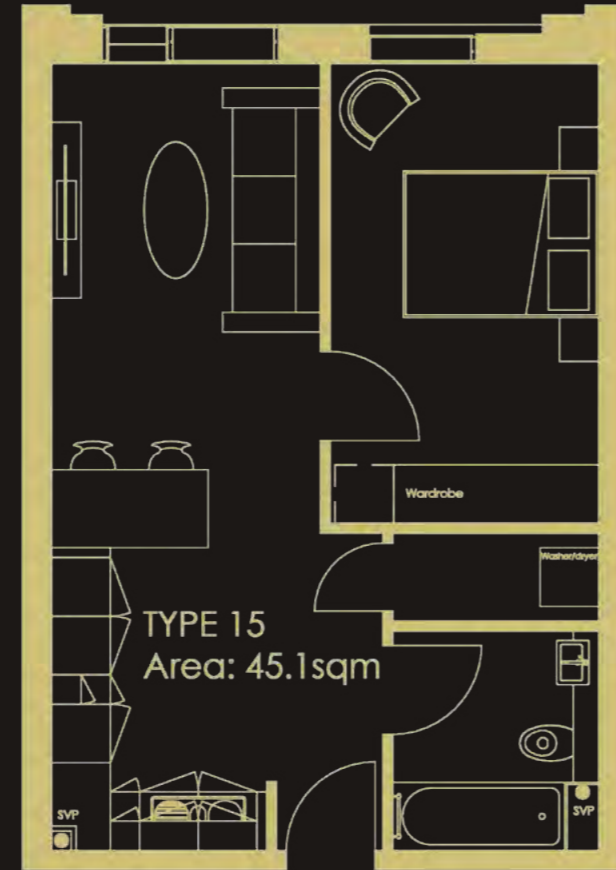
- Living/kitchen/dining room 258.3 sq ft
- Bedroom 15.4 x 9 ft
- Bathroom 7.4 x 6.9 ft

## APARTMENT AVAILABLE ON

Ground | Mezzanine | Garden | First | Second | Third | Fourth floors

## TYPE 15 APARTMENT NUMBERS:

G3, M2, M3, M4, 2, 3, 4, 102, 103, 104, 202, 203, 204, 302, 303, 304, 401, 402, 403



# APARTMENT STYLE 16

## SPECIFICATION

- 2 bedroom - 2 bathroom
- Apartment size 721.2 sq ft

## ROOM DIMENSIONS

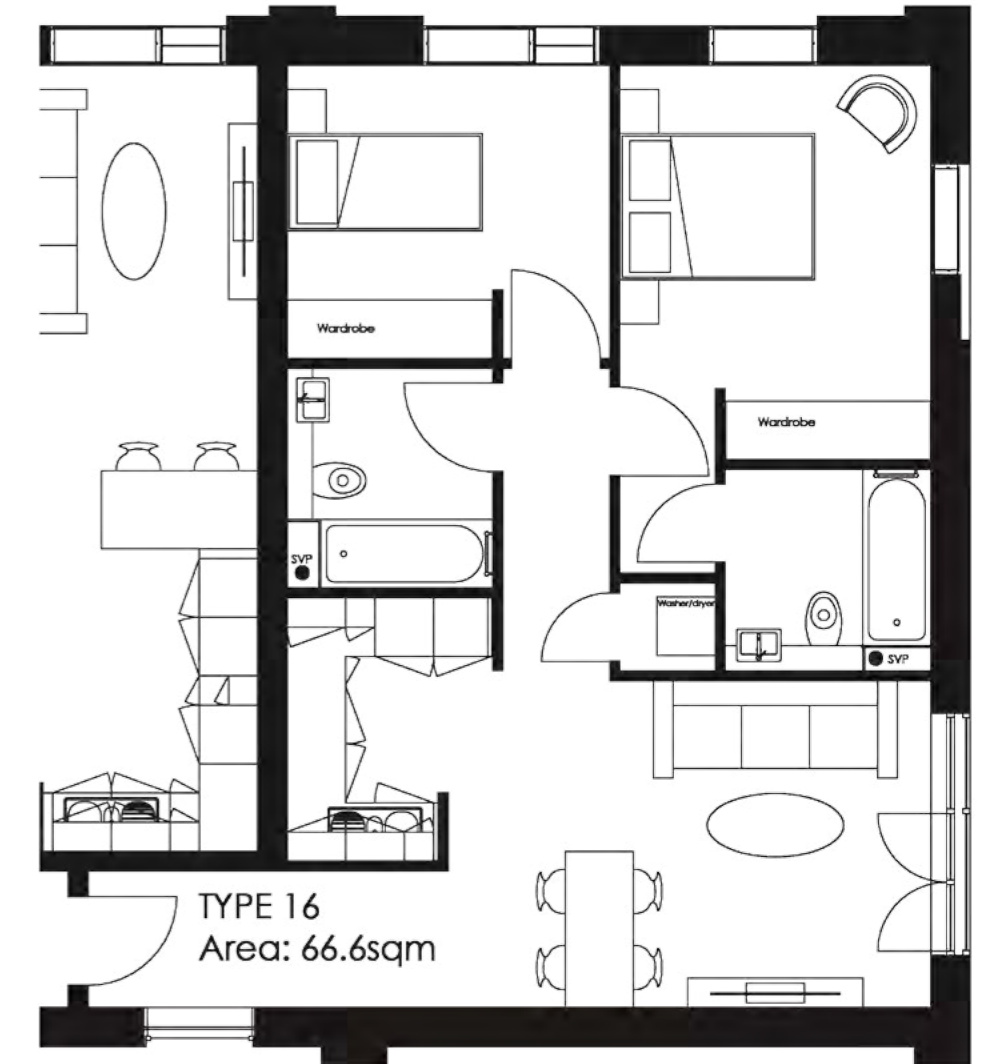
- Living/kitchen/dining room 322.9 sq ft
- Bedroom 1 13.3 x 10.5 ft
- Ensuite 6.9 x 6.8 ft
- Bedroom 2 9.9 x 10.9 ft
- Bathroom 7.4 x 6.9 ft

## APARTMENT AVAILABLE ON

Ground | Mezzanine | Garden | First | Second | Third floors

## TYPE 16 APARTMENT NUMBERS:

G1, M1, 1, 101, 201, 301



# APARTMENT STYLE 17

## SPECIFICATION

- 2 bedroom - 2 bathroom
- Apartment size 828.8 sq ft

## ROOM DIMENSIONS

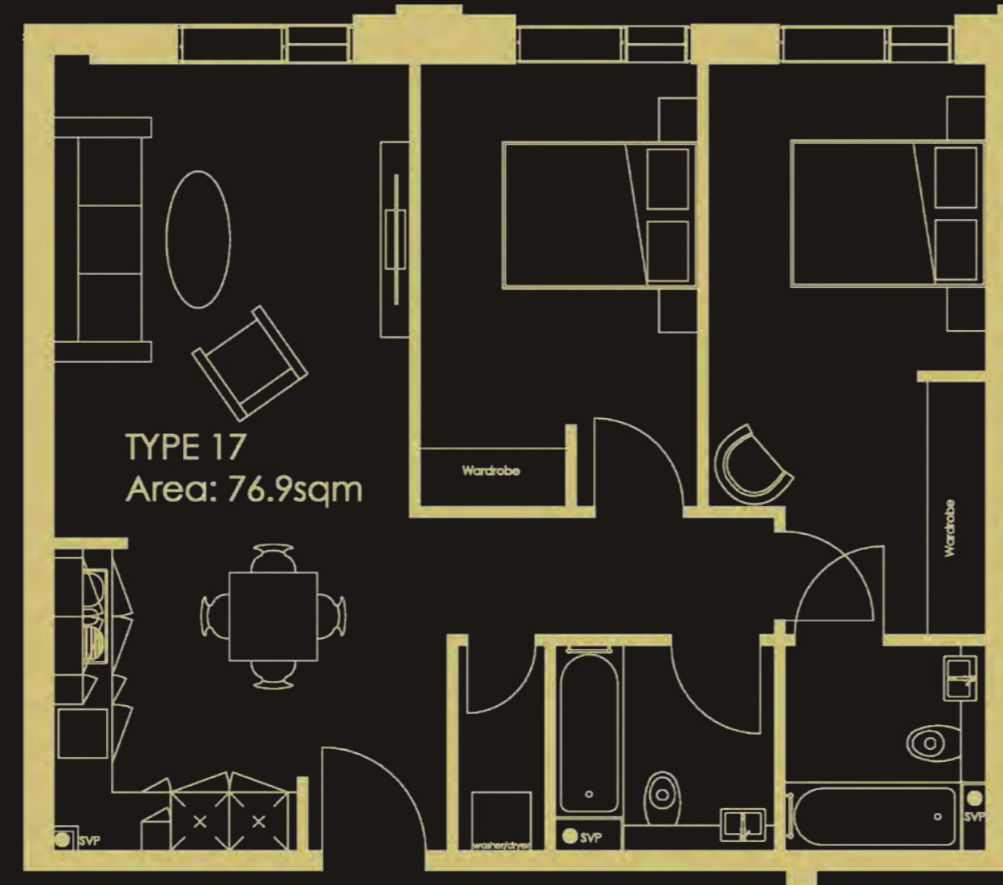
- Living/kitchen/dining room 376.7 sq ft
- Bedroom 1 19.2 x 9.4 ft
- Ensuite 6.9 x 6.8 ft
- Bedroom 2 14.9 x 9.4 ft
- Bathroom 7.4 x 6.9 ft

## APARTMENT AVAILABLE ON

Ground floor

## TYPE 17 APARTMENT NUMBERS:

G2



**EXPLORE A CITY WHERE EVERYTHING  
IS ONLY A HEARTBEAT AWAY**

**Importance Notice:** The information provided in this brochure is for general reference only and should not be relied upon in anyway. Although high standards have been used in the preparation of the information, analysis, views and projects, no responsibility or liability whatsoever can be accepted by Top Capital Group or its appointed sales agents. Details are correct at time of print, October 2017.

Artist impressions are illustrative only.

THE  
AXIUM  
EXPERIENCE THE HEART OF THE CITY