

HUMPHREYS

ESTATE & LETTING AGENTS



155 SADDLERY WAY,
CHESTER, CH1 4LZ

Shared Ownership £77,500

2 BEDS | 1 BATHS | 1 LIVING

SALES

e: chestersales@humphreysofchester.co.uk

t: 01244 401100

WWW.HUMPHREYSOFCHESTER.CO.UK



COMMENT FROM SAM JOHNSON OF HUMPHREYS

This is a fantastic opportunity for first time buyers, young professionals or those looking to downsize to acquire a minimum 50% share of a lovely two bedroom apartment within strolling distance of Chester centre. Saddlery Way is a select modern development with apartments with this particular unit also benefiting of one allocated parking space. Local connection is required.

The subject property is well presented throughout and offers ready to move into accommodation. It can be found to the ground floor and features an inner hallway leading to a living/kitchen area, two bedrooms and a three piece suite bathroom.

For a personal description of the property or to arrange a viewing, please contact myself or a member of the team at our office.

LAYOUT AND DIMENSIONS

Please refer to the floorplan

1. Money Laundering Regulations: Intending purchasers will be asked to produce identification documentation at a later stage and we would ask for your co-operation in order that there will be no delay in agreeing the sale.

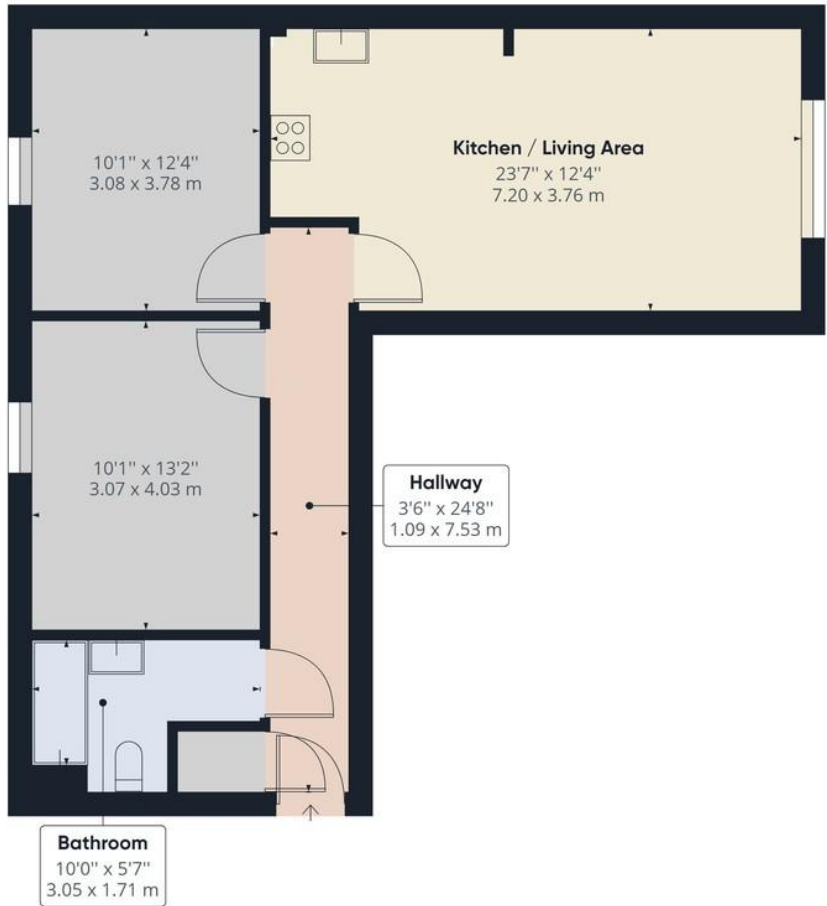


2. General: While we endeavour to make our sales particulars fair, accurate and reliable, they are only a general guide to the property and, accordingly, if there is any point which is of particular importance to you, please contact the office and we will be pleased to check the position for you, especially if you are contemplating travelling some distance to view the property.

3. Measurements: These approximate room sizes are only intended as general guidance. You must verify the dimensions carefully before ordering carpets or any built-in furniture.

4. Services: Please note we have not tested the services or any of the equipment or appliances in this property, accordingly we strongly advise prospective buyers to commission their own survey or service reports before finalising their offer to purchase.





Approximate total area⁽¹⁾
 693.03 ft²
 64.38 m²

(1) Excluding balconies and terraces

While every attempt has been made to ensure accuracy, all measurements are approximate, not to scale. This floor plan is for illustrative purposes only.

GIRAFFE360



H U M P H R E Y S
ESTATE & LETTING AGENTS

WWW.HUMPHREYSOFCHESTER.CO.UK

