



FORREL | 4 BEDROOM

WEAVERS WAY



A master bedroom with ensuite, two further double bedrooms, and a single bedroom make the Forrels comfortable and spacious luxury homes.

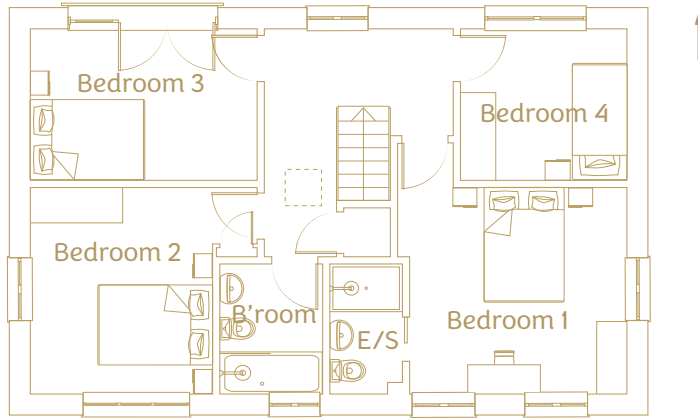
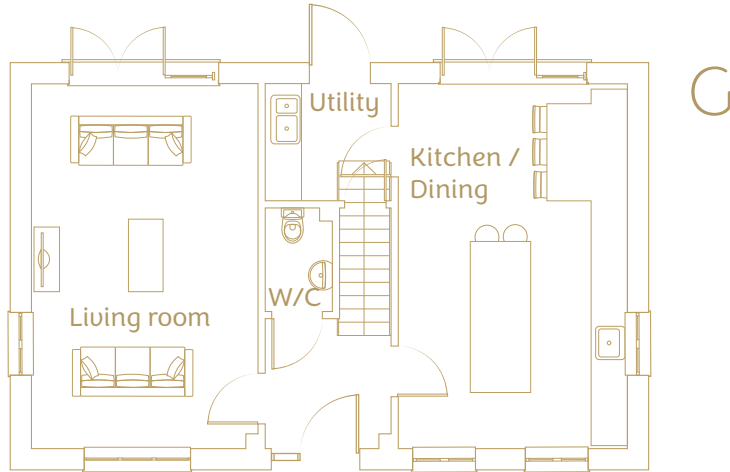
Downstairs, both the large open plan kitchen-diner and the separate living room open onto the private garden. From here, inspirational views across the pastoral landscapes of Mid-Devon beckon.

Inside, the high-end specification includes a solid wood fitted Shaker kitchen with quartz worktops, appliances by Siemens, and a dedicated laundry room. Engineered

oak floors, underfloor heating, and wool carpets feature throughout.

The Forrels are also designed to welcome good levels of natural light through high-performing double-glazed windows. These are constructed from aluminium-clad timber by Scandinavian manufacturer NorDan. As well as being great for the physical and mental health of those who live here, these windows contribute to the energy efficiency of the building.

PLOT 3 & 4



Total internal area: 119.0 sq m

Ground floor

Living 22.6m² | 3.7m x 6.1m
 Kitchen / Dining 22.9m² | 3.8m x 6.1m
 Utility 4.0m² | 2.1m x 1.9
 W/C 1.9m² | 1.1m x 1.7m

First floor

Bedroom 1 14.4m² | 3.6m x 3.4m
 Ensuite 2.6m² | 1.2m x 2.2m
 Bedroom 2 12.2m² | 3.0m x 3.4m
 Bedroom 3 9.8m² | 3.7m x 2.5m
 Bedroom 4 6.9m² | 3.8m x 2.5m
 Bathroom 3.7m² | 1.7m x 2.2m

PLOT 3 & 4