



16 East Park Road, Harrogate

Offers in Region of £600,000



MYRINGS
Harrogate's Family Estate Agent



16 East Park Road

Harrogate, Harrogate

'Manor Place' is a splendid 6 bedroom Victorian town house built in 1874 having been in the same ownership since 1950 retaining many original features over three floors and a lower ground floor cellar, standing in wonderful walled mature gardens located just a moments walk from the York Place Stray parkland.

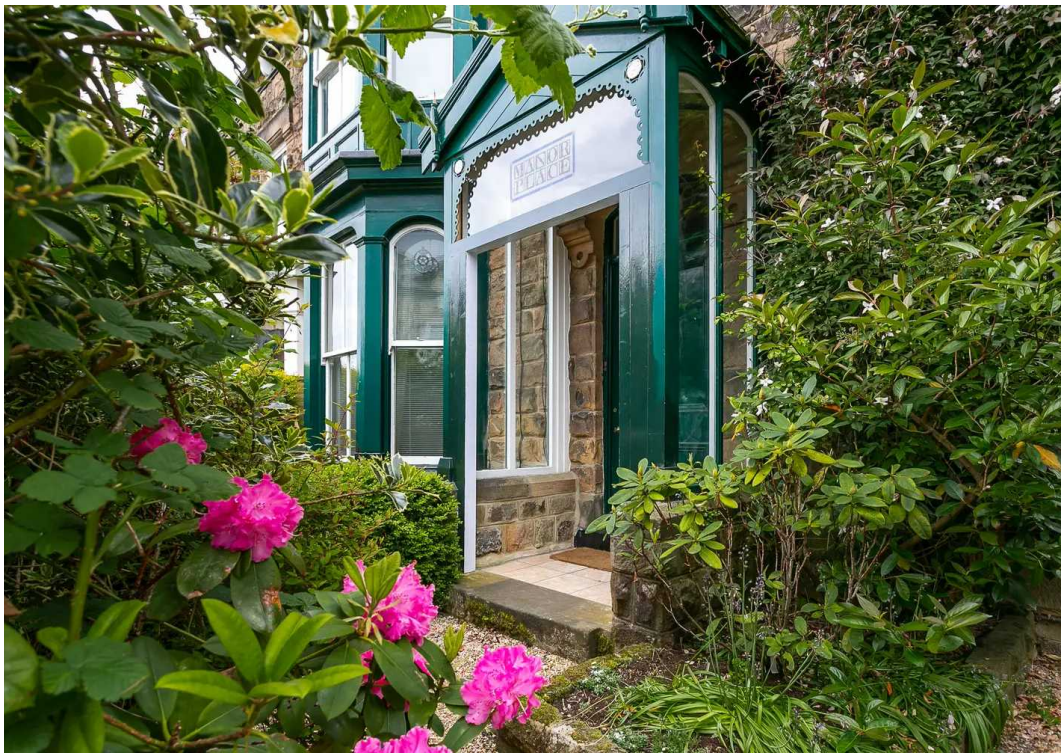
Council Tax band: E

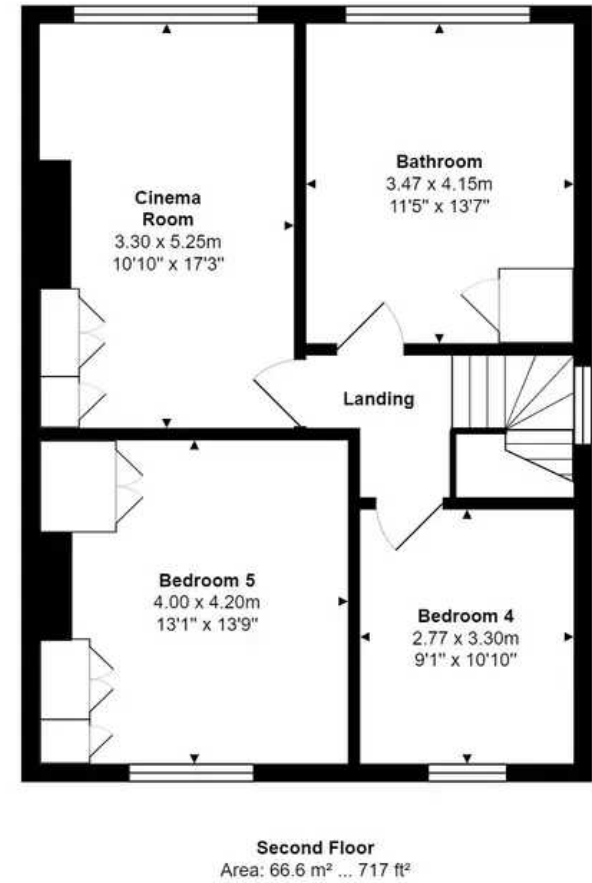
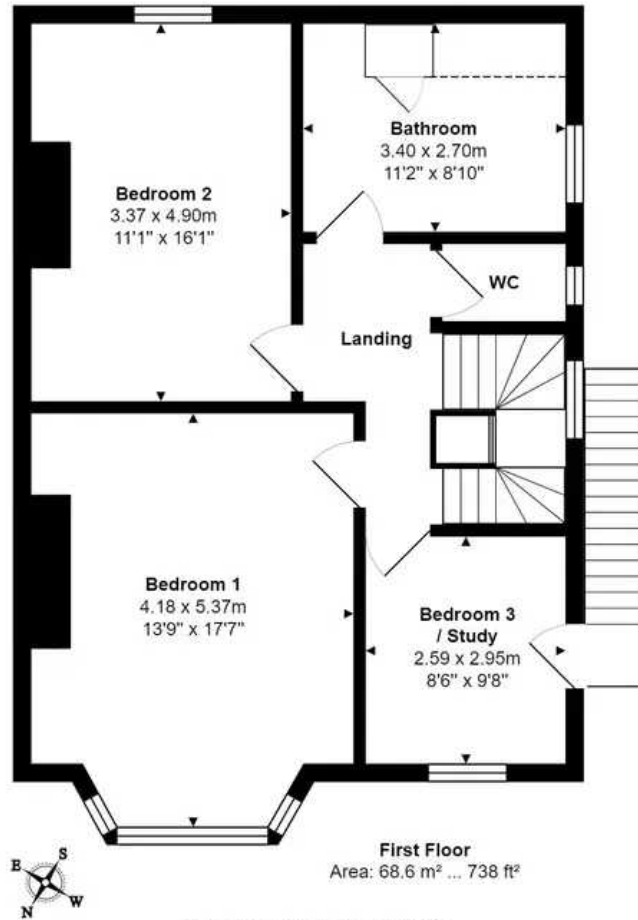
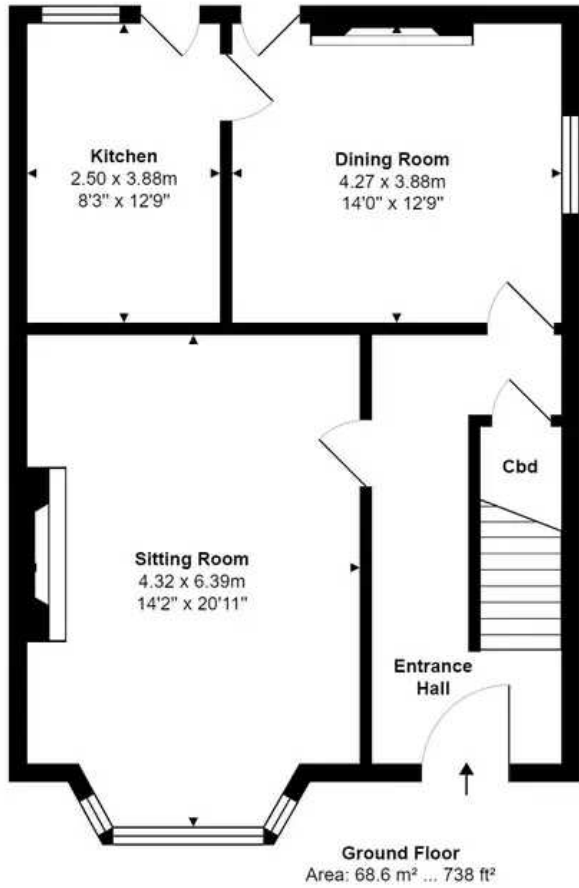
Tenure: Freehold

- MANY ORIGINAL FEATURES
- PRIVATE SIDE WALLED COURTYARD GARDENS
- CLOSE TO YORK PLACE STRAY PARKLAND
- OFFERING POTENTIAL TO RECONFIGURE
- CELLAR



MYRINGS





Total Area: 203.7 m² ... 2193 ft²

All measurements are approximate and for display purposes only.





Myrings Estate Agents

Myrings Estate Agents Ltd, 10 Princes Square - HG1 1LX

01423
566400

• enquiries@myringsestateagents.com • <http://myringsestateagents.com/>

WE'VE WON!

Double GOLD Winners
Placed in the top 2% of Estate Agents in the country by The Best Estate Agency Guide
Awarded for marketing, customer service & results