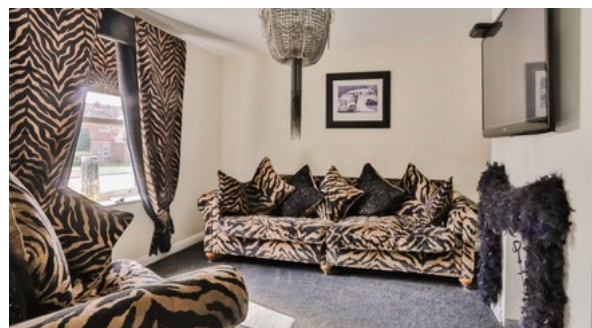


Hull Road, Skirlaugh

Guide Price **£520,000 - £540,000**  5  4  3



- ❖ Impressive Detached Self-built Property
- ❖ High Specification Throughout
- ❖ Spacious And Contemporary Family Home
- ❖ Five Bedrooms
- ❖ Three En-suites
- ❖ Games Room
- ❖ Generous Off Road Parking
- ❖ Double Garage
- ❖ Low Maintenance Garden And Entertaining Area
- ❖ Freehold



Guide Price

£520,000