



## Keswick

Offers in the region of £240,000

14a Southey Street, Keswick, Cumbria, CA12 4EF

A one bedroom self-contained ground floor apartment most conveniently situated on a side street in Keswick town centre and currently used as a successfully established holiday rental business.

### Quick Overview

Self-contained ground floor apartment  
Convenient side street location in  
Keswick town centre  
Successfully established holiday letting  
use  
Double bedroom  
Living room and fitted kitchen  
Self contained rear yard



1



1



1



D



Superfast  
80 Mbps

Property Reference: KW0227



Living Room



Bedroom



Kitchen



Bathroom

## Accommodation

### Ground Floor:

#### Communal Entrance Hall

#### Living Room 12' 9" x 12' 2" (3.89m x 3.71m)

With feature fireplace including period surround and electric stove style fire, radiator, built in chimney side cupboard and shelving, under stairs cupboard.

#### Bedroom 14' 10" x 11' 10" (4.52m x 3.61m)

With front bay window, radiator, built in cupboard.

#### Kitchen 10' 4" x 7' 6" (3.15m x 2.29m)

With fitted base and wall units, sink unit with mixer tap, integrated oven, hob and extractor unit, radiator.

#### Rear Hall 8' 2" x 4' 8" (2.49m x 1.42m)

With gas boiler, external rear door.

#### Bathroom

With WC, wash hand basin, bath with shower over, radiator.

#### Outside:

Self contained rear yard with seating area, pedestrian access.

#### Rateable Value

£2,900.

#### Services

Mains water, gas, electricity and drainage. Gas central heating to radiators.

#### Tenure

999 lease from 26 October 1984.

#### Viewing

By appointment with Hackney & Leigh's Keswick office.

#### Directions

From Keswick town centre proceed onto Station Street and turn first left onto Southey Street.

#### Price

Offers in the region of £240,000 are invited.



Living Room

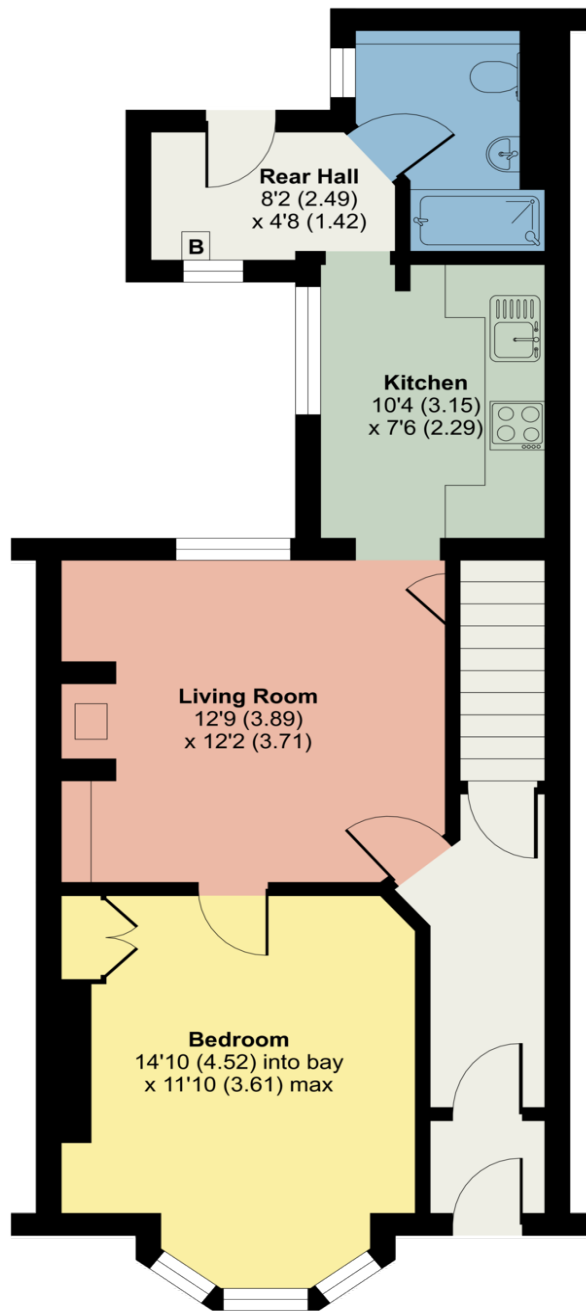


Seating Area

# 14a Southey Street, Keswick

Approximate Area = 589 sq ft / 54.7 sq m

For identification only - Not to scale



**GROUND FLOOR**



**Certified  
Property  
Measurer**

Floor plan produced in accordance with RICS Property Measurement Standards incorporating International Property Measurement Standards (IPMS2 Residential). © nichecom 2023. Produced for Hackney & Leigh. REF: 944461

All permits to view and particulars are issued on the understanding that negotiations are conducted through the agency of Messrs. Hackney & Leigh Ltd. Properties for sale by private treaty are offered subject to contract. No responsibility can be accepted for any loss or expense incurred in viewing or in the event of a property being sold, let, or withdrawn. Please contact us to confirm availability prior to travel. These particulars have been prepared for the guidance of intending buyers. No guarantee of their accuracy is given, nor do they form part of a contract. Broadband speeds estimated and checked by <https://checker.ofcom.org.uk/en-gb/broadband-coverage> on 14/02/2023.

Request a Viewing Online or Call 01768 741741