



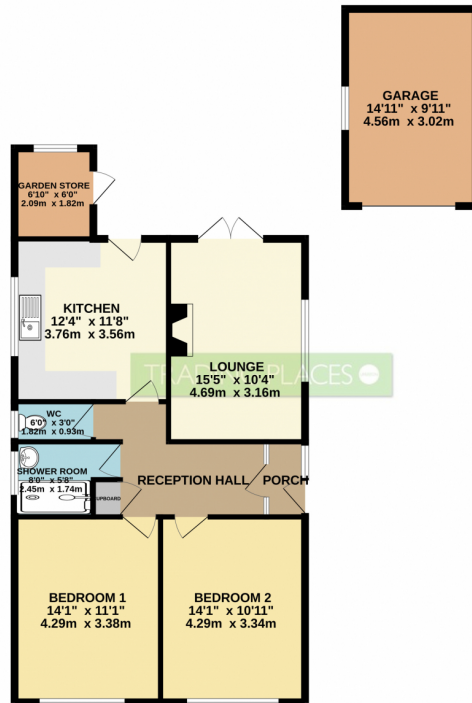
 2  
Bedrooms

 1  
Bathroom



TRADING PLACES ESTATE AGENTS are pleased to offer for sale this delightful TWO DOUBLE BEDROOM DETACHED bungalow situated in a highly sought after residential location just off Irlam Road in Flixton. Warmed by Gas central heating and benefiting from double glazing, this desirable bungalow briefly comprises; entrance porch, a warm and welcoming entrance hallway, two double bedrooms, living room with fireplace and double glazed patio doors, shower room with separate wc, fitted kitchen. Brick built garden store. An detached garage provides space for a vehicle or additional storage. Externally,lawned garden to the front of the property with a block paved driveway provides off road parking for several vehicles. To the rear, a private, mainly lawned rear garden can be found with well stocked borders, fenced boundaries and ample space for a table and chairs during those summer months. We thoroughly recommend an internal inspection to appreciate this superb detached bungalow.

GROUND FLOOR  
957 sq.ft. (88.9 sq.m.) approx.



TOTAL FLOOR AREA: 957 sq.ft. (88.9 sq.m.) approx.

Whilst every attempt has been made to ensure the accuracy of the floorplan contained here, measurements of doors, windows, rooms and any other items are approximate and no responsibility is taken for any error, omission or mis-statement. This plan is for illustrative purposes only and should be used as such by any prospective purchaser. The services, systems and appliances shown have not been tested and no guarantee as to their operability or efficiency can be given.  
Made with Metropix (2022)

