

Compton

Shoreditch

25 Christopher Street
EC2A 2BS

Economical partially fitted office
space to lease with excellent natural
light

For Rent
6,573 ft²

020 7101 2020
compton.london



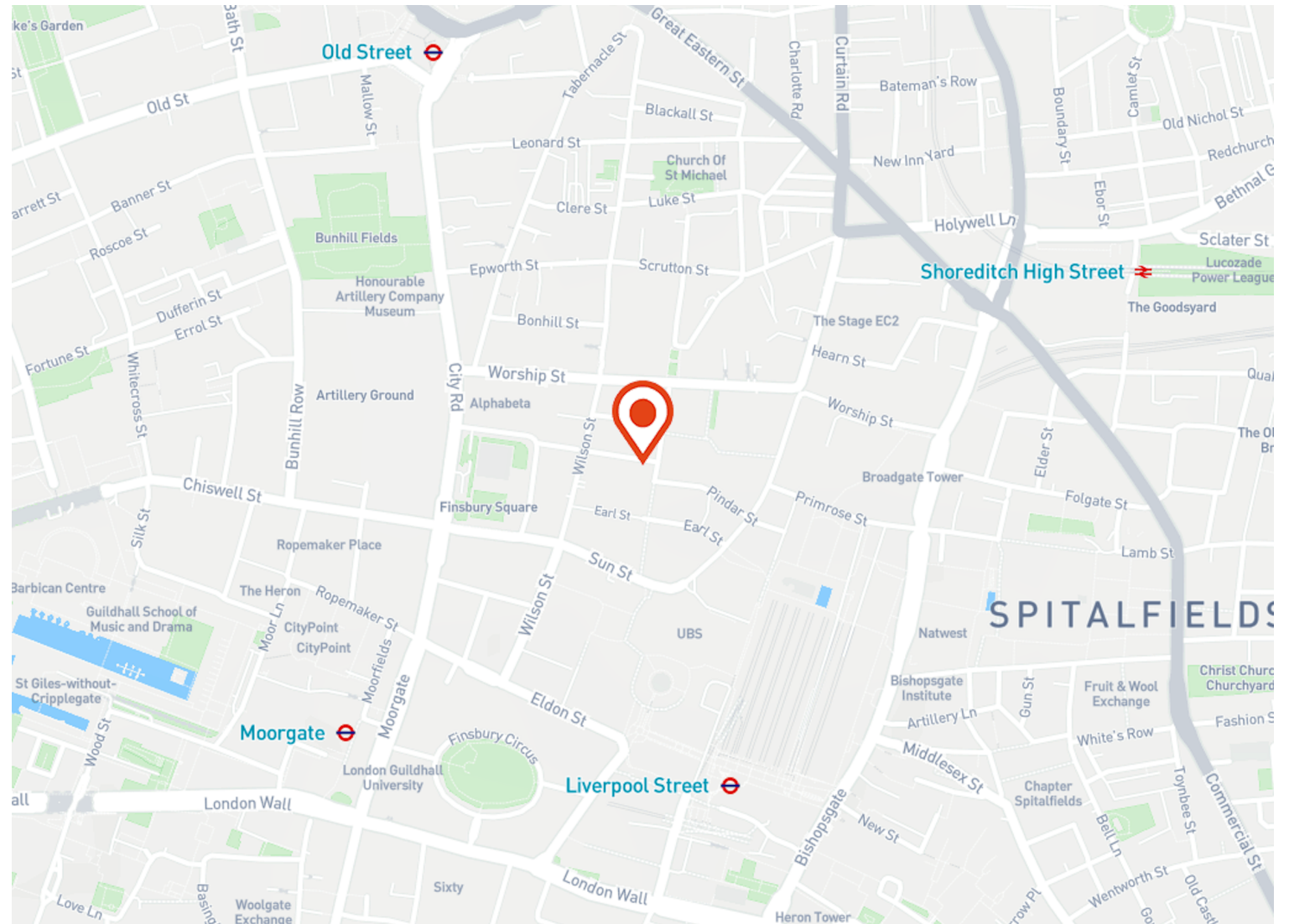
Compton

Shoreditch

25 Christopher Street
EC2A 2BS

Economical partially fitted office
space to lease with excellent natural
light

For Rent
6,573 ft²



Location

The building is situated in the heart of Shoreditch and is within walking distance to Old Street, Liverpool Street, Shoreditch High Street and Moorgate stations. Whitecross Street food market is also within a short distance to the building.

Shoreditch is London's latest hot spot with a captivating mix of bars, restaurants and art galleries. It has transformed from a commercial district into a thriving metropolis of young media, design and fashion companies, and is often compared to the Tribeca district in New York.

Compton

Shoreditch

25 Christopher Street
EC2A 2BS

Economical partially fitted office
space to lease with excellent natural
light

For Rent
6,573 ft²



020 7101 2020
compton.london

External

Compton

Shoreditch

25 Christopher Street
EC2A 2BS

Economical partially fitted office
space to lease with excellent natural
light

For Rent
6,573 ft²



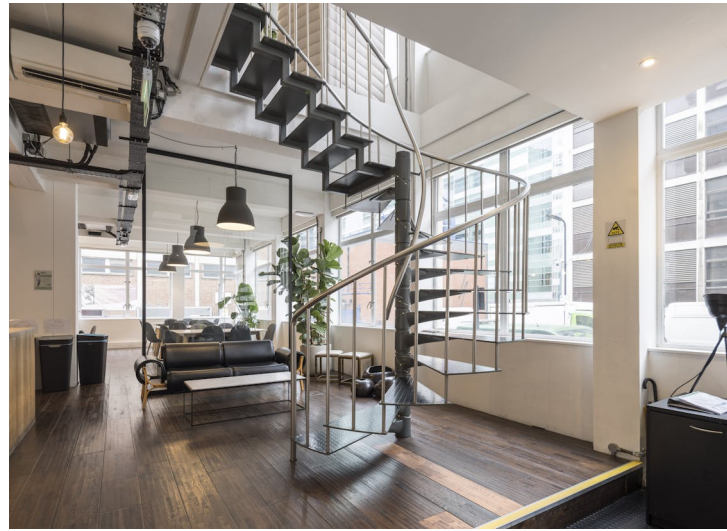
Compton

Shoreditch

25 Christopher Street
EC2A 2BS

Economical partially fitted office
space to lease with excellent natural
light

For Rent
6,573 ft²



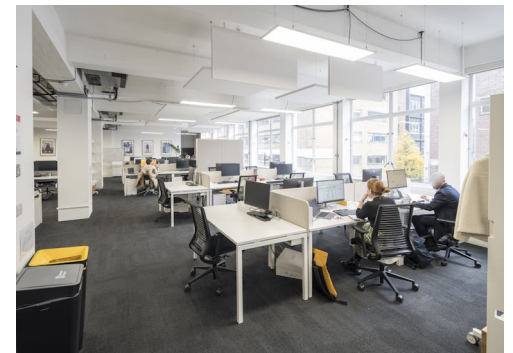
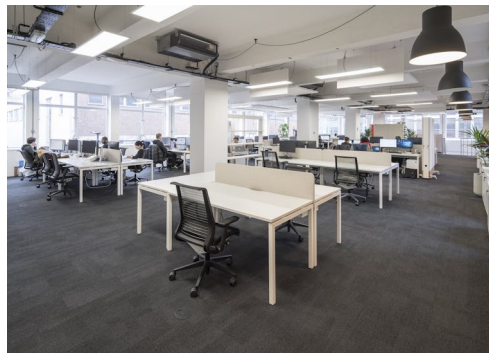
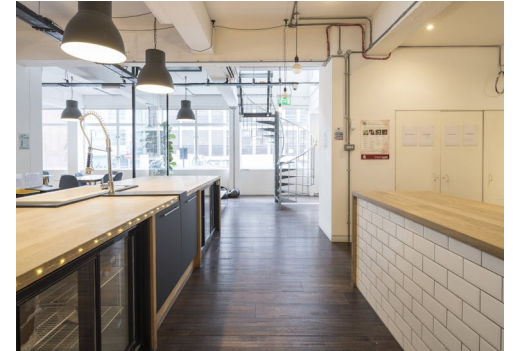
Compton

Shoreditch

25 Christopher Street
EC2A 2BS

Economical partially fitted office
space to lease with excellent natural
light

For Rent
6,573 ft²



Compton

Shoreditch

25 Christopher Street
EC2A 2BS

Economical partially fitted office space to lease with excellent natural light

For Rent

6,573 ft²

Amenities

- Fitted office floor with excellent natural light
- Modern lighting
- Generous floor to ceiling height throughout
- Air conditioning
- Raised Flooring
- Multiple meeting rooms
- Manned Reception

Description

Economical fitted office space available for rent. The building also benefits from a commissionaire.

25 Christopher Street provides affordable office space in the heart of Shoreditch. The space is situated on the Third floor of the building and is available by way of flexible lease terms directly with the landlord subject to terms. The office floor is currently available partially-fitted.

Compton

Shoreditch

25 Christopher Street
EC2A 2BS

Economical partially fitted office space to lease with excellent natural light

For Rent

6,573 ft²

Content

Watch the film



View on Website



Viewings

Via sole agents only

Terms

Flexible lease terms available

Lease Term

New full repairing & insuring lease available for a term by arrangement direct from the Landlord

VAT

The property is elected for VAT

Local Authority

City of London

Additional Amenity

Subject to terms and conditions, the Landlord will provide complimentary Director's access membership to the Eight Members Club.

The membership provides access to a wide range of amenities such as a cinema, gym, drinks lounge, private gardens, private dining, meeting rooms and events space.

Compton

Shoreditch

25 Christopher Street
EC2A 2BS

Economical partially fitted office space to lease with excellent natural light

For Rent

6,573 ft²

Floor Areas & Outgoings

The accommodation comprises of the following

Name	sq ft	Rent (sq ft)	Rates Payable (sq ft)	Service Charge (sq ft)	Total /sq ft	Total month	Total year	Availability
3rd	6,573	£35	£14.40	£10	£59.40	£32,536.35	£390,436.20	Available
Unit - Ground & 1st	10,206	£35	£15.43	£10	£60.43	£51,395.72	£616,748.58	Let

Compton

Contact Us

All appointments to view must be arranged via sole agents, Compton, through —

Josh Perlmutter
jp@compton.london
07814 699 096

Shaun Simons
ss@compton.london
07788 423131

