

Compton

London

60-62 Commercial Street
E1 6LT

Newly refurbished, partially fitted
office space in converted
warehouse in the heart of
Spitalfields.

For Rent
1,785 ft²

020 7101 2020
compton.london



Compton

London

60-62 Commercial Street
E1 6LT

Newly refurbished, partially fitted office space in converted warehouse in the heart of Spitalfields.

For Rent
1,785 ft²



Location

Located in the heart of Spitalfields with stations such as Liverpool Street, Shoreditch High Street and Aldgate East just a stone's throw away, in addition to ample access to bus routes. Local amenities include Great Eastern Street and the renowned Leonard Circus food market, Shoreditch is a buzzing area filled with leisure activities including art and food venues such as Boxpark, enticing a mix businesses within the creative and tech industries.

Compton

London

60-62 Commercial Street
E1 6LT

Newly refurbished, partially fitted
office space in converted
warehouse in the heart of
Spitalfields.

For Rent

1,785 ft²



020 7101 2020
compton.london

Street View

Compton

London

60-62 Commercial Street
E1 6LT

Newly refurbished, partially fitted
office space in converted
warehouse in the heart of
Spitalfields.

For Rent

1,785 ft²



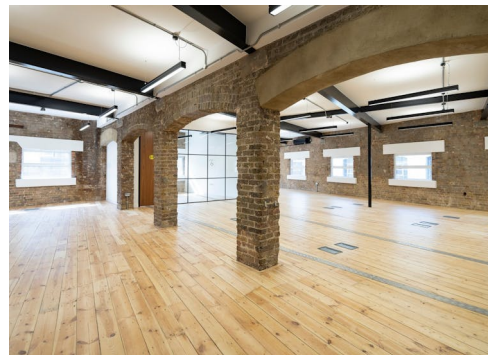
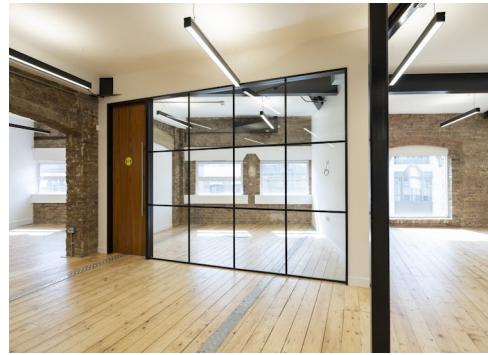
Compton

London

60-62 Commercial Street
E1 6LT

Newly refurbished, partially fitted
office space in converted
warehouse in the heart of
Spitalfields.

For Rent
1,785 ft²



Compton

London

60-62 Commercial Street
E1 6LT

Newly refurbished, partially fitted office space in converted warehouse in the heart of Spitalfields.

For Rent

1,785 ft²

Amenities

- Superb natural daylight
- Modern suspended linear lighting
- Original Wooden flooring
- Air Conditioning
- Self contained WC's
- Passenger Lift
- 24-hour access
- Nearest tube stations: Liverpool Street, Shoreditch High Street and Algate East

Description

Availability of the 1st and 3rd Floors of this converted warehouse office building moments from Spitalfields Market. Its exposed brickwork and steel columns give the space a warehouse feel typical of office spaces in the heart of Shoreditch. Amenities include passenger lifts, self contained WC's, and unmatched views overlooking the City which allow for superb natural light to flow into the space.

Compton

London

60-62 Commercial Street
E1 6LT

Newly refurbished, partially fitted office space in converted warehouse in the heart of Spitalfields.

For Rent

1,785 ft²

Content

[View on Website](#)



Compton

London

60-62 Commercial Street
E1 6LT

Newly refurbished, partially fitted office space in converted warehouse in the heart of Spitalfields.

For Rent

1,785 ft²

Floor Areas & Outgoings

The accommodation comprises of the following

Name	sq ft	Rent (sq ft)	Rates Payable (sq ft)	Service Charge (sq ft)	Total /sq ft	Total month	Total year	Availability
4th	1,433	£57.50	£13.35	£4.60	£75.45	£9,009.99	£108,119.85	Let
3rd	1,772	£49.50	£17.05	£6.20	£72.75	£10,742.75	£128,913	Let
1st	1,785	£49.50	£15.92	£6.20	£71.62	£10,653.48	£127,841.70	Under Offer
Total	4,990	£52.17	£15.44	£5.67	£73.27	£30,406.22	£364,874.55	

Compton

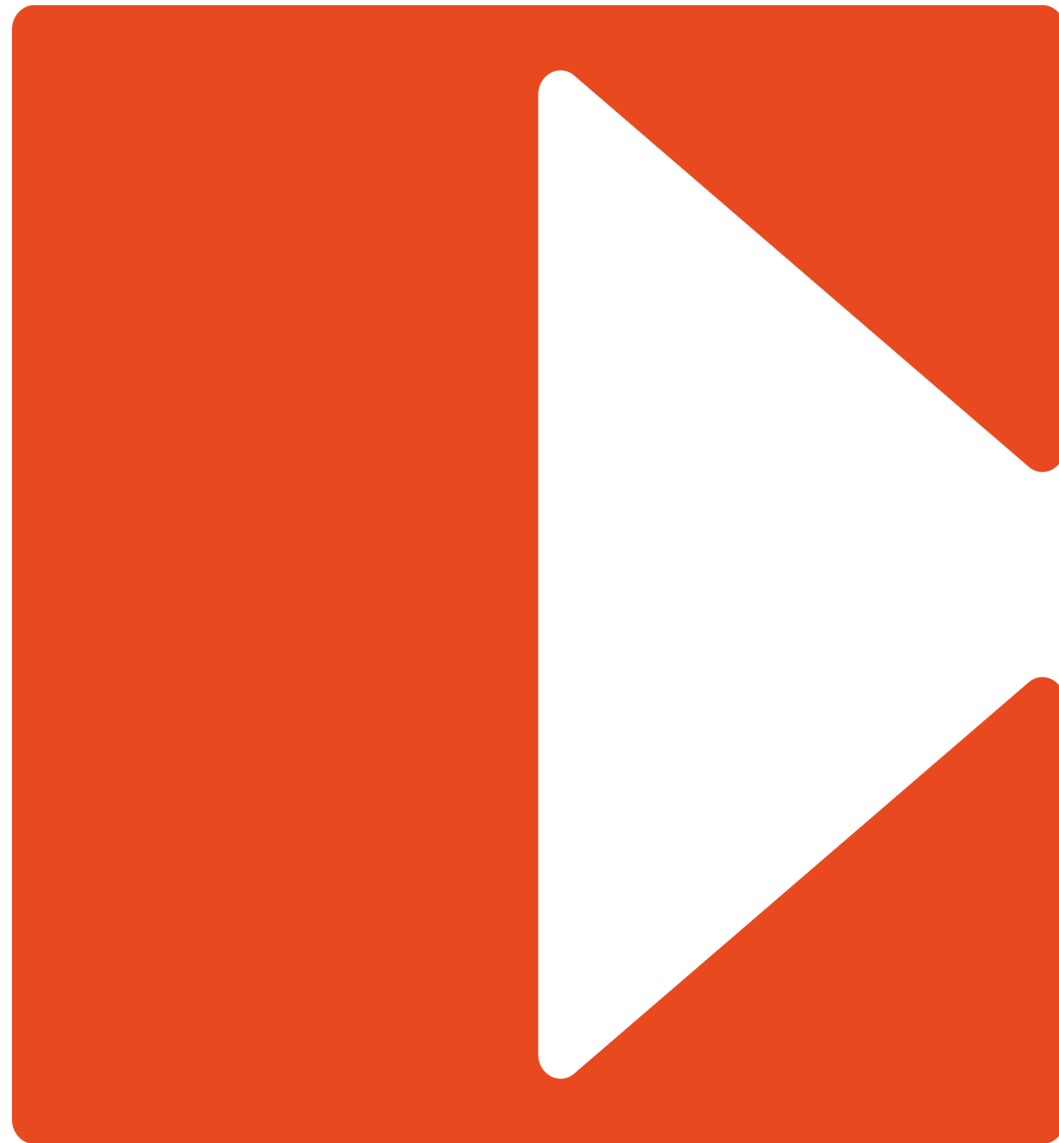
Contact Us

All appointments to view must be arranged via sole agents, Compton, through —

Sonia Oberoi
so@compton.london
+44 (0) 7483 882 598

Elliott Stern
es@compton.london
07834 918700

Jake Kinsler
jk@compton.london
07840 638668



020 7101 2020
compton.london

Compton gives notice that these particulars are set out as a general outline only for the guidance of intending Purchasers or Lessees and do not constitute any part of an offer or contract. Details are given without any responsibility and any intending Purchasers, Lessees or Third Party should not rely on them as statements or representations of fact, but must satisfy themselves by inspection or otherwise as to the correctness of each of them. No person employed or engaged by Compton has any authority to make any representation or warranty whatsoever in relation to this property. Compton is the licensed trading name of Compton RE Disposals Limited. Company registered in England & Wales no. Registered office: 47 St John's Square, Clerkenwell, London, EC1V 4JJ
Generated on 05/08/2024