

Compton

Bloomsbury

Emerald Street Estate
Emerald Street
WC1N 3QA

Refurbished self-contained offices
both fitted and open plan for rent
on flexible lease terms in the heart
of Bloomsbury.

For Rent

795 to 2,463 ft²

020 7101 2020
compton.london



Compton

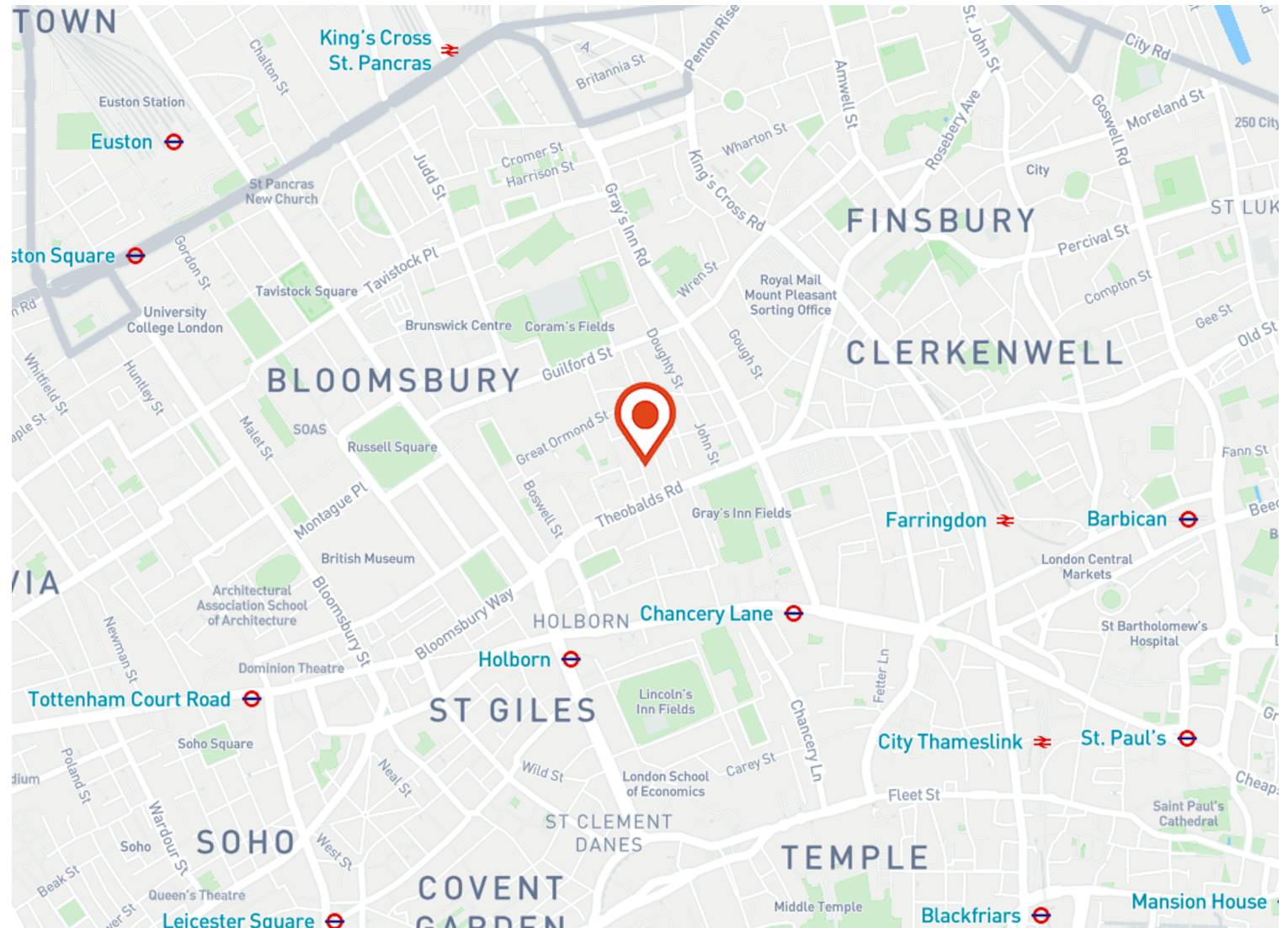
Bloomsbury

Emerald Street Estate
Emerald Street
WC1N 3QA

Refurbished self-contained offices
both fitted and open plan for rent
on flexible lease terms in the heart
of Bloomsbury.

For Rent

795 to 2,463 ft²



Location

The immediate surrounds make this location highly sought after with Red Lion Square and Lambs Conduit Street, both offering a large selection of bars, restaurants & retail within close proximity to the estate.

Compton

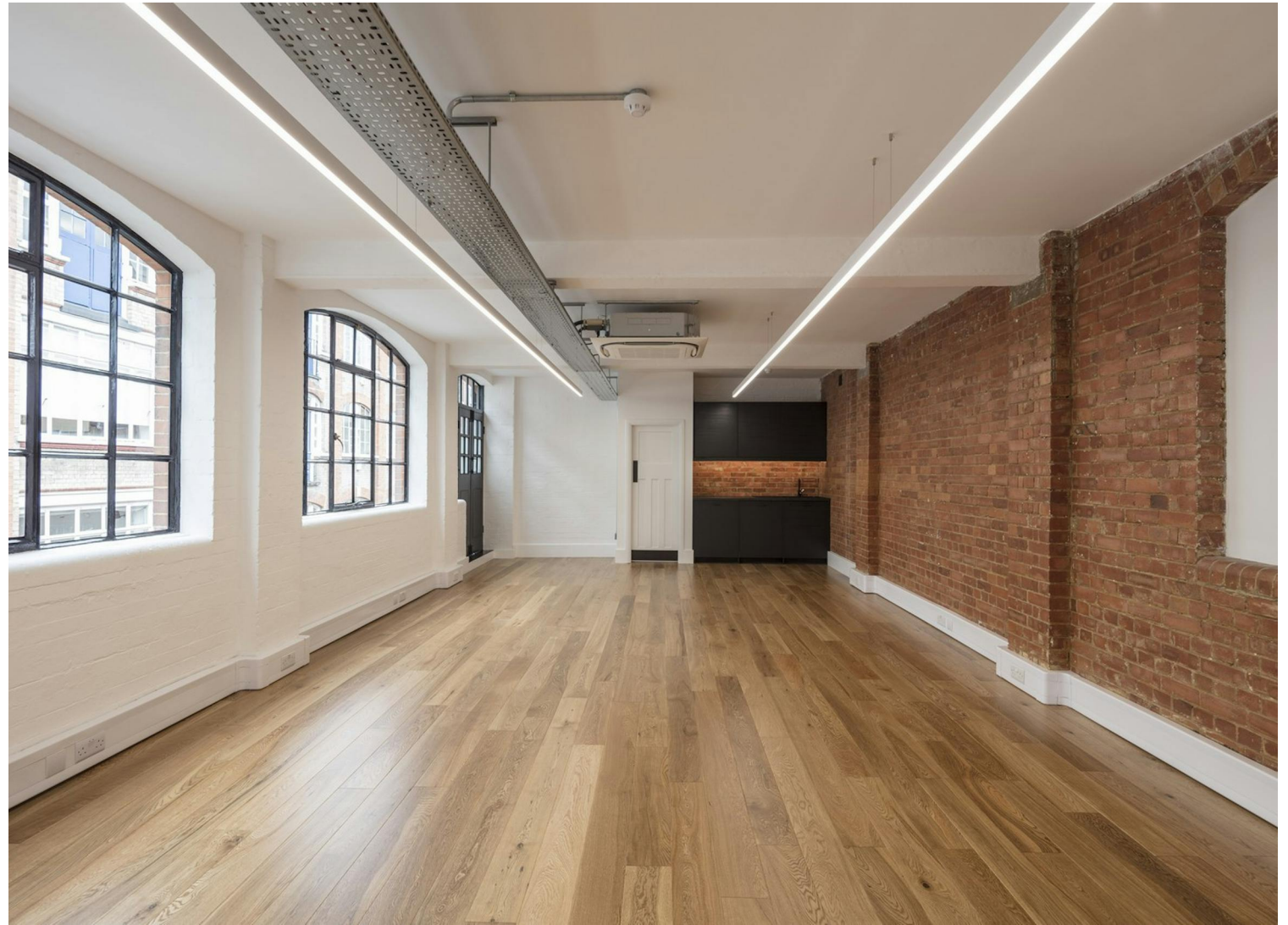
Bloomsbury

Emerald Street Estate
Emerald Street
WC1N 3QA

Refurbished self-contained offices
both fitted and open plan for rent
on flexible lease terms in the heart
of Bloomsbury.

For Rent

795 to 2,463 ft²



Compton

Bloomsbury

Emerald Street Estate
Emerald Street
WC1N 3QA

Refurbished self-contained offices
both fitted and open plan for rent
on flexible lease terms in the heart
of Bloomsbury.

For Rent

795 to 2,463 ft²



Compton

Bloomsbury

Emerald Street Estate
Emerald Street
WC1N 3QA

Refurbished self-contained offices
both fitted and open plan for rent
on flexible lease terms in the heart
of Bloomsbury.

For Rent

795 to 2,463 ft²



Compton

Bloomsbury

Emerald Street Estate
Emerald Street
WC1N 3QA

Refurbished self-contained offices
both fitted and open plan for rent
on flexible lease terms in the heart
of Bloomsbury.

For Rent

795 to 2,463 ft²



Compton

Bloomsbury

Emerald Street Estate
Emerald Street
WC1N 3QA

Refurbished self-contained offices both fitted and open plan for rent on flexible lease terms in the heart of Bloomsbury.

For Rent

795 to 2,463 ft²

Amenities

- Newly refurbished former warehouse offices available for rent
- Offices can be delivered open plan or fully fitted
- Flexible lease terms
- Original wooden flooring throughout with exposed brickwork feature walls
- Fantastic natural daylight
- Air conditioning
- Perimeter trunking
- On-site Porter
- Self-contained WCs
- Dedicated fibre line

Description

The Emerald Street Estate, situated in the heart of Bloomsbury, comprises of 7 charming warehouse conversions. Formerly used by the Victorian industrial industry, the estate has now been converted to studio & office accommodation and houses over 18 different companies, mainly in the creative sectors.

Bloomsbury

Emerald Street Estate
Emerald Street
WC1N 3QA

Refurbished self-contained offices both fitted and open plan for rent on flexible lease terms in the heart of Bloomsbury.

For Rent

795 to 2,463 ft²

Content

Watch the film



View on Website



Lease Term

New full repairing & insuring lease available for a term by arrangement direct from the Landlord

VAT

The property is elected for VAT

Legal Costs

Each party to be responsible for its own legal and all other professional costs incurred in the transaction

Local Authority

The London Borough of Camden

Bloomsbury

Emerald Street Estate
Emerald Street
WC1N 3QA

Refurbished self-contained offices both fitted and open plan for rent on flexible lease terms in the heart of Bloomsbury.

For Rent

795 to 2,463 ft²

Floor Areas & Outgoings

The accommodation comprises of the following:

Name	sq ft	Rent	Rates Payable	Service charge	Total month	Total year	Availability
3rd - Building 17-21 (Fully Fitted)	795	£47 /sq ft	£15.68 /sq ft	£3.05 /sq ft	£4,354.61	£52,255.35	Available
3rd - Building 11-15	1,941	£55 /sq ft Guiding	£20 /sq ft	£8 /sq ft	£13,425.25	£161,103	Let
3rd - South, Building 17-21 (Fully Fitted)	1,036	£47 /sq ft	£15.65 /sq ft	On Application	£5,408.78	£64,905.40	Available
2nd - Building 11-15	1,668	P.O.A	£20 /sq ft	£8 /sq ft	£3,892	£46,704	Available
1st - 14-18	862	£52 /sq ft Guiding	£18.18 /sq ft	£5.33 /sq ft	£5,424.14	£65,089.62	Under Offer

Compton

Contact Us

All appointments to view must be arranged via sole agents, Compton, through —

Sarah Hill
sh@compton.london
07936 338 774

Elliott Stern
es@compton.london
07834 918700

Dylan Kessel
dk@compton.london
07734374594



020 7101 2020
compton.london

Compton gives notice that these particulars are set out as a general outline only for the guidance of intending Purchasers or Lessees and do not constitute any part of an offer or contract. Details are given without any responsibility and any intending Purchasers, Lessees or Third Party should not rely on them as statements or representations of fact, but must satisfy themselves by inspection or otherwise as to the correctness of each of them. No person employed or engaged by Compton has any authority to make any representation or warranty whatsoever in relation to this property. Compton is the licensed trading name of Compton RE Disposals Limited. Company registered in England & Wales no. Registered office: 47 St John's Square, Clerkenwell, London, EC1V 4JJ
Generated on 10/01/2026