

Compton



Camden

24-28 Oval Road
NW1 7DJ

31,000 sq ft of newly refurbished
space available within a grade II
listed icon in the heart of Camden

For Rent

6,181 to 31,348 ft²

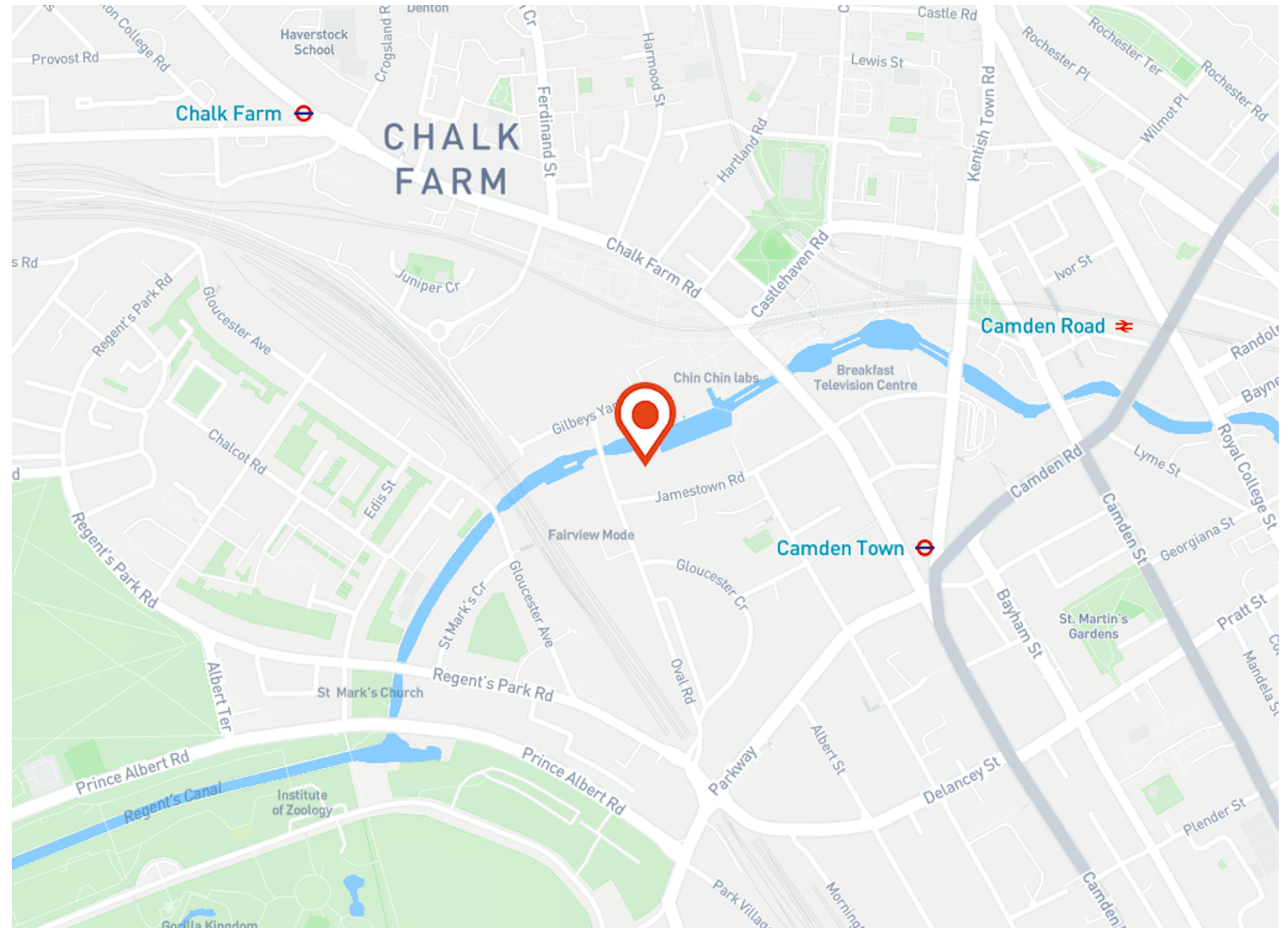
020 7101 2020
compton.london

Compton

Camden
24-28 Oval Road
NW1 7DJ

31,000 sq ft of newly refurbished space available within a grade II listed icon in the heart of Camden

For Rent
6,181 to 31,348 ft²



Location

The building is located on the corner of Oval Road and Jamestown Road directly above Regent's Canal. Camden Lock is located moments away and benefits from the eclectic mix of eateries, bars and shops that makes Camden such an exciting place to be.

Compton

Camden

24-28 Oval Road
NW1 7DJ

31,000 sq ft of newly refurbished
space available within a grade II
listed icon in the heart of Camden

For Rent

6,181 to 31,348 ft²



020 7101 2020
compton.london

Exterior

Compton

Camden

24-28 Oval Road
NW1 7DJ

31,000 sq ft of newly refurbished
space available within a grade II
listed icon in the heart of Camden

For Rent

6,181 to 31,348 ft²

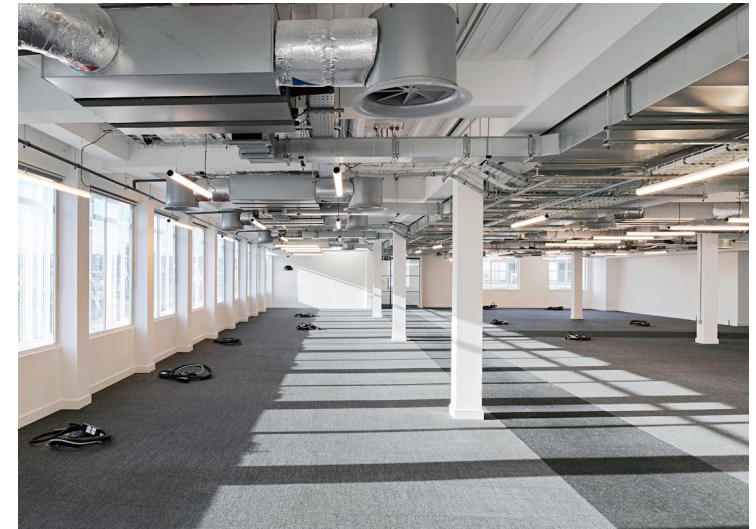
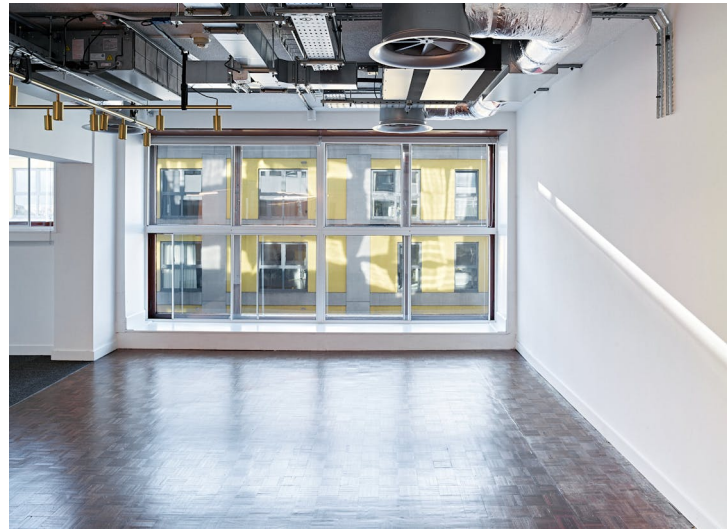


Compton

Camden
24-28 Oval Road
NW1 7DJ

31,000 sq ft of newly refurbished space available within a grade II listed icon in the heart of Camden

For Rent
6,181 to 31,348 ft²

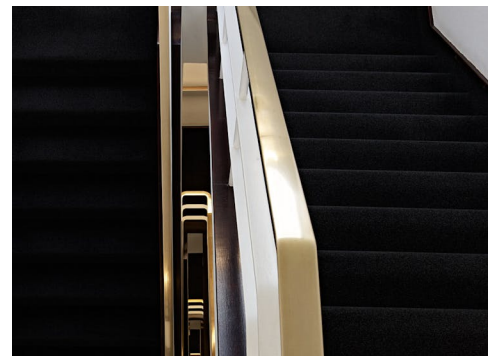
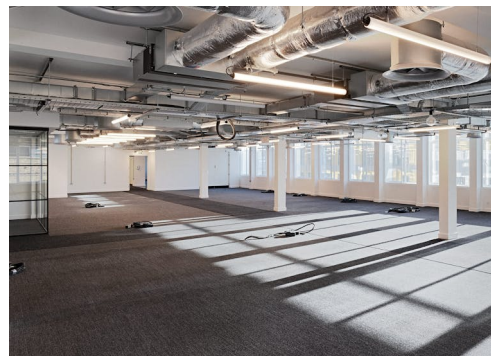
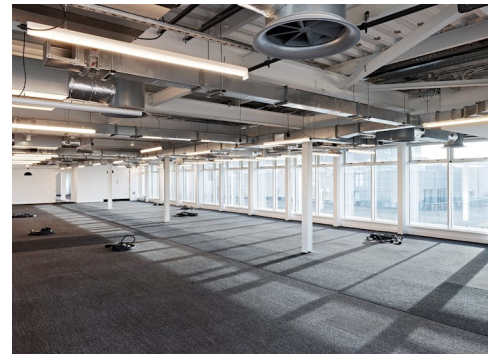
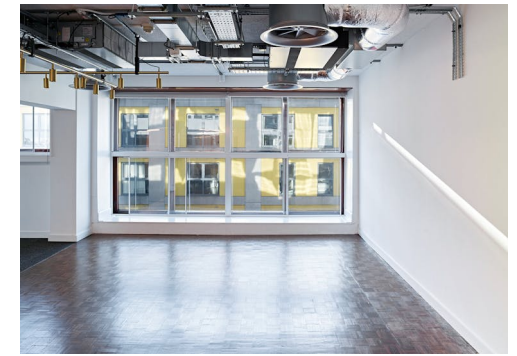
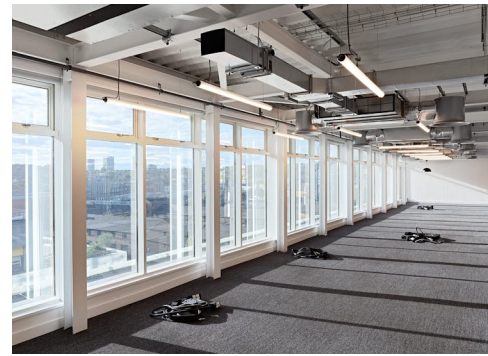
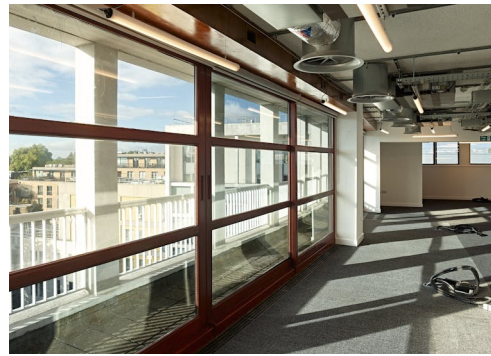


Compton

Camden
24-28 Oval Road
NW1 7DJ

31,000 sq ft of newly refurbished
space available within a grade II
listed icon in the heart of Camden

For Rent
6,181 to 31,348 ft²



Compton

Camden

24-28 Oval Road
NW1 7DJ

31,000 sq ft of newly refurbished space available within a grade II listed icon in the heart of Camden

For Rent

6,181 to 31,348 ft²

Amenities

- Iconic art deco building in the heart of Camden
- Exposed air conditioning
- Lower Ground floor recording studios
- 8 floors of stunning offices
- Excellent views
- Canal side location
- 6th floor outdoor loggia
- Art deco staircase
- Car Parking
- Cycle storage and shower facilities

Description

24–28 Oval Road began life as a bottle warehouse for world famous wine and whiskey merchant W & A GILBEY. In 1934 the pub that once stood on this site was replaced with GILBEY HOUSE, a modernist masterpiece by renowned architect Serge Chermeyeff. Today the building comprises 49,900 sq ft of thoughtfully refurbished office space across 8 floors. The lower ground floor space comprises an extensive suite of recording studios.

Compton

Camden

24-28 Oval Road
NW1 7DJ

31,000 sq ft of newly refurbished space available within a grade II listed icon in the heart of Camden

For Rent

6,181 to 31,348 ft²

Content

View on Website



Viewings

Via joint sole agents only.

Terms

New full repairing & insuring lease available directly from the Landlord for a term by arrangement.

VAT

The property is elected for VAT.

Local Authority

The London Borough of Camden

Compton

Camden

24-28 Oval Road
NW1 7DJ

31,000 sq ft of newly refurbished space available within a grade II listed icon in the heart of Camden

For Rent

6,181 to 31,348 ft²

Floor Areas & Outgoings

The accommodation comprises the following areas:

Name	sq ft	Rent (sq ft)	Rates Payable (sq ft)	Service Charge (sq ft)	Total month	Total year	Availability
6th	5,952	£49.50	£15.98	£8.50	£36,694.08	£440,328.96	Let
5th	6,314	£37.50	£15.98	£8.50	£32,611.81	£391,341.72	Available
4th	6,260	£37.50	£15.98	£8.50	£32,332.90	£387,994.80	Available
3rd	6,256	£25	£15.98	£8.50	£25,795.57	£309,546.88	Available
2nd	6,181	£25	£15.98	£8.50	£25,486.32	£305,835.88	Available
1st	6,337	£25	£15.98	£8.50	£26,129.56	£313,554.76	Available
Ground	5,453	£37.50	£15.98	£8.50	£28,164.75	£337,976.94	Under Offer
Lower Ground - Recording Studios	7,263	£37.50	£15.98	£8.50	£37,513.40	£450,160.74	Under Offer
Total	50,016	£34.31	£15.98	£8.50	£244,728.39	£2,936,740.68	

Compton

Contact Us

All appointments to view must be arranged via sole agents, Compton, through —

Josh Perlmutter
jp@compton.london
07814 699 096

Shaun Simons
ss@compton.london
07788 423131

Emma Higgins
eh@compton.london
07769 605 295

