

Compton

Hoxton

Unit 7 Wharf Studios
18-42 Wharf Road
N1 7GP

"Plug & Play" self-contained ground
floor industrial style office unit for
rent on flexible lease terms

For Rent
1,800 ft²

020 7101 2020
compton.london



Compton

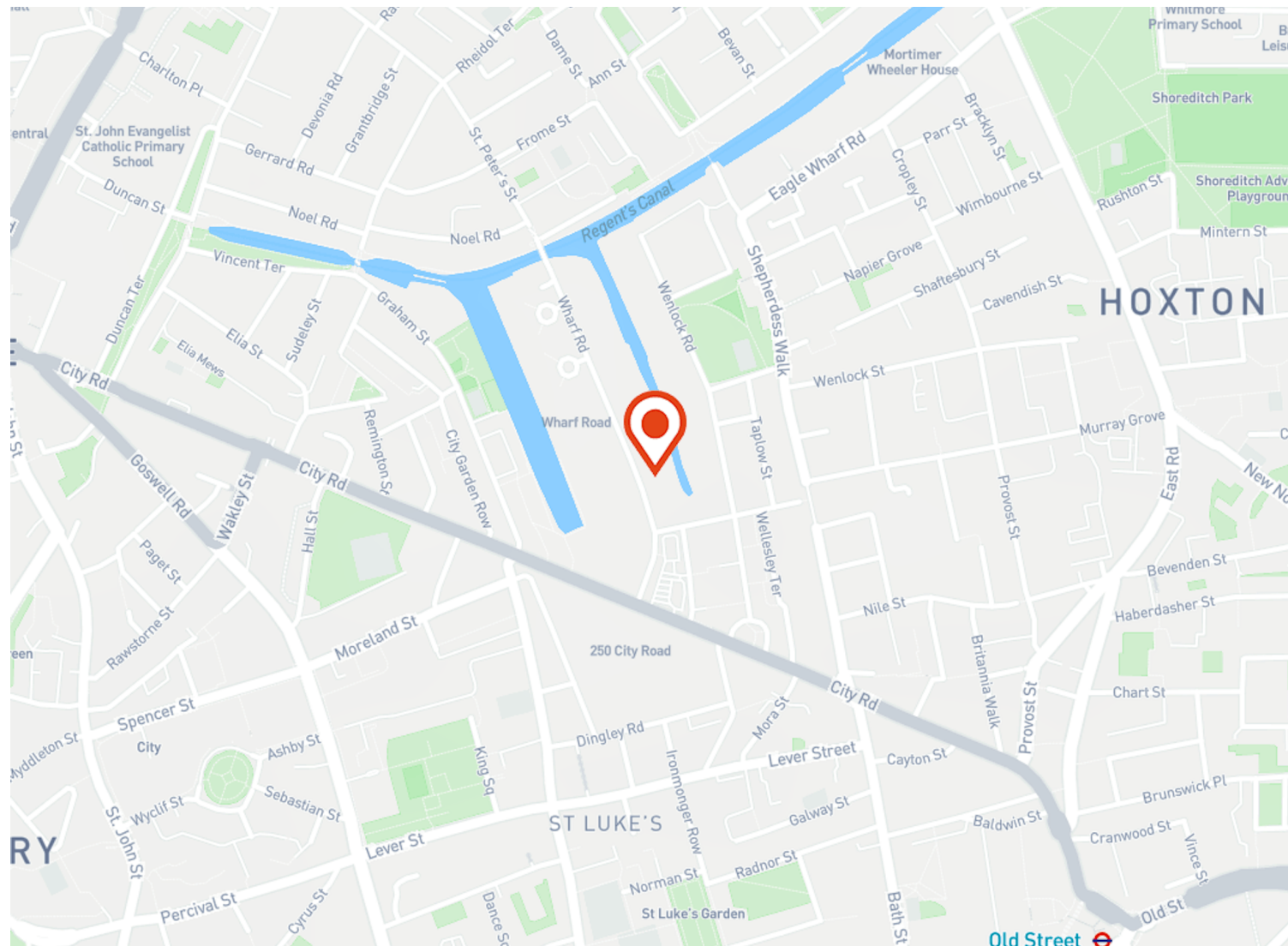
Hoxton

Unit 7 Wharf Studios
18-42 Wharf Road
N1 7GP

"Plug & Play" self-contained ground floor industrial style office unit for rent on flexible lease terms

For Rent

1,800 ft²



Location

Wharf Road is a turning off City Road between The Angel, Islington and Old Street. The immediate surrounding area is predominantly residential with attractive blocks having been built along the City Road and surrounding the City Road Canal Basin. All the amenities of Upper Street are approximately 10 minutes walk away.

Compton

Hoxton

Unit 7 Wharf Studios
18-42 Wharf Road
N1 7GP

"Plug & Play" self-contained ground
floor industrial style office unit for
rent on flexible lease terms

For Rent

1,800 ft²

020 7101 2020
compton.london



Building Exterior

Compton

Hoxton

Unit 7 Wharf Studios
18-42 Wharf Road
N1 7GP

"Plug & Play" self-contained ground
floor industrial style office unit for
rent on flexible lease terms

For Rent

1,800 ft²



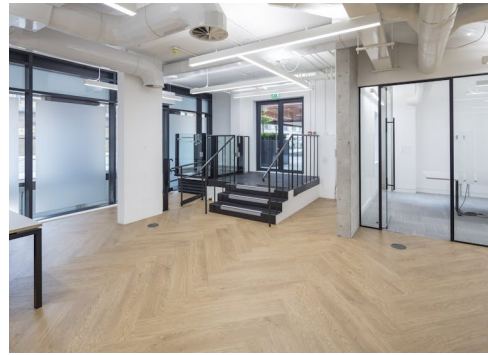
Compton

Hoxton

Unit 7 Wharf Studios
18-42 Wharf Road
N1 7GP

"Plug & Play" self-contained ground floor industrial style office unit for rent on flexible lease terms

For Rent
1,800 ft²



Compton

Hoxton

Unit 7 Wharf Studios
18-42 Wharf Road
N1 7GP

"Plug & Play" self-contained ground floor industrial style office unit for rent on flexible lease terms

For Rent

1,800 ft²

Amenities

- "Plug & Play" office floor available for rent
- Fully fitted office floor with cabling, meeting room and kitchenette in situ
- Self-contained
- Air-conditioning
- Shower facilities
- Modern suspended lighting
- Male & Female WC's
- Cycle Storage
- Entry phone system
- Generous floor to ceiling height
- 24-hour access
- Flexible lease terms available

Description

"Plug & Play" self-contained ground floor industrial style office unit for rent on flexible lease terms

Hoxton

Unit 7 Wharf Studios
18-42 Wharf Road
N1 7GP

"Plug & Play" self-contained ground floor industrial style office unit for rent on flexible lease terms

For Rent

1,800 ft²

Content

[View on Website](#)



Tenure

Leasehold

Lease Term

New full repairing & insuring lease available for a term by arrangement direct from the Landlord

VAT

The property is elected for VAT

Legal Costs

Each party to be responsible for its own legal and all other professional costs incurred in the transaction

Local Authority

The London Borough of Islington

Compton

Hoxton

Unit 7 Wharf Studios
18-42 Wharf Road
N1 7GP

"Plug & Play" self-contained ground floor industrial style office unit for rent on flexible lease terms

For Rent

1,800 ft²

Floor Areas & Outgoings

The accommodation comprises of the following:

Name	sq ft	Rent	Rates Payable	Service charge	Total month	Total year	Availability
Ground - Fully-fitted	1,800	£42.50 /sq ft	£18 /sq ft	£1.50 /sq ft	£9,300	£111,600	Available
Total	1,800				£9,300	£111,600	

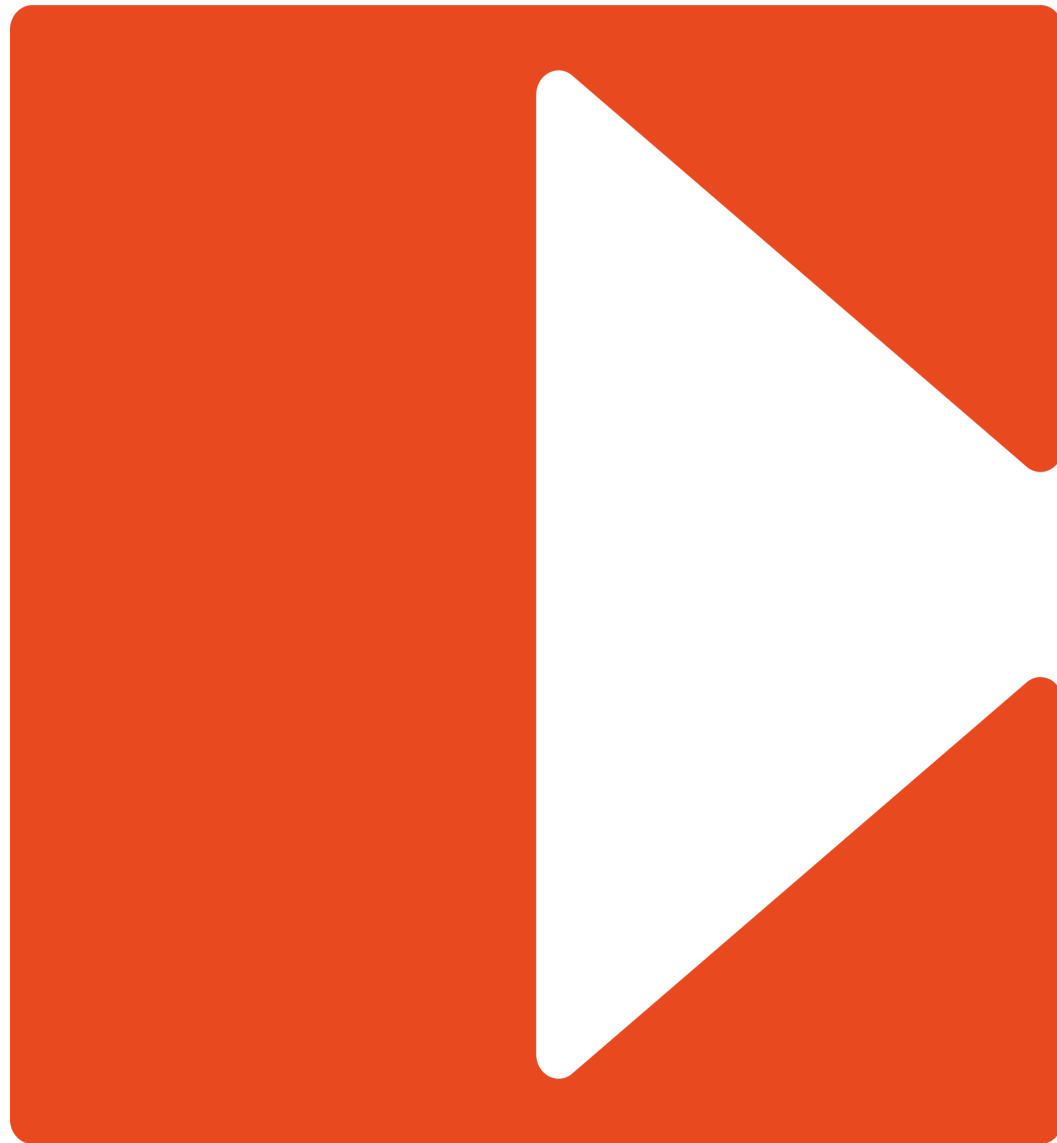
Compton

Contact Us

All appointments to view must be arranged via sole agents, Compton, through —

Elliott Stern
es@compton.london
07834 918700

Sonia Oberoi
so@compton.london
+44 (0) 7483 882 598



020 7101 2020
compton.london

Compton gives notice that these particulars are set out as a general outline only for the guidance of intending Purchasers or Lessees and do not constitute any part of an offer or contract. Details are given without any responsibility and any intending Purchasers, Lessees or Third Party should not rely on them as statements or representations of fact, but must satisfy themselves by inspection or otherwise as to the correctness of each of them. No person employed or engaged by Compton has any authority to make any representation or warranty whatsoever in relation to this property. Compton is the licensed trading name of Compton RE Disposals Limited. Company registered in England & Wales no. Registered office: 47 St John's Square, Clerkenwell, London, EC1V 4JJ
Generated on 03/03/2025