

# Compton

---

## Shoreditch

Wilson's Corner  
23 Wilson Street  
EC2M 2TE

---

Best in Class Refurbished Building  
Available For Rent Adjacent to  
Broadgate - in Close Proximity to  
Liverpool Street, Moorgate & Old  
Street

---

**For Rent**  
1,739 ft<sup>2</sup>

020 7101 2020  
[compton.london](http://compton.london)

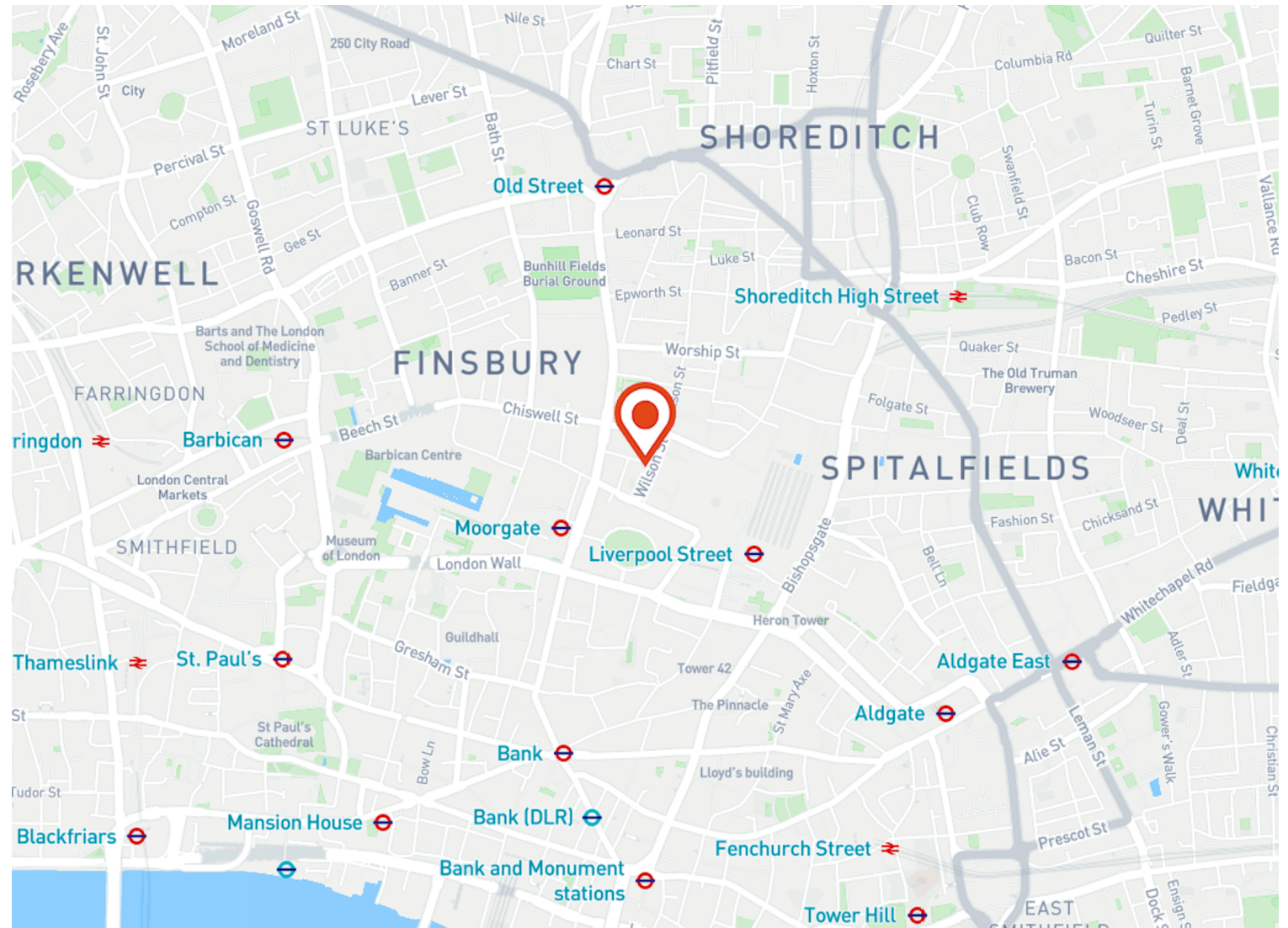
# Compton

## Shoreditch

Wilson's Corner  
23 Wilson Street  
EC2M 2TE

Best in Class Refurbished Building  
Available For Rent Adjacent to  
Broadgate - in Close Proximity to  
Liverpool Street, Moorgate & Old  
Street

**For Rent**  
1,739 ft<sup>2</sup>



# Compton

---

## Shoreditch

Wilson's Corner  
23 Wilson Street  
EC2M 2TE

---

Best in Class Refurbished Building  
Available For Rent Adjacent to  
Broadgate - in Close Proximity to  
Liverpool Street, Moorgate & Old  
Street

---

**For Rent**  
1,739 ft<sup>2</sup>



# Compton

---

## Shoreditch

Wilson's Corner  
23 Wilson Street  
EC2M 2TE

---

Best in Class Refurbished Building  
Available For Rent Adjacent to  
Broadgate - in Close Proximity to  
Liverpool Street, Moorgate & Old  
Street

---

**For Rent**  
1,739 ft<sup>2</sup>



# Compton

---

## Shoreditch

Wilson's Corner  
23 Wilson Street  
EC2M 2TE

---

Best in Class Refurbished Building  
Available For Rent Adjacent to  
Broadgate - in Close Proximity to  
Liverpool Street, Moorgate & Old  
Street

---

**For Rent**  
1,739 ft<sup>2</sup>



# Compton

---

## Shoreditch

Wilson's Corner  
23 Wilson Street  
EC2M 2TE

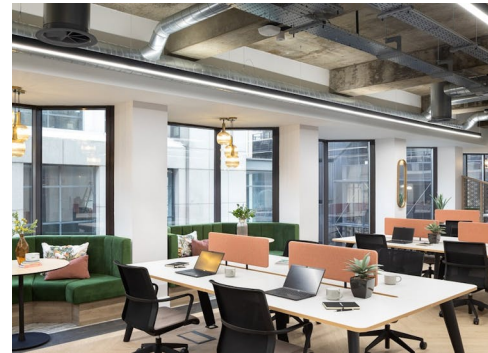
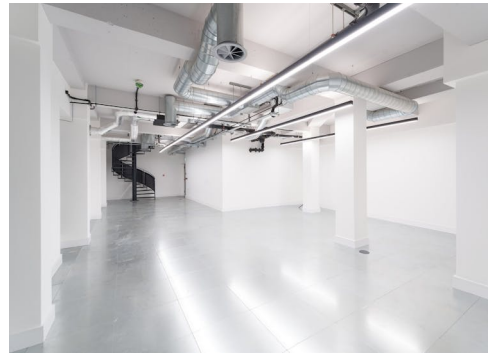
---

Best in Class Refurbished Building  
Available For Rent Adjacent to  
Broadgate - in Close Proximity to  
Liverpool Street, Moorgate & Old  
Street

---

**For Rent**  
1,739 ft<sup>2</sup>

---



---

## Shoreditch

Wilson's Corner  
23 Wilson Street  
EC2M 2TE

---

Best in Class Refurbished Building  
Available For Rent Adjacent to  
Broadgate - in Close Proximity to  
Liverpool Street, Moorgate & Old  
Street

---

## For Rent

1,739 ft<sup>2</sup>

---

## Amenities

- Refurbished Building
- Branding Opportunity
- Exposed concrete ceilings
- Superb natural daylight
- Generous floor to ceiling height
- Brand new air conditioning
- Raised floors
- LED Lighting
- Branding Opportunity

---

## Description

A unique opportunity to acquire this brand newly refurbished self-contained building located in close proximity to The City & Shoreditch.

The building is arranged over a self-contained G&LG and 6 upper floors and is being fully refurbished to provide exposed concrete ceilings, fully accessible raised access flooring, modern suspended LED lighting & air-conditioning.

Occupying a prominent corner position at the junction of Wilson Street & Lackington Street, the property benefits from two elevations of floor to ceiling windows providing an abundance of natural daylight.

The floors have very generous floor to ceiling heights throughout and the building boasts a large roof terrace on level 7.

# Compton

---

## Shoreditch

Wilson's Corner  
23 Wilson Street  
EC2M 2TE

---

Best in Class Refurbished Building  
Available For Rent Adjacent to  
Broadgate - in Close Proximity to  
Liverpool Street, Moorgate & Old  
Street

---

## For Rent

1,739 ft<sup>2</sup>

---

## Content

Watch the film



View on Website





# Compton

---

## Shoreditch

Wilson's Corner  
23 Wilson Street  
EC2M 2TE

---

Best in Class Refurbished Building  
Available For Rent Adjacent to  
Broadgate - in Close Proximity to  
Liverpool Street, Moorgate & Old  
Street

---

**For Rent**  
1,739 ft<sup>2</sup>

---

## Floor Areas & Outgoings

---

The accommodation comprises of the following

Floor/Unit	Description	sq ft	Rent (sq ft)	Rates Payable	Service charge	Total month	Total year	Availability
4th	Fully-Fitted	2,113	£79.50	£22 /sq ft	£14.89 /sq ft	£20,494.34	£245,932.07	Under Offer
Ground	-	828	£62.50	On Application	£14.89 /sq ft	£5,339.91	£64,078.92	Available
Lower Ground	-	911	£37.50	On Application	£14.89 /sq ft	£3,977.27	£47,727.29	Available

# Compton

---

## Contact Us

All appointments to view must be arranged via sole agents, Compton, through —

Sonia Oberoi  
[so@compton.london](mailto:so@compton.london)  
+44 (0) 7483 882 598

Andy Gilbert  
[ag@compton.london](mailto:ag@compton.london)  
07833993714

Samantha-Jo Roberts  
[sr@compton.london](mailto:sr@compton.london)  
07704343032

Shaun Simons  
[ss@compton.london](mailto:ss@compton.london)  
07788 423131

