

Compton

Bloomsbury
21 Bedford Square
WC1B 3HH

Stunning self-contained period
townhouse with outdoor space
available for rent

For Rent
5,045 ft²

020 7101 2020
compton.london



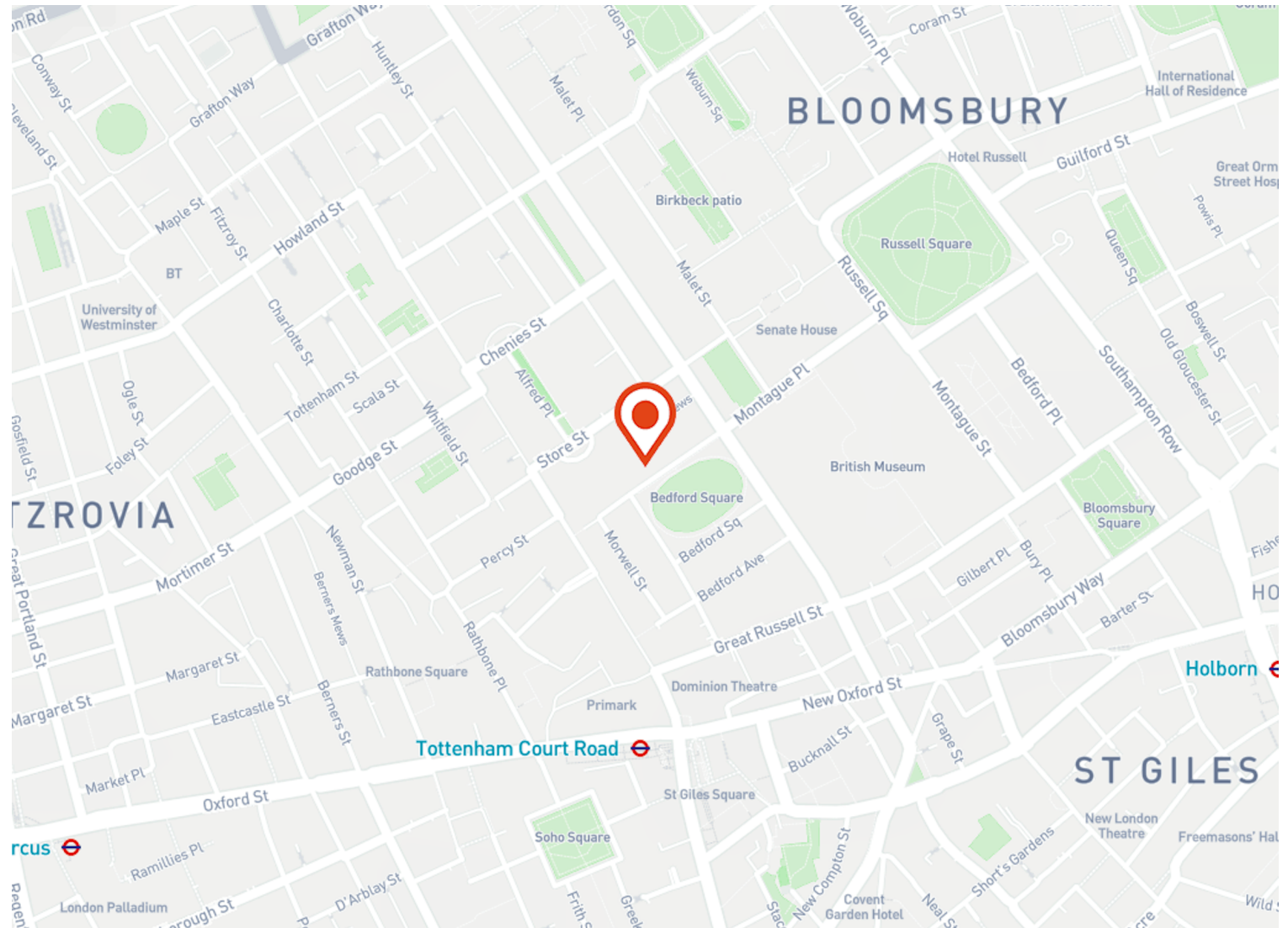
Compton

Bloomsbury

21 Bedford Square
WC1B 3HH

Stunning self-contained period townhouse with outdoor space available for rent

For Rent
5,045 ft²



Location

21 Bedford Square is situated in Bloomsbury, London's fashionable, cultural and intellectual heart and is surrounded by coffee shops, bars, restaurants and numerous retailers.

The property is also a short walk from several main line stations, namely; Tottenham Court Road, Russell Square, Gode Street and Holborn. The Elizabeth Line will revolutionise journey times travelling from East to West and within Central London through Tottenham Court Road.

Compton

Bloomsbury
21 Bedford Square
WC1B 3HH

Stunning self-contained period townhouse with outdoor space available for rent

For Rent
5,045 ft²



Compton

Bloomsbury

21 Bedford Square
WC1B 3HH

Stunning self-contained period
townhouse with outdoor space
available for rent

For Rent
5,045 ft²

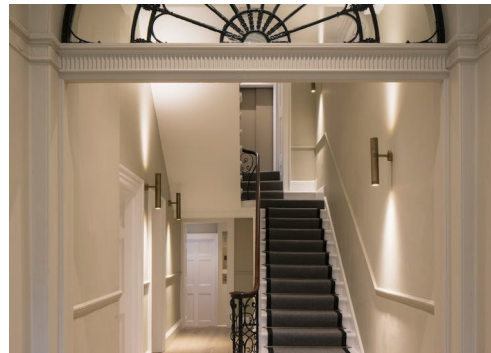


Compton

Bloomsbury
21 Bedford Square
WC1B 3HH

Stunning self-contained period townhouse with outdoor space available for rent

For Rent
5,045 ft²



Bloomsbury

21 Bedford Square
WC1B 3HH

Stunning self-contained period townhouse with outdoor space available for rent

For Rent

5,045 ft²

Amenities

- Self-contained building
- Newly refurbished
- Private terrace

Description

Located on Bedford Square in the heart of Bloomsbury village, 21 Bedford Square has been sympathetically renovated to retain its period features to an exceptional standard throughout, providing stunning premium modern office space.

The property has an appealing configuration; there is a generous hallway, central staircase, and well-proportioned, well-kept rooms throughout. Additionally, there is a separate self contained building to the rear of the building accessible via the private terrace.

Additionally ingoing Tenants will benefit from access to the private Bedford Square Gardens (upon arrangement).

Bloomsbury

21 Bedford Square
WC1B 3HH

Stunning self-contained period
townhouse with outdoor space
available for rent

For Rent

5,045 ft²

Content

View on Website



Landlord

The Bedford Estates

Lease Term

New full repairing & insuring lease (on the Estates standard terms)
available for a term by arrangement

Possession

Q2 2023

VAT

The property is elected for VAT

Local Authority

The London Borough of Camden

Compton

Bloomsbury

21 Bedford Square
WC1B 3HH

Stunning self-contained period townhouse with outdoor space available for rent

For Rent

5,045 ft²

Floor Areas & Outgoings

The accommodation comprises of the following:

Name	sq ft	Rent (sq ft)	Rates Payable (sq ft)	Service Charge (sq ft)	Total month	Total year	Availability
Building	5,045	£75	£20	n/a	£39,939.58	£479,275	Available

Compton

Contact Us

All appointments to view must be arranged via sole agents, Compton, through —

Joshua Miller
jm@compton.london
07917 725 365

Shaun Simons
ss@compton.london
07788 423131

Josh Perlmutter
jp@compton.london
07814 699 096



020 7101 2020
compton.london

Compton gives notice that these particulars are set out as a general outline only for the guidance of intending Purchasers or Lessees and do not constitute any part of an offer or contract. Details are given without any responsibility and any intending Purchasers, Lessees or Third Party should not rely on them as statements or representations of fact, but must satisfy themselves by inspection or otherwise as to the correctness of each of them. No person employed or engaged by Compton has any authority to make any representation or warranty whatsoever in relation to this property. Compton is the licensed trading name of Compton RE Disposals Limited. Company registered in England & Wales no. Registered office: 47 St John's Square, Clerkenwell, London, EC1V 4JJ
Generated on 23/05/2024