

LANCASTER  
SAMMS

41 Grosvenor Terrace, York

York

£650,000





An elegant and substantial townhouse, comprehensively refurbished and extended, with great attention to detail and design, offering a superb balance of period features and modern living.

Council Tax band: D

Tenure: Freehold

























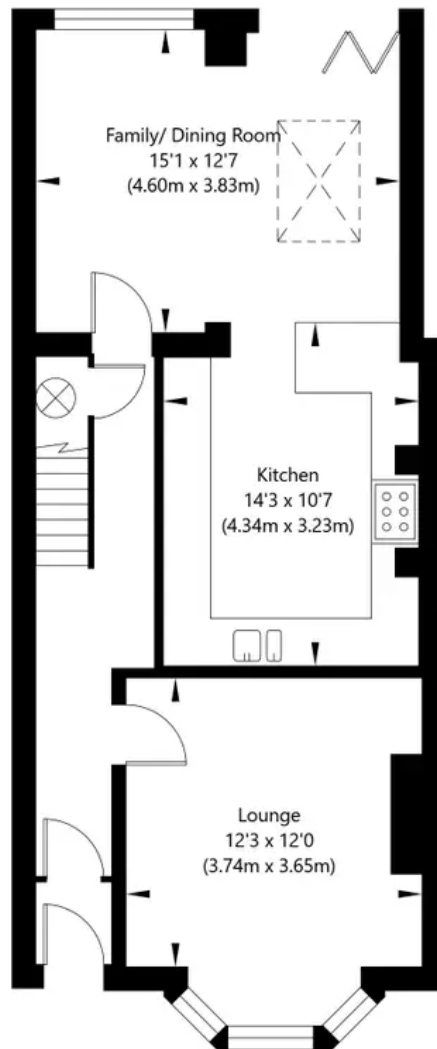




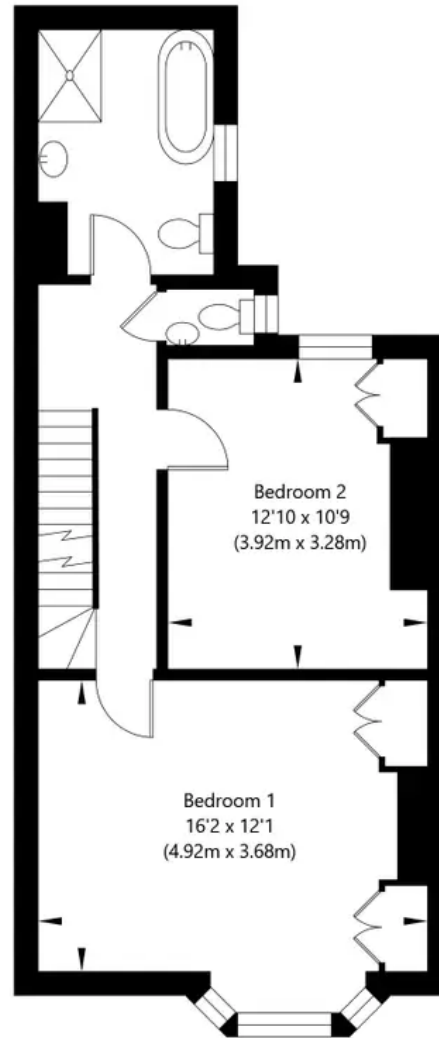




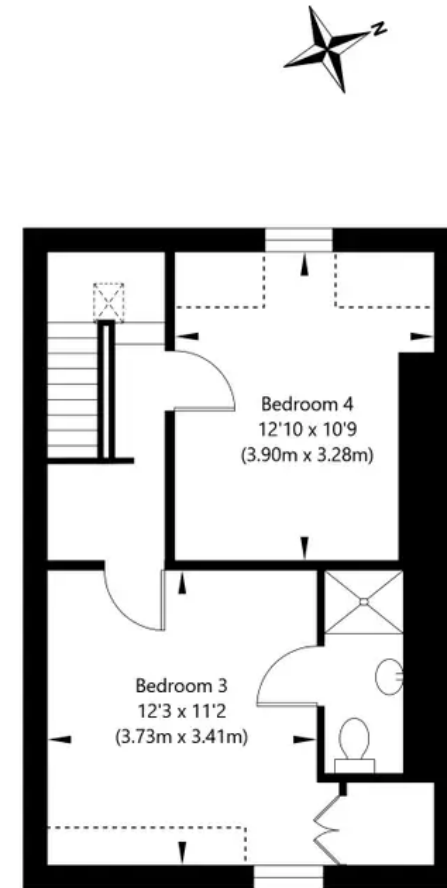
# Grosvenor Terrace, York, YO30 7AG



Ground Floor  
GROSS INTERNAL FLOOR AREA  
APPROX. 621 SQ FT / 57.7 SQ M



First Floor  
GROSS INTERNAL FLOOR AREA  
APPROX. 524 SQ FT / 48.68 SQ M



Second Floor  
GROSS INTERNAL FLOOR AREA  
APPROX. 396 SQ FT / 36.81 SQ M

NOT TO SCALE - FOR ILLUSTRATIVE PURPOSES ONLY

APPROXIMATE GROSS INTERNAL FLOOR AREA 1541 SQ FT / 143.19 SQ M

All Measurements and fixtures including doors and windows are approximate and should be independently verified.

[www.exposurepropertymarketing.com](http://www.exposurepropertymarketing.com) © 2023





## Lancaster Samms

Lancaster Samms, 27 High Petergate - YO1 7HP

01904 500455

[info@lancastersamms.co.uk](mailto:info@lancastersamms.co.uk)

[www.lancastersamms.co.uk/](http://www.lancastersamms.co.uk/)

LANCASTER  
SAMMS