

Compton

Clerkenwell

Parchment House
13 Northburgh Street
EC1V 0JP

Fully-fitted floor available for rent in
the heart of Clerkenwell within a
converted Victorian warehouse

For Rent
2,323 ft²

020 7101 2020
compton.london

Compton

Clerkenwell

Parchment House
13 Northburgh Street
EC1V 0JP

Fully-fitted floor available for rent in the heart of Clerkenwell within a converted Victorian warehouse

For Rent
2,323 ft²



Location

Farringdon boasts exceptional connectivity through its station, one of only four interchanges in London where passengers can access national rail links via Thameslink, London Underground services (Metropolitan, Circle, and Hammersmith & City lines), and the Elizabeth Line.

Having opened in 1863, Farringdon Station claims the title of the oldest underground metro station in the world. More impressively, it is estimated that a quarter of England's population can reach Farringdon within 45 minutes, making it a highly accessible and convenient location for commuters and businesses alike.

Compton

Clerkenwell

Parchment House
13 Northburgh Street
EC1V 0JP

Fully-fitted floor available for rent in the heart of Clerkenwell within a converted Victorian warehouse

For Rent
2,323 ft²



Compton

Clerkenwell

Parchment House
13 Northburgh Street
EC1V 0JP

Fully-fitted floor available for rent in
the heart of Clerkenwell within a
converted Victorian warehouse

For Rent
2,323 ft²



Compton

Clerkenwell
Parchment House
13 Northburgh Street
EC1V 0JP

Fully-fitted floor available for rent in the heart of Clerkenwell within a converted Victorian warehouse

For Rent
2,323 ft²



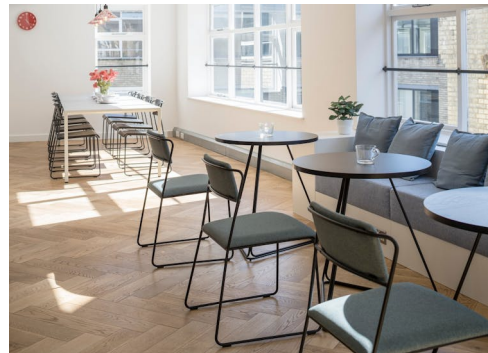
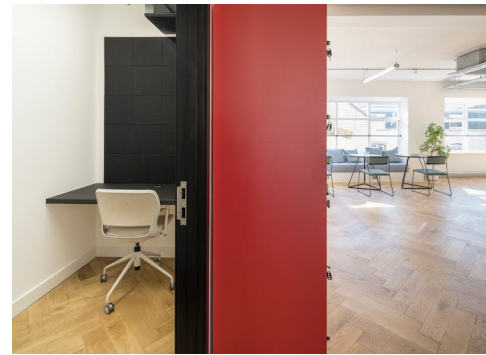
Compton

Clerkenwell

Parchment House
13 Northburgh Street
EC1V 0JP

Fully-fitted floor available for rent in
the heart of Clerkenwell within a
converted Victorian warehouse

For Rent
2,323 ft²



Compton

Clerkenwell

Parchment House
13 Northburgh Street
EC1V 0JP

Fully-fitted floor available for rent in the heart of Clerkenwell within a converted Victorian warehouse

For Rent
2,323 ft²

Amenities

- 4th floor fit-out includes 2 meeting rooms, 18 desks, 1 teapoint, 1 breakout area and 1 zoom room
- Additional quiet working and soft seating zones, with flex space for additional fit-out
- Air-conditioning
- Shower facilities
- 24-hour access

Description

Welcome to Parchment House, where modern workspaces meet convenience and functionality. Available now is a fully fitted office space on the 4th floor, meticulously designed by the Landlord to offer an immediate, ready-to-use workspace.

This exceptional office space features 18 ergonomically designed workstations that boost productivity and comfort, along with 2 meeting rooms ideal for team collaborations and client meetings. A fully equipped teapoint caters to all your refreshment needs, while the breakout area provides a perfect spot for informal gatherings and relaxation.

The space also includes a dedicated Zoom room for virtual meetings, additional quiet working zones for focused individual work, and soft seating zones for casual work or relaxation. Moreover, there is ample flex space available for additional customisation to meet your unique requirements.

Discover a workspace that supports efficiency and flexibility. Parchment House offers the perfect environment for your business to thrive.

Compton

Clerkenwell

Parchment House
13 Northburgh Street
EC1V 0JP

Fully-fitted floor available for rent in the heart of Clerkenwell within a converted Victorian warehouse

For Rent

2,323 ft²

Content

Watch the film



View on Website



Terms

New full repairing & insuring lease available for a term by arrangement direct from the Landlord

Possession

Available now

VAT

The property is elected for VAT

Local Authority

The London Borough of Islington

Compton

Clerkenwell

Parchment House
13 Northburgh Street
EC1V 0JP

Fully-fitted floor available for rent in the heart of Clerkenwell within a converted Victorian warehouse

For Rent

2,323 ft²

Floor Areas & Outgoings

The accommodation comprises of the following:

Name	sq ft	Rent (sq ft)	Rates Payable (sq ft)	Service Charge (sq ft)	Total month	Total year	Availability
4th - Fully Fitted	2,323	£72.50	£17.75	£7.33	£18,889.86	£226,678.34	Available

Compton

Contact Us

All appointments to view must be arranged via sole agents, Compton, through —

Joshua Miller
jm@compton.london
07917 725 365

Jake Kinsler
jk@compton.london
07840 638668

