



# HEYFORD

FIELDS

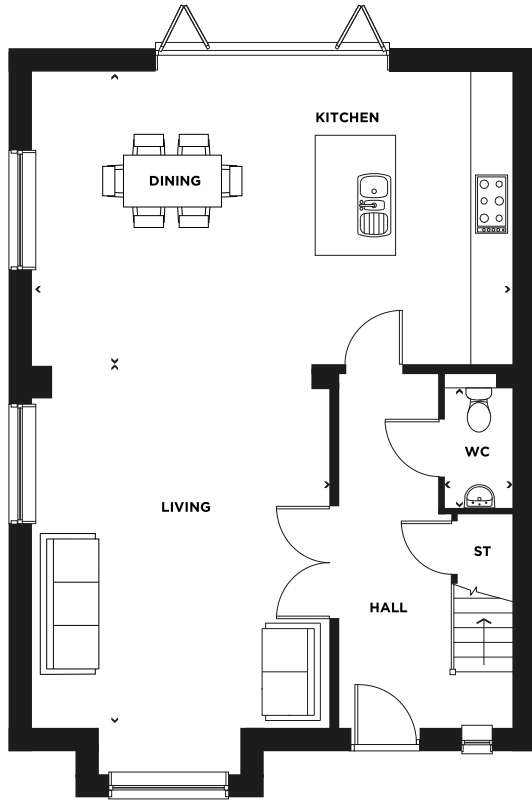


## THE INGRAM

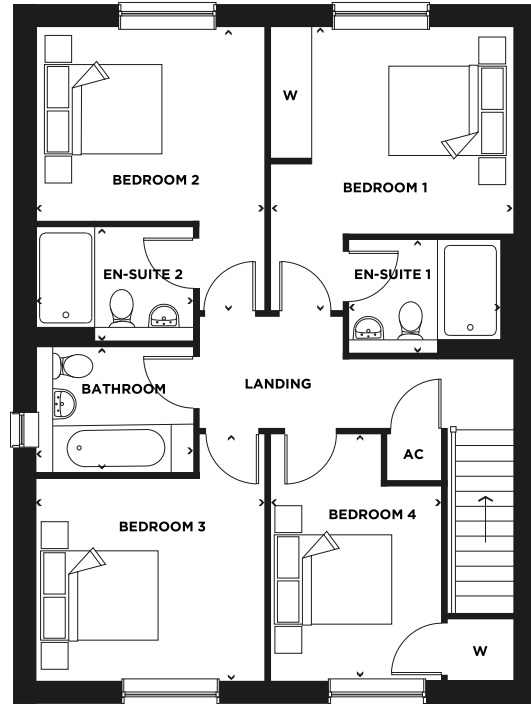
FOUR BEDROOM  
TWO STOREY HOME  
**148m<sup>2</sup> (1598ft<sup>2</sup>)**

OPEN PLAN KITCHEN AND DINING ROOM WITH  
BI-FOLD DOORS LEADING OUT TO A PRIVATE GARDEN |  
FOUR DOUBLE BEDROOMS | TWO EN-SUITES

# THE INGRAM



GROUND FLOOR



FIRST FLOOR

ROOM	M	FT	ROOM	M	FT
KITCHEN/DINING	4.5m X 7.3m	(14'9" X 24')	BEDROOM 1	4.3m X 3.7m	(14'1" X 12'2")
LIVING	5.5m X 4.5m	(18'0" X 14'11")	EN-SUITE 1	1.7m X 2.3m	(5'6" X 7'6")
WC	2.1m X 1.0m	(6'10" X 3'3")	BEDROOM 2	4.3m X 3.5m	(14'1" X 11'6")
			EN-SUITE 2	1.7m X 2.4m	(5'6" X 7'11")
			BEDROOM 3	3.8m X 3.5m	(12'6" X 11'6")
			BEDROOM 4	3.8m X 2.6m	(12'6" X 8'7")
			BATHROOM	1.9m X 2.4m	(6'3" X 7'11")