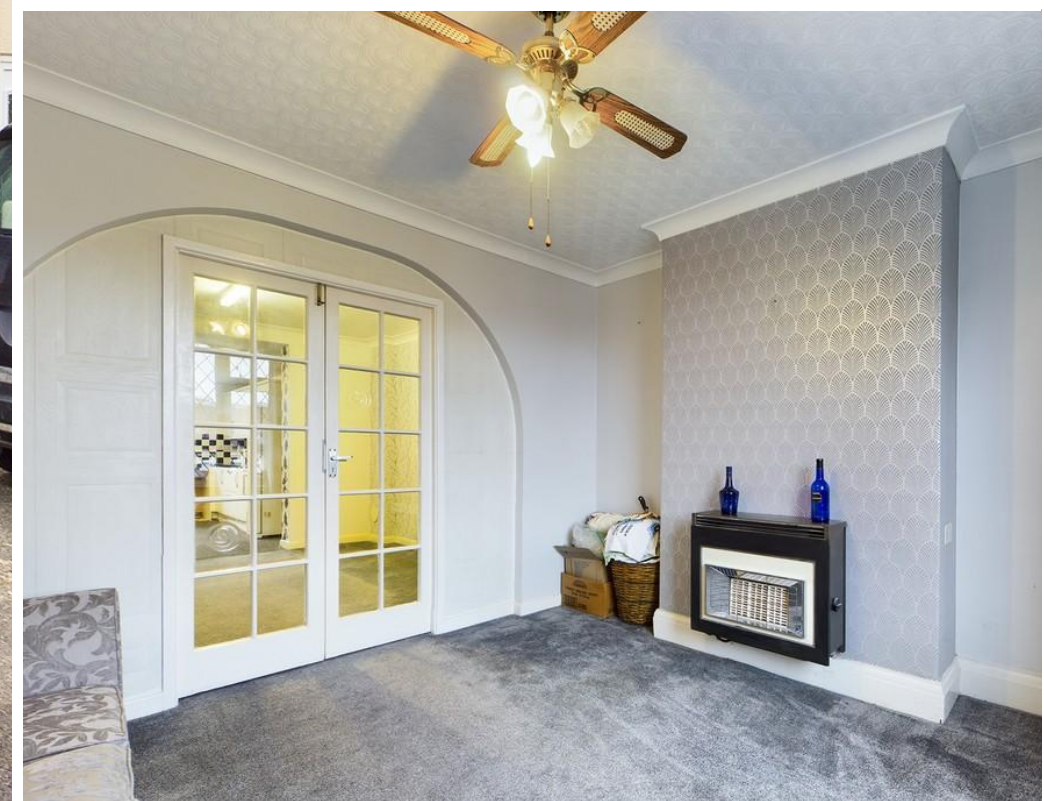


**FOR SALE**



**Semi-Detached House, 2 Bedrooms Rothervale Road, Chesterfield**

GUIDE PRICE **£140,000**

- TWO DOUBLE BEDROOMS
- TWO RECEPTION ROOMS
- DOWNSTAIRS W/C
- NO CHAIN

- LARGE KITCHEN/DINER
- LOW MAINTENANCE GARDEN
- OFF ROAD PARKING
- CLOSE TO TOWN CENTRE

EPC Rating 67 - band D