



# ONE

LONDON ROAD

FLOORPLANS



# ONE

LONDON ROAD

Welcome to One London Road, a collection of 31 stylish one, two and three-bedroom apartments with stunning views of Windsor Castle. These modern homes, which are due for completion in 2022, will feature high specification interiors and thoughtfully-designed layouts, as well as allocated parking for all units.

Created to reflect the perfect blend of modern living and Victorian heritage, each home benefits from quality fixtures and fittings, open plan kitchens, contemporary bathrooms, and bright and airy living spaces. The development is set within a gated community with impressive landscaped communal gardens.

SLOUGH, SL3 7FJ



APARTMENTS  
**ONE BEDROOM**

8 - 29

APARTMENTS  
**TWO BEDROOM**

30 - 41

APARTMENTS  
**THREE BEDROOM**

42 - 47

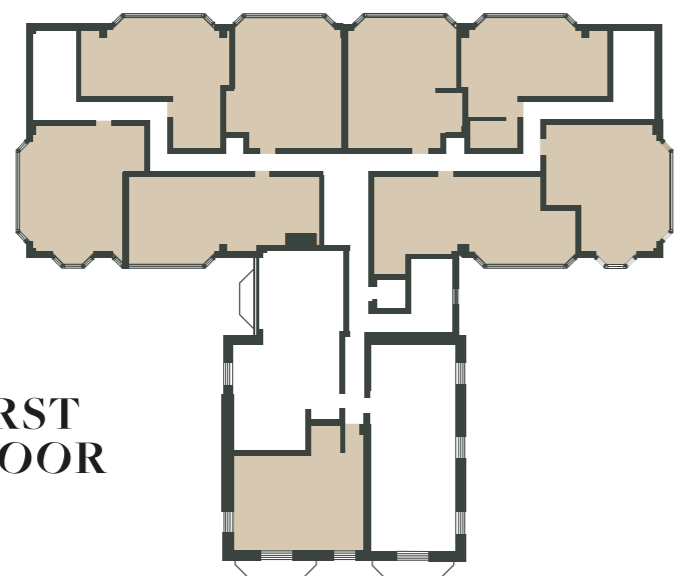


DETAILED  
**FLOORPLANS**

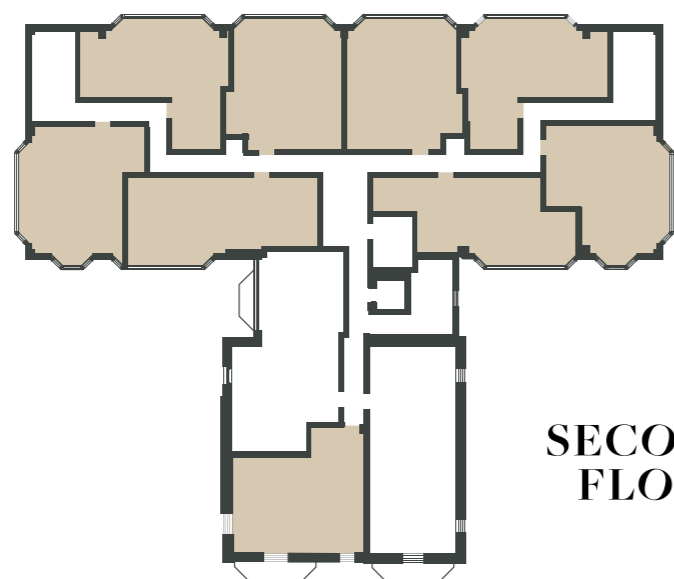




**GROUND  
FLOOR**



**FIRST  
FLOOR**



**SECOND  
FLOOR**

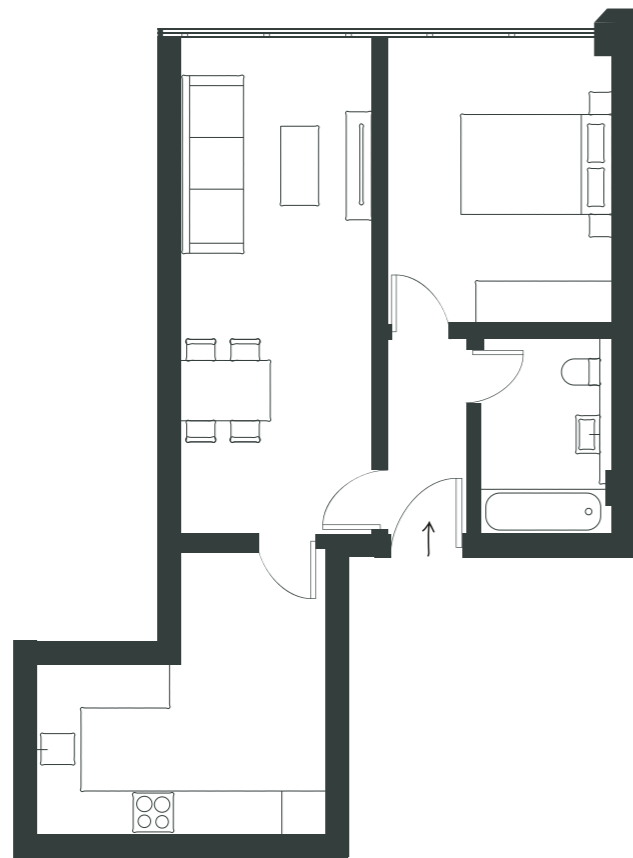
# ONE BEDROOM

UNIT	FLOOR	TOTAL AREA SQM	PARKING
7	Ground	50	Yes
9	1st	51	Yes
10	1st	48	Yes
11	1st	54	Yes
12	1st	50	Yes
14	1st	51	Yes
16	1st	51	Yes
17	1st	58	Yes
18	1st	48	Yes
19	1st	50	Yes
20	2nd	51	Yes
21	2nd	48	Yes
22	2nd	54	Yes
23	2nd	51	Yes
25	2nd	51	Yes
27	2nd	51	Yes
28	2nd	48	Yes
29	2nd	49	Yes
30	2nd	50	Yes

All images and the dimensions given are illustrative for this unit type and individual plots may differ.  
These dimensions should not be used for carpet or flooring sizes, appliance spaces or items of furniture.  
Please check with your sales adviser for each individual property.

# UNIT 7

1 BEDROOM FLAT | GROUND FLOOR



**GROSS INTERNAL AREA**

50 sqm

**LIVING / DINING**

17 sqm

**KITCHEN**

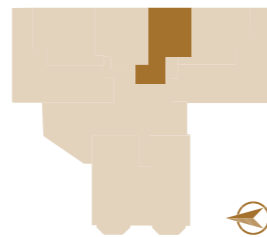
12 sqm

**BEDROOM 1**

12 sqm

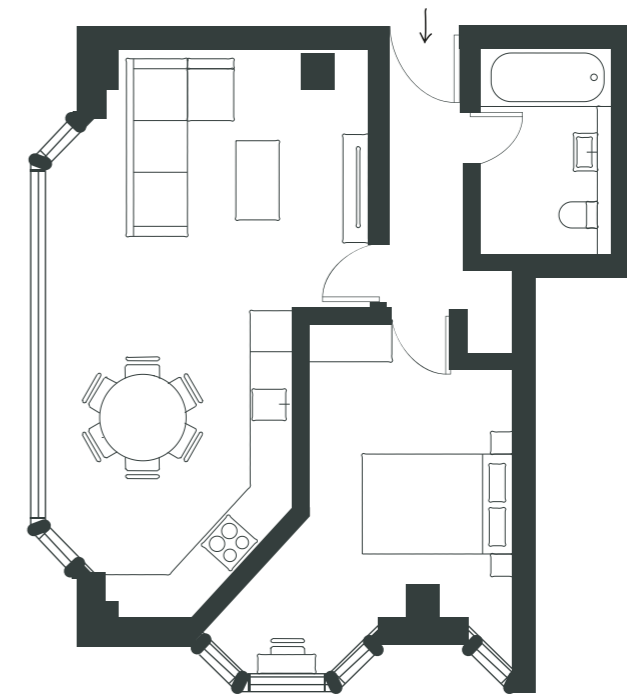
**BATHROOM**

5 sqm



# UNIT 9

1 BEDROOM FLAT | FIRST FLOOR



**GROSS INTERNAL AREA**

51 sqm

**LIVING / DINING / KITCHEN**

26 sqm

**BEDROOM 1**

13 sqm

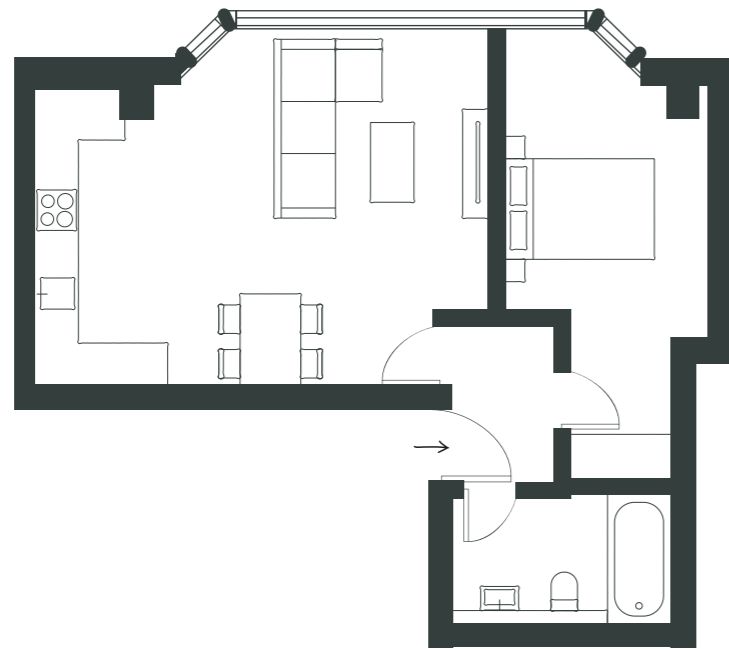
**BATHROOM**

5 sqm



## UNIT 10

1 BEDROOM FLAT | FIRST FLOOR



## GROSS INTERNAL AREA

48 sqm

## LIVING / DINING / KITCHEN

26 sqm

## BEDROOM 1

12 sqm

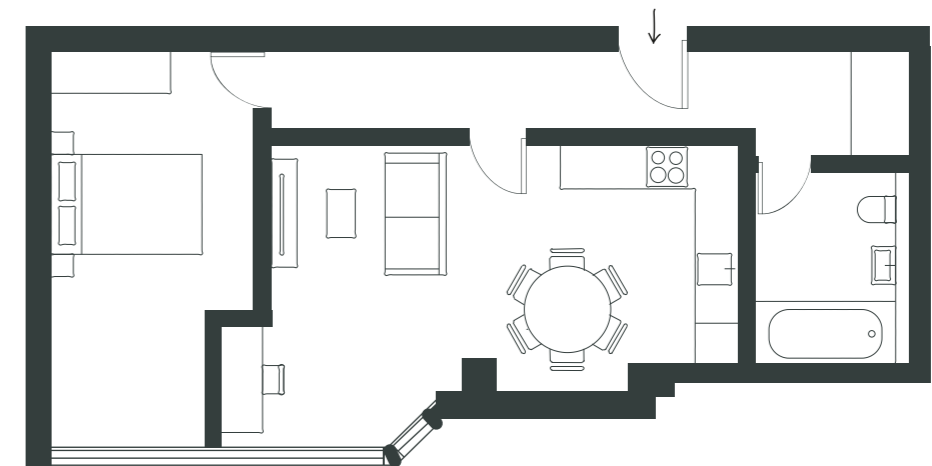
## BATHROOM

5 sqm



## UNIT 11

1 BEDROOM FLAT | FIRST FLOOR



## GROSS INTERNAL AREA

54 sqm

## LIVING / DINING / KITCHEN

22 sqm

## BEDROOM 1

13 sqm

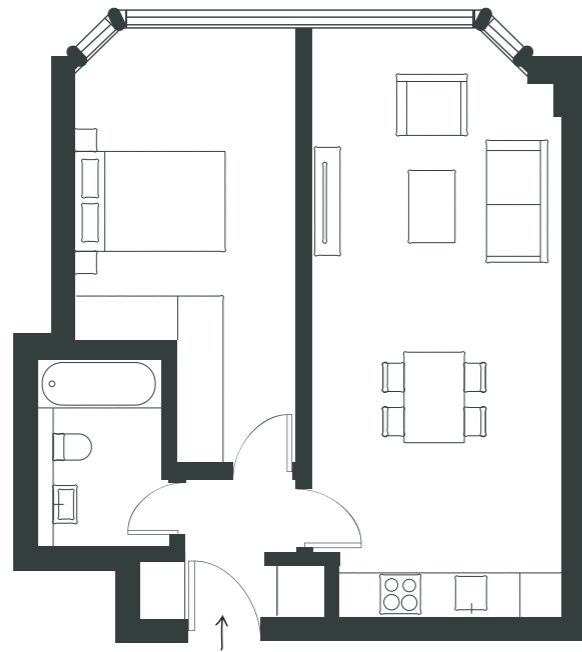
## BATHROOM

5 sqm



# UNIT 12

1 BEDROOM FLAT | FIRST FLOOR



**GROSS INTERNAL AREA**

50 sqm

**LIVING / DINING / KITCHEN**

25 sqm

**BEDROOM 1**

15 sqm

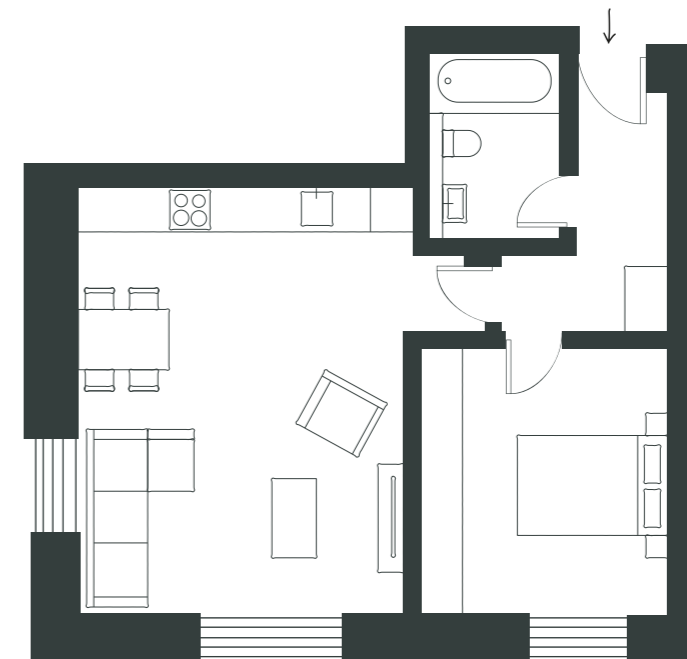
**BATHROOM**

4.4 sqm



# UNIT 14

1 BEDROOM FLAT | FIRST FLOOR



**GROSS INTERNAL AREA**

51 sqm

**LIVING / DINING / KITCHEN**

26 sqm

**BEDROOM 1**

12 sqm

**BATHROOM**

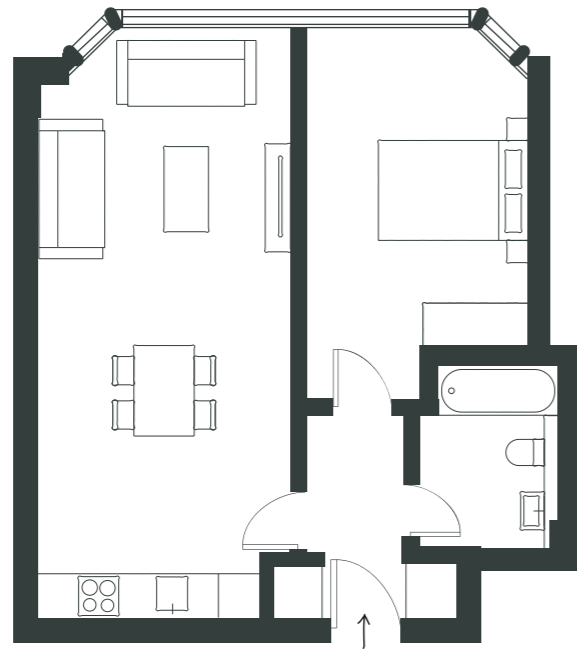
5 sqm





# UNIT 16

1 BEDROOM FLAT | FIRST FLOOR



**GROSS INTERNAL AREA**

51 sqm

LIVING / DINING / KITCHEN

26 sqm

BEDROOM 1

14 sqm

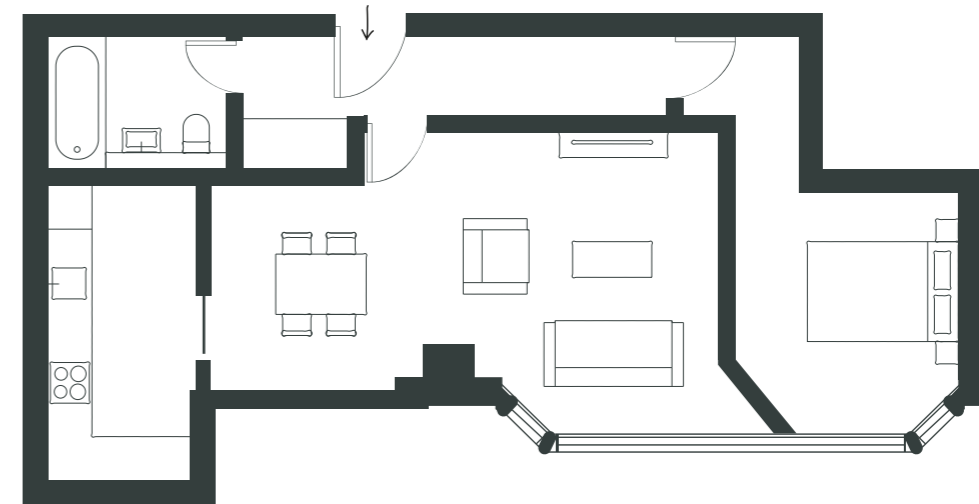
BATHROOM

5 sqm



# UNIT 17

1 BEDROOM FLAT | FIRST FLOOR



**GROSS INTERNAL AREA**

58 sqm

LIVING / DINING

24 sqm

KITCHEN

8 sqm

BEDROOM 1

12 sqm

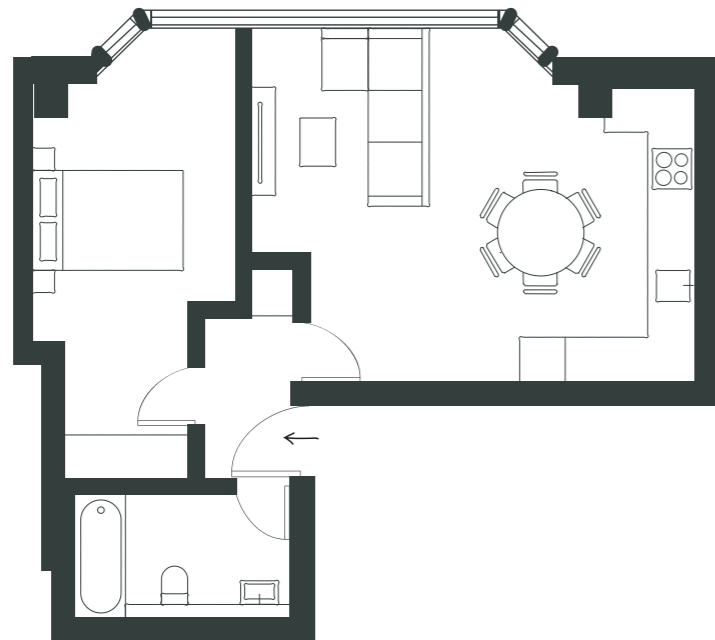
BATHROOM

4 sqm



## UNIT 18

1 BEDROOM FLAT | FIRST FLOOR

**GROSS INTERNAL AREA**

48 sqm

**LIVING / DINING / KITCHEN**

25 sqm

**BEDROOM 1**

13 sqm

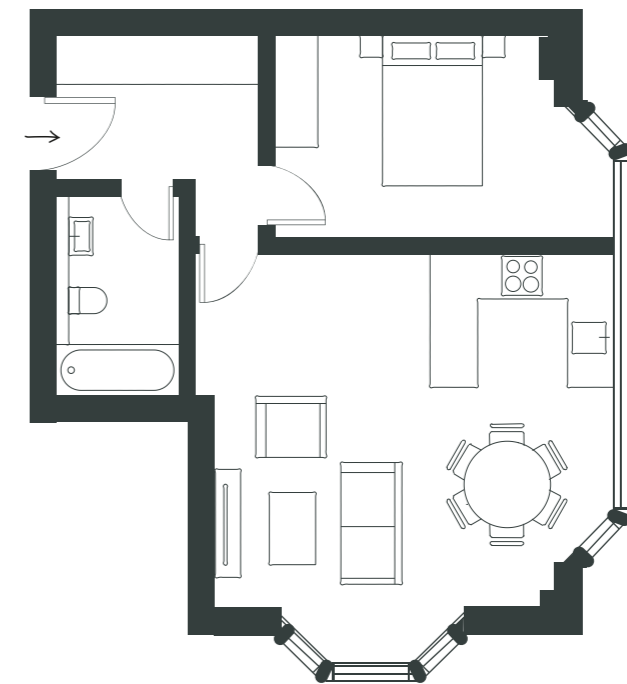
**BATHROOM**

5 sqm



## UNIT 19

1 BEDROOM FLAT | FIRST FLOOR

**GROSS INTERNAL AREA**

50 sqm

**LIVING / DINING / KITCHEN**

26 sqm

**BEDROOM 1**

11 sqm

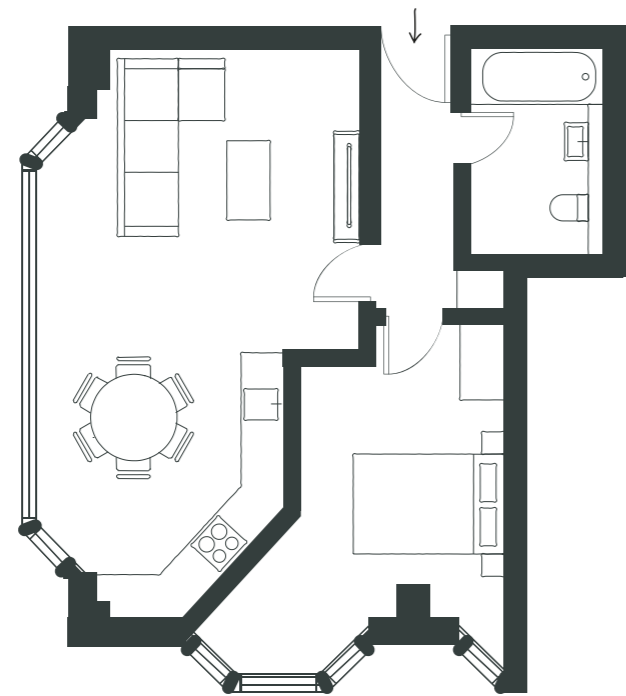
**BATHROOM**

5 sqm



# UNIT 20

1 BEDROOM FLAT | SECOND FLOOR



**GROSS INTERNAL AREA**

51 sqm

**LIVING / DINING / KITCHEN**

26 sqm

**BEDROOM 1**

13 sqm

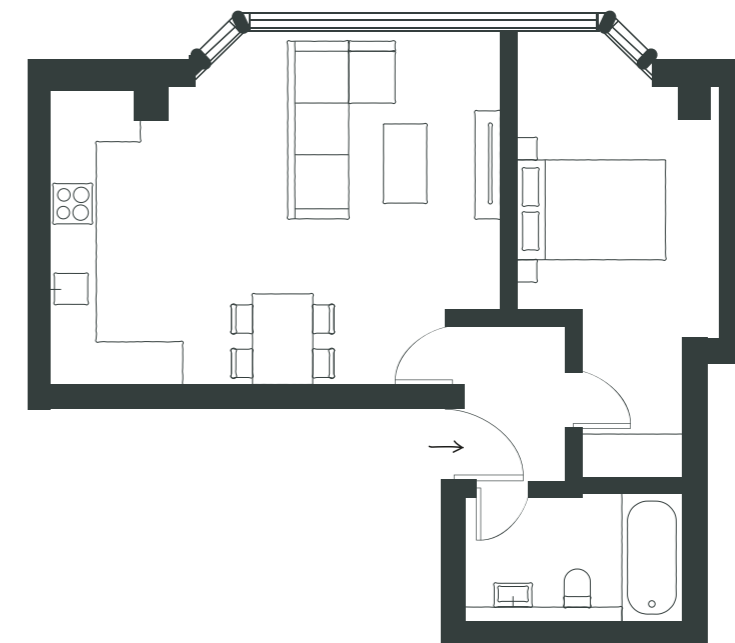
**BATHROOM**

5 sqm



# UNIT 21

1 BEDROOM FLAT | SECOND FLOOR



**GROSS INTERNAL AREA**

48 sqm

**LIVING / DINING / KITCHEN**

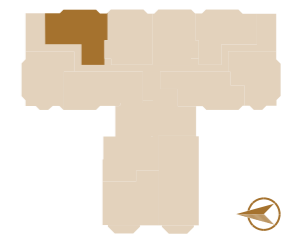
26 sqm

**BEDROOM 1**

13 sqm

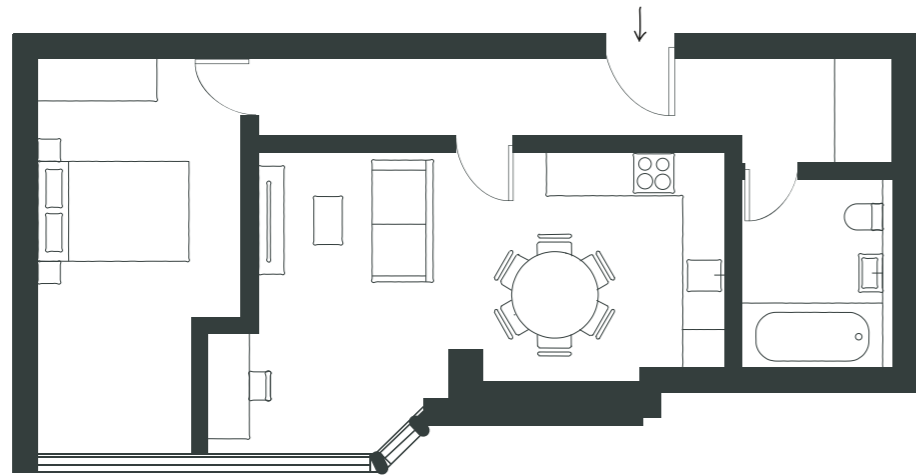
**BATHROOM**

5 sqm



# UNIT 22

1 BEDROOM FLAT | SECOND FLOOR



**GROSS INTERNAL AREA**

54 sqm

LIVING / DINING / KITCHEN

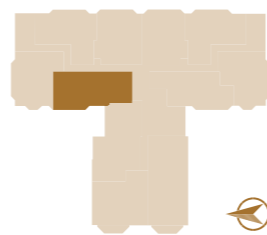
22 sqm

BEDROOM 1

13 sqm

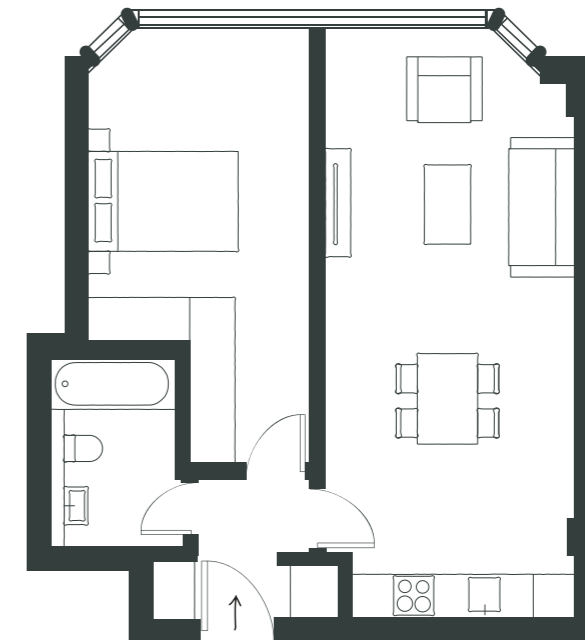
BATHROOM

5 sqm



# UNIT 23

1 BEDROOM FLAT | SECOND FLOOR



**GROSS INTERNAL AREA**

51 sqm

LIVING / DINING / KITCHEN

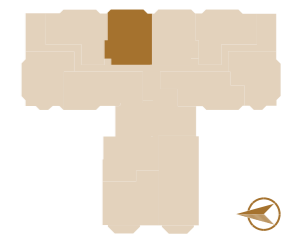
25 sqm

BEDROOM 1

15 sqm

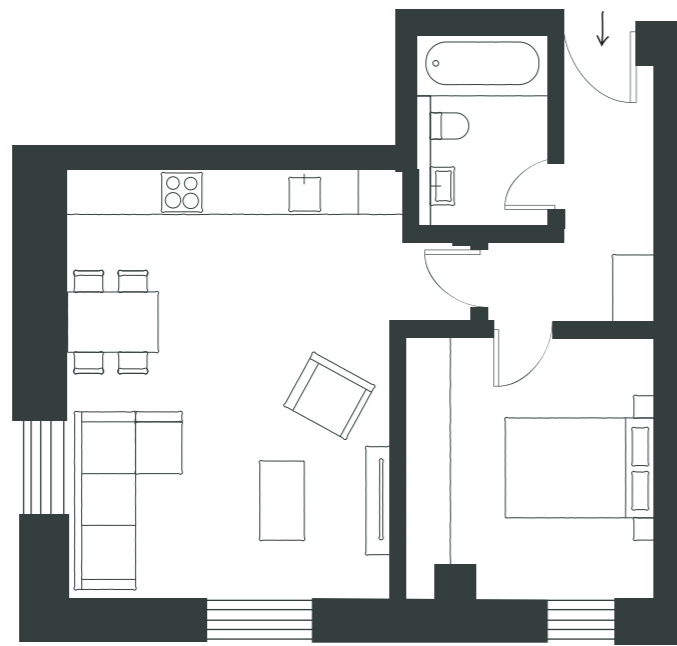
BATHROOM

4.4 sqm



# UNIT 25

1 BEDROOM FLAT | SECOND FLOOR



**GROSS INTERNAL AREA**

51 sqm

**LIVING / DINING / KITCHEN**

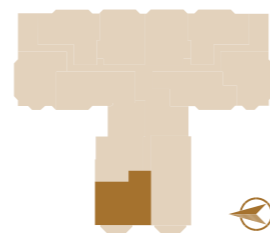
27 sqm

**BEDROOM 1**

12 sqm

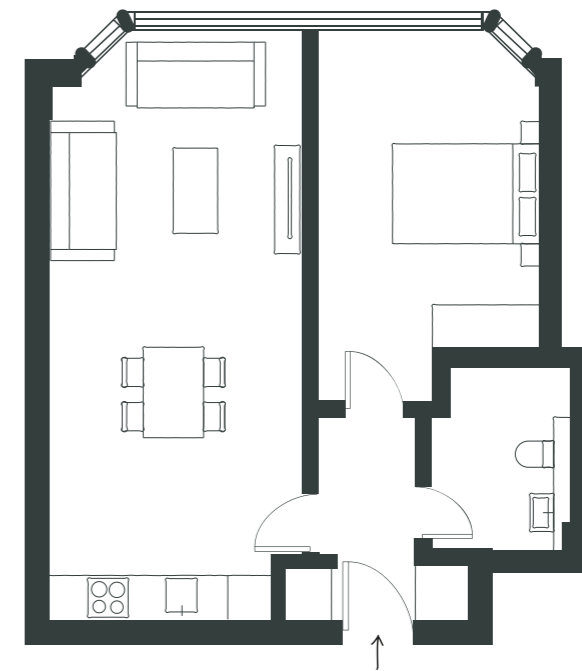
**BATHROOM**

5 sqm



# UNIT 27

1 BEDROOM FLAT | SECOND FLOOR



**GROSS INTERNAL AREA**

51 sqm

**LIVING / DINING / KITCHEN**

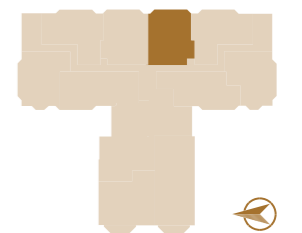
26 sqm

**BEDROOM 1**

14 sqm

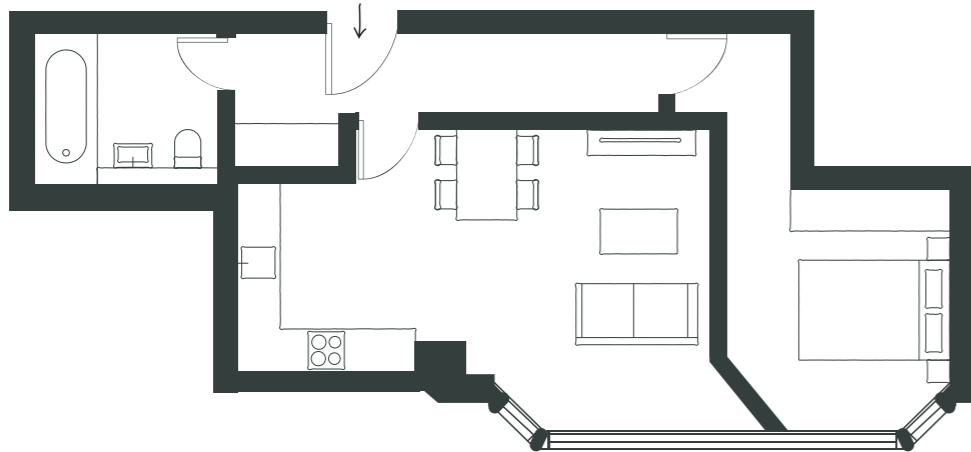
**BATHROOM**

5 sqm



# UNIT 28

1 BEDROOM FLAT | SECOND FLOOR



**GROSS INTERNAL AREA**

48 sqm

**LIVING / DINING / KITCHEN**

22 sqm

**BEDROOM 1**

12 sqm

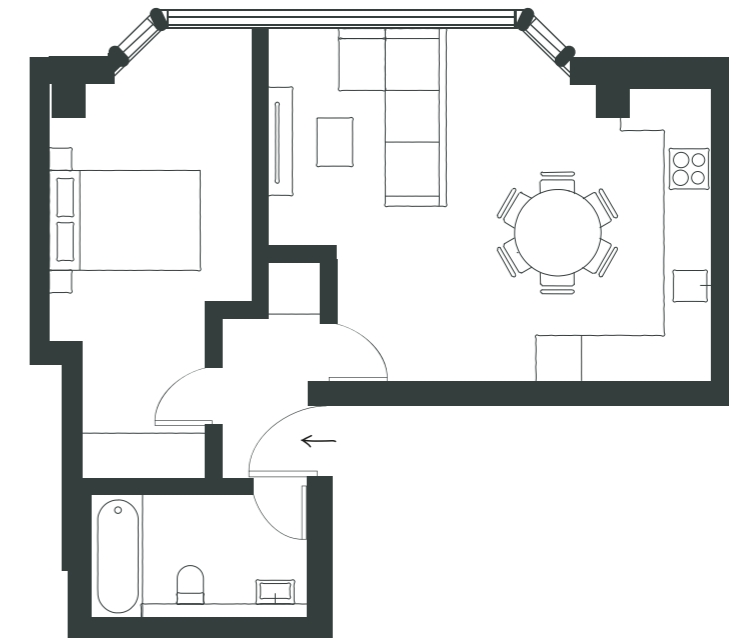
**BATHROOM**

5 sqm



# UNIT 29

1 BEDROOM FLAT | SECOND FLOOR



**GROSS INTERNAL AREA**

49 sqm

**LIVING / DINING / KITCHEN**

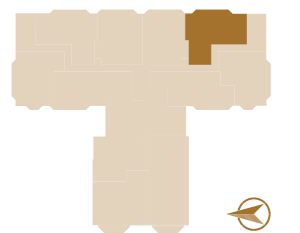
25 sqm

**BEDROOM 1**

13 sqm

**BATHROOM**

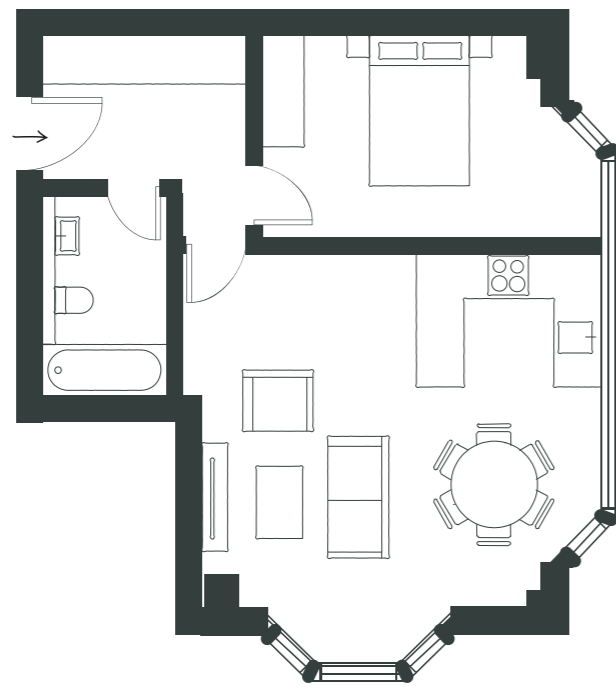
5 sqm





# UNIT 30

1 BEDROOM FLAT | SECOND FLOOR



**GROSS INTERNAL AREA**

50 sqm

**LIVING / DINING / KITCHEN**

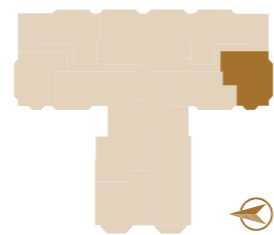
26 sqm

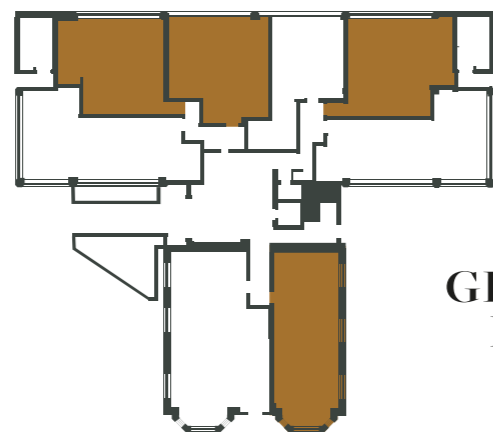
**BEDROOM 1**

11 sqm

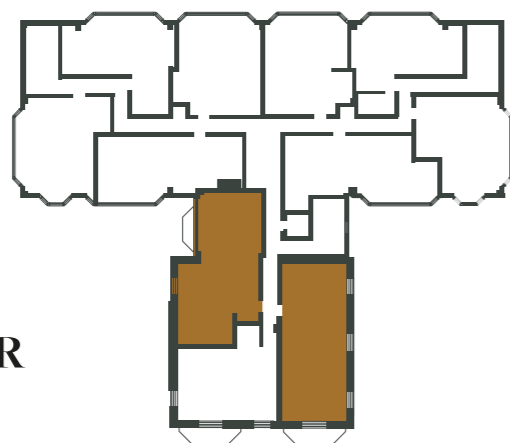
**BATHROOM**

5 sqm

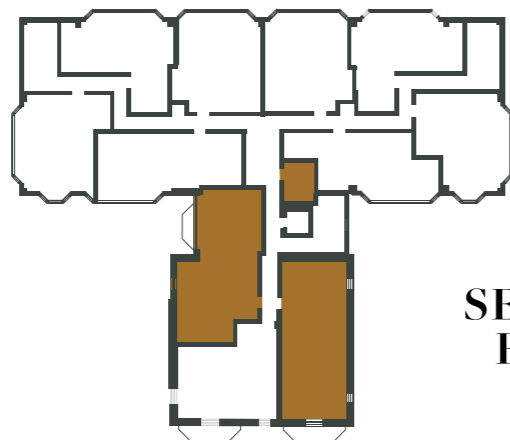




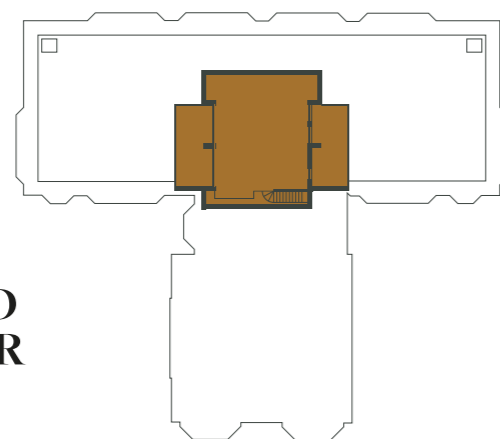
**GROUND  
FLOOR**



**FIRST  
FLOOR**



**SECOND  
FLOOR**



**THIRD  
FLOOR**

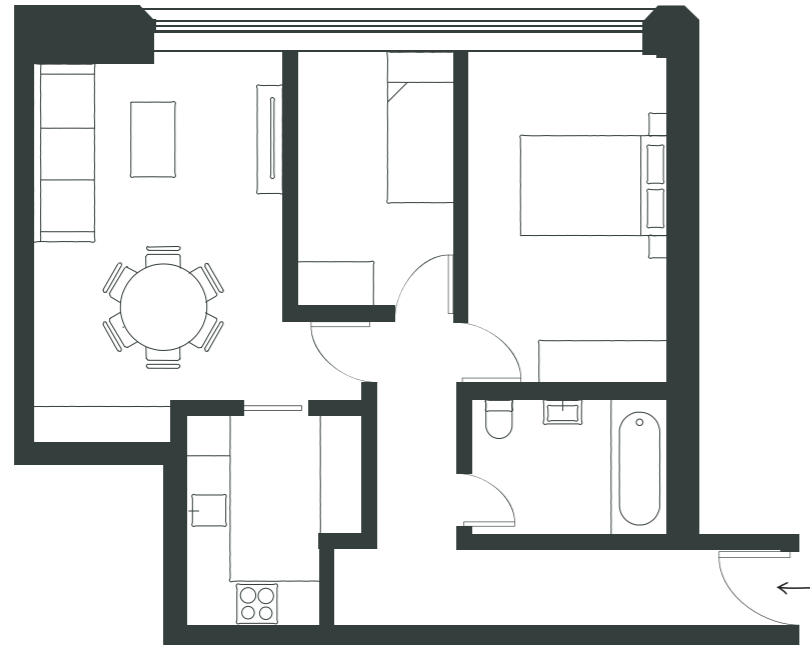
# TWO BEDROOMS

UNIT	FLOOR	TOTAL AREA SQM	PARKING
1	Ground	61	Yes
4	Ground	69	Yes
6	Ground	63	Yes
8	Ground	61	Yes
13	1st	65	Yes
15	1st	63	Yes
24	2nd	65	Yes
26	2nd	64	Yes
31	2nd/3rd	77	Yes

All images and the dimensions given are illustrative for this unit type and individual plots may differ.  
These dimensions should not be used for carpet or flooring sizes, appliance spaces or items of furniture.  
Please check with your sales adviser for each individual property.

# UNIT 1

2 BEDROOM FLAT | GROUND FLOOR



**GROSS INTERNAL AREA**

61 sqm

**LIVING / DINING**

18 sqm

**KITCHEN**

6 sqm

**BEDROOM 1**

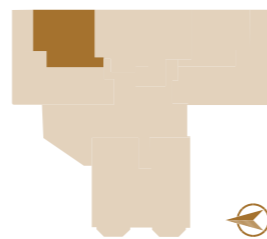
12 sqm

**BEDROOM 2**

7 sqm

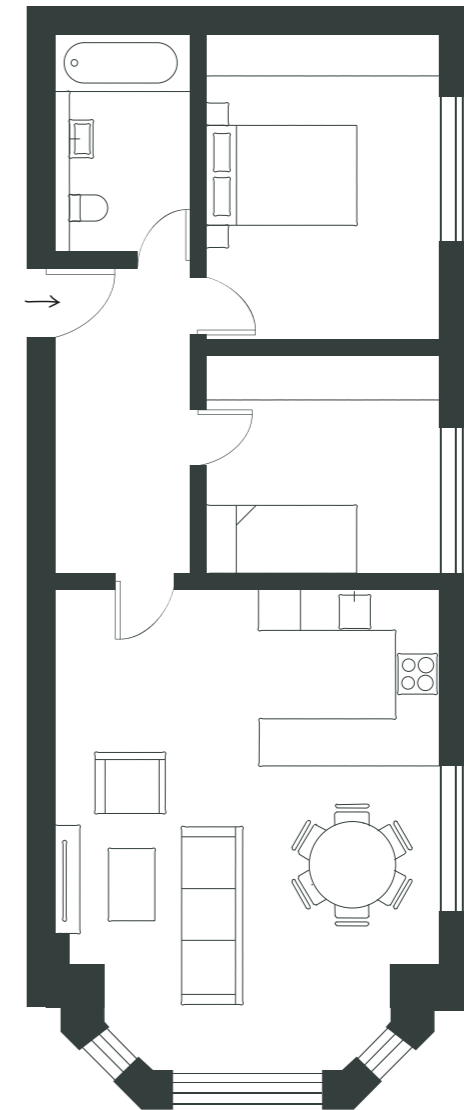
**BATHROOM**

5 sqm



# UNIT 4

2 BEDROOM FLAT | GROUND FLOOR



**GROSS INTERNAL AREA**

69 sqm

**KITCHEN / LIVING / DINING**

31 sqm

**BEDROOM 1**

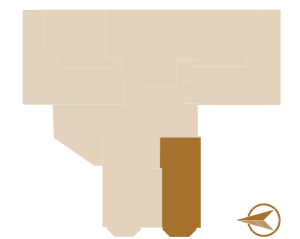
13 sqm

**BEDROOM 2**

9 sqm

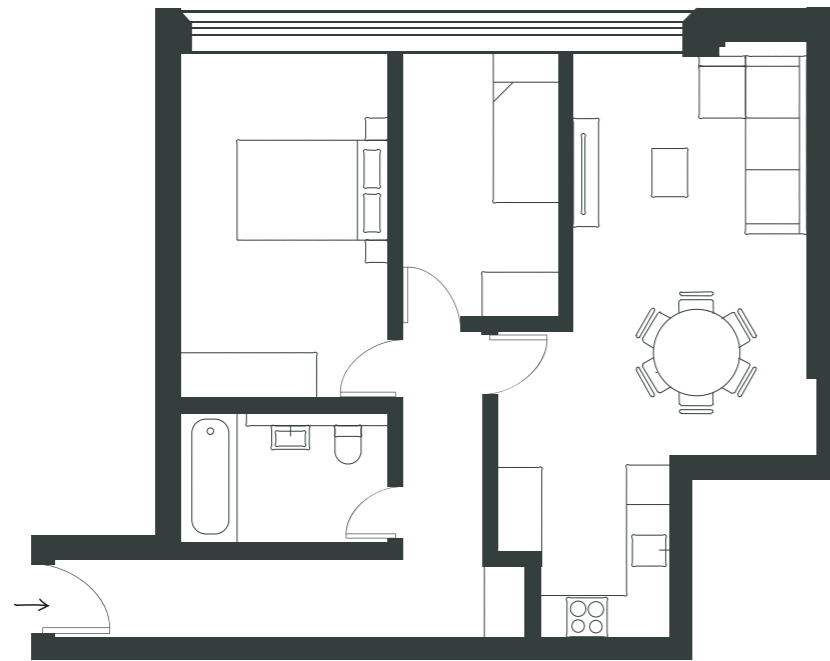
**BATHROOM**

5.4 sqm



# UNIT 6

2 BEDROOM FLAT | GROUND FLOOR



**GROSS INTERNAL AREA**

63 sqm

KITCHEN / LIVING / DINING

24 sqm

BEDROOM 1

13 sqm

BEDROOM 2

7 sqm

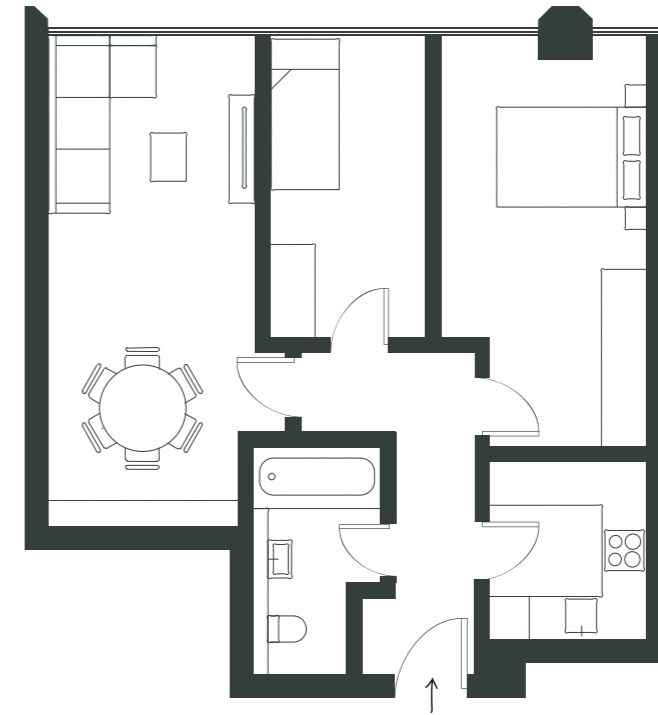
BATHROOM

5 sqm



# UNIT 8

2 BEDROOM FLAT | GROUND FLOOR



**GROSS INTERNAL AREA**

61 sqm

LIVING / DINING

18 sqm

KITCHEN

5 sqm

BEDROOM 1

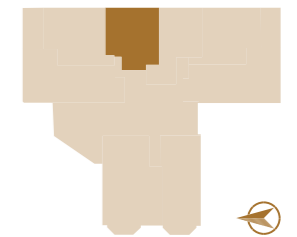
14 sqm

BEDROOM 2

8 sqm

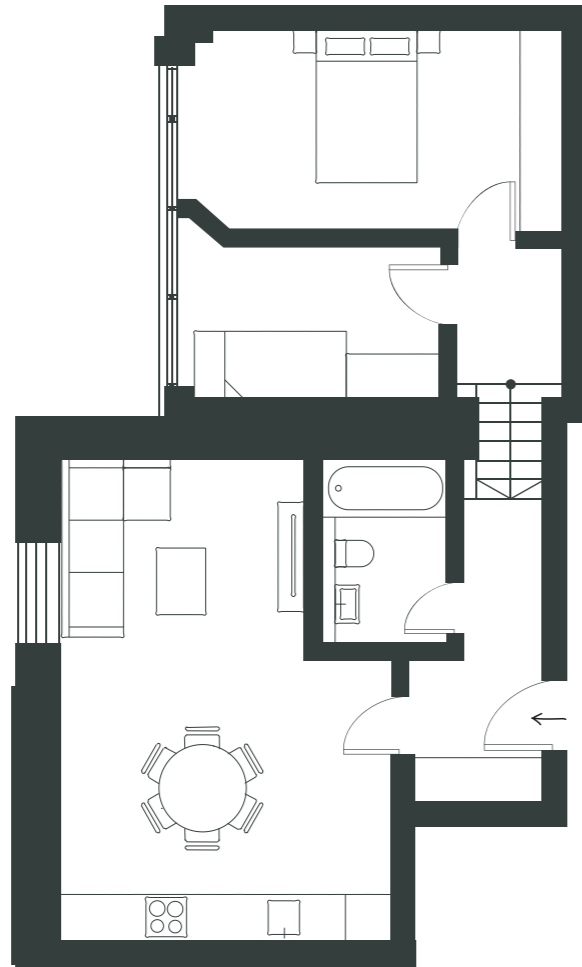
BATHROOM

5 sqm



# UNIT 13

2 BEDROOM FLAT | FIRST FLOOR



**GROSS INTERNAL AREA**

65 sqm

LIVING / DINING / KITCHEN

25 sqm

BEDROOM 1

13 sqm

BEDROOM TWO

7 sqm

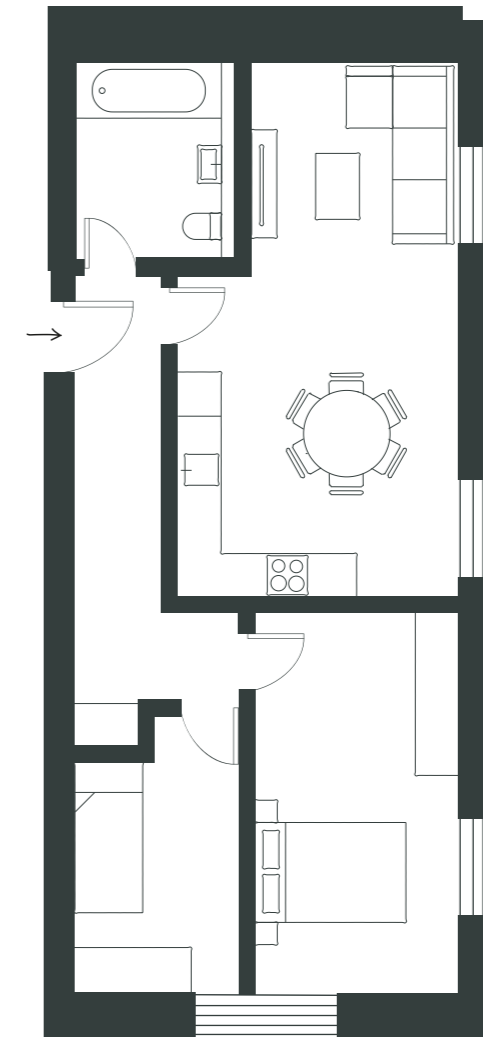
BATHROOM

4 sqm



# UNIT 15

2 BEDROOM FLAT | FIRST FLOOR



**GROSS INTERNAL AREA**

63 sqm

LIVING / DINING / KITCHEN

24 sqm

BEDROOM 1

14 sqm

BEDROOM 2

8 sqm

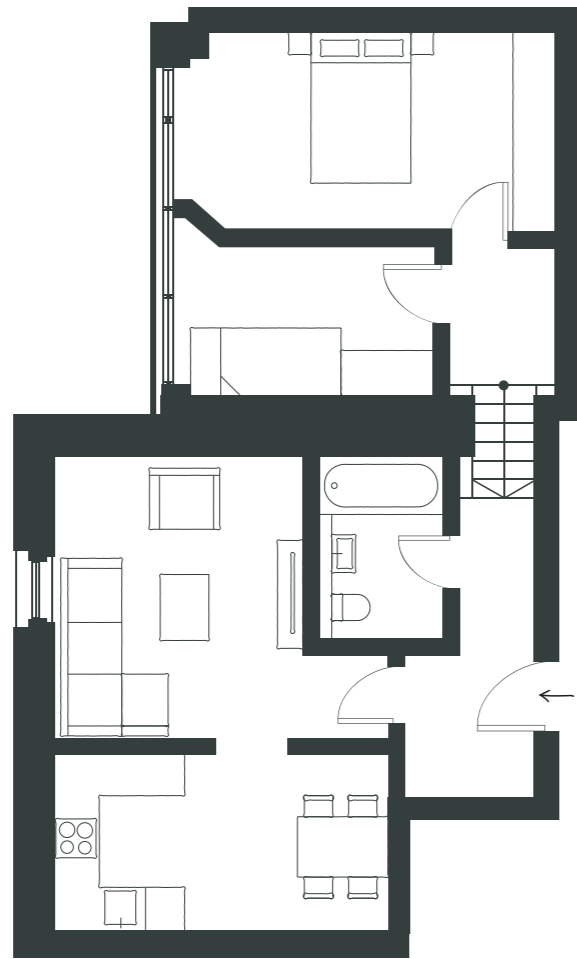
BATHROOM

6 sqm



# UNIT 24

2 BEDROOM FLAT | SECOND FLOOR



**GROSS INTERNAL AREA**

65 sqm

**LIVING ROOM**

14 sqm

**DINING / KITCHEN**

11 sqm

**BEDROOM 1**

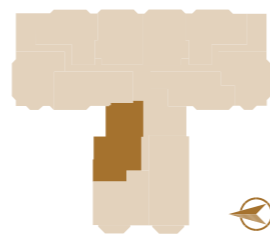
13 sqm

**BEDROOM 2**

7 sqm

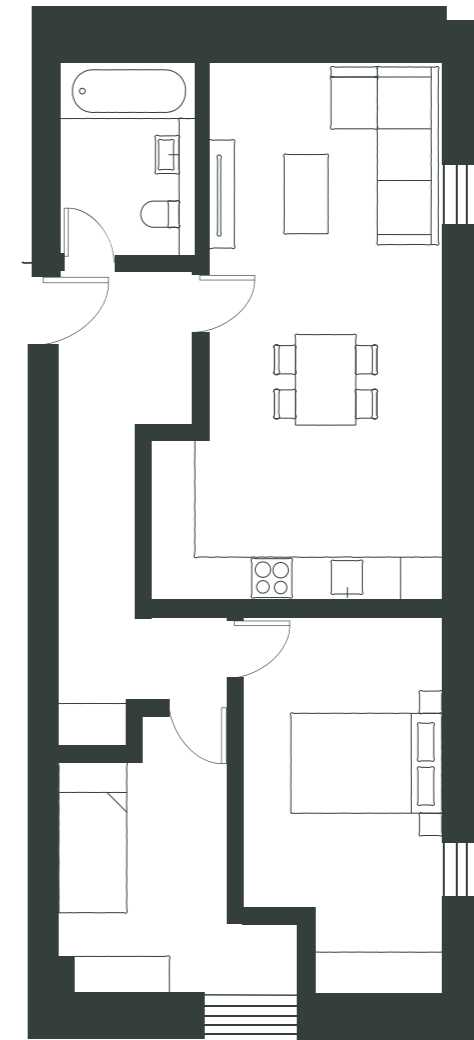
**BATHROOM**

4 sqm



# UNIT 26

2 BEDROOM FLAT | SECOND FLOOR



**GROSS INTERNAL AREA**

64 sqm

**LIVING / DINING / KITCHEN**

25 sqm

**BEDROOM 1**

13 sqm

**BEDROOM 2**

9 sqm

**BATHROOM**

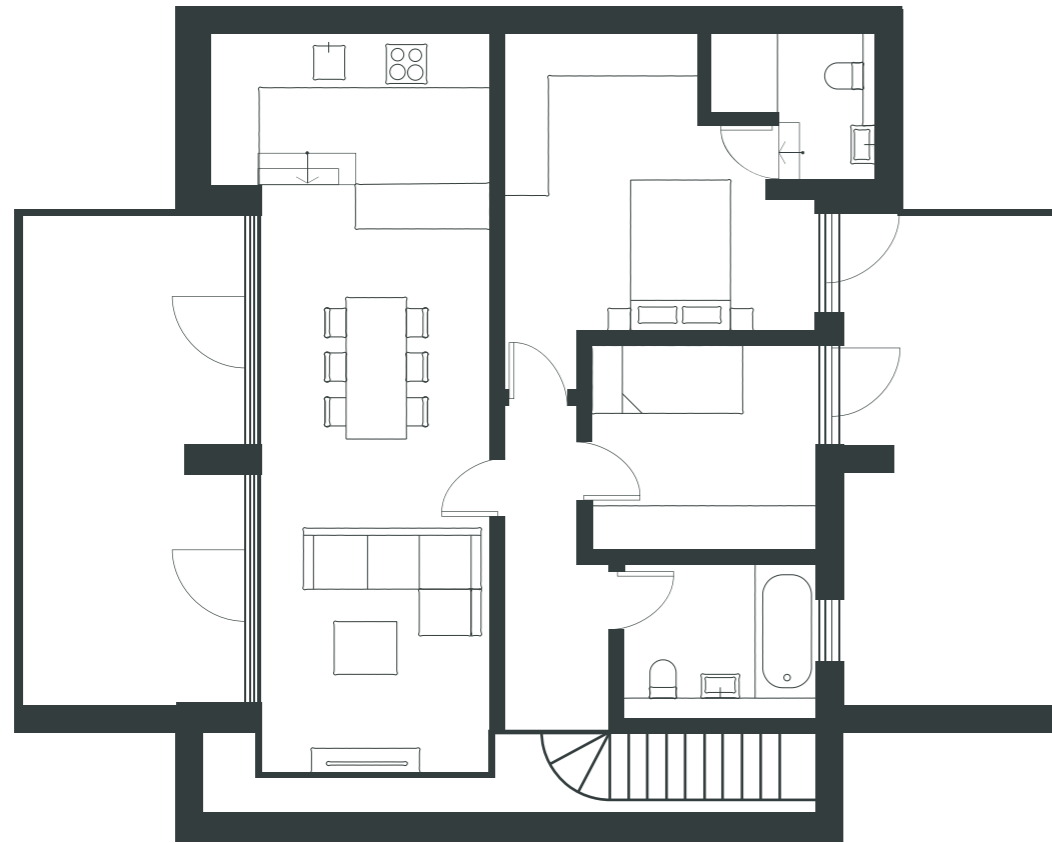
5 sqm





# UNIT 31

2 BEDROOM FLAT | THIRD FLOOR



**GROSS INTERNAL AREA**

77 sqm

LIVING / DINING / KITCHEN

31 sqm

BEDROOM 1

15 sqm

ENSUITE

4 sqm

BEDROOM 2

8 sqm

BATHROOM

5.4 sqm

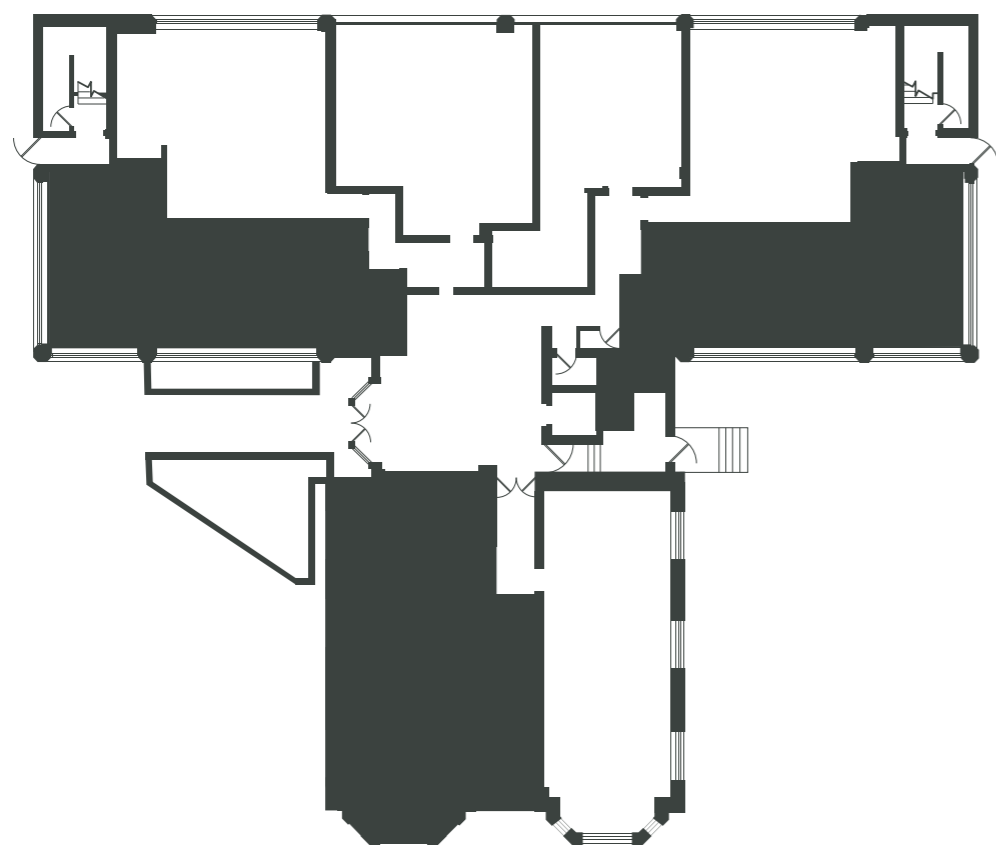
BALCONY / TERRACE

15 sqm

BALCONY / TERRACE 2

14 sqm





**GROUND FLOOR**

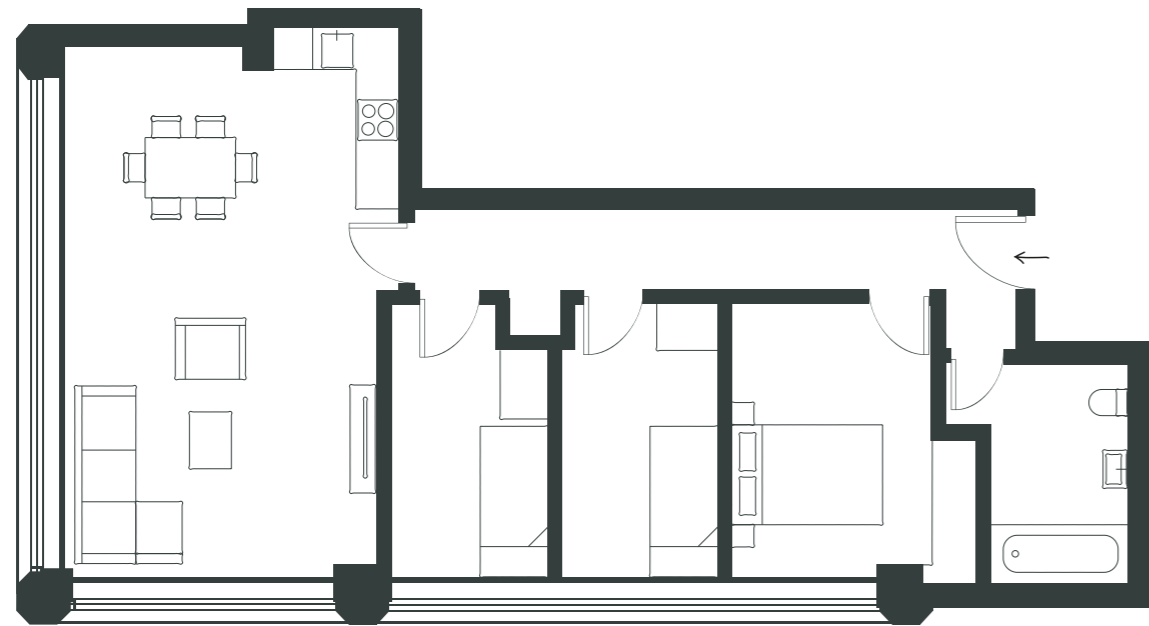
# THREE BEDROOMS

UNIT	FLOOR	TOTAL AREA SQM	PARKING
2	Ground	76	Yes
3	Ground	95	Yes
5	Ground	72	Yes

All images and the dimensions given are illustrative for this unit type and individual plots may differ.  
These dimensions should not be used for carpet or flooring sizes, appliance spaces or items of furniture.  
Please check with your sales adviser for each individual property.

# UNIT 2

3 BEDROOM FLAT | GROUND FLOOR



**GROSS INTERNAL AREA**

76 sqm

**KITCHEN / LIVING**

31 sqm

**BEDROOM 1**

11 sqm

**BEDROOM 2**

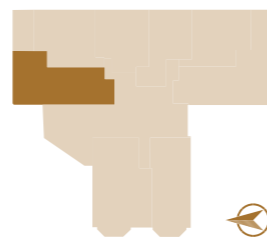
8 sqm

**BEDROOM 3**

7 sqm

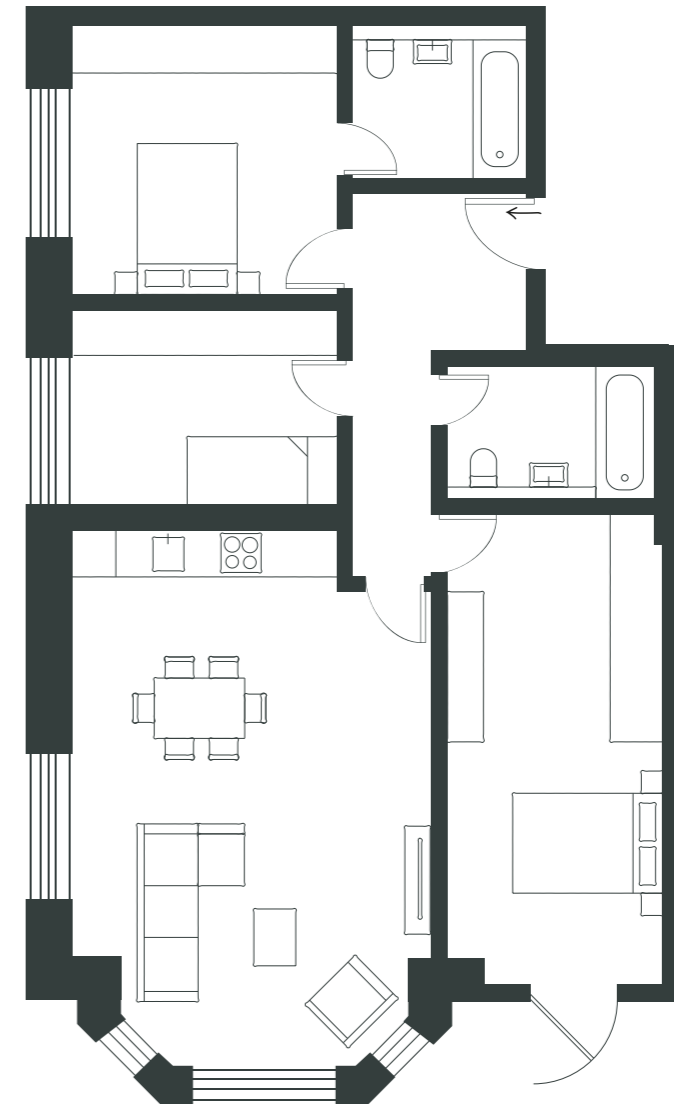
**BATHROOM**

6 sqm



# UNIT 3

3 BEDROOM FLAT | GROUND FLOOR



**GROSS INTERNAL AREA**

95 sqm

**LIVING / DINING / KITCHEN**

32 sqm

**BEDROOM 1**

18 sqm

**BEDROOM 2**

13 sqm

**BEDROOM 3**

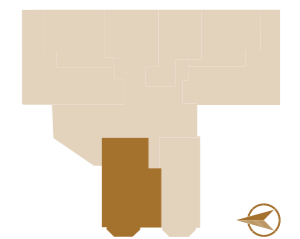
9 sqm

**BATHROOM**

5 sqm

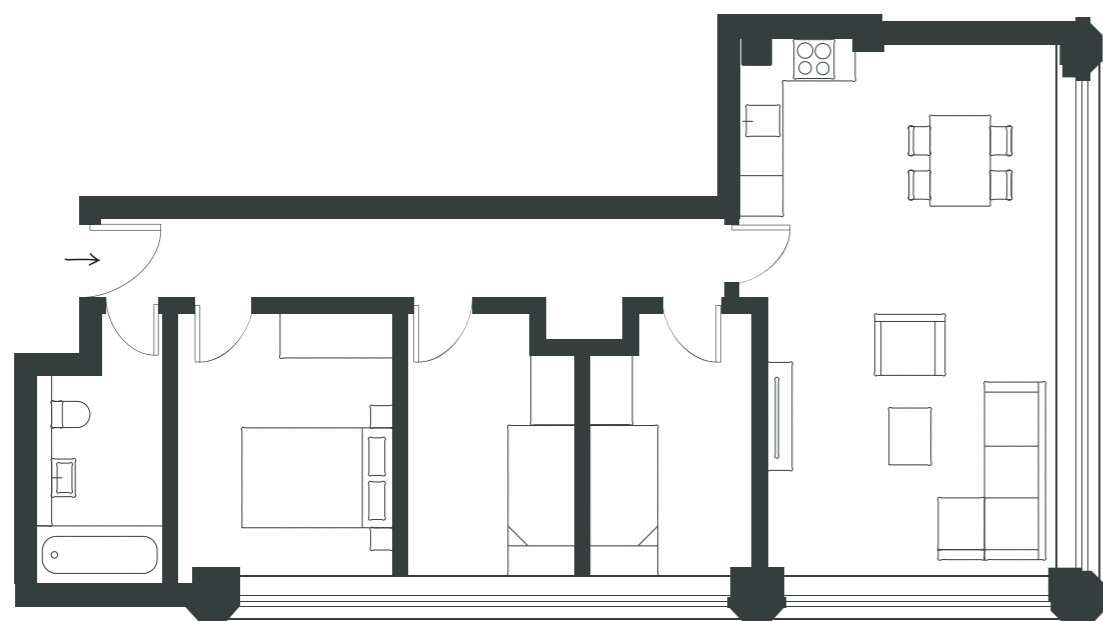
**ENSUITE**

5 sqm



# UNIT 5

3 BEDROOM FLAT | GROUND FLOOR



**GROSS INTERNAL AREA**

72 sqm

LIVING / DINING / KITCHEN

29 sqm

BEDROOM 1

10 sqm

BEDROOM 2

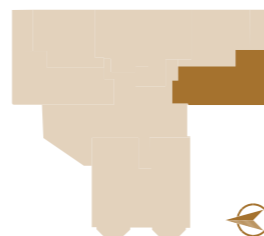
8 sqm

BEDROOM 3

7 sqm

BATHROOM

5.4 sqm







VISIT OUR  
ONLINE VR  
TOUR



FOR SALES ENQUIRIES  
PLEASE CONTACT

mi land & new homes

0207 323 9574

ONELONDONROAD@MI-HOMES.CO.UK

WWW.ONE-LONDONROAD.COM

Images & Brochure Design: ADEMCHIC

**DISCLAIMER** The information in this brochure is indicative and is intended to act as a guide only as to the finished product. These particulars should not be relied upon as statements of fact or representations and applicants must satisfy themselves by inspection or otherwise as to their correctness. This information does not constitute a contract or warranty. Travel directions are courtesy of Google Maps and TFL and represent fastest journey times. Computer generated images are conceptual only and subject to change. Final materials and finishes may differ from those shown. Diamond Investment Management operates a policy of continuous product development and reserves the right to alter any part of development specification at any time. For the latest information please consult one of our sales negotiators.



Backed by  
HM Government



ONE

SLOUGH, SL3 7FJ

[WWW.ONE-LONDONROAD.COM](http://WWW.ONE-LONDONROAD.COM)  
0207 323 9574