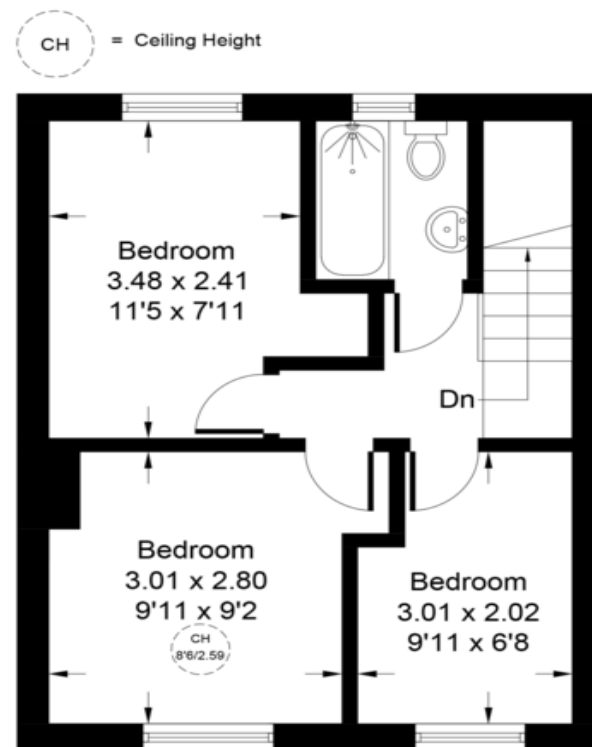
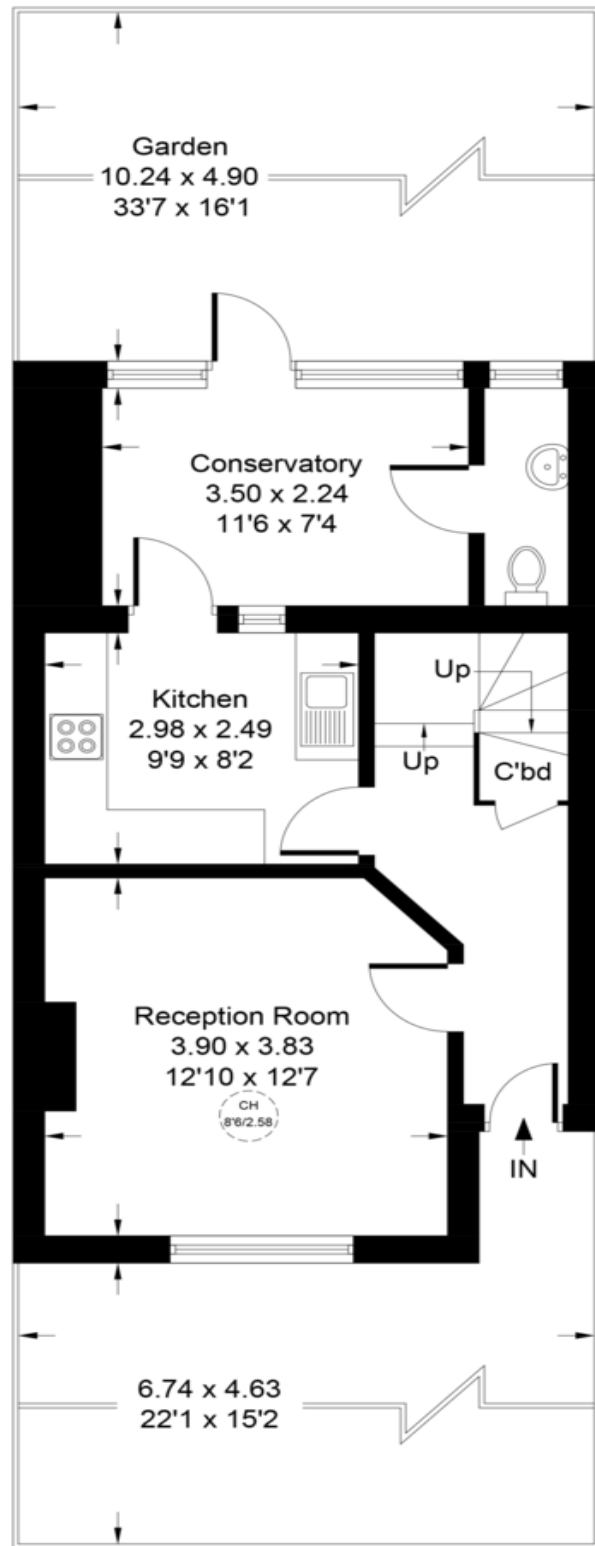


Approximate Gross Internal Area = 77.16 sq m / 831 sq ft



Whilst every attempt has been made to ensure the accuracy of the floor plan contained here, measurements of doors, windows, rooms and any other items are approximate and no responsibility is taken for any error, omission, or mis-statement. This plan is for illustrative purposes only and should be used as such by any prospective purchaser.



Maurice Street, W12 7AD

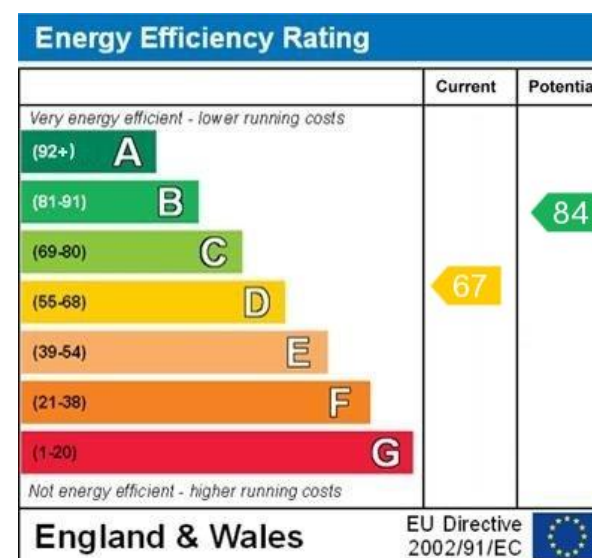
£590,000 Freehold

Key Features

- Three Bedroom House
- Mid Terrace
- Separate Kitchen
- Close To East Acton Station
- Zone Two
- Shepherds Bush
- Currently Rented
- Downstairs Cloak Room

Description

Hart and co are please to present a three-bedroom mid terrace house with own private drive located in Shepherds Bush. The ground floor accommodation comprises a front reception separate kitchen breakfast room leading onto a conservatory. further benefits private garden leading off the conservatory also a downstairs cloak room. the first-floor accommodation comprises three bedrooms and a family bathroom. Maurice Street is situated not too far from Westfield's shopping centre and is within walking distance to East Acton Station.



WWW.EPC4U.COM