

17 MAXTONE TERRACE

GILMERTON, CRIEFF, PH7 3ND



LivingGeddes
W.S. • Solicitors • Estate Agents

17 MAXTONE TERRACE, GILMERTON, CRIEFF, PH7 3ND

We are delighted to offer for sale this attractive & deceptively spacious two bedroom semi-detached villa enjoying a quiet location in the popular small village of Gilmerton, some 2 miles from the bustling market town of Crieff. Set over 2 floors, the accommodation comprises on the ground floor: HALL with stairs to upper floor, large LOUNGE with wood-burning stove, BREAKFASTING KITCHEN, CONSERVATORY and BATHROOM. There are 2 DOUBLE BEDROOMS on the upper floor, both with ample built-in storage. The property is warmed primarily by oil-fired central heating, supplemented by the wood-burning stove. In addition, the photovoltaic panels situated within the garden grounds, divert excess electricity to heat water and we understand benefit from a feed-in tariff supplying electricity back to the grid.

A notable feature of the property are the substantial garden grounds which extend to the side, bordered by woodland & open countryside. Areas of stone-chips are laid immediately around the property, with a timber deck & large area of lawn, with mature planting & fruit trees, a small burn is located at the top of the garden. There is unrestricted parking at the front of the property.

17 Maxtone Terrace is a charming property, enjoying a quiet cul-de-sac location & likely to have broad appeal. Early viewing is advised.

Council Tax Band 'B' **Energy Performance** Rated 'C'

Viewing by appointment -Irving Geddes on 01764 653771.

Video Tour <https://my.matterport.com/show/?m=J8w45jXodt>



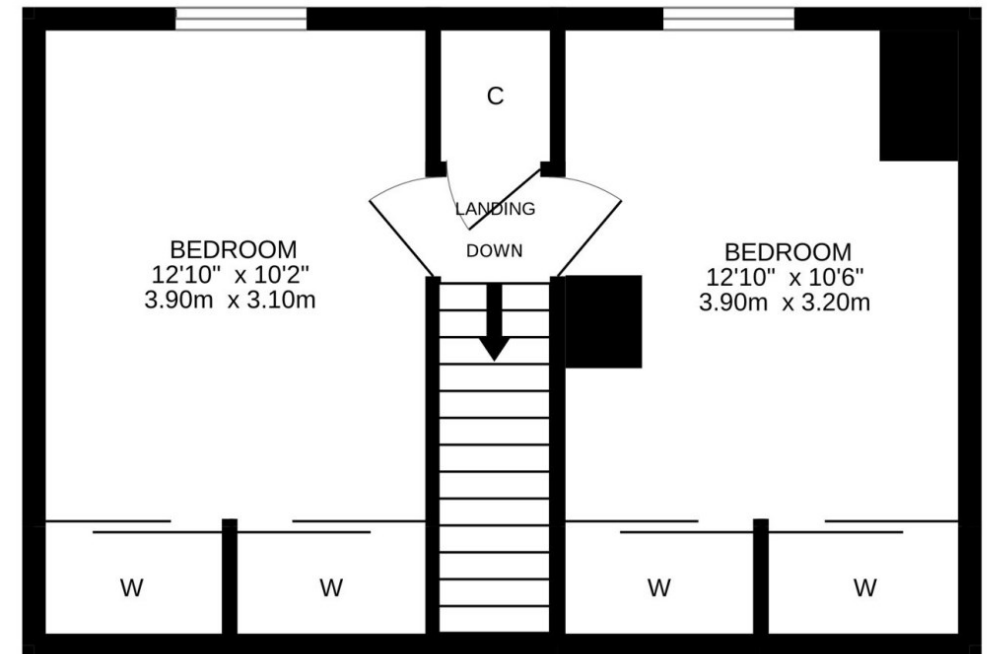
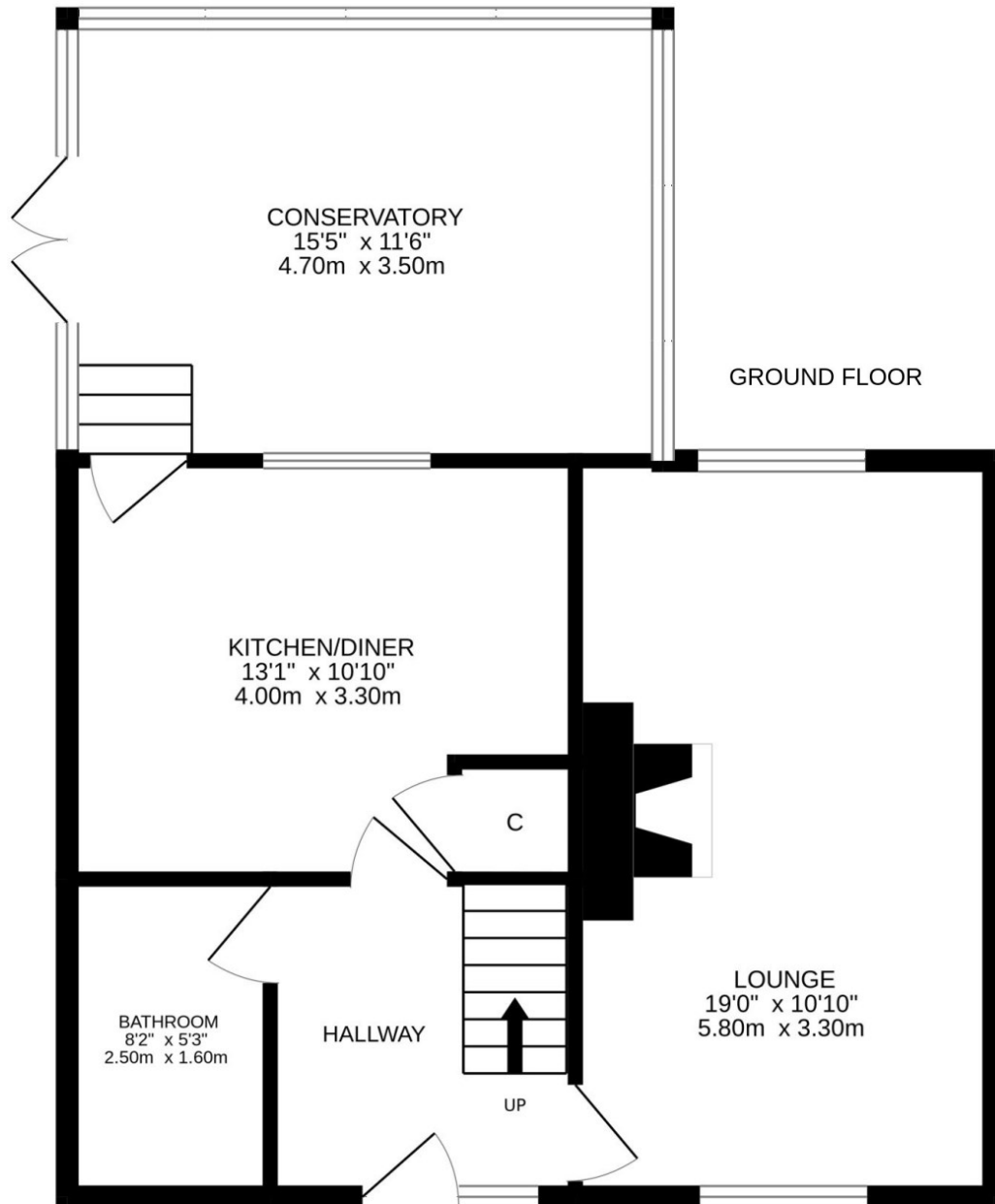








These particulars are believed to be correct, but their accuracy is not guaranteed and they do not form part of any contract. All measurements are approximate only.





Crieff
25 West High Street, PH7 4AU
Tel: 01764 653771

Comrie
1 Drummond Street, PH6 2DW
Tel: 01764 670325

Aberfeldy
6 The Square, PH15 2DD
Tel: 01887 822722