



8 Dutton Court, Dutton Road

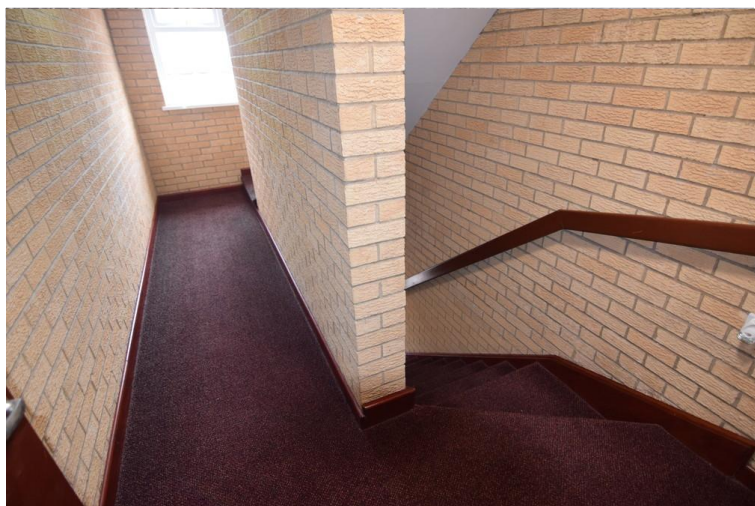
Blackpool, FY3 8DH

- **LOCATED NEAR VICTORIA HOSPITAL**
- **MODERN 2 BEDROOMED APARTMENT**
- **UNDERFLOOR HEATING**
- **ALLOCATED PARKING**

£575 pcm

EPC Rating '78'





Property Description

KITCHEN

8' 47" x 8' 50" (3.63m x 3.71m) MODERN RANGE OF WALL AND BASE UNITS, ELECTRIC HOB AND OVEN, UNDERFLOOR HEATING

LOUNGE

16' 49" x 8' 92" (6.12m x 4.78m) LIGHT AND AIRY LOUNGE WITH ELECTRIC FIRE, UNDERFLOOR HEATING

BEDROOM

9' 51" x 12' 84" (4.04m x 5.79m) DOUBLE GLAZED WINDOW, UNDERFLOOR HEATING

BEDROOM

6' 65" x 12' 44" (3.48m x 4.78m) DOUBLE

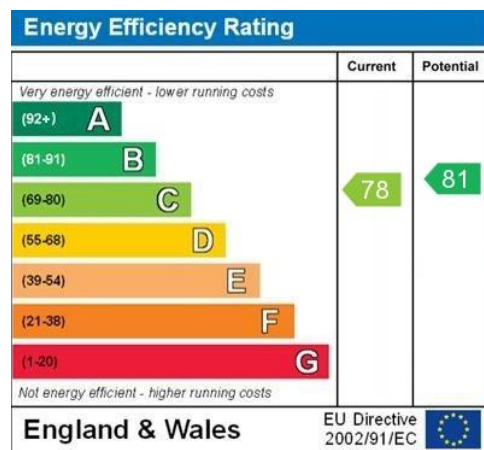


GLAZED WINDOW, UNDERFLOOR HEATING

BATHROOM

6' 06" x 6' 29" (1.98m x 2.57m) MODERN
BATHROOM WITH WHITE SUITE, SHOWER
OVER BATH, UNDERFLOOR HEATING,
DOUBLE GLAZED WINDOW





WWW.EPC4U.COM

21 Counce Street
Blackpool
Lancashire
FY1 3LA

www.moveholmes.co.uk
01253 928200
enquiries@moveholmes.co.uk

Agents Note: Whilst every care has been taken to prepare these sales particulars, they are for guidance purposes only. All measurements are approximate and are for general guidance purposes only and whilst every care has been taken to ensure their accuracy, they should not be relied upon and potential buyers are advised to recheck the measurements