

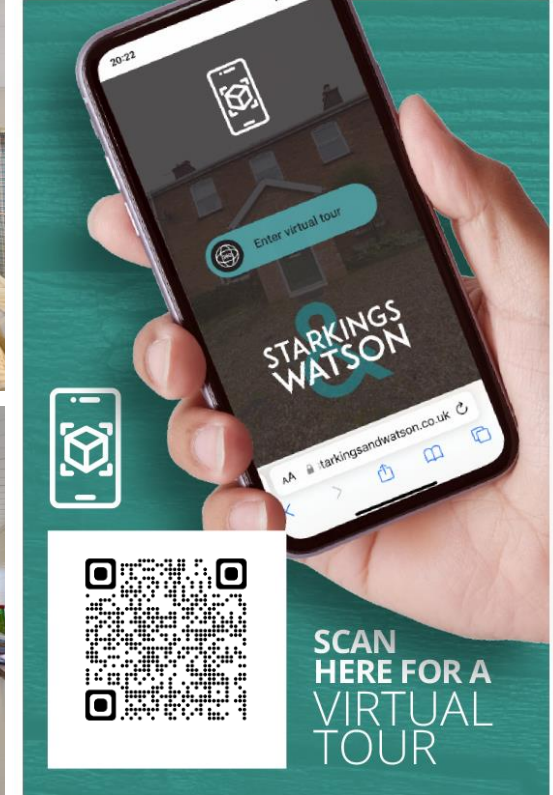
STAITHE ROAD

Burgh St. Peter, Beccles NR34 0DE

Leasehold | Energy Efficiency Rating : TBC

To arrange an accompanied viewing please pop in or call us on 01986 490590

FOR SALE PROPERTY



For our full list of available properties, or for a FREE INSTANT online valuation visit

starkingsandwatson.co.uk



- Holiday Home or Turnkey Investment
- Broadland Views
- Open Plan Living
- On Site Amenities
- Four Bedrooms
- Family Bathroom & En-Suite
- Spacious Terrace
- Off Road Parking

IN SUMMARY

With VIEWS towards the RIVER, this RENOVATED HOLIDAY LODGE offers 12-month occupancy as a second home. Surrounded by some of the Broads' most stunning scenery, the site has been newly acquired by Tingdene Lifestyle, with Waveney River Centre offering an INDOOR HEATED SWIMMING POOL, shop, launderette, play areas and a family friendly pub - The Waveney Inn. Each HOLIDAY LODGE is spacious and built to the highest of specifications, creating an IDEAL HOLIDAY HOME, with FINANCE AVAILABLE with a minimum 20% deposit. A potential TURN KEY INVESTMENT with options under the MANAGED LETTING SCHEME, each property offers OPEN PLAN LIVING, and potential moorings in the marina. Accommodation comprises a PORCH ENTRANCE, open plan sitting room and fitted kitchen, FOUR BEDROOMS, two with EN SUITE and a Jack & Jill family bathroom. A veranda seating area and PARKING can be found outside.

SETTING THE SCENE

To the side there are parking spaces for two cars with a decked walkway leading round the side and the front of the chalet giving access to the main entrance door.

THE GRAND TOUR

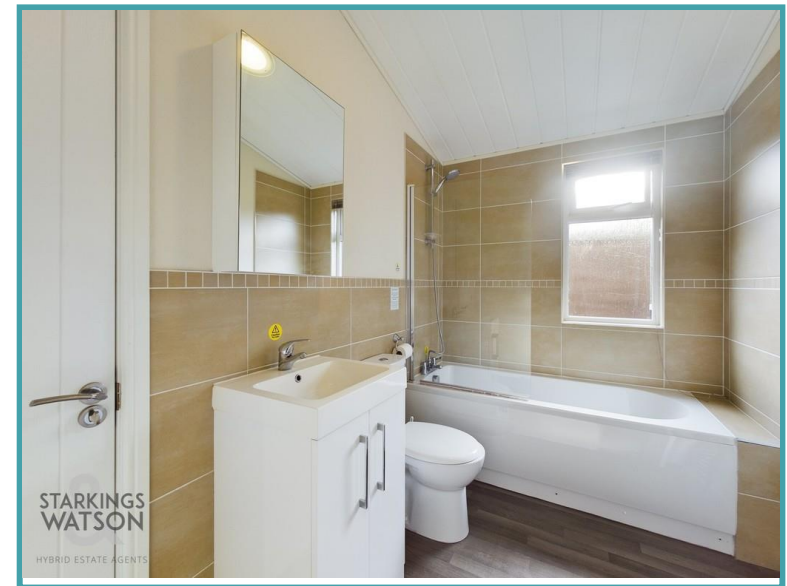
As you step into the lodge you will find an attractive open space which is flooded with natural light from the floor to ceiling windows looking out across the terrace. The space offers a fully fitted kitchen with rolled edge work surfaces, integrated fridge freezer and dishwasher, a spacious dining area and ample space for soft furnishings. To the rear of the lodge you will find four bedrooms - two with en suites, and one with access to the Jack & Jill family bathroom.

THE GREAT OUTDOORS

The property is approached via a decked ramp which leads to the main entrance door.

OUT & ABOUT

The property is located on the Waveney River Centre development, with a range of onsite amenities, whilst being set within the peaceful village of Burgh St Peter, a small rural village close to Aldeby (approximately one mile). The village offers a public house, village hall, post office and farm shop. Some two miles from the Waveney River Centre with swimming pool, public house and restaurant. The market town of Beccles is approximately five miles away and offers a comprehensive range of facilities including road, rail and bus links, along with schooling. The port of Great



To arrange an accompanied viewing please call our Bungay Office on **01986 490590**



Yarmouth is approximately thirteen miles to the east and the City of Norwich some twenty miles to the north west.

FIND US

Postcode : NR34 0DE

What3Words : ///going.unwound.blacken

VIRTUAL TOUR

View our virtual tour for a full 360 degree of the interior of the property.

AGENTS NOTE

The property is offered on a Holiday Home use only, and cannot be an owners main residence. The lease commences for a term of 125 years, with a ground rent of £4000 PA, and utilities as used per quarter. The property is currently part of the Waveney River Centre complex and the overarching business rates - the property will need re-assessing.

Disclaimer: Whilst every care has been taken to prepare these sales particulars, they are for guidance purposes only. All measurements are approximate are for general guidance purposes only and whilst every care has been taken to ensure their accuracy, they should not be relied upon and potential buyers are advised to recheck the measurements.

Price:



For our full list of available properties, or for a FREE INSTANT online valuation visit

starkingsandwatson.co.uk

GIRAFFE 360

While every attempt has been made to ensure accuracy, all measurements are approximate, not to scale. This floor plan is for illustrative purposes only.

(1) Excluding balconies and terraces

Approximate total area (1)
1058.72 ft²
98.36 m²

