



6 Courtstairs Manor, Ramsgate
£650,000

6 Courtstairs Manor

Ramsgate, Ramsgate

*** ONLY 4 APARTMENTS REMAINING ***Sought After Location

View Show HomeReserve NowAPARTMENT 63 Bed / 3.5 Bath / First & Second Floors / Approx. 1665 sq.ftNumber Six is the largest and only duplex apartment, encompassing the whole of the East Wing of the first and available second floors at Courtstairs Manor. Full of period features this unique apartment includes a large vaulted and skylighted entrance hall, a spacious double aspect open plan living space with a Juliet Balcony looking out to sea, two double bedrooms both with en-suites and one with a dressing room.Up the staircase from the hallway there is a third completely self contained large double bedroom with it's own private bath and separate shower.AN OVERVIEWCourtstairs Manor is a unique collection of seven bespoke Manor House apartments and seven contemporary new houses set in private, gated parkland overlooking the Pegwell Bay National Nature Reserve.Each of these beautiful new homes come with integrated kitchen appliances, two designated parking spaces per property with their own dedicated EV charger and an ICW 10 year warranty. The Manor – Set in private parkland grounds with a coastal wild flower meadow edged by Holm Oak Trees, Courtstairs Manor features seven unique apartments in a stunning, yet peaceful sea-side setting.Embracing sea views, the manor apartments have all been individually designed to enhance the original features of the 1875 Manor House, but in a contemporary way.DETAILS A price list, brochure and information sheet are all available upon request.*Please note, the images used maybe of various units within the development.

Tenure: Leasehold

- 10 Year Warranty





First Floor

Hallway

Living Space/Kitchen

Bedroom

En-Suite Shower

WC

Bedroom

Dressing Room

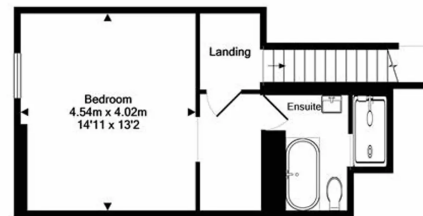
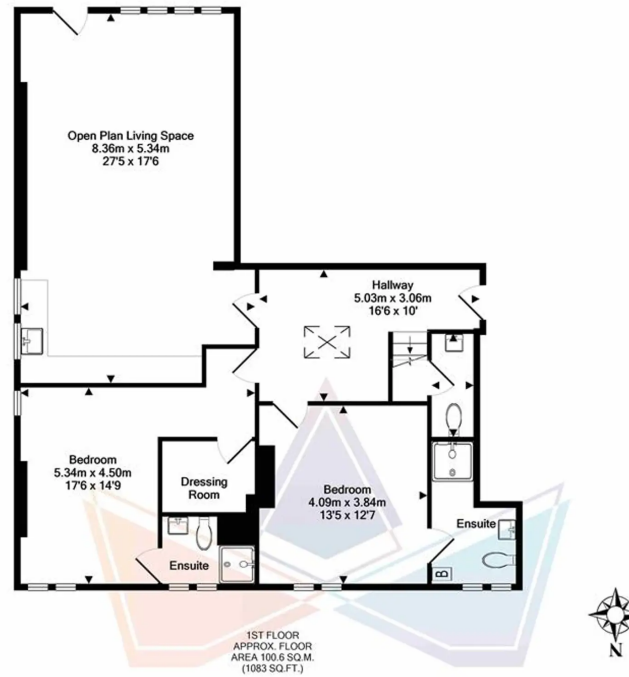
En-Suite Shower

Second Floor

Bedroom

En-Suite Bathroom/Shower





2ND FLOOR
APPROX. FLOOR
AREA 33.7 SQ.M.
(362 SQ.FT.)

TOTAL APPROX. FLOOR AREA 134.2 SQ.M. (1445 SQ.FT.)

Whilst every attempt has been made to ensure the accuracy of the floor plan contained here, measurements of doors, windows, rooms and any other items are approximate and no responsibility is taken for any error, omission, or mis-statement. This plan is for illustrative purposes only and should be used as such by any prospective purchaser. The services, systems and appliances shown have not been tested and no guarantee as to their operability or efficiency can be given.
Made with Metropix ©2022

Miles & Barr

51 Queen Street, Kent - CT11 9EJ

01843 570 500

ramsgate@milesandbarr.co.uk

<http://www.milesandbarr.co.uk>

We have not carried out a structural survey, appliances & services are untested, dimensions are approximate, floor plans are not to scale. Legal advice should be taken to verify fixtures/fittings/planning/alterations and/or lease details before proceeding. On acceptance of an offer, purchasers must undertake ID checks; this is a legal requirement in accordance with Anti Money Laundering Regulations. We use a specialist company, Lifetime Legal and the cost is £60 inc VAT per purchase, paid directly to Lifetime Legal, once offer agreed and prior to issuing sales memorandum. This Charge is non-refundable For Referral Fee Disclosure visit: milesandbarr.co.uk/referral-fee-disclosure