



34 Redsull Avenue, Deal

Guide Price **£230,000**



34 Redsull Avenue

Deal, Deal

For sale by Modern Method of Auction; Starting Bid Price £230,000 plus Reservation Fee. Miles and Barr are delighted to introduce this three bed end-of-terrace property that offers an exciting opportunity for those looking to renovate and make it their own. With three spacious bedrooms, there is plenty of room for a growing family or guests. The property has a generous living room and separate kitchen dining area, perfect for entertaining or just relaxing with loved ones. One of the key features of this property is its location. Situated just a short distance from all the essential amenities, you will have everything you need right on your doorstep. Whether you need to run errands, grab some groceries, or enjoy a night out with friends, everything is within easy reach. While the property is in need of refurbishment, it presents a blank canvas for those with a vision. With a little bit of love and attention, this property has the potential to be transformed into a stunning home that truly reflects your style and personality. So if you're looking for a property that offers both location and potential, this end-of-terrace is the perfect opportunity for you! To arrange your viewing please contact Miles and Barr Deal today! This property is for sale by "Regional Auction name powered by iamsold Ltd" or "iamsold Ltd"

- Three Bedroom End Of Terrace
- Potential For Parking
- Bright Spacious Rooms
- Lovley Large Garden
- Fair Condition Throughout





Rear Garden

Exterior

Bathroom

Dimensions: 2.3 / 1.6 (7'6" / 5'2").

Bedroom Two

Dimensions: 3.0 / 2.5 (9'10" / 8'2").

Lounge

Dimensions: 3.4 / 4.4 (11'1" / 14'5").

WC

First Floor

Entrance Hall

Bedroom Three

Dimensions: 2.1 / 2.4 (6'10" / 7'10").

Kitchen Diner

Dimensions: 2.3 / 4.4 (7'6" / 14'5").

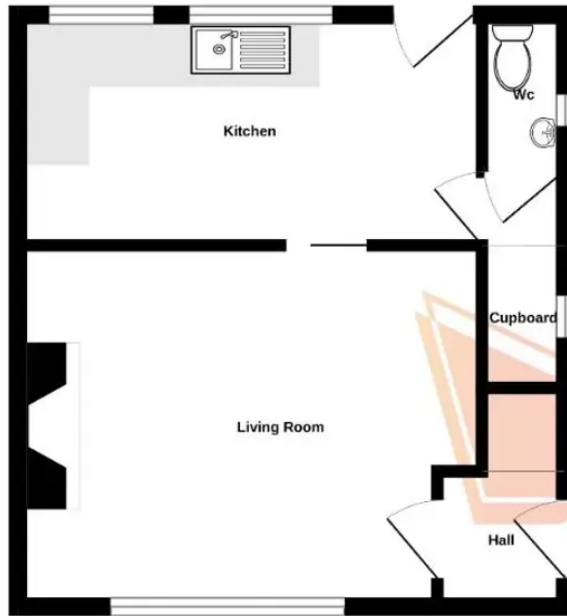
Entrance

Bedroom One

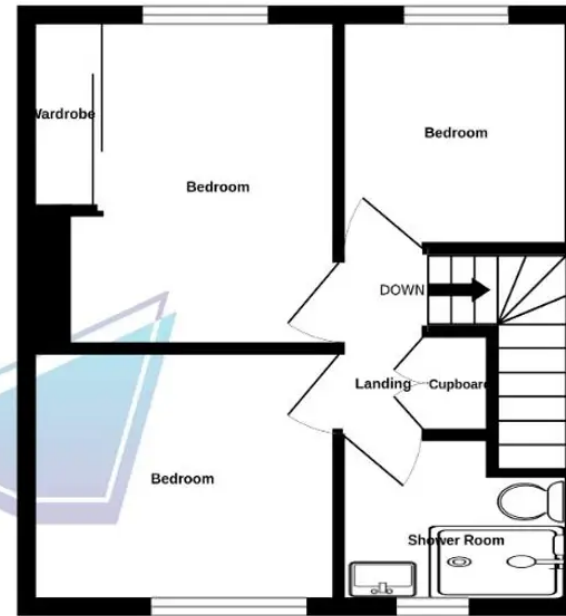
Dimensions: 3.2 / 2.4 (10'5" / 7'10").



GROUND FLOOR
29.1 sq.m. (313 sq.ft.) approx.



1ST FLOOR
29.6 sq.m. (318 sq.ft.) approx.



TOTAL FLOOR AREA : 58.6 sq.m. (631 sq.ft.) approx.

Whilst every attempt has been made to ensure the accuracy of the floorplan contained here, measurements of doors, windows, rooms and any other items are approximate and no responsibility is taken for any error, omission or mis-statement. This plan is for illustrative purposes only and should be used as such by any prospective purchaser. The services, systems and appliances shown have not been tested and no guarantee as to their operability or efficiency can be given.
Made with Metropix ©2023



Miles and Barr

30 Queen Street, Deal - CT14 6ET

01304 800 555

deal@milesandbarr.co.uk

www.milesandbarr.co.uk/

We have not carried out a structural survey, appliances & services are untested, dimensions are approximate, floor plans are not to scale. Legal advice should be taken to verify fixtures/fittings/planning/alterations and/or lease details before proceeding. On acceptance of an offer, purchasers must undertake ID checks; this is a legal requirement in accordance with Anti Money Laundering Regulations. We use a specialist company, Lifetime Legal and the cost is £60 inc VAT per purchase, paid directly to Lifetime Legal, once offer agreed and prior to issuing sales memorandum. This Charge is non-refundable For Referral Fee Disclosure visit: milesandbarr.co.uk/referral-fee-disclosure