



56 Highgrove Road, Baffins

Portsmouth

Offers in Region of £310,000





56 Highgrove Road

Baffins, Portsmouth

This is a great family home with an upgrade opportunity and a convenient location on Highgrove Road. Easy access to the Eastern Road, amenities on Tangier Road, recreational facilities in Tangier Park, Great Salterns and Milton Common and within the ALNS catchment, this house has everything for the family.

Original features start at the front door and continue throughout the house. The hallway, light and bright has an understairs cupboard and hanging space for coats. The front reception with a square bay has a feature fireplace, the rear reception has stained glass above the French door into the sunroom, original fire surround and both rooms have the original ceiling rose. The sunroom has sliding patio doors to the garden and access to the kitchen. The modern kitchen has a selection of wall and base units in wood shaker style with integrated appliances; curved units and a beautifully shaped wooden worktop make the most of the space in the room.

There are two double bedrooms and a single room upstairs. Both double rooms have the original cast iron fireplaces and built in wardrobes. The single room is to the front and the bathroom to the rear has a modern white suite shower suite with semi recessed sink and toilet.

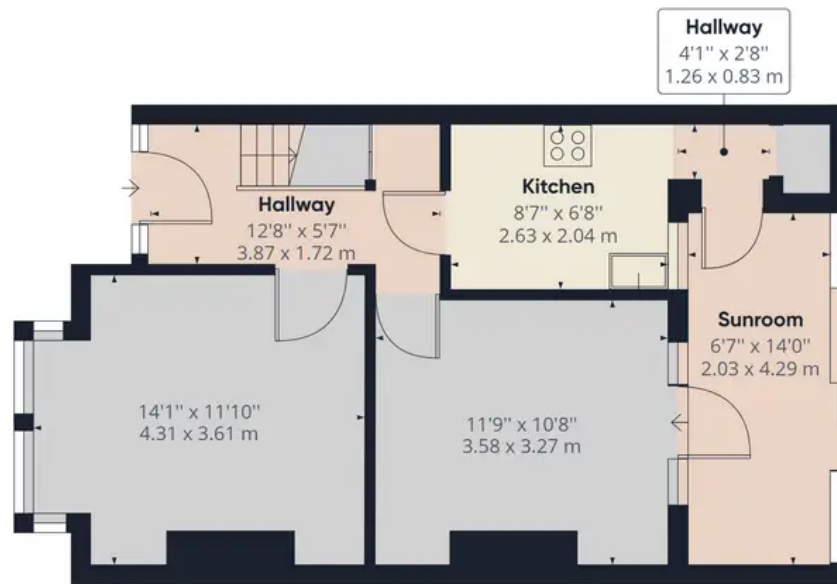
The easterly facing garden is mainly laid to lawn with side planting, a shed for storage at the back and a rear pedestrian access and garage potential.

This is a house that has a wonderful family feel and is waiting for a new family to make it their own. A wonderful opportunity to upgrade the interior and create a modern contemporary home.

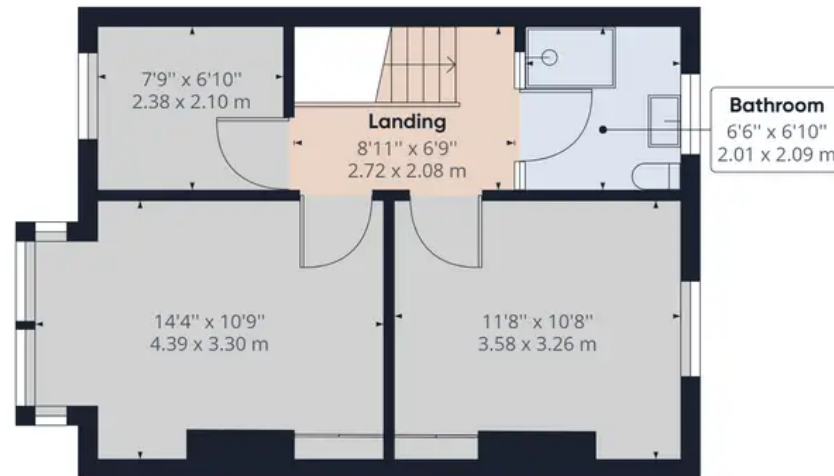
Council Tax band: C

Tenure: Freehold





Ground Floor



Floor 1

Approximate total area⁽¹⁾

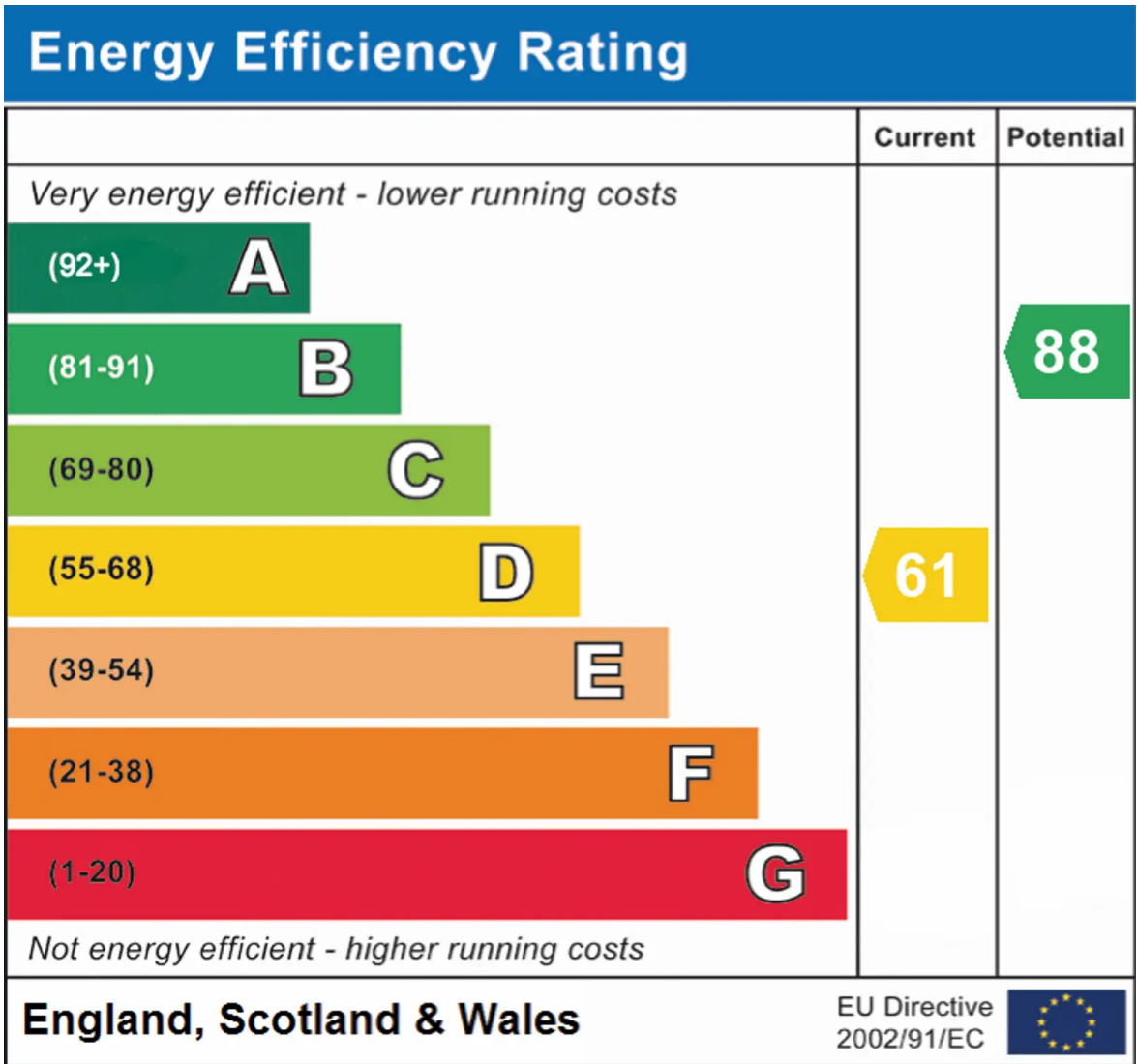
949.04 ft²

88.17 m²

(1) Excluding balconies and terraces

While every attempt has been made to ensure accuracy, all measurements are approximate, not to scale. This floor plan is for illustrative purposes only.

GIRAFFE 360



Chinneck Shaw

Bridge House, Milton Road, Portsmouth – PO3 6AN

023 9282 6731

hello@chinneckshaw.co.uk

www.chinneckshaw.co.uk/

Chinneck Shaw, Bridge House, Milton Road, PO3 6AN Consumer Protection from Unfair Trading Regulations 2008: These details are for guidance only and complete accuracy cannot be guaranteed. If there is any point which is of particular importance, verification should be obtained. The do not constitute a contract or part of a contract. All measurements are approximate. No guarantee can be given with regard to planning permissions or fitness for purpose. No apparatus, equipment, fixture or fitting has been tested. Items shown in the photographs are NOT necessarily included. Interested Parties are advised to check availability and make an appointment to view before travelling to see a property.