



11 Domum Road, Copnor

Portsmouth

Offers in Region of £340,000

 chinneckshaw



# 11 Domum Road

Copnor, Portsmouth

Located on the northern part of Portsea Island, this nicely presented property has plenty of space whether for family or friends. The M27 and recreational/nature facilities at Hilsea Lines are only 5 minutes' drive away and amenities are local on Copnor Road.

The original door with beautiful stained-glass windows provides a feature entrance to the property. The hallway is light and bright with storage and hanging space under the stairs. To the left is the large reception room with a square bay to the front and to the rear a feature fireplace and double patio doors out to the garden. At the end of the hallway is the kitchen, galley style with space for cooker, washing machine and fridge freezer. At the rear of the kitchen with views to the garden is a dining area.

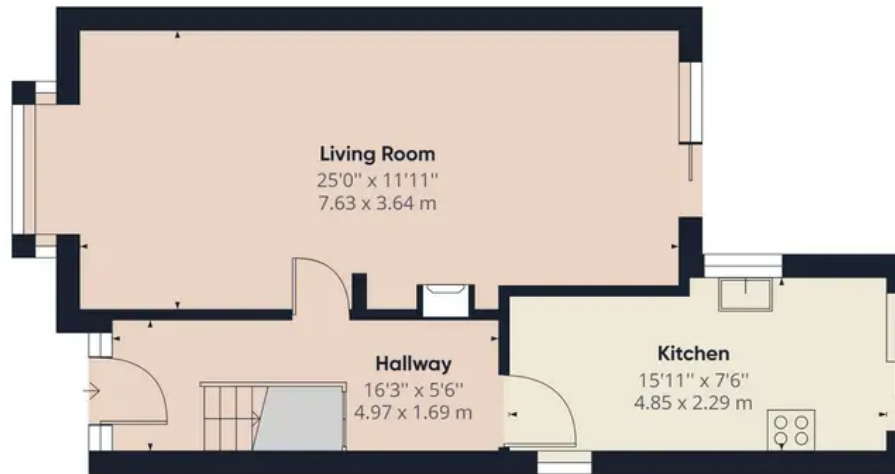
The large south facing garden has a side pedestrian access, a patio and lawn with bedding along the sides. To the rear is a shed. A further paved area towards the back would be a perfect position for a firepit.

Upstairs are three double rooms. To the rear is a small double but with the benefit of a shower and basin, great for guests. Adjacent also with views over the garden is a large double with built in wardrobe and shelving. To the front is the principal bedroom with a square bay and large built in wardrobe. The family bathroom also to the front has an elegant white suite with white décor. This is a delightful family home, ready to be moved into and with a little updating could be transformed into a contemporary home.

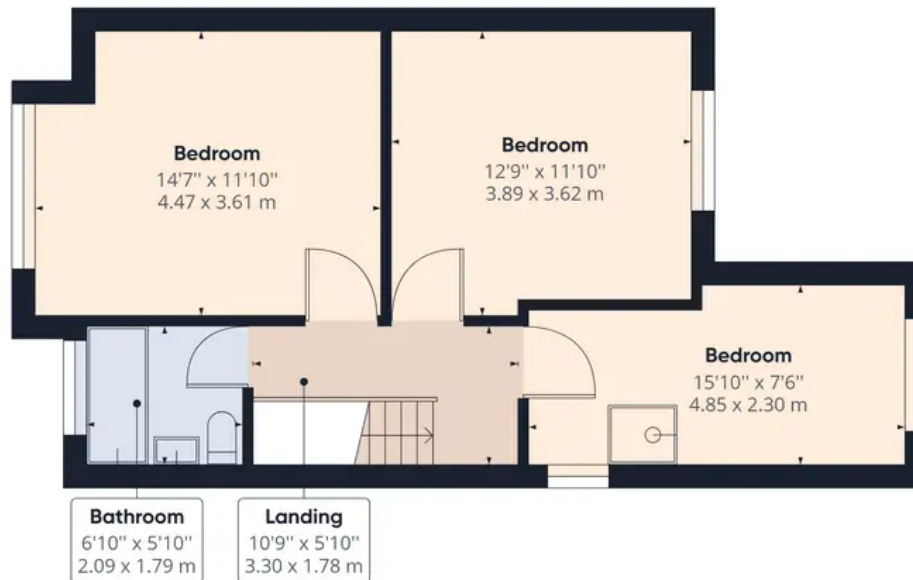
Council Tax band: C

Tenure: Freehold





Ground Floor



Floor 1

Approximate total area<sup>(1)</sup>

1046.10 ft<sup>2</sup>

97.19 m<sup>2</sup>

(1) Excluding balconies and terraces

While every attempt has been made to ensure accuracy, all measurements are approximate, not to scale. This floor plan is for illustrative purposes only.

GIRAFFE 360



## Chinneck Shaw

Bridge House, Milton Road, Portsmouth – PO3 6AN

023 9282 6731

[hello@chinneckshaw.co.uk](mailto:hello@chinneckshaw.co.uk)

[www.chinneckshaw.co.uk/](http://www.chinneckshaw.co.uk/)

Chinneck Shaw, Bridge House, Milton Road, PO3 6AN Consumer Protection from Unfair Trading Regulations 2008: These details are for guidance only and complete accuracy cannot be guaranteed. If there is any point which is of particular importance, verification should be obtained. They do not constitute a contract or part of a contract. All measurements are approximate. No guarantee can be given with regard to planning permissions or fitness for purpose. No apparatus, equipment, fixture or fitting has been tested. Items shown in the photographs are NOT necessarily included. Interested Parties are advised to check availability and make an appointment to view before travelling to see a property.