



WEST HEATH ROAD

HAMPSTEAD NW3

A DECEPTIVELY SPACIOUS, 5 BEDROOM FAMILY HOUSE LOCATED MOMENTS FROM HAMPSTEAD HEATH AND UNDER 1 MILE FROM HAMPSTEAD HIGH STREET.



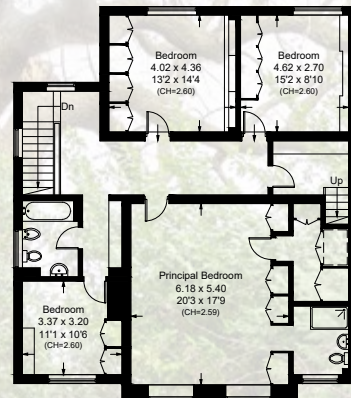
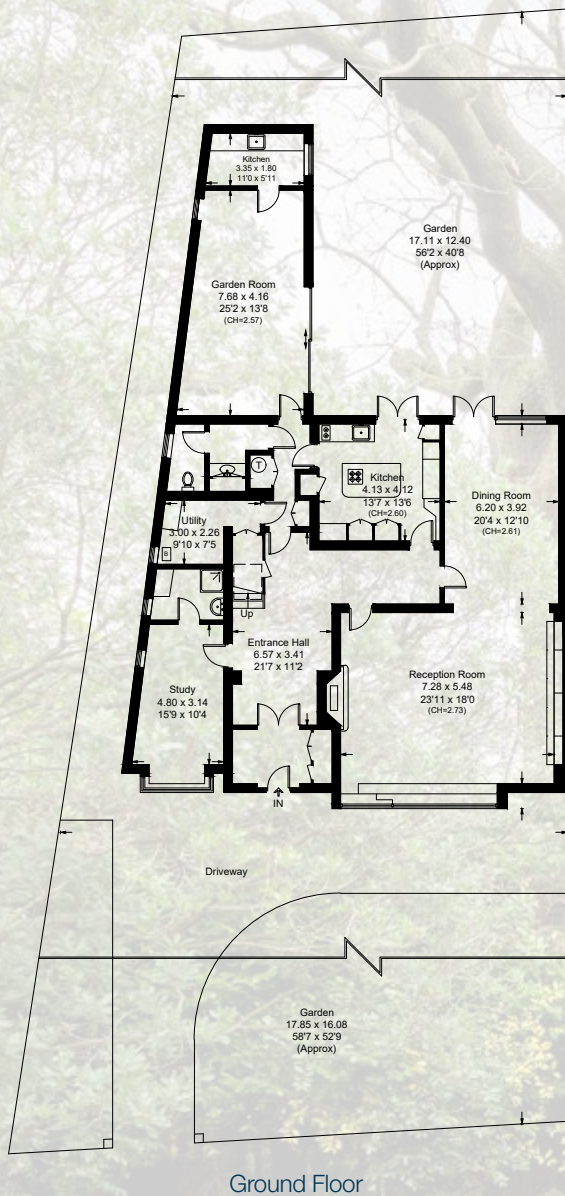




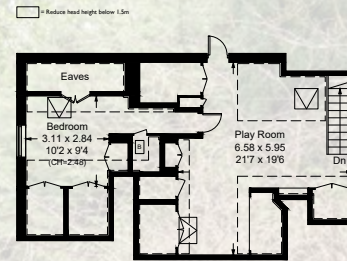


APPROXIMATE GROSS INTERNAL AREA
410.7 SQ_M / 4,421 SQ_FT

INCLUDING LIMITED USE AREA
(39.2 SQ_M / 422 SQ_FT)



First Floor



Second Floor



ACCOMMODATION & AMENITIES

- ENTRANCE VESTIBULE • RECEPTION HALL
- DRAWING ROOM • DINING ROOM • KITCHEN BREAKFAST ROOM • STUDY WITH ENSUITE SHOWER ROOM
- GARDEN ROOM • GUEST CLOAKROOM • UTILITY ROOM
- PRINCIPAL BEDROOM WITH EN SUITE BATHROOM AND DRESSING ROOM • FOUR FURTHER BEDROOMS • FAMILY BATHROOM • PLAYROOM • SECLUDED REAR GARDEN
- OFF STREET PARKING FOR 4 TO 5 CARS.

FREEHOLD

SOLE AGENTS

PRICE ON APPLICATION

**MARCUS
PARFITT**

RESIDENTIAL SALES & ACQUISITIONS

020 7431 0000

28 Church Row, Hampstead, London NW3 6UP
email: info@marcusparfitt.com www.marcusparfitt.com

