



Georgian Grade II Listed House
£5,000 per calendar month

Situated between Canary Wharf and the City, steps from several transport links including the Elizabeth Line is this Georgian end of terrace house, finished to an exceptional standard boasting original period features: floorboards, fireplace, ceiling coving, sash windows and much more. Comprising three double bedrooms, kitchen/diner, two bathrooms and reception room overlooking Sidney Square.

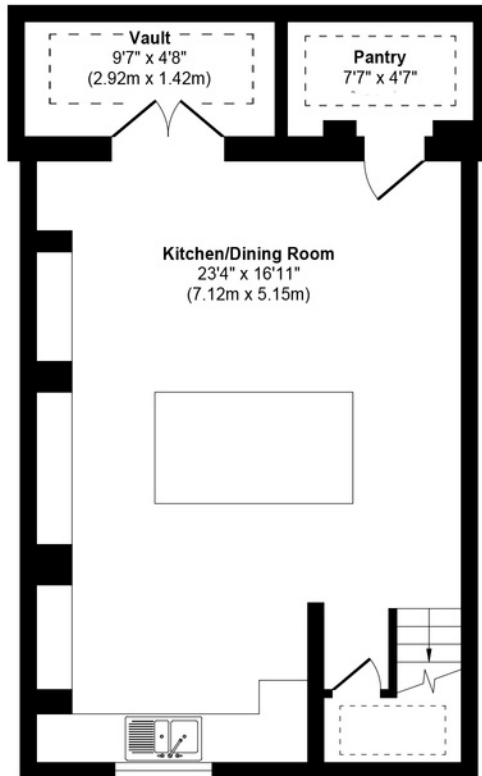
- Grade II Listed Georgian House
- Original Period Features
- Three Double Bedrooms
- Marble Bathroom
- Range Cooker
- Larder Room
- West Facing Garden
- Overlooking Sidney Square

Council Tax Band F
EPC Rating D (64)
Borough: Tower Hamlets

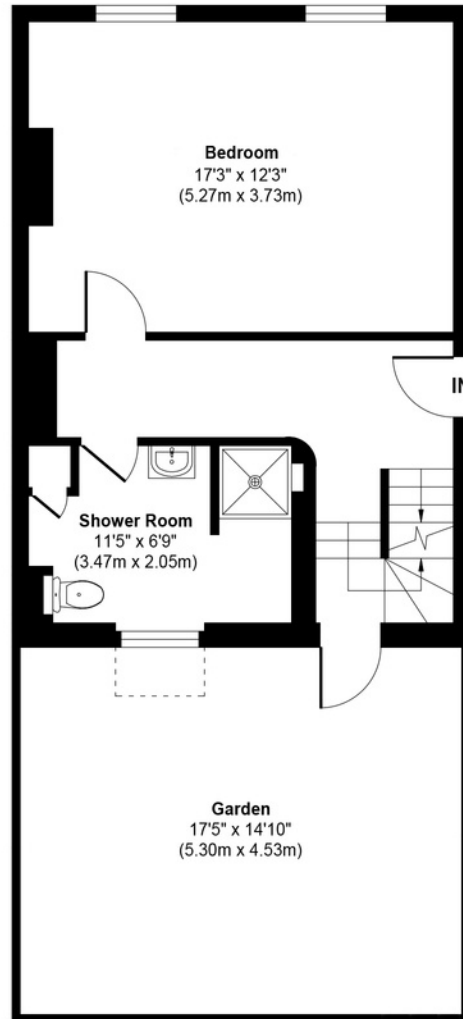
Viewings by appointment only
info@netlettings.com
0208 981 5551



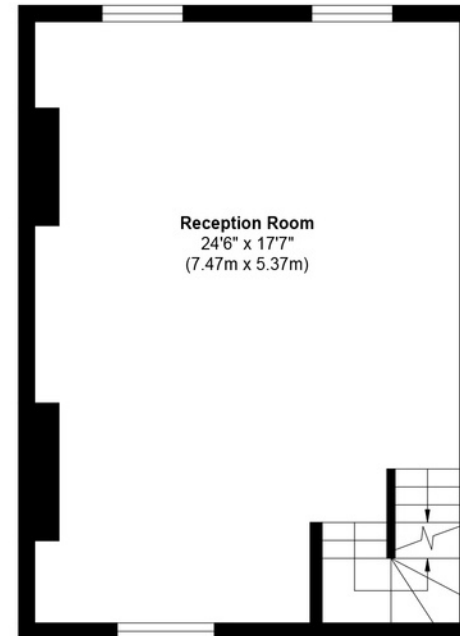
Sidney Square



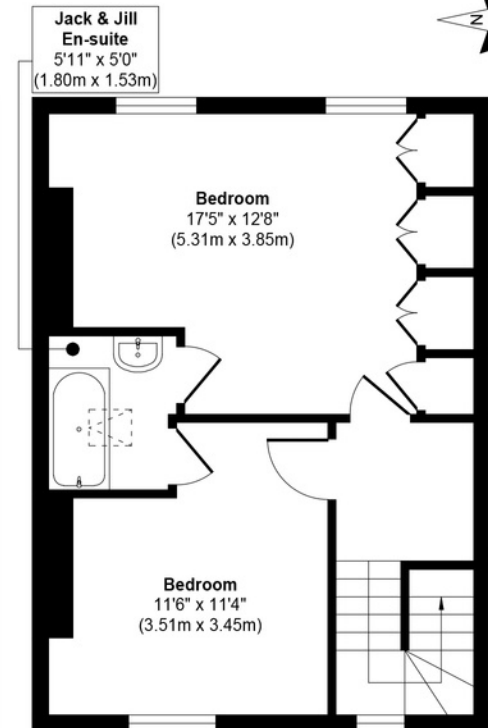
Lower Ground Floor
Approximate Floor Area
520 sq. ft
(48.37 sq. m)



Ground Floor
Approximate Floor Area
419 sq. ft
(38.95 sq. m)



First Floor
Approximate Floor Area
419 sq. ft
(38.95 sq. m)



Second Floor
Approximate Floor Area
419 sq. ft
(38.95 sq. m)

Approx. Gross Internal Floor Area 1777 sq. ft / 165.22 sq. m

Illustration for identification purposes only, measurements are approximate, not to scale.

Produced by Elements Property

Location & Transport

- 🚶 38 mins walk to Canary Wharf
- 🚶 28 mins walk to Liverpool Street
- 🚶 33 mins walk to Bank

- 🚇 Whitechapel Underground - 0.4 miles | 9 mins walk
- 🚇 Stepney Green Underground - 0.7 miles | 15 mins walk
- 🚇 Shadwell DLR - 0.4 miles | 9 mins walk

- 🚌 17 mins to Liverpool Street - Watney Market (Stop E)
- 🚌 31 mins to Bank - Sidney Street (Stop F)
- 🚌 17 mins to Canary Wharf - Watney Market (Stop E)

