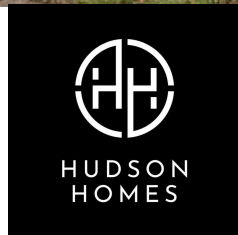




**4 Vicarage Close, Holme**  
Peterborough



**£500,000**



## 4 Vicarage Close

Holme, Peterborough

Welcome to Vicarage Close, Holme, Peterborough – a stunning detached family home in a beautiful village location. This property offers a fantastic opportunity to live in a quiet and peaceful cul de sac with excellent transport links.

Located in the quaint village of Holme, this property is just a short distance away from the local shops and amenities such as pubs, restaurants, cafes, supermarkets and more. It is also within easy reach of the city centre of Peterborough, providing excellent transport links to London and beyond. There are numerous parks nearby, as well as plenty of walking trails to explore the local countryside. Holme also has excellent schools within walking distance, making this an ideal home for families.

Overall, this extended detached family home in Vicarage Close provides an idyllic setting to call home – so don't miss out on this opportunity – contact us today to arrange a viewing!

Council Tax band: D

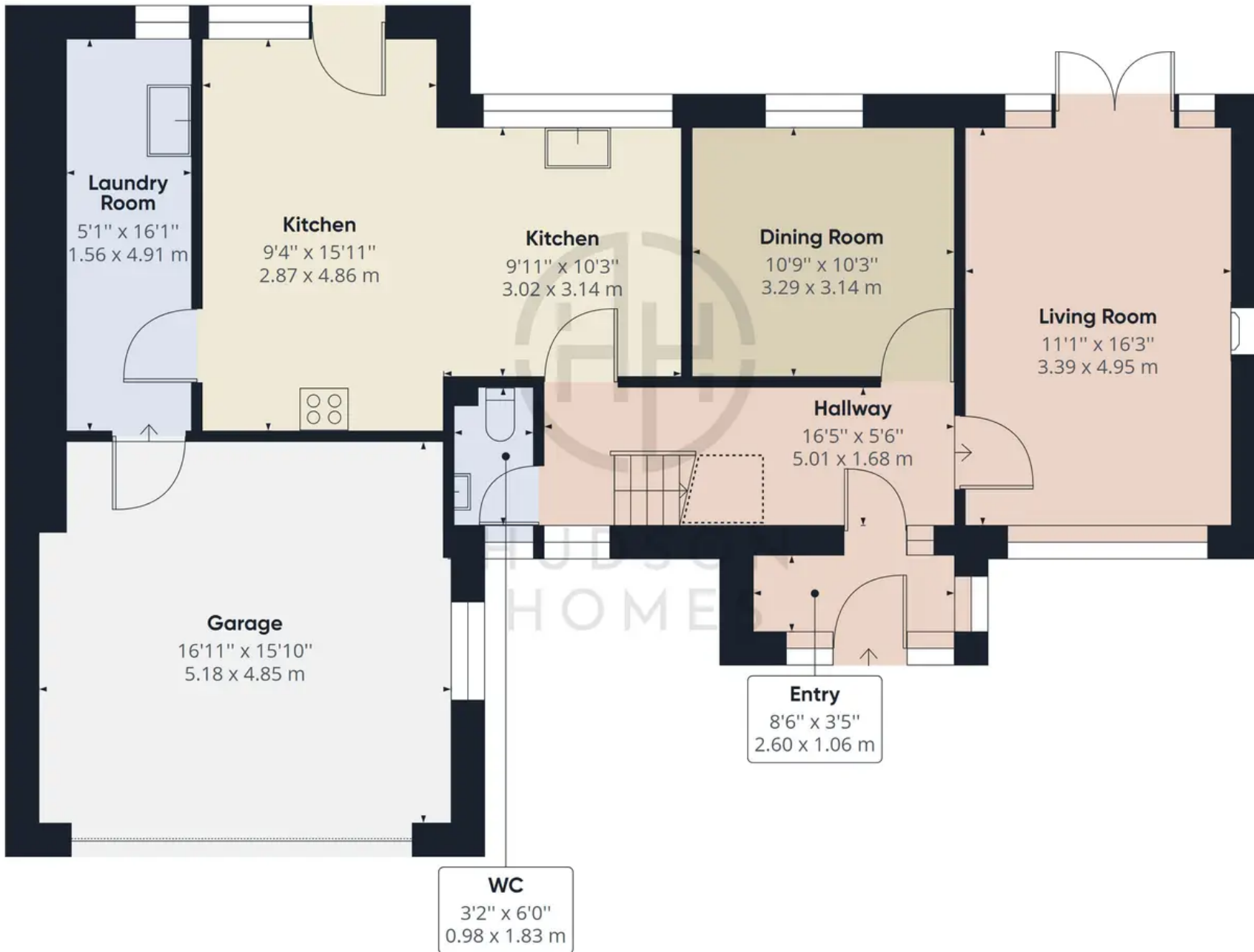
Tenure: Freehold







HUDSON  
HOMES



**Approximate total area<sup>(1)</sup>**

1058.70 ft<sup>2</sup>  
98.36 m<sup>2</sup>

**Reduced headroom**

13.03 ft<sup>2</sup>  
1.21 m<sup>2</sup>

(1) Excluding balconies and terraces

Reduced headroom  
(below 1.5m/4.92ft)

While every attempt has been made to ensure accuracy, all measurements are approximate, not to scale. This floor plan is for illustrative purposes only.

**GIRAFFE 360**

**Floor 0**



## Hudson Homes Estate Agents

122A Main Street, Yaxley - PE7 3LP

01733 788222

[info@hudson-homes.co.uk](mailto:info@hudson-homes.co.uk)

[www.hudson-homes.co.uk/](http://www.hudson-homes.co.uk/)

