



Flat 116, Warren House, Beckford Close, Warwick Road,
London, W14 8TW



Underground secure parking | Balcony | 24 hour Concierge | South facing | Resident gym | 8 mins walk to Earls Court Station | Short Walk to Kensington High Street

DESCRIPTION

A south-west facing apartment on the 6th floor (with lift) of a well maintained purpose-built building in Kensington. The property boasts a south-west facing reception with balcony, two double bedrooms with built-in storage, walk-in wardrobe, en-suite shower room, a family bathroom and a fully equipped kitchen.

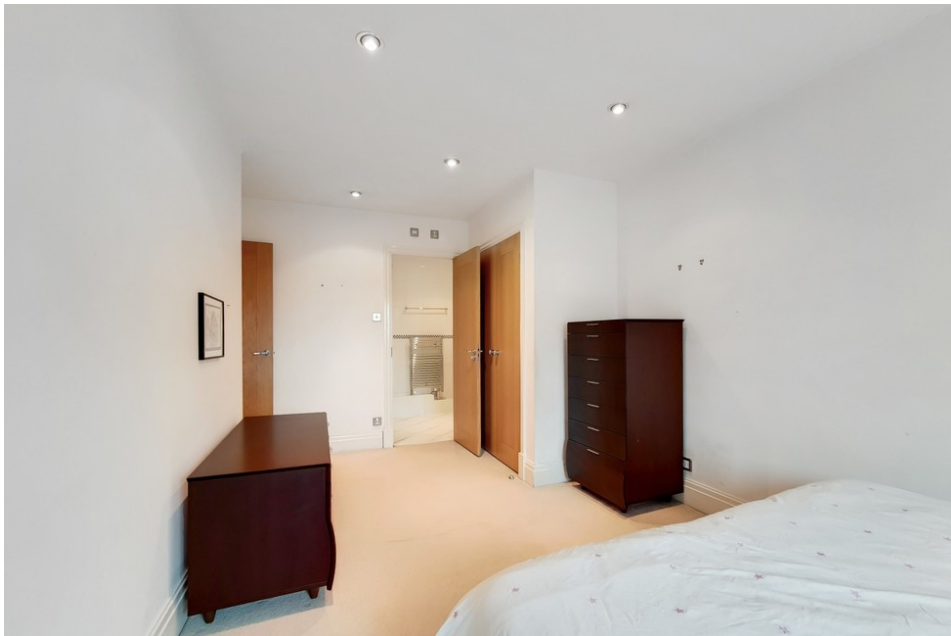
The property benefits from wooden flooring throughout, a 24 hour concierge service, secure underground parking and a residents gym. Ideally situated close to all the amenities of High Street Kensington and Earl's Court.

KEY FEATURES

- Underground secure parking
- Balcony
- 24 hour Concierge
- South facing
- Resident gym
- 8 mins walk to Earls Court Station
- Short Walk to Kensington High Street







Energy efficiency rating for this property

This property's current energy rating is C. It has the potential to be B.

[See how to improve this property's energy performance.](#)

Score	Energy rating	Current	Potential
92+	A		
81-91	B		81 B
69-80	C	78 c	
55-68	D		
39-54	E		
21-38	F		
1-20	G		

ADDITIONAL INFORMATION

Tenure: Leasehold

Local Authority: Kensington and Chelsea Royal

Borough Council

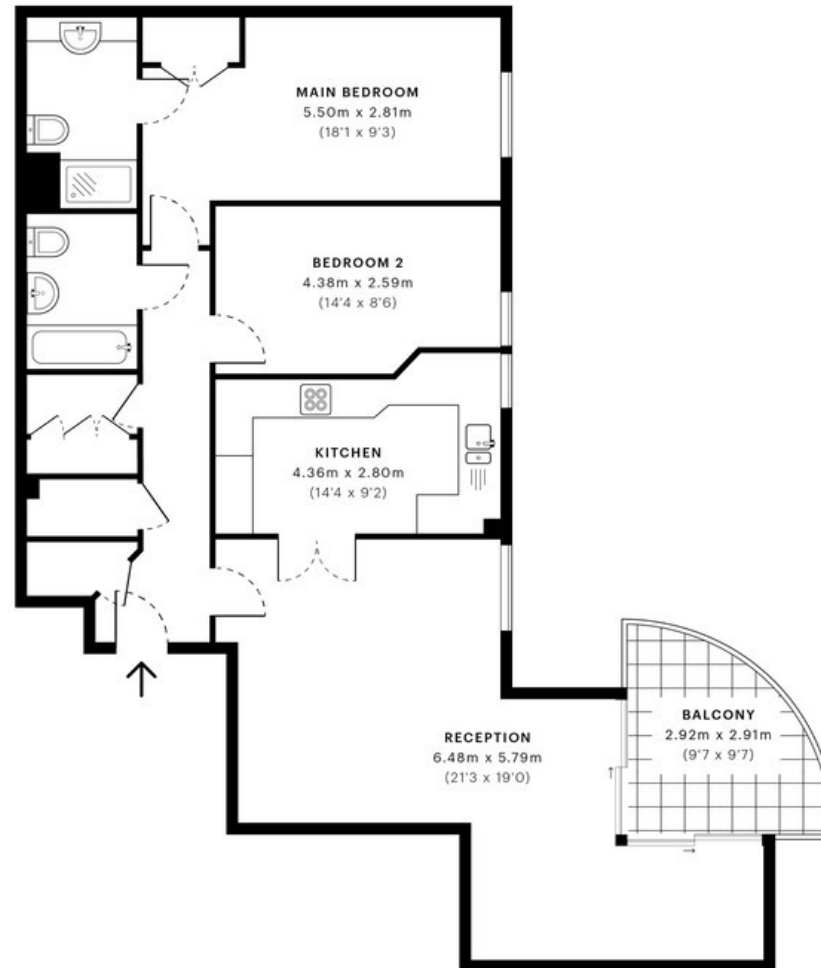


Warren House, W14

CAPTURE DATE 07/03/2023 LASER SCAN POINTS 51,273,909

GROSS INTERNAL AREA

92.26 sqm / 993.08 sqft



— Seventh Floor