



♥ 2 Bedroom Ground Floor Apartment Offers Over £130,000  
32 Marbeck Close, Redhouse , Swindon, Wiltshire, SN25 2LT

mcfarlane  
property.com



## 2 Bedroom Ground Floor Apartment North Swindon

- NO ONWARD CHAIN
- TWO BEDROOMS
- FANTASTIC FIRST TIME BUY / INVESTMENT
- EN-SUITE TO MASTER

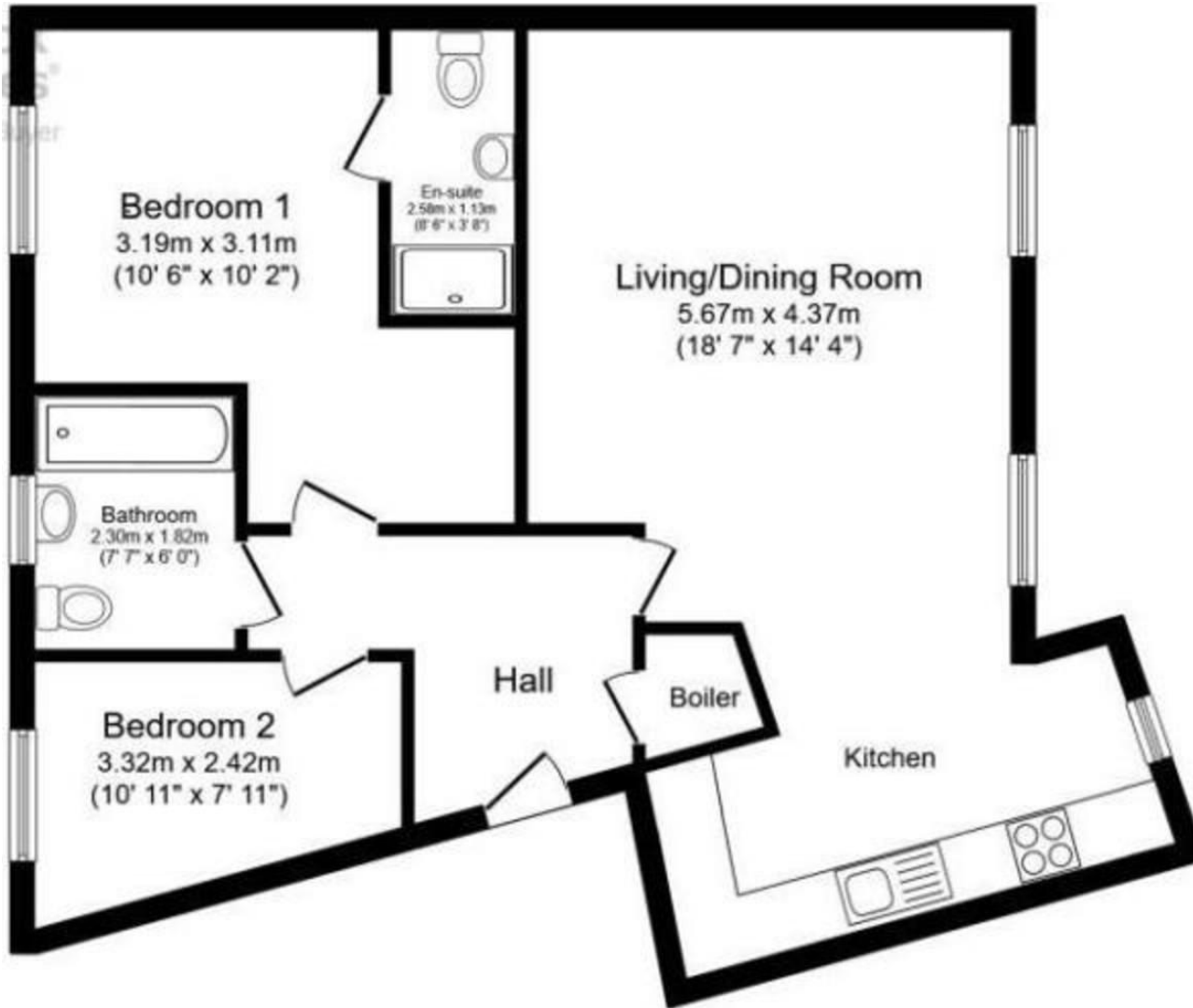
FANTASTIC FIRST TIME BUY / INVESTMENT  
- NO ONWARD CHAIN - GROUND FLOOR  
APARTMENT - TWO BEDROOMS - MASTER  
WITH ENSUITE - ALLOCATED PARKING -  
POPULAR LOCATION

McFarlane are pleased to offer this spacious ground floor apartment to the market in the sought after area of Redhouse, North Swindon. The accommodation briefly comprises; entrance hall, large open plan living/dining room and kitchen complete with breakfast bar. There are two bedrooms, master benefitting from an ensuite and a further good size family bathroom suite. Externally the property offers one allocated parking space with ample visitor spaces. Further benefits include double glazing and NO ONWARD CHAIN! Positioned close to shops, schools and numerous play parks with the added benefit of great transport links, this fantastic apartment must be viewed. Guide Price £130,000 - £140,000.









We   
 where you  
**LIVE**

Our team are friendly, experienced and are all local. They know it better than they do their own living rooms and can help you find what you're looking for because **we love where we live.**

We would be delighted to show you around this property.

**Because every home needs a personal touch.**

**If you would like to view this property then please get in touch.**

 01793 296600

 [swindon@mcfarlaneproperty.com](mailto:swindon@mcfarlaneproperty.com)

[mcfarlaneproperty.com](http://mcfarlaneproperty.com)

**mcfarlane**  
 property.com

**Cricklade.**  
 102 High Street  
 Cricklade SN6 6AA  
 01793 751044

**Marlborough.**  
 106 High Street  
 Marlborough SN8 1LT  
 01672 514380

**Old Town.**  
 28-30 Wood Street  
 Swindon SN1 4AB  
 01793 296880

**Swindon.**  
 The Village Centre,  
 Redhouse SN25 2FW  
 01793 296600

Agents Note: Whilst every care has been taken to prepare these sales particulars, they are for guidance purposes only. All measurements are approximate are for general guidance purposes only and whilst every care has been taken to ensure their accuracy, they should not be relied upon and potential buyers are advised to recheck the measurements