



Stour Park , New Road , Bournemouth



## **Stour Park , New Road , Bournemouth**

**Asking Price: £237,500**

Corbin & Co are pleased to offer for sale this immaculately presented bright and airy home which is situated on a popular residential site close to local shops, amenities, bus routes, and riverside walks in Northbourne. The main selling feature of this park home, is the fantastic garden, one of the large plots on the site which has been well maintained and kept by the current owner.

This home offers spacious accommodation and comprises of entrance hall with built in storage cupboards, a large dual aspect lounge with feature fireplace, separate dining room, good sized kitchen with utility room, two double bedrooms both with built in wardrobes, and the main benefiting from an en suite bathroom. There is also a shower room.

To the front a block paved driveway providing off road parking. At the rear, a well maintained rear garden mostly laid to a large patio area with flower bed borders and mature plants, hedges and access to a good sized shed with power.

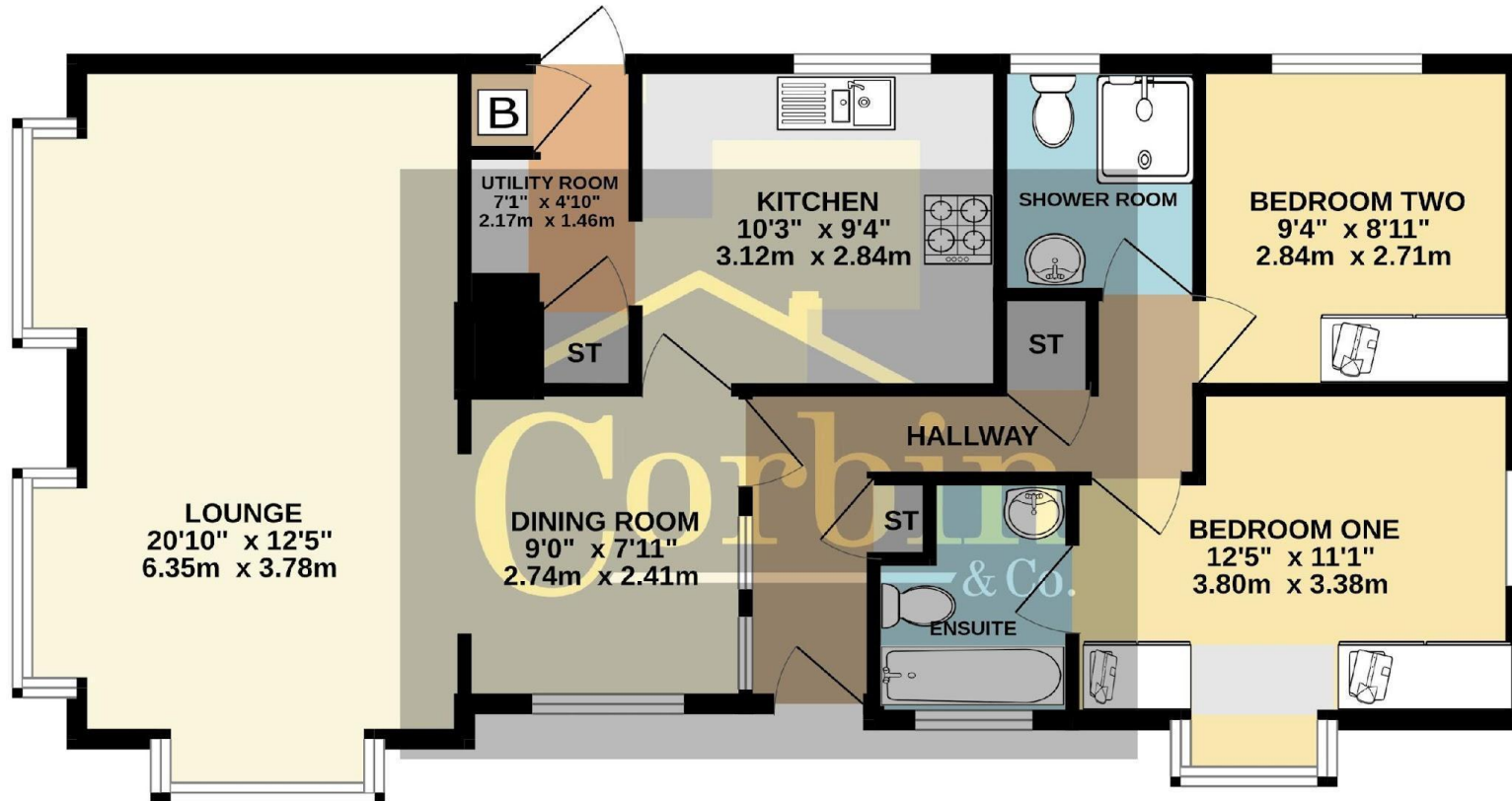
Age Restriction 60+ No Pets Allowed.

Pitch Fee approx. £183.80 per calendar month (Plus £9 water charge)

To arrange a viewing please call 01202 519761.

Corbin & Co , 1567-1569 Wimborne Road, Bournemouth, Dorset, BH10 7BB | 01202 519761  
sales@corbinandco.com | www.corbinandco.com

GROUND FLOOR  
787 sq.ft. (73.1 sq.m.) approx.



TOTAL FLOOR AREA : 787 sq.ft. (73.1 sq.m.) approx.

Whilst every attempt has been made to ensure the accuracy of the floorplan contained here, measurements of doors, windows, rooms and any other items are approximate and no responsibility is taken for any error, omission or mis-statement. This plan is for illustrative purposes only and should be used as such by any prospective purchaser. The services, systems and appliances shown have not been tested and no guarantee as to their operability or efficiency can be given.  
Made with Metropix ©2023





