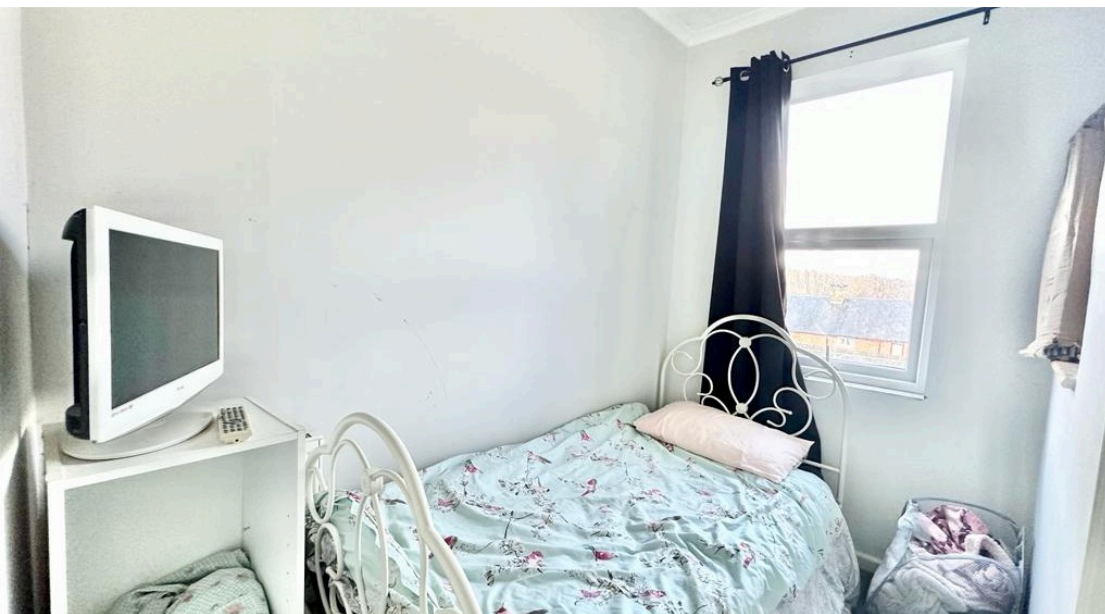




 **2**
Bedrooms

 **1**
Bathroom



A two bedroom terrace situated in the heart of Barnsley, South Yorkshire. An ideal opportunity for a first time purchase or buy to let investment; massively boasting from only a stone throw away to the town centre, a nearby location to amenities and transport links and the motorway being within easy reach. The property itself benefits from double glazing and gas central heating throughout.

Introducing to the market this two bedroom terrace situated in the heart of Barnsley, South Yorkshire. An ideal opportunity for a first time purchase or buy to let investment; massively boasting from only a stone throw away to the town centre, a nearby location to amenities and transport links and the motorway being within easy reach. The property itself benefits from double glazing and gas central heating throughout.

Briefly accommodating a lounge, kitchen, two bedrooms, bathroom and rear yard.

Call G8 today to arrange your viewing.

Lounge: Welcomed into the property via the entrance door into the lounge with fitted carpets, a feature fireplace, a wall mounted radiator and a front facing double glazed window.

Kitchen: The kitchen is fitted with a range of wall and base units with space for appliances such as a cooker and washing machine. Also with an inset sink and drainer with mixer tap over, laminate flooring, a wall mounted radiator and a rear facing double glazed window and door.

Bathroom: The house bathroom features a three piece suite comprising a low flush WC, pedestal wash hand basin and panel bath. Also with a wall mounted radiator, extractor fan and an elevated double glazed window.

Bedroom One: The first bedroom provides fitted carpets, a wall mounted radiator and an elevated double glazed window.

Bedroom Two: The second bedroom offers fitted carpets, a wall mounted radiator and an elevated double glazed window.

Asking Price £90,000
Gordon Street, Barnsley, S70

Score	Energy rating	Current	Potential
92+	A		
81-91	B		90 B
69-80	C	69 C	
55-68	D		
39-54	E		
21-38	F		
1-20	G		

