

Love Homes



Russell Road, Toddington, Bedfordshire, LU5 6DA

Available chain free, this extended three bedroom semi detached bungalow is situated in a popular and sought after residential location. Ideal for those looking to put their own mark on a property, the bungalow offers excellent scope to modernise and enjoys deceptively spacious accommodation located on a good size plot. The versatile accommodation briefly comprises; a 17'0" living room, a kitchen and useful study, three double bedrooms overlooking the rear garden and a bathroom with separate cloakroom. The spacious loft area has power and light as well as windows overlooking the front and rear aspects and offers excellent scope to convert to create extra space (subject to planning consent) if required.



This property is presented by Duncan Stead - a Love Homes property expert with over 25 years experience.

Find out more about this property by scanning the QR code.



2.5m

Tenure: Freehold



3



2



1

Council Tax Band: E

Flitwick Office 01525 71311



Barton Le Clay Office 01582 882440



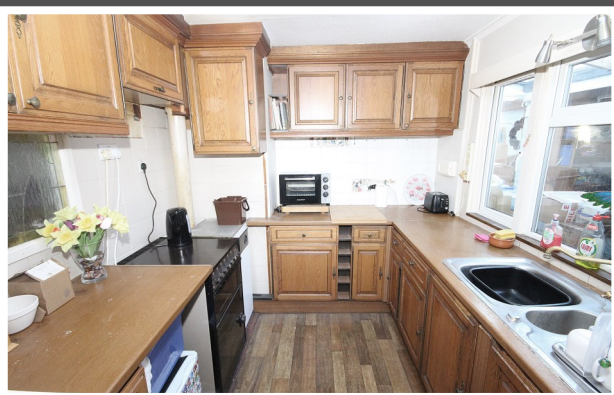
Biggleswade Office 01767 669222

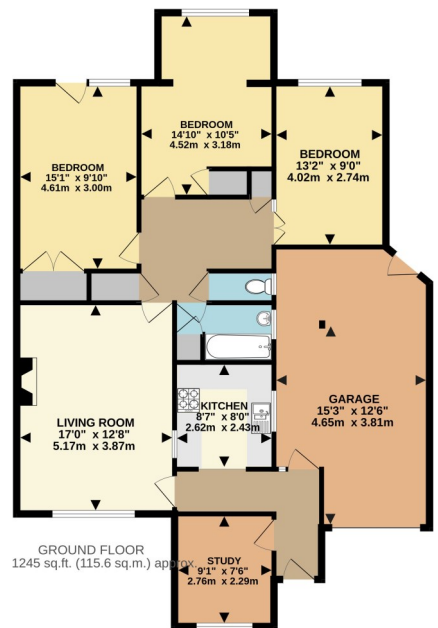


♥

"Having been our family home for almost 60 years and spanning three generations, we have hearts full of the happiest of memories, from playing badminton in the garden in the summer and board games around the fire on a winter's evening, to hosting wedding parties and special family gatherings. Toddington has been the hub of our lives during this time and we've seen it grow from a small village rich in history to a thriving community with sought after schools, sporting, social and retail amenities, countryside walks and a well equipped children's play area. With friendly villagers and some dear neighbours this has been a happy family home for decades. Leaving our home is like taking off a favourite cosy jumper ready for someone else to nurture it and to feel as comfortable within it as we have been."

♥





GROUND FLOOR
 1245 sq.ft. (115.6 sq.m.) approx.
 TOTAL FLOOR AREA - 1245 sq.ft. (115.6 sq.m.) approx.
Drawn by Love Homes for illustrative purposes only. Measurements and areas shown are approximate. Made with Metagen 2023



Score	Energy rating	Current	Potential
92+	A		
81-91	B		81 B
69-80	C		
55-68	D	56 D	
39-54	E		
21-38	F		
1-20	G		



These particulars are set out as a general outline in accordance with the Property Misdescriptions Act (1991) only for the guidance of intending purchasers or lessees, and do not constitute any part of an offer or contract. Details are given without any responsibility, and any intending purchasers, lessees or third parties should not rely on them as statements or representations of fact but must satisfy themselves by inspection or otherwise as to the correctness of each of them. We have not carried out a structural survey and the services, appliances and specific fittings have not been tested. All photographs, measurements, floor plans and distances referred to are given as a guide only and should not be relied upon for the purchase of carpets or any other fixtures or fittings. Gardens, roof terraces, balconies and communal gardens as well as tenure and lease details cannot have their accuracy guaranteed for intending purchasers. Lease details, service ground rent (where applicable) are given as a guide only and should be checked and confirmed by your solicitor prior to exchange of contracts. No person in the employment of Love Homes has any authority to make any representation or warranty whatever in relation to this property. Purchase prices, rents or other prices quoted are correct at the date of publication and, unless otherwise stated, are exclusive of VAT. We retain the copyright in all advertising material used to market this Property.