



AN EXTENDED FOUR BEDROOM, THREE BATHROOM FAMILY HOME

George V Avenue, Pinner, HA5 5SU



AN EXTENDED FOUR BEDROOM, THREE BATHROOM FAMILY HOME

George V Avenue, Pinner, HA5 5SU

**ENTRANCE HALLWAY • DOUBLE LENGTH LIVING/
DINING ROOM • STUDY • LARGE KITCHEN/
BREAKFAST ROOM • GUEST CLOAKROOM •
FOUR DOUBLE BEDROOMS • TWO EN-SUITES •
LUXURY FAMILY BATHROOM • PRIVATE GARDEN
• OFF-STREET PARKING • GARAGE TO REAR**

Description

A generously proportioned, four bedroom, three bathroom, extended family home offering living accommodation in excess of 1,800 sq.ft, situated in a popular location within equal distance of Pinner, Hatch End and North Harrow's amenities.

The ground floor comprises an entrance hallway with a guest cloakroom and study. There is a double length living/dining room which continues through to a large, rear aspect kitchen/breakfast room featuring modern fitted kitchen units, plenty of room for a dining table & chairs, a separate utility room, and two sets of patio doors opening out to the garden. To the first floor there are three good-size double bedrooms with two benefiting from en-suite shower rooms, and a luxury family bathroom





The second floor hosts the largest of the bedrooms which has access to eaves storage space.

Externally this family home has a private rear garden that is part lawn and part patio, with the garage to the back. The front of the property has a driveway that provides off-street parking for multiple cars.

Location

Perfectly positioned for Hatch End, North Harrow and Pinner high streets, all offering a vast selection of shopping facilities, restaurants, coffee houses and supermarkets. There are excellent transport facilities nearby including the Overground services at Hatch End and Headstone Lane station, the Metropolitan line at North Harrow and Pinner station, and a number of local bus routes.

The area is well served by local primary and secondary schooling with Nower Hill secondary school within walking distance, and numerous parks/playgrounds and open spaces.

Additional Information

Guide Price: Price on Application

Tenure: Freehold

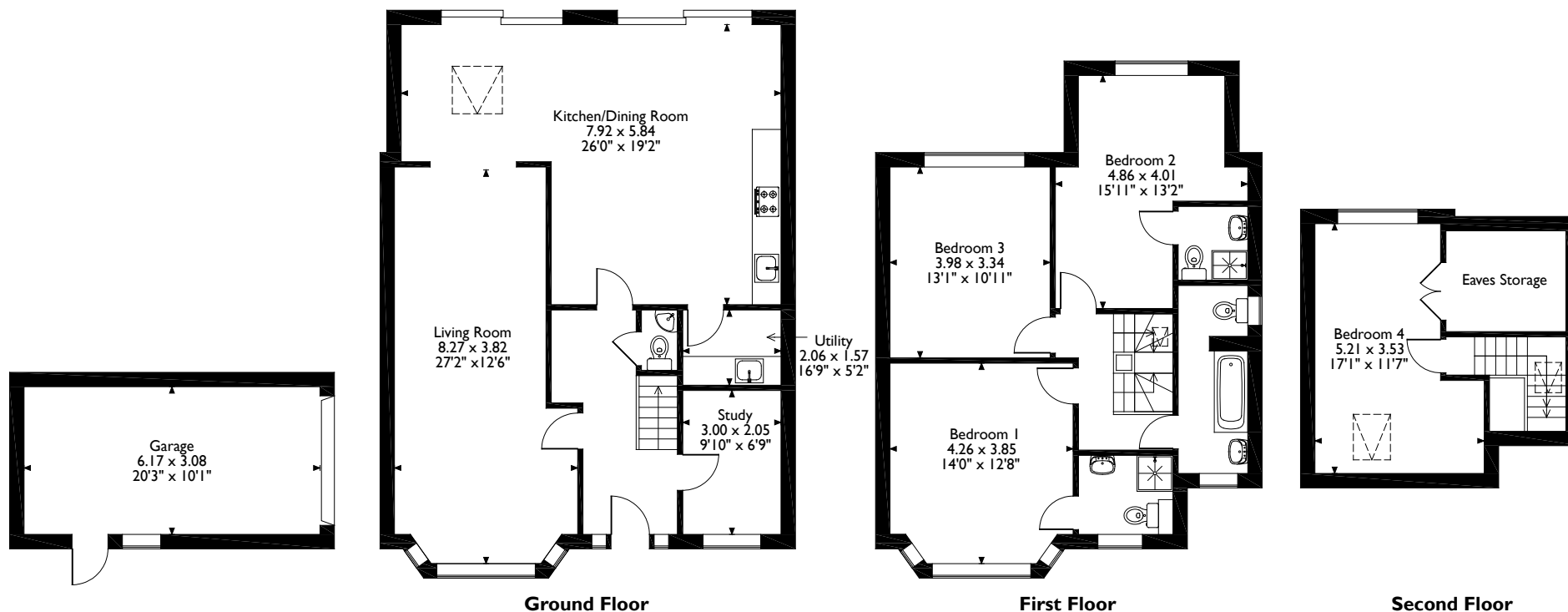
Local Authority: London Borough of Harrow

Council Tax: Band E

Energy Efficiency Rating: Band C



George V Avenue, Pinner
 Approximate Gross Internal Area
 Main House = 175 Sq M/1883 Sq Ft
 Garage = 19 Sq M/205 Sq Ft
 Total = 194 Sq M/2088 Sq Ft



Please note that the location of doors, windows and other items are approximate and this floorplan is to be used for illustrative purposes only. Unauthorized reproduction is prohibited.



1 High Street, Pinner, Middlesex, HA5 5PJ
 Tel: 0208 866 8083 Pinner@robsonswb.com
www.robsonswb.com



Important notice: Robsons, their clients and any joint agents give notice that 1: They are not authorised to make or give any representations or warranties in relation to the property either here or elsewhere, either on their own behalf or on behalf of their client or otherwise. They assume no responsibility for any statement that may be made in these particulars. These particulars do not form part of any offer or contract and must not be relied upon as statements or representations of fact. 2: Any areas, measurements or distances are approximate. Plot sizes and dimensions are taken from Promap and are approximate. The text, photographs and plans are for guidance only and are not necessarily comprehensive. It should not be assumed that the property has all necessary planning, building regulation or other consents and Robsons have not tested any services, equipment or facilities. Purchasers must satisfy themselves by inspection or otherwise.