



Roseway, South Shore

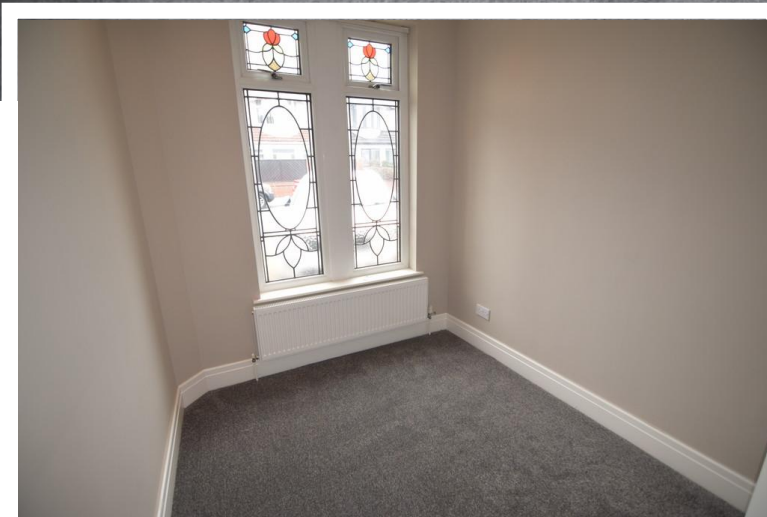
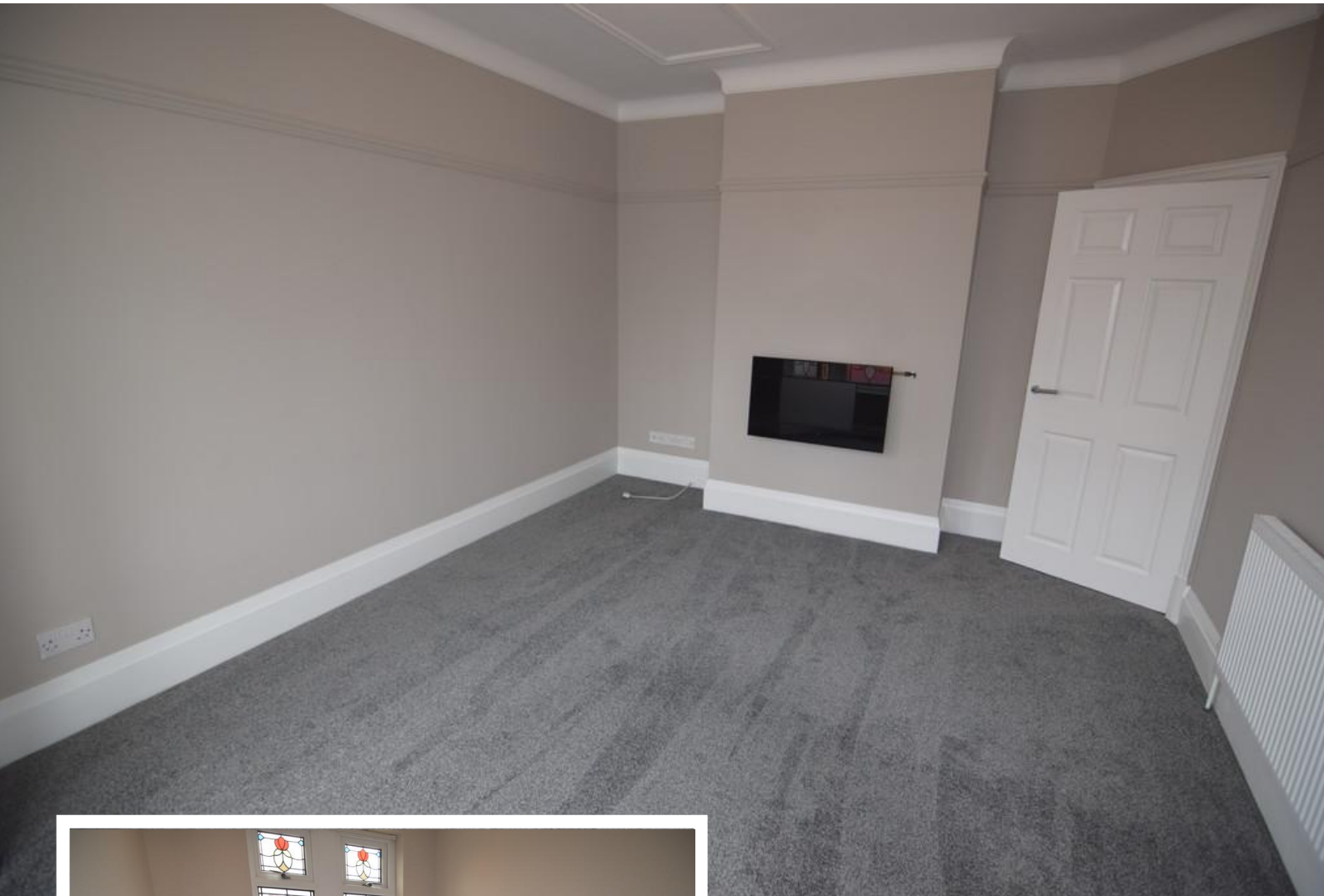
Blackpool, FY4 2PW

- **SEMI DETACHED BUNGALOW IN SOUTH SHORE**
- **MODERN 4 PIECE FAMILY BATHROOM**
- **MODERN KITCHEN WITH FAMILY ROOM OFF**
- **GAS CENTRAL HEATING - DOUBLE GLAZED**

£895 pcm

EPC Rating 'TBC'





Property Description

LOUNGE

14' 11" x 11' 06" (4.55m x 3.51m)

RADIATOR, DOUBLE GLAZED WINDOWS

FRONT BEDROOM

7' 05" x 10' 02" (2.26m x 3.1m)

RADIATOR, DOUBLE GLAZED WINDOW

BATHROOM

9' 09" x 5' 10" (2.97m x 1.78m)

FOUR PIECE SUITE WITH CORNER SHOWER CUBICLE, BATH, WC AND WASH HAND BASIN

HALLWAY

KITCHEN / FAMILY ROOM

11' 06" x 24' 40" (3.51m x 8.33m)

MODERN



RANGE OF WALL AND BASE UNITS, DOUBLE SPLIT OVEN, HOB, INTEGRAL DISHWASHER, FRIDGE FREEZER. LARGE FAMILY ROOM OFF WITH DOUBLE GLAZED DOORS

REAR BEDROOM

15' 00" x 10' 04" (4.57m x 3.15m)

RADIATOR, DOUBLE GLAZED WINDOW





21 Counce Street
Blackpool
Lancashire
FY1 3LA

www.moveholmes.co.uk
01253 928200
enquiries@moveholmes.co.uk

Agents Note: Whilst every care has been taken to prepare these sales particulars, they are for guidance purposes only. All measurements are approximate and are for general guidance purposes only and whilst every care has been taken to ensure their accuracy, they should not be relied upon and potential buyers are advised to recheck the measurements