



**The  
Architects House**  
—— Middleton ——



Tucked away in the peaceful village of Middleton, next to the Jurassic Way, discover The Architects House at the bottom of a quiet, country, no-through-lane...

Architecturally designed in the 1950s, this utterly unique, Swiss-style chalet home is set within a spacious plot and offers breathtaking views over the tree tops and the ever-changing landscape of the Welland Valley.



## Secluded setting

Pull through the timber gated entrance. Follow the sweeping pathway between the lawns, where mature trees and plants provide ample privacy before arriving at the Siberian larch clad, glass fronted, black and white minimalist home.

Beneath the canopied entrance step inside onto the polished concrete floor.







## Light-filled living

Ahead, follow the light into the kitchen-family room, where sliding doors provide an all year round picture frame view of the gardens and valley beyond. Enjoy morning coffee or dine al fresco on the elevated terrace. Inside, a large, contemporary log-burning stove issues warmth and welcome. A marble monochrome central island provides an opportune spot for pulling up a stool. Sleek cabinetry offers ample storage whilst integrated appliances offer all a chef desires.

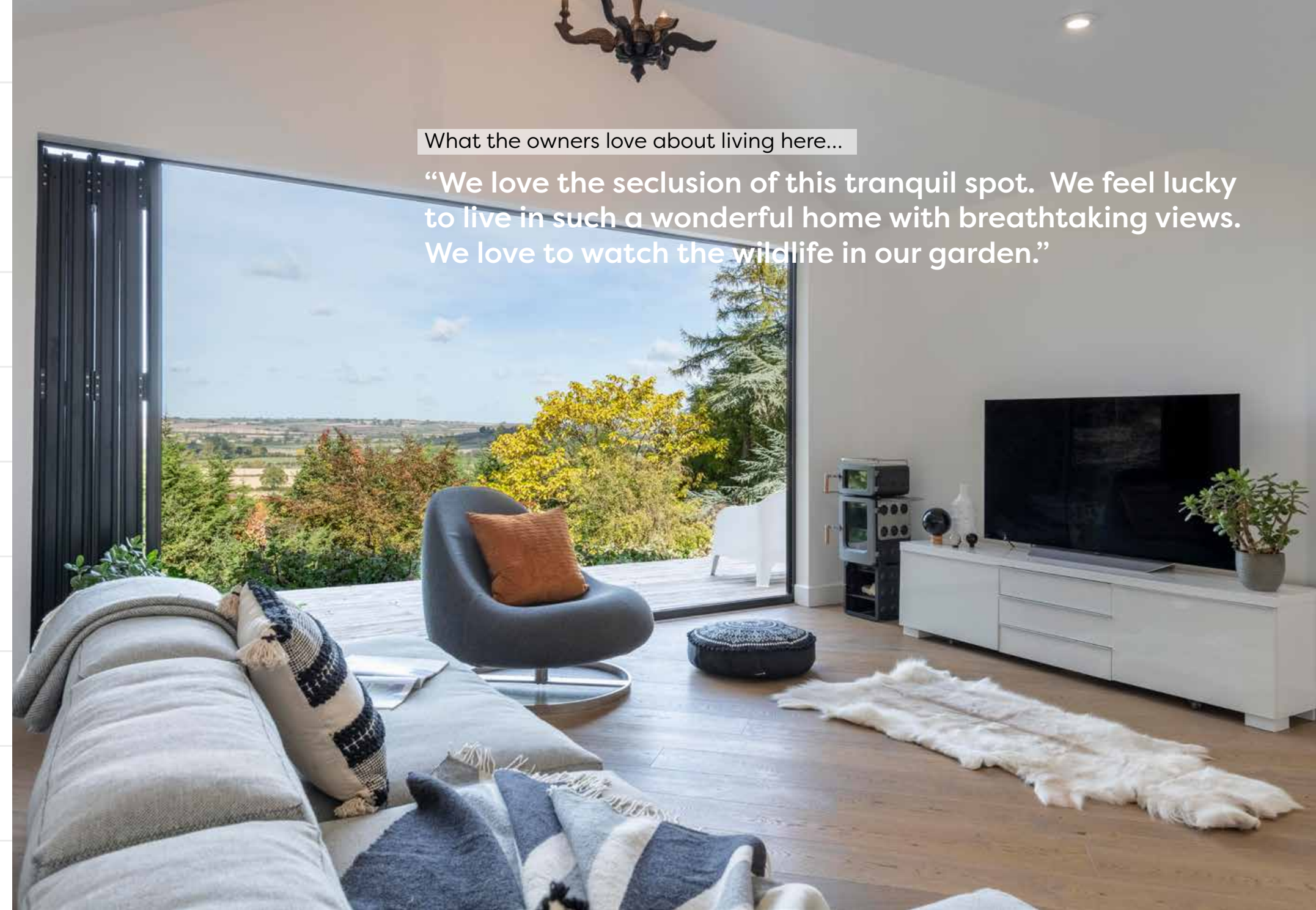




## Contemporary chic

Entertain guests in the adjacent dining room, where valley views are once again the focal point.

Beyond, engineered oak flooring extends throughout the sitting room, another light and bright room with fitted cupboards to one side and stylish contemporary radiators. Bifold doors open to the elevated decking beyond.



What the owners love about living here...

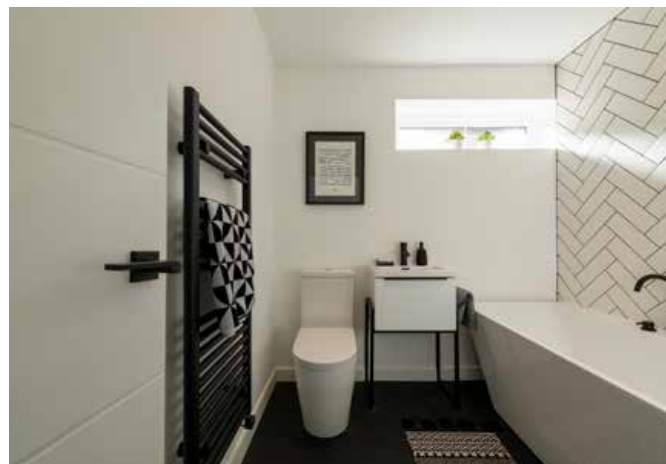
“We love the seclusion of this tranquil spot. We feel lucky to live in such a wonderful home with breathtaking views. We love to watch the wildlife in our garden.”



## Soak & sleep

Retracing your steps through the entrance hallway to the bedroom wing, discover the first three bedrooms, all stylishly decorated with a contemporary, monochrome motif throughout. Soak up views of the valley from two of the bedrooms, while the third overlooks the front garden.

Refreshment awaits in the family bathroom, conveniently located to serve three bedrooms and where guests can freshen up.







## Sumptuous & sublime

Sanctuary awaits in the principal suite. Tucked away, this supremely spacious room offers privacy and tranquility. Bifold doors open to the garden and fitted wardrobes provide ample storage.

The stylish monochrome theme of the home continues in the principal en suite where there is a large walk-in shower.



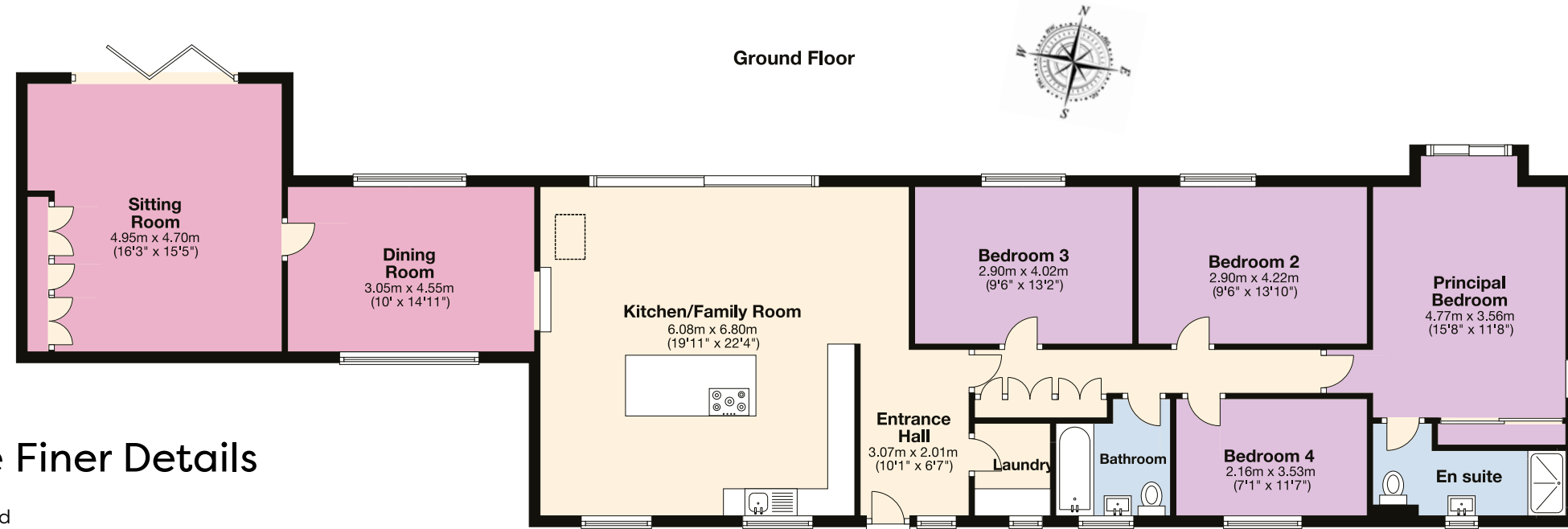


## Elevated views

A private wonderland awaits beneath the elevated terraces. A spectrum of colour awaits where the sloping, mature, landscaped garden provides shelter, a haven for wildlife and the ideal spot for the Finnish Kota hut and outside bar. What an incredible garden for entertaining family and friends, and for those younger generations to explore.

Spot a deer or two in the woodlands or simply take in the fragrances of the abundance of trees, flowers and grasses.

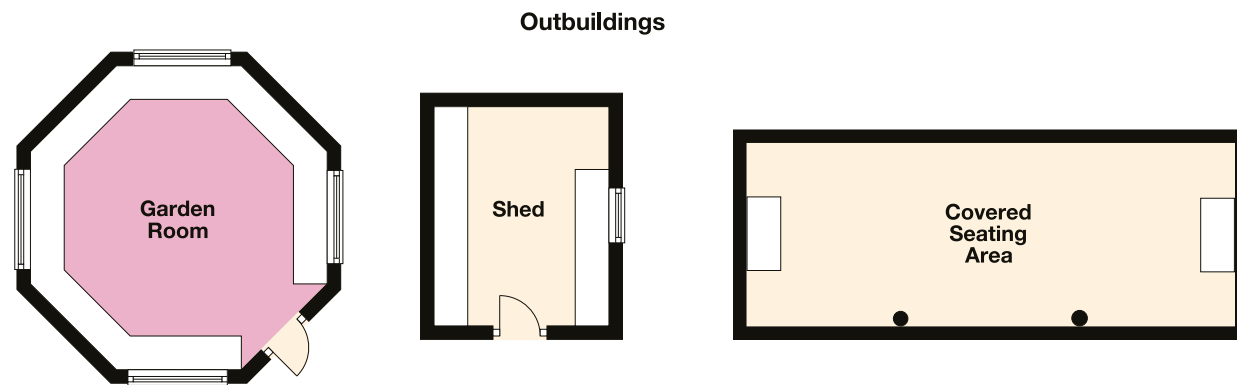




## The Finer Details

Freehold  
 Constructed 1958, since renovated  
 Conservation area  
 Plot approx. 0.62 acre  
 Corby Borough Council, tax band D  
 Gas central heating  
 Mains electricity, water and sewage  
 EPC rating D

Ground Floor:  
 approx. 153.7 sq. metres  
 (1654 sq. feet)  
 Outbuildings:  
 approx. 44.6 sq. metres  
 (480 sq. feet)  
 Total area:  
 approx. 198.3 sq. metres  
 (2134 sq. feet)



NOT IN ACTUAL POSITION



Pelham James use all reasonable endeavours to supply accurate property information in line with the Consumer Protection from Unfair Trading Regulations 2008. These property details do not constitute any part of the offer or contract and all measurements are approximate. The matters in these particulars should be independently verified by prospective buyers. It should not be assumed that this property has all the necessary planning, building regulation or other consents. Any services, appliances and heating system(s) listed have not been checked or tested. Purchasers should make their own enquiries to the relevant authorities regarding the connection of any service. No person in the employment of Pelham James has any authority to make or give any representations or warranty whatever in relation to this property or these particulars or enter into any contract relating to this property on behalf of the vendor. Floor plan not to scale and for illustrative purposes only.



## Near and far

Explore the delightful walks that await on your doorstep.

In the heart of the Welland Valley, there is much to see and do close by. The peaceful village of Middleton is home to the Van Oppen Polo Club, with its spectacular views and Safari Bar. Facilities include manège and stabling. There is also a local equestrian centre nearby.

In the neighbouring village of Cottingham pick up your essentials from the village store, which also has a café, and get to know the locals in village pub The Royal George.

Sample artisan food and local produce at Ashley Farm Shop, just one mile away. Families are also well placed for schooling, with a primary school in Cottingham and Kingswood Secondary Academy also nearby.

For leisure, Blackthorn Wood Golf Course is close by, with Corby International Pool only a short drive away.

Commuting is clear cut, with rail links from nearby Kettering, Market Harborough and Corby into London whilst the market towns of Uppingham and Oundle are close by.

## Local Distances

- Corby 4 miles (10 minutes)
- Kettering 8 miles (17 minutes)
- Uppingham 9 miles (19 minutes)
- Market Harborough 8 miles (15 minutes)
- Oakham 15 miles (27 minutes)
- Oundle 15 miles (27 minutes)





The Architects House, 11 Camsdale Walk, Middleton LE16 8YR



To view please call the team on  
01572 497 070 | [team@pelhamjames.co.uk](mailto:team@pelhamjames.co.uk) | [pelhamjames.co.uk](http://pelhamjames.co.uk)

