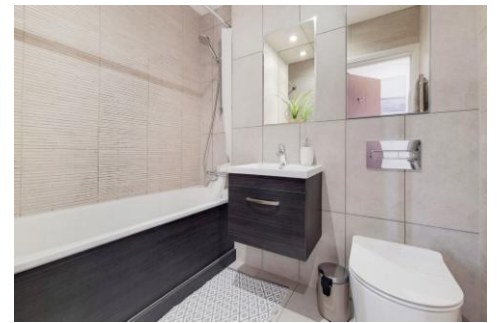




# MILE



## Park House, London NW10 £375,000 Leasehold

Prices from £375,000: Multiple units available

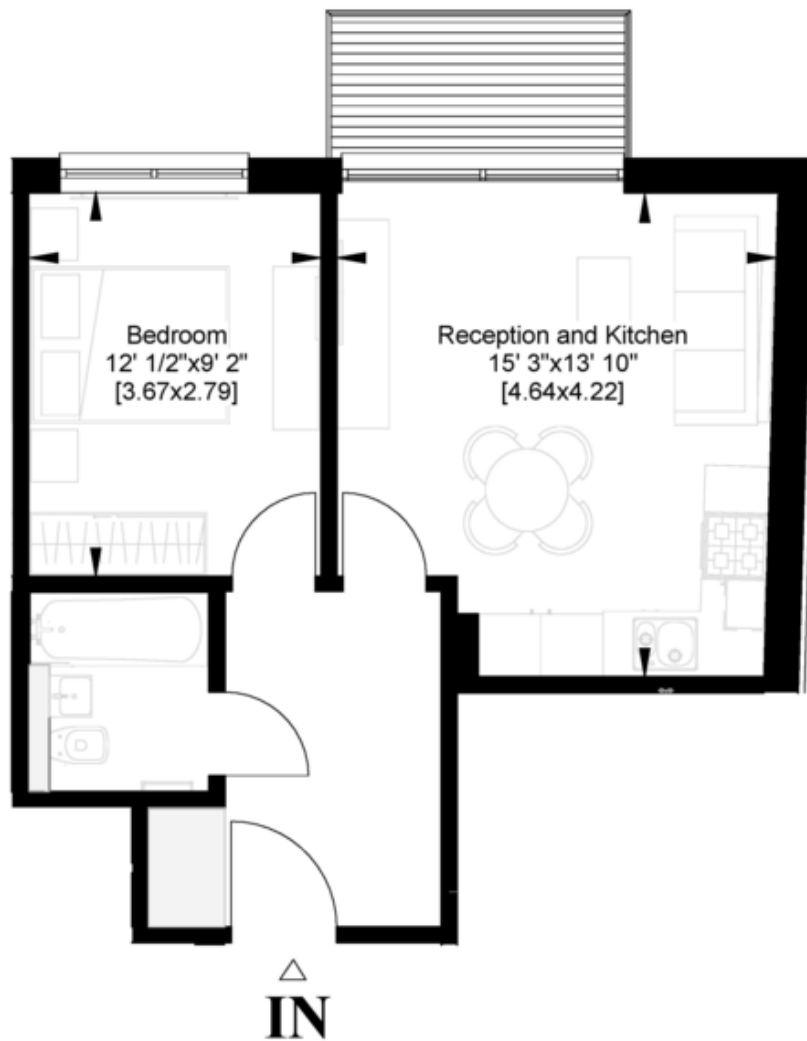
Mile are delighted to bring to market this stunning high spec one bedroom apartment set within this modern block. Meticulously nurtured and designed, this incredible second floor apartment offers high specification across almost 500 sq ft of living space. Generously proportioned; light and airy this apartment boasts an elegant open plan kitchen living area, a well proportioned double bedrooms and a stunning balcony with views of London. Sold chain free with a long lease of 999 years; it is highly recommended for viewing. Any potential suitors will not be disappointed. Manor Park Road is a quiet road ideally positioned close to all the local amenities of Harlesden and Willesden Junction and less than 15 minutes walk from the future Old Oak Common HS2 / Crossrail interchange. Maple Walk and Leopold schools with Roundwood Park and Wormwood Scrubs only a short distance away. The nearest stations are Harlesden and Willesden Junction (Bakerloo line / Overground - zone 2).

- High Spec Apartment
- One double bedroom
- One bathrooms
- 999 year lease
- Chain Free
- Excellent condition
- Secure block
- Several units available
- Private balcony
- Close to shops and transports

# FLAT 10 PARK HOUSE



GROSS INTERNAL AREA	= 42.03 sqm	452.43 sq ft
EXTERNAL AREA	= 4.13 sqm	44.40 sq ft
<b>TOTAL AREA</b>	<b>= 46.16 sqm</b>	<b>496.84 sq ft</b>



**MONEY LAUNDERING REGULATIONS 2003:** Intending purchasers will be asked to produce identification documentation at a later stage and we would ask for your co-operation in order that there will be no delay in agreeing the sale.

**General:** While we endeavour to make our sales particulars fair, accurate and reliable, they are only a general guide to the property and, accordingly, if there is any point which is of particular importance to you, please contact the office and we will be pleased to check the position for you, especially if you are contemplating travelling some distance to view the property.

**Measurements:** These approximate room sizes are only intended as general guidance. You must verify the dimensions carefully before ordering carpets or any built-in furniture.

**Services:** Please note we have not tested the services or any of the equipment or appliances in this property, accordingly we strongly advise prospective buyers to commission their own survey or service reports before finalising their offer to purchase.