



# Meadows House, Chelsea Creek

London, SW6

Guide Price £1,150,000



## Meadows House, Chelsea Creek, London SW6

Looking for the perfect place to call home in one of London's most sought-after locations? Look no further than this stunning 2 bedroom, 2 bathroom apartment located in the prestigious Chelsea Creek development.

This spacious and modern apartment is beautifully designed with comfort cooling and underfloor heating throughout, ensuring that you are always comfortable no matter what the weather. With an allocated parking space included, you'll never have to worry about finding a spot for your car again.

But that's not all - as a resident of Chelsea Creek, you'll have access to a range of amazing facilities including a state-of-the-art gym, a beautiful swimming pool, sauna, steam room and treatment room.

And with a 24-hour concierge service on hand to help with any queries or issues, you'll have peace of mind knowing that you're well taken care of.

Council Tax band: G

Tenure: Leasehold 986 years

- 24 Hour concierge
- Allocated underground parking
- Comfort cooling
- Underfloor heating
- Residents facilities







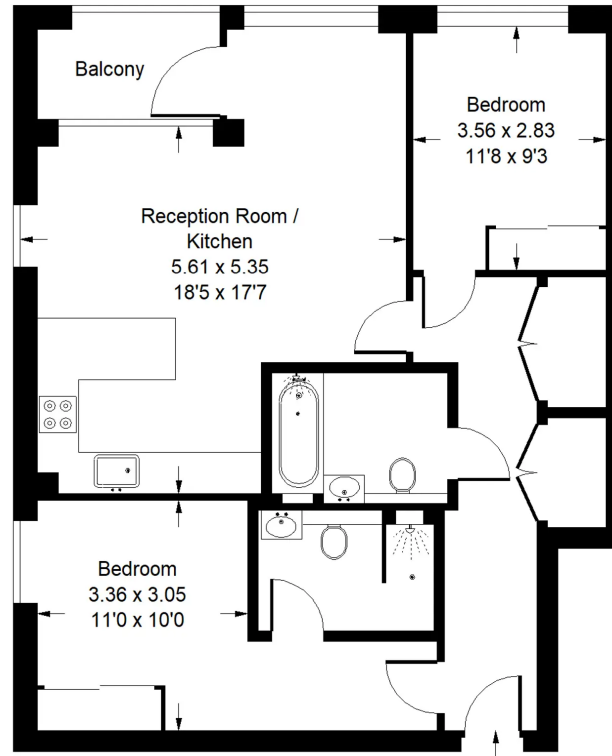






# Meadows House, SW6

Approx. Gross Internal Area  
77.7 sq m / 836 sq ft



Third Floor

Whilst every attempt has been made to ensure the accuracy of the floor plan, measurements are approximate and not to scale. No guarantee is given on the total square footage of the property quoted on the plan. Figures given are for guidance. Plan is for illustration purposes only, not to be used for valuations.

## UK Homes Enterprise

Uk Homes Enterprise, 276-278 Old Brompton Road - SW5 9HR

020 7602 2060 • [info@ukhomesent.com](mailto:info@ukhomesent.com) • [www.ukhomesent.com/](http://www.ukhomesent.com/)

