



35 Belmont Road, Harrow, HA3 7PJ

Offers In Excess Of £450,000

A Chain Free Two Bedroom Family Home, in this desirable Harrow location.

Accommodation comprises Two Bedrooms, Two Separate Reception Rooms, Separate Kitchen, and Family Bathroom.

This Property also has a Large Private Garden.

Call vendor's sole agents Benjamin Stevens now to arrange a viewing!

Reception Room 12'9" x 8'6" (3.9 x 2.6)



Bathroom 8'1" x 7'9" (2.48 x 2.38)



Dining Room 11'9" x 9'7" (3.59 x 2.94)



Second Bedroom 11'9" x 7'0" (3.6 x 2.14)

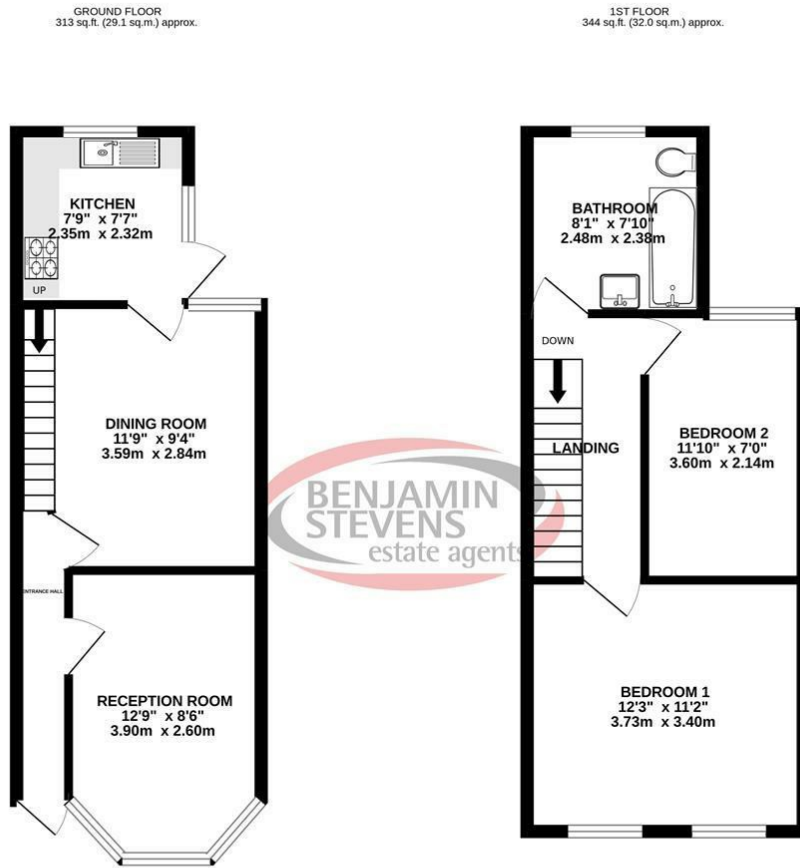


Kitchen 7'8" x 7'7" (2.35 x 2.32)



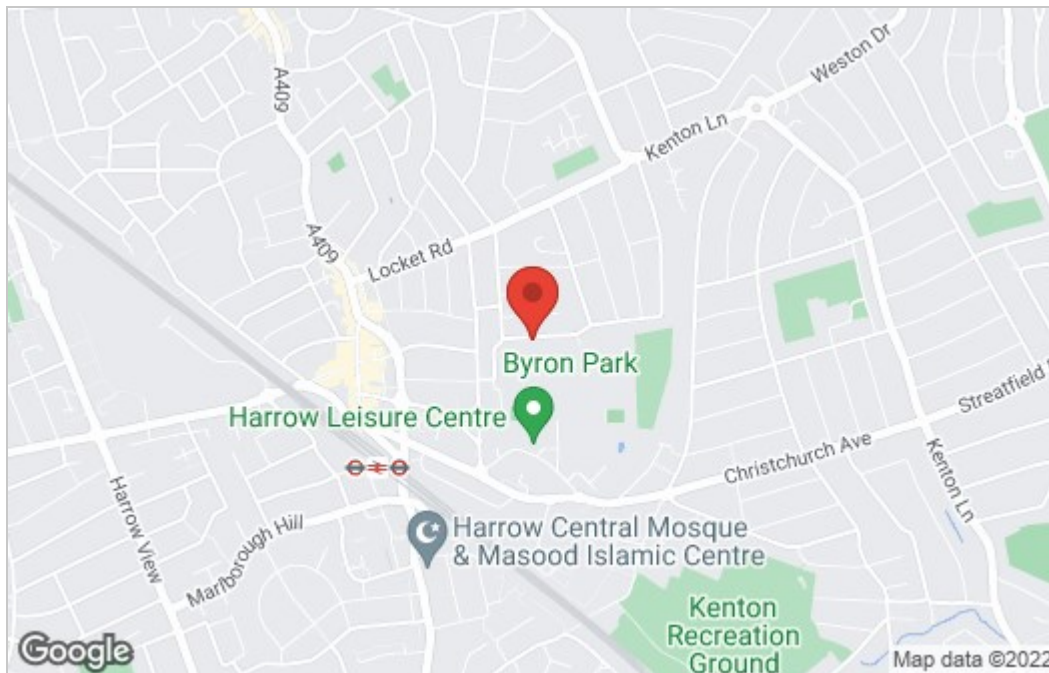
First Bedroom 12'2" x 11'1" (3.73 x 3.4)

Floor Plan

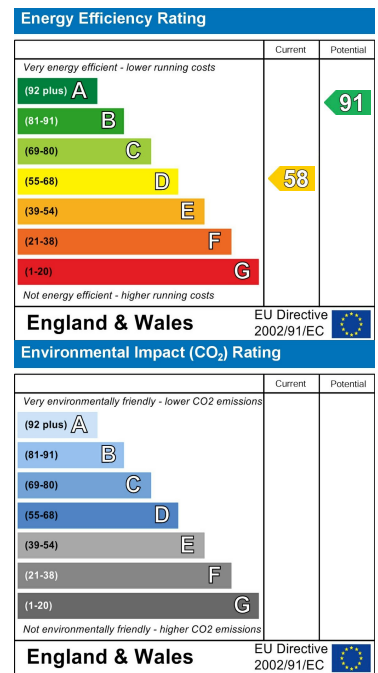


TOTAL FLOOR AREA: 658 sq.ft. (61.1 sq.m.) approx.
While every attempt has been made to ensure the accuracy of the floorplans contained herein, measurements of doors, windows, rooms and any other items are approximate and no responsibility is taken for any error, omission or mis-statement. This plan is for illustrative purposes only and should be used as such by any prospective purchaser. The services, systems and appliances shown have not been tested and no guarantee as to their operability or efficiency can be given.
Made with Metropix ©2022

Area Map



Energy Efficiency Graph



These particulars, whilst believed to be accurate are set out as a general outline only for guidance and do not constitute any part of an offer or contract. Intending purchasers should not rely on them as statements of representation of fact, but must satisfy themselves by inspection or otherwise as to their accuracy. No person in this firm's employment has the authority to make or give any representation or warranty in respect of the property.



Edgware Office- 194 Station Road, Edgware, HA8 7AT. Tel: 020 8958 1118
Bushey Heath Office- 59 High Road, Bushey, WD23 1EE. Tel: 020 8950 7777
www.benjaminstevens.co.uk