



3 Bedroom Semi-Detached House Offers Over £365,000

18 Frilford Drive, Stratton, Swindon, Wiltshire , SN3 4JW

**mcfarlane**  
property.com



## 3 Bedroom Semi-Detached House Swindon East

- IMMACULATELY PRESENTED THROUGHOUT
- SOUGHT AFTER LOCATION
- GENEROUS PLOT
- CONSERVATORY

Offered to the market in the highly sought after location of Stratton St Margaret is this beautifully presented and extended, three bedroom semi-detached family home. comprising; entrance porch, hallway, well-proportioned living room with feature bay window, leading through to the dining via double doors. This then leads to the conservatory which overlooks the well-maintained rear garden. The kitchen boasts ample surface space and is neutrally decorated with a modern feel. There is a large extended utility area which then follows onto the cloakroom & WC.

Upstairs, the property has three good size bedrooms, two of which are doubles & third being a single room. All bedrooms are decorated to a high standard and the home itself is ready to move into with no work required. The landing is complete with good storage and a family bathroom suite. Outside you will find ample driveway parking & single garage, with a large rear garden perfect for the whole family.








**We**   
**where you**  
**LIVE**

Our team are friendly, experienced and are all local. They know it better than they do their own living rooms and can help you find what you're looking for because **we love where we live.**

We would be delighted to show you around this property.

**Because every home  
 needs a personal touch.**

**If you would like to view this  
 property then please get in touch.**

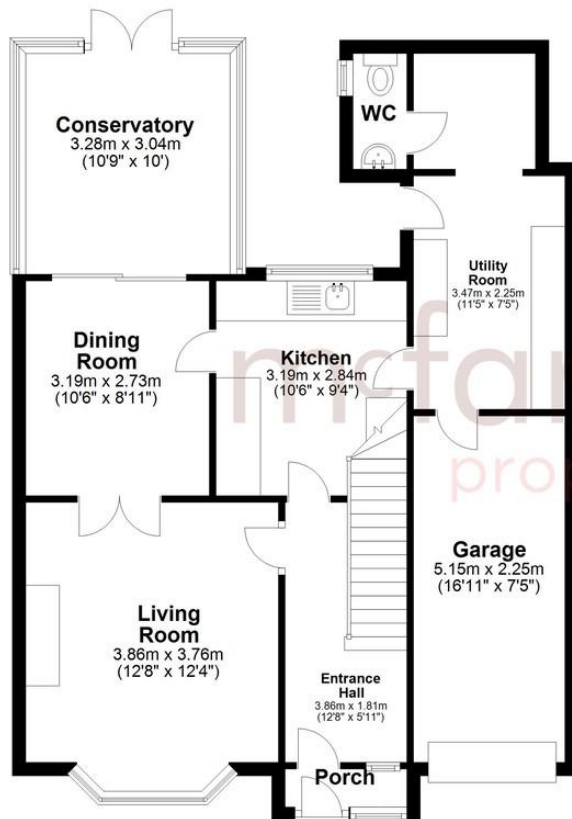
 01793 296600

 [swindon@mcfarlaneproperty.com](mailto:swindon@mcfarlaneproperty.com)

[mcfarlaneproperty.com](http://mcfarlaneproperty.com)

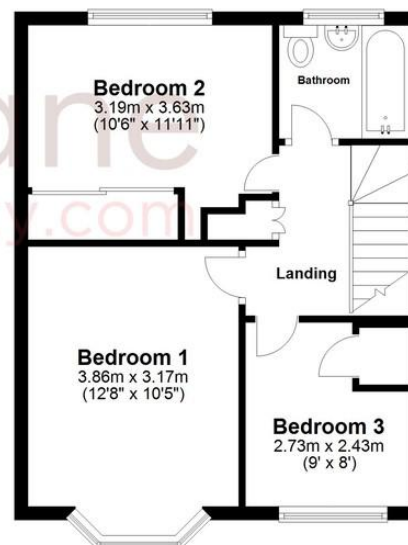
Agents Note: Whilst every care has been taken to prepare these sales particulars, they are for guidance purposes only. All measurements are approximate are for general guidance purposes only and whilst every care has been taken to ensure their accuracy, they should not be relied upon and potential buyers are advised to recheck the measurements

**Ground Floor**  
 Approx. 77.5 sq. metres (834.1 sq. feet)



Total area: approx. 118.4 sq. metres (1274.4 sq. feet)

**First Floor**  
 Approx. 40.9 sq. metres (440.3 sq. feet)



**mcfarlane**  
 property.com

**Cricklade.**  
 102 High Street  
 Cricklade SN6 6AA  
 01793 751044

**Marlborough.**  
 106 High Street  
 Marlborough SN8 1LT  
 01672 514380

**Old Town.**  
 28-30 Wood Street  
 Swindon SN1 4AB  
 01793 296880

**Swindon.**  
 The Village Centre,  
 Redhouse SN25 2FW  
 01793 296600