



101 The Grove, Doncaster, DN2 5SF
Offers In Excess Of £180,000 Freehold



The Grove, Wheatley

3 Bedrooms, 1 Bathroom

Offers In Excess Of £180,000

- Deceptively Spacious Family Home
- Very Popular Location
- Generous Gardens
- Close to Good Local Amenities
- Close to Excellent Commuter Routes
- Close to Doncaster City Centre
- Close to DRI

A rare opportunity to purchase a charming family home in a great location, close to excellent schools, local amenities and transport links. Located on a leafy street with in walking distance to DRI, the property offers comfortable family living space with a degree of flexibility. Briefly comprising of a recently refurbished kitchen, lounge and dining room on the ground floor. There are two generous double bedrooms, a single bedroom and a stylish family bathroom located on the

%epcGraph_c_1_363%



first floor. Outside to the front of the property there is a small garden and driveway for off street parking. To the rear of the property there is a generous enclosed family garden with two patio areas which allows you to make the most of the sun all day. Early viewing is essential to avoid disappointment

KITCHEN 8' 9" x 6' 4" (2.68m x 1.94m) With a range of cream shaker style wall and base units complimented with butchers block worktops. The addition of a stainless steal oven, hob and extractor hood enhance the modern appearance. The kitchen also benefits from an integrated fridge freezer and washing machine

LOUNGE 12' 5" x 11' 7" (3.81m x 3.55m) An open plan lounge diner with a feature fireplace and bay window

DINING ROOM 13' 1" x 10' 6" (4.01m x 3.21m)
Opening from the living room a well proportioned dining room with patio doors opening into the family garden

BEDROOM 13' 1" x 10' 7" (4.01m x 3.24m) A generous double bedroom benefiting from views over the rear garden

BEDROOM 10' 3" x 10' 2" (3.13m x 3.12m) A second double bedroom

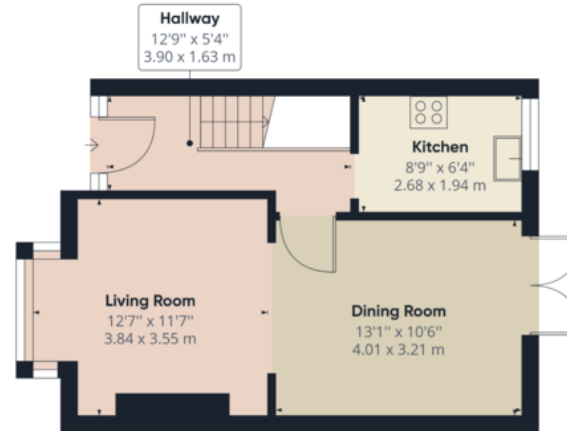
BEDROOM 6' 8" x 6' 10" (2.04m x 2.09m) A single bedroom currently being used as a dressing room

BATHROOM 6' 2" x 6' 2" (1.90m x 1.90m) A recently refurbished contemporary family bathroom with a three piece white bathroom suite and over bath rain shower.

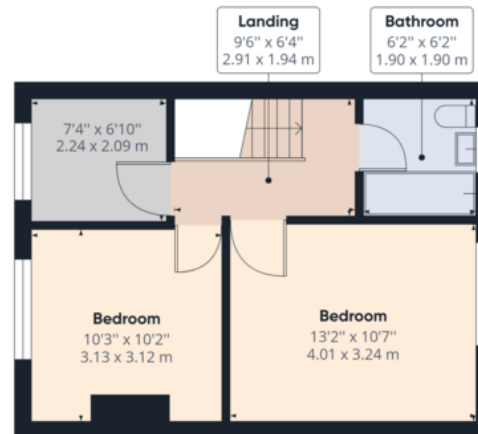








Ground Floor



Approximate total area⁽¹⁾
780.67 ft²
72.53 m²

(1) Excluding balconies and terraces

While every attempt has been made to

Martin & Co Doncaster

38 Hall Gate • Doncaster • DN1 3NR
T: 01302 343 494 • E: doncaster@martinco.com

01302 343 494

<http://www.martinco.com>



Accuracy: References to the Tenure of a Property are based on information supplied by the Seller. The Agent has not had sight of the title documents. A Buyer is advised to obtain verification from their Solicitor. Items shown in photographs including but not limited to carpets, fixtures and fittings are not included unless specifically mentioned within the sales particulars. They may however be available by separate negotiation. Buyers must check the availability of any property and make an appointment to view before embarking on any journey to see a property. No person in the employment of the agent has any authority to make any representation about the property, and accordingly any information given is entirely without responsibility on the part of the agents, sellers(s) or lessors(s). Any property particulars are not an offer or contract, nor form part of one. **Sonic / Laser Tape:** Measurements taken using a sonic / laser tape measure may be subject to a small margin of error. **All Measurements:** All Measurements are Approximate. **Services Not tested:** The Agent has not tested any apparatus, equipment, fixtures and fittings or services and so cannot verify that they are in working order or fit for the purpose. A Buyer is advised to obtain verification from their Solicitor or Surveyor.

