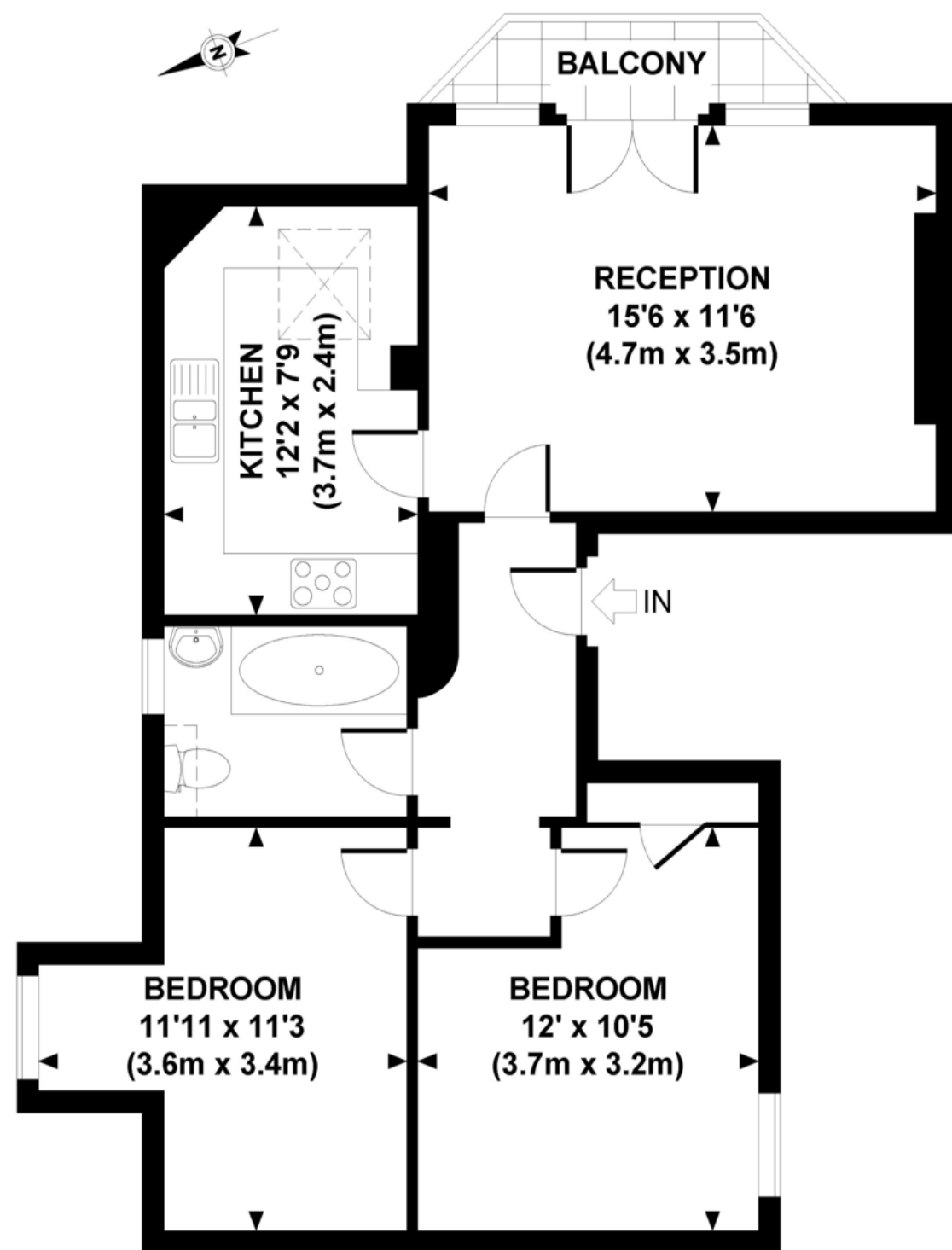


Buxton Mansions, NW2



SECOND FLOOR

APPROXIMATE GROSS INTERNAL AREA 610 SQ FT / 56.7 SQ M

Whilst every attempt has been made to ensure the accuracy of this floor plan, measurements of door, windows, rooms and all other items are approximate. No responsibility is taken for any error, omission or mis-statement. This floor plan is for illustrative purposes only, and should be treated as such.



Chapter Road, London, NW2 5LL

£500,000 Leasehold

Key Features

- Two Bedroom Period Apartment
- Sought After Mansion Block
- Stylish Decor
- Exposed Flooring
- Sunny Private Balcony
- Desirable Location
- Packed With Character
- No Chain

Description

We are favoured with instructions to offer to the open market this stunning top floor period apartment in this hugely sought after mansion block. The property which has been in the same ownership for some 25 years is well maintained throughout and is packed with charm and character. Ideal for a young couple or buy to let investors this stunning property can only be appreciated by internal viewing.



Energy Efficiency Rating		
	Current	Potential
Very energy efficient - lower running costs		
(92+) A		
(81-91) B		
(69-80) C		80
(55-68) D	62	
(39-54) E		
(21-38) F		
(1-20) G		
Not energy efficient - higher running costs		
England & Wales	EU Directive 2002/91/EC	

WWW.EPC4U.COM