

Sanders & Sanders

ESTATE AGENTS

BOMFORD WAY SALFORD PRIORS WORCESTERSHIRE



An opportunity to acquire a 50% shared ownership property with Platform Housing Association. Being situated within a small, select, residential development, within a charming Worcestershire village, with public inns, shop and delightful recreational park. The accommodation comprises. Reception hall, living room, kitchen/diner, downstairs cloakroom, two bedrooms, bathroom, driveway parking and pleasant gardens to front and rear. No upward chain.

£130,000 for a 50% share

Burton House, High Street, Alcester, Warwickshire, B49 5AB.
Tel: 01789 766771 E-mail: alcester@sanders-sanders.co.uk

Web: www.sanders-sanders.co.uk

Bomford Way, Salford Priors, Evesham, Worcestershire, WR11 8AF

Living Room

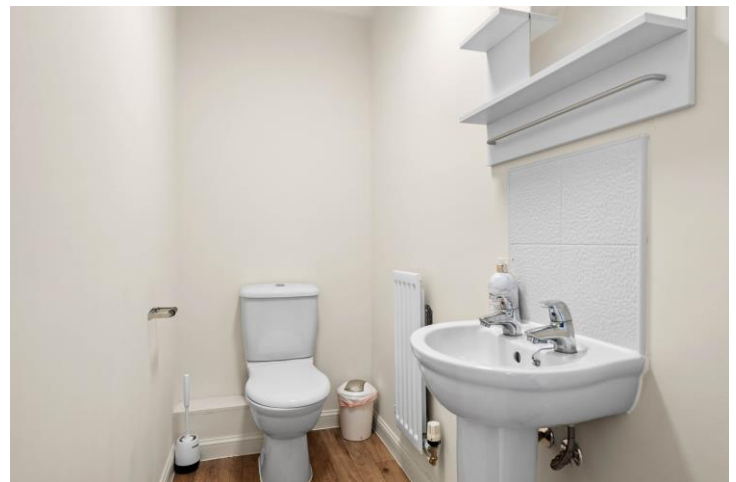
12' 0" (3.66m) x 11' 6" (3.51m) max



Downstairs Cloakroom

Kitchen/Diner

20' 3" (6.17m) x 14' 11" (4.55m)



Bedroom One
15' 0" (4.57m) x 10' 1" (3.07m)



Bedroom Two
14' 11" (4.55m) x 9' 7" (2.92m)



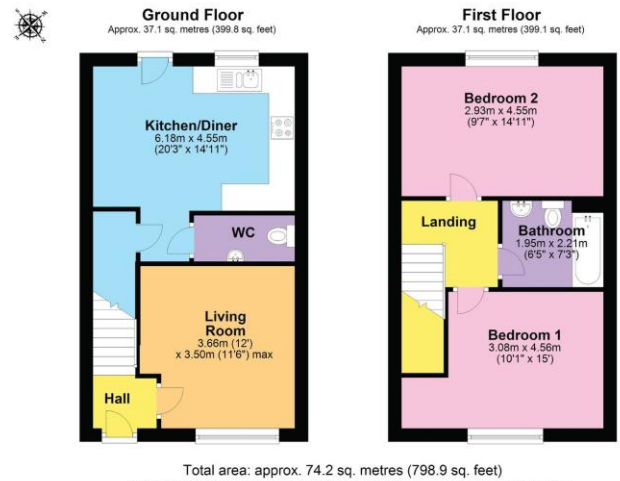
Bathroom



Rear Garden



Floor Plans



Floor Plans

These floor plans are for identification purposes only in relation to where one room is situated to another. They are not to be relied upon in any way for dimensions, scaling or sq. ft/metres. We will not be held responsible for any loss incurred, due to reliance on these measurements.

Monthly Rent for remaining 50% share & Service Charge

The rent is currently £301.50 (this may be subject to change)

The service charge is £34.17 (this may be subject to change)

Platform Housing Association

Any interested party will have to be financially qualified and Help to Buy will need to confirm their suitability for the shared ownership scheme and confirm any local connections that may be required.

Local Connection Criteria

Any interested party must show that they have, or have had a local connection to the parish of Salford Priors in the first instance, or in the second instance a local connection to the parish of Bidford-on-Avon, Wixford, Arrow or Weethley or in the third instance has a local connection to any other parish in the Stratford-upon-Avon district.

The full criteria is available on our website or available from the office.

Fixtures & Fittings

Please note that the fixtures & fittings shown on the photographs, contained within these property details, do not form part of a fixtures & fittings list. Some items may/may not be included. You are advised to clarify what items are included before entering into any negotiations.