



Flat 6, Owen House Whitcombe Gardens, Portsmouth

£55,000





Flat 6

Owen House Whitcombe Gardens,
Portsmouth

This shared ownership property is located in Owen House on St Marys Road. There are a number of local amenities within walking distance and the property is within easy access of the Eastern Road.

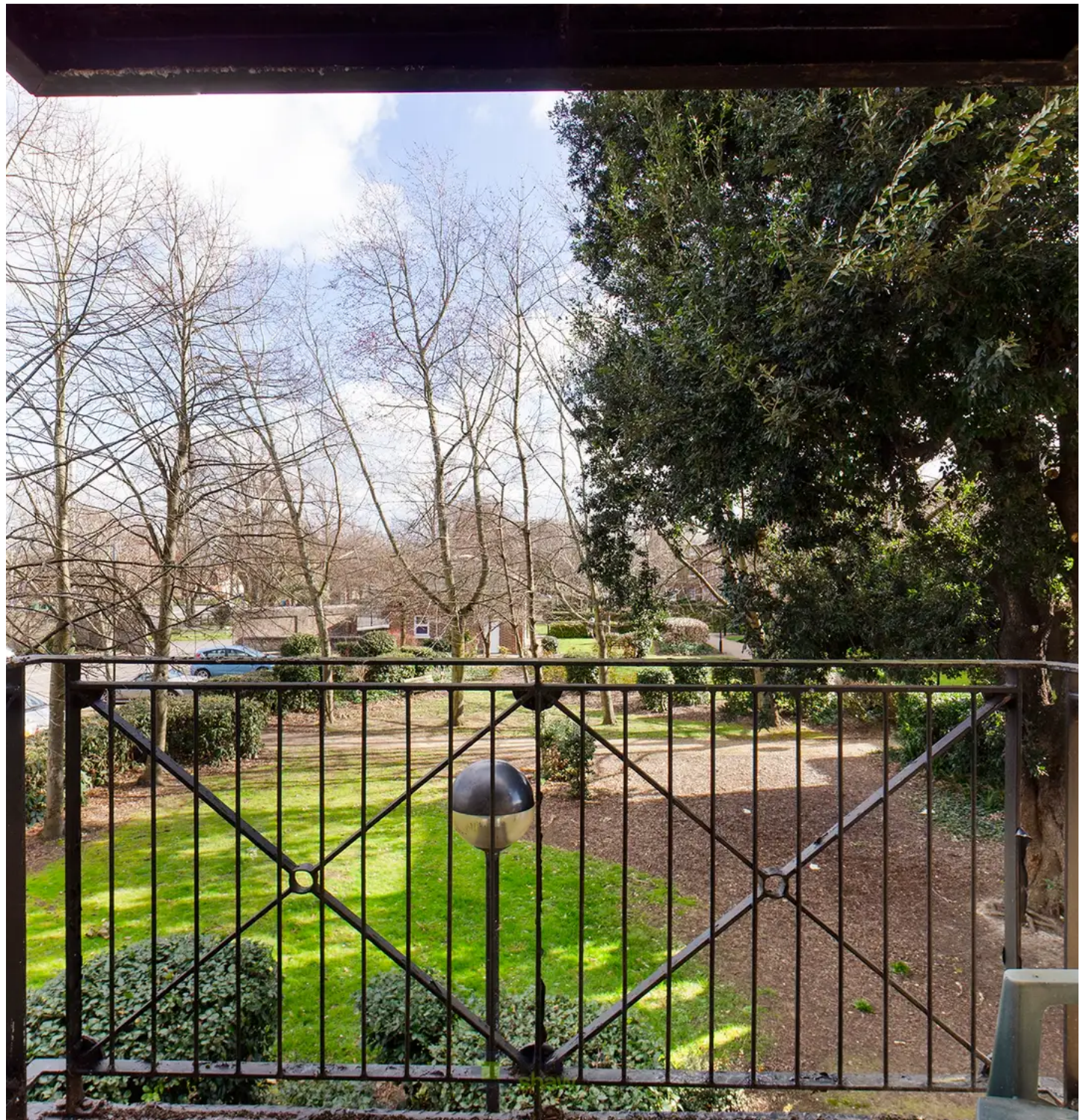
The one-bed flat first floor flat with a balcony overlooking the communal garden has an allocated parking space too. There is a communal entrance hallway with a secure entry system with stairs and a lift to all floors.

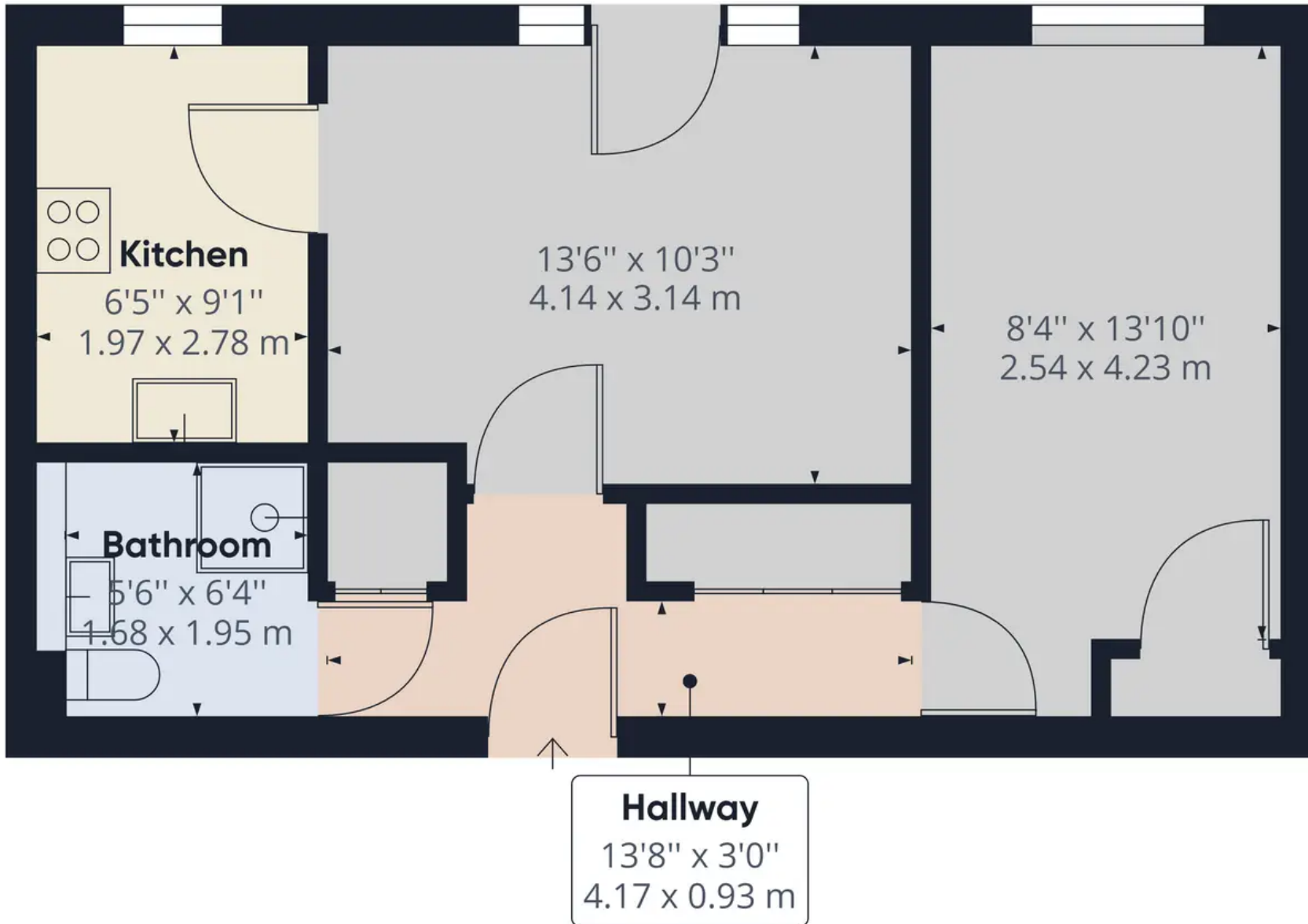
The flat has a generous hallway giving access to the bathroom, the bedroom, kitchen and the living area. It also has a good-sized storage cupboard perfect for coats and shoes. The kitchen has a range units and worktop with space for cooker, fridge and washing machine, a small adjustment would allow for a fridge freezer. The shower room has a fitted suite with basin and WC.

The living room is a good size with access to the balcony. Windows either side of the door allow plenty of light into the room and give views out to the mature trees surrounding the building. The lounge has space for both dining and relaxing and also has the benefit of a wired television aerial. At the other end of the hallway the double bedroom is a great size with ample space for double bed, wardrobe and drawers. This is age exclusive housing and new residents must be aged over 55 years. Service Charge is £ 151.28 per month. Council Tax Band B. Shared ownership proportion = 75%

Council Tax band: B

Tenure: Leasehold





Approximate total area⁽¹⁾

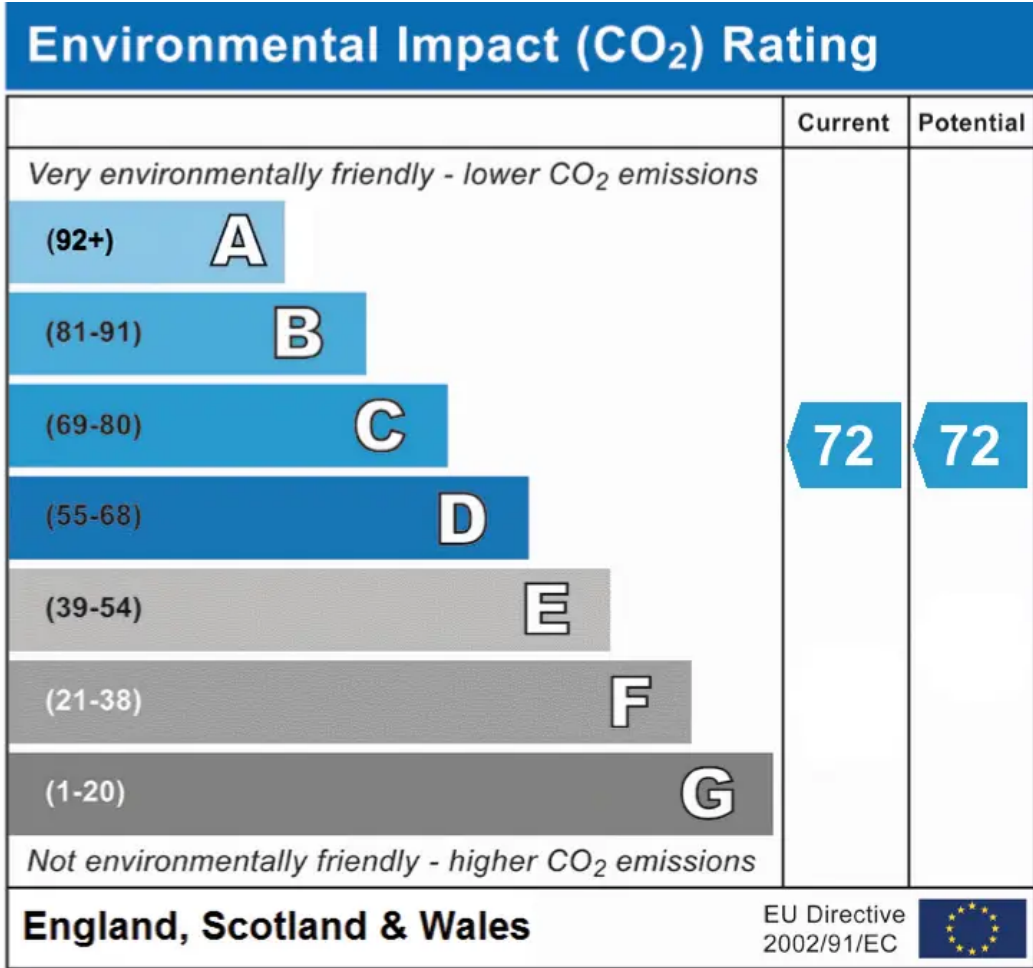
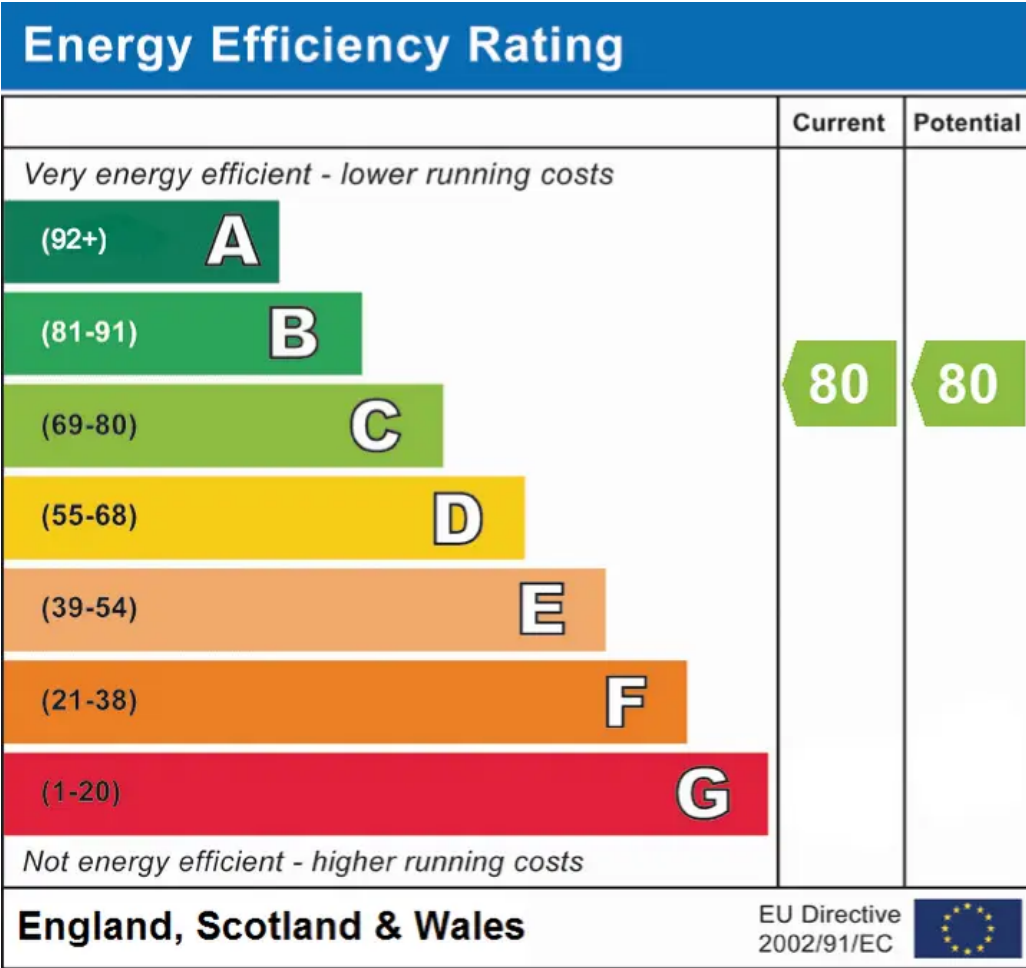
444.80 ft²

41.32 m²

(1) Excluding balconies and terraces

While every attempt has been made to ensure accuracy, all measurements are approximate, not to scale. This floor plan is for illustrative purposes only.

GIRAFFE 360



Chinneck Shaw

Bridge House, Milton Road, Portsmouth – PO3 6AN

023 9282 6731

hello@chinneckshaw.co.uk

www.chinneckshaw.co.uk/

Chinneck Shaw, Bridge House, Milton Road, PO3 6AN Consumer Protection from Unfair Trading Regulations 2008: These details are for guidance only and complete accuracy cannot be guaranteed. If there is any point which is of particular importance, verification should be obtained. The do not constitute a contract or part of a contract. All measurements are approximate. No guarantee can be given with regard to planning permissions or fitness for purpose. No apparatus, equipment, fixture or fitting has been tested. Items shown in the photographs are NOT necessarily included. Interested Parties are advised to check availability and make an appointment to view before travelling to see a property.