



**A STUNNING ARTEGAN HOUSE IN A SOUGHT AFTER LOCATION**

Albury Drive, Pinner, HA5 3RE

**ROBSONS**



# A STUNNING ARTEGAN HOUSE IN A SOUGHT AFTER LOCATION

Albury Drive, Pinner, HA5 3RE

**LIVING ROOM • LOUNGE/KITCHEN/DINING ROOM • GLASS COVERED UTILITY ROOM • GUEST CLOAKROOM • ONE BEDROOM WITH EN SUITE • THREE ADDITIONAL BEDROOMS • FAMILY BATHROOM • DRIVEWAY • ATTRACTIVE REAR GARDEN WITH LARGE 'L' SHAPED PATIO AREA AND A GARDEN KITCHEN**

This impressive property has been extended to create a spacious four bedroom, three bathroom family home and is decorated in contemporary modern tones.

There is a spacious open plan lounge, kitchen and dining area with a generous range of base and wall units and a beautiful breakfast bar in the centre. The bright and spacious lounge has two sky lights and bifolding doors leading into the garden.

Completing the ground floor is a separate living room, guest cloakroom and a glass covered utility room.







To the first floor there are three modern bedrooms two of which has fitted wardrobes and a stunning family bathroom with a stand alone bath, walk in shower with under sink storage.

On the second floor is a fourth bedroom with a modern fully tiled ensuite with walk in shower.

To the rear of the property is an attractive south east facing garden with a large 'L' shaped patio area which is partly covered for shade. There is also a very impressive garden kitchen with a pizza oven and wine cooler, plus an additional decked patio area. To the front of the property is a driveway.

Albury Drive is located on a peaceful, tree-lined road just moments from both Hatch End and Pinner's amenities. Hatch End and Pinner offer a variety of boutique shops, restaurants, coffee houses and popular supermarkets. Transport facilities include local bus links and the Metropolitan Line at Pinner tube station and the Overground at Hatch End rail station, both providing a fast and frequent service into the heart of Central London and beyond. The area is well served for primary and secondary schooling, children's parks/playgrounds and recreational facilities.

Tenure: Freehold

Local Authority: London Borough of Harrow

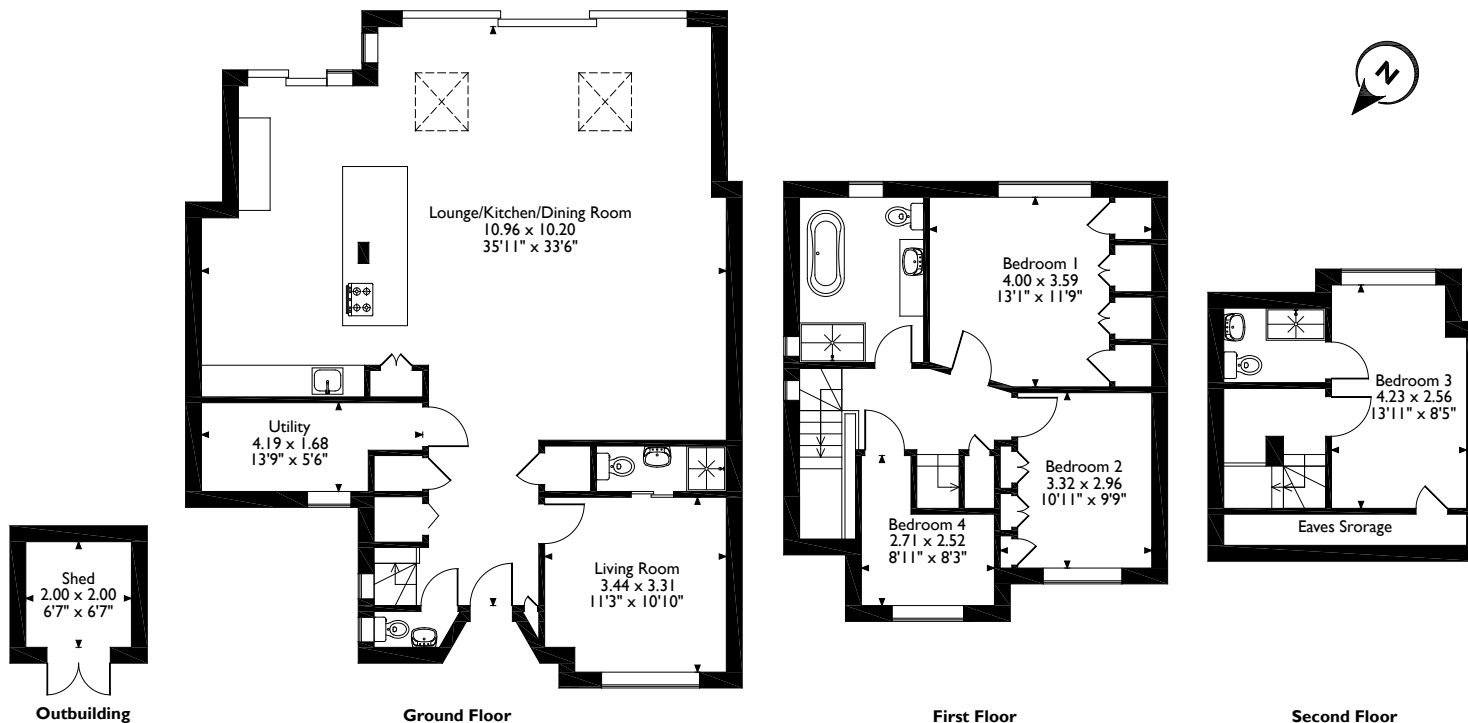
Council Tax: Band: F

Energy Efficiency Rating: Band: C





Albury Drive, Pinner  
 Approximate Gross Internal Area  
 Main House = 167 Sq M/1798 Sq Ft  
 Outbuilding = 4 Sq M/43 Sq Ft  
 Total = 171 Sq M/1841 Sq Ft



Please note that the location of doors, windows and other items are approximate and this floorplan is to be used for illustrative purposes only. Unauthorized reproduction is prohibited.

**ROBSONS**

1 High Street, Pinner, HA5 5PJ  
 Tel: 0208 866 8083 pinner@robsonswb.com  
[www.robsonswb.com](http://www.robsonswb.com)

[www.the-londonoffice.co.uk](http://www.the-londonoffice.co.uk)  
 40 ST JAMES'S PLACE SW1